

**NOTE: UNDERFRAME
VIEW FROM BOTTOM -
LOOKING UP.**

3/4" x 5-40

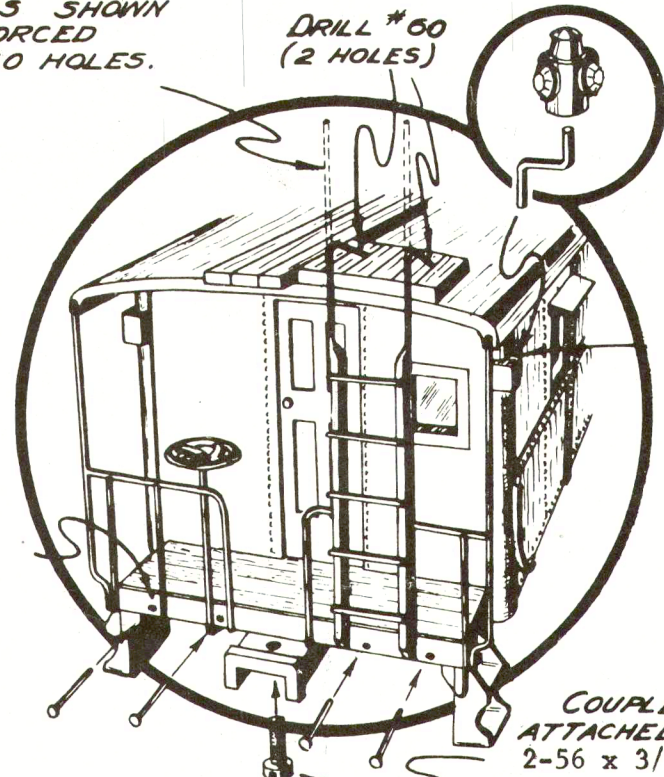
SCREW

MARKER LIGHT

AS SHOWN, FIT INTO
#67 HOLE, AND GLUE

LADDER RAILS
BENT AS SHOWN
AND FORCED
INTO #60 HOLES.

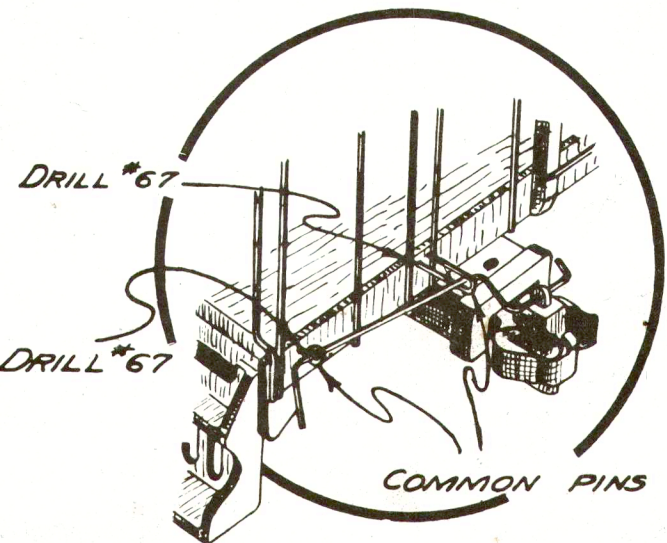
DRILL #60
(2 HOLES)



COUPLER
ATTACHED WITH
2-56 x 3/16"
screw.

NOTE:

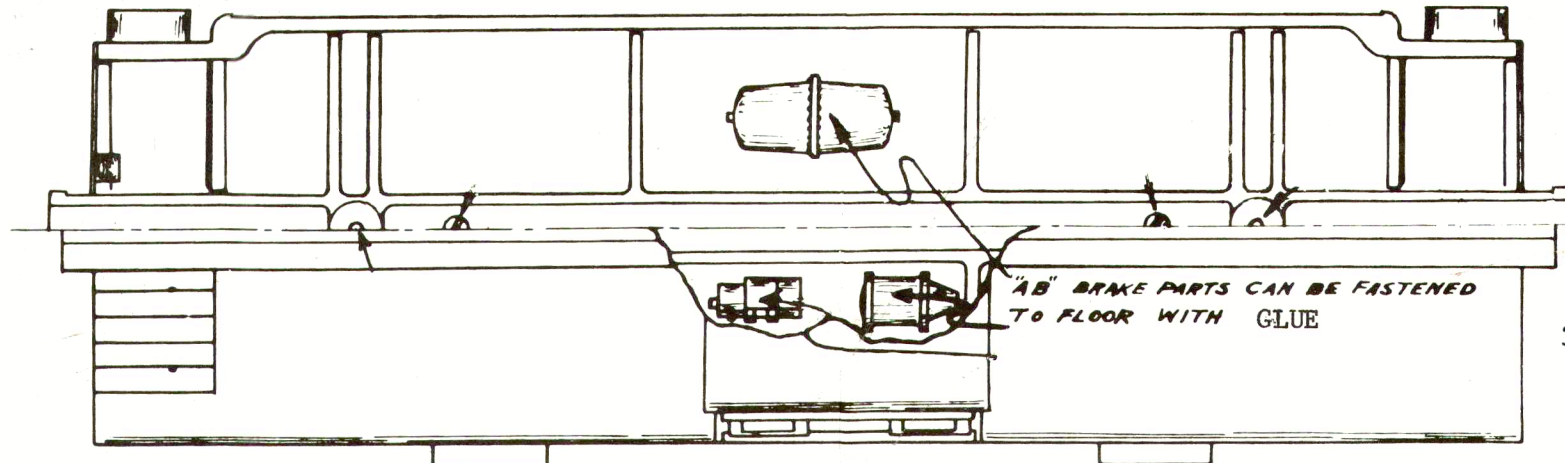
FASTEN BOTTOM OF PLATFORM
RAIL ASSEMBLY WITH FOUR
COMMON PINS. CUT PINS 1/2" LONG
INSERT IN #67 HOLES, BEND, AND
PRESS WITH PLIERS. OR WITH CRAZY
GLUE OR SOME OTHER SUPER GLUE.



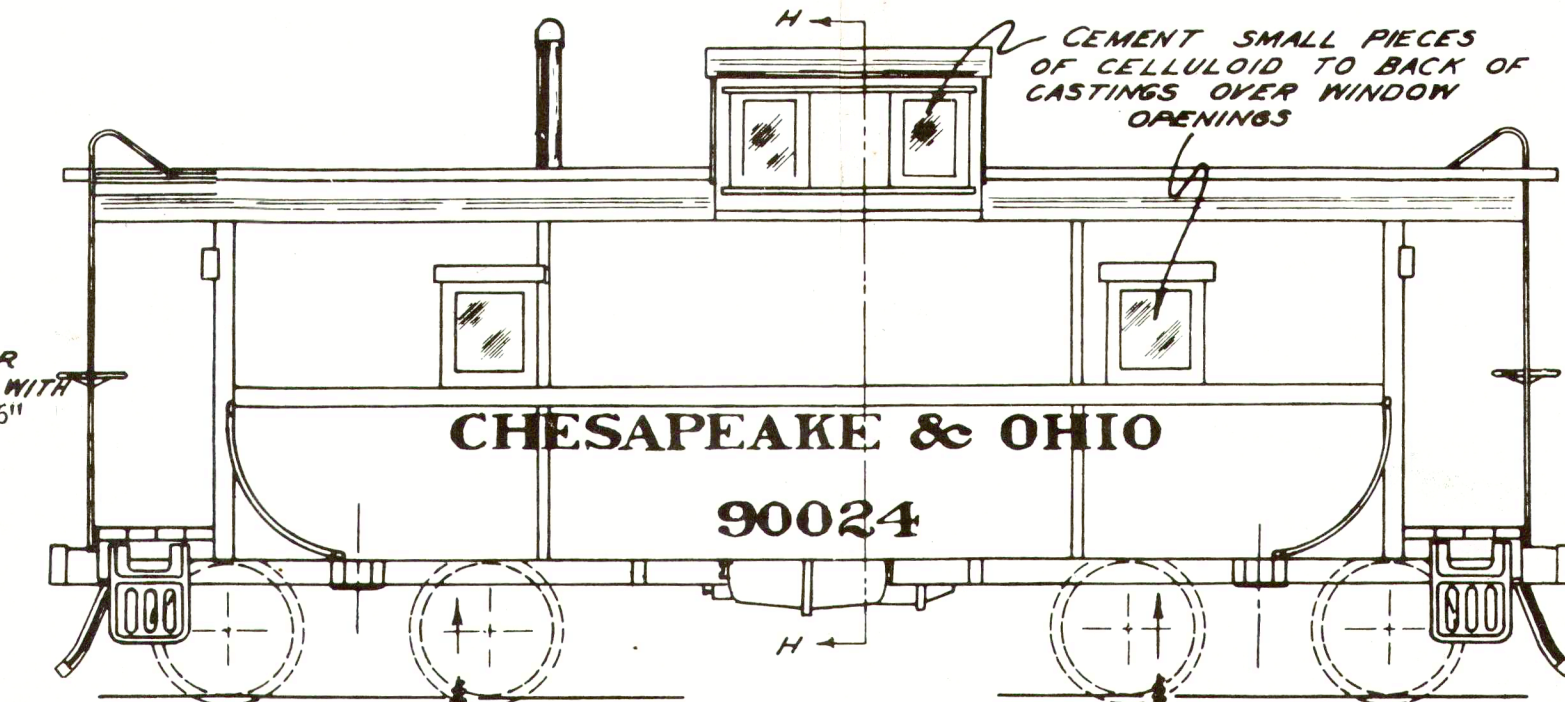
**AUTOMATIC COUPLER
DETAIL**

AUTOMATIC COUPLERS,
ALTHOUGH NOT FURNISHED
IN KIT, MAY BE ADDED
AS SHOWN

COMMON PINS



4" BRAKE PARTS CAN BE FASTENED
TO FLOOR WITH GLUE



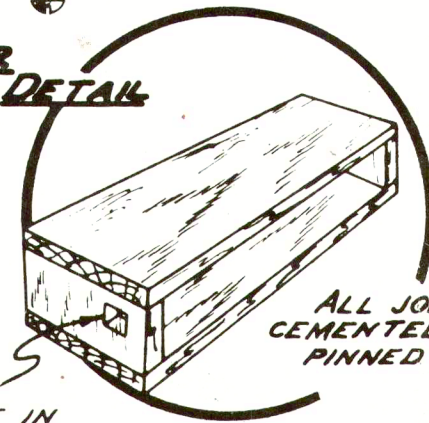
CEMENT SMALL PIECES
OF CELLULOID TO BACK OF
CASTINGS OVER WINDOW
OPENINGS

CHESAPEAKE & OHIO

90024

UNDERFRAME ATTACHED
WITH TWO 3/8" No. 2 WOOD SCREWS

**WOOD INNER
STRUCTURE DETAIL**

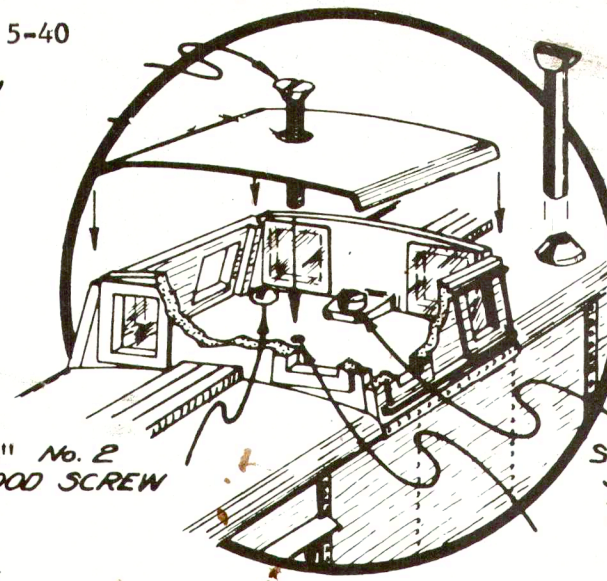


ALL JOINTS
CEMENTED AND
PINNED

HOLE CUT IN
EACH END FOR
WINDOWS.

CONSTRUCTION NOTES:

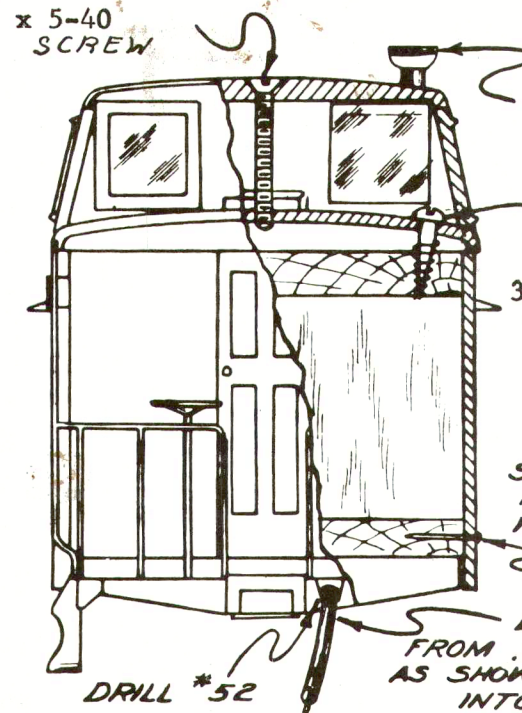
The inner structure of this car is assembled from wood as shown in the details, cement and bank pins are used in all joints. While this is drying, the casting may be cleaned. This is done with a file. Avoid filing excessively and keep the corners sharp and square, and the edges straight. Fasten the underframe on first with two wood screws as shown. The end castings should be held in place to help locate the underframe because they fit between the wood inner structure and the end platforms. Attach the side and end castings next. Use a thin layer of cement x 5-40 to secure them. Immediately wipe away any excess cement that may be squeezed out. The roof and capola ends are put on last. The ends are held each with a 1/2" self tapping screw and the roof with a 3/4" screw. The platform rail assemblies are attached as shown in the detail. First bend the ladder rails and force them into the holes in the roof,



3/8" No. 2
WOOD SCREW

SELF TAPPING
SCREW #4 x
1/4"

3/4" x 5-40
SCREW



3/8" No. 2
WOOD SCREW

FASTEN CAST
SIDES TO WOOD
INNER STRUCTURE
WITH GLUE

BEND AIR HOSE
FROM .032 WIRE
AS SHOWN AND FORCE
INTO PLACE.

DRILL #52

SECTION H-H

then insert and solder or glue as explained. Fasten the trucks with screws and the couplers with screws. The mounting of the smoke jack, marker lights, air hoses and air brake equipment is clearly defined in the drawing. The model is painted red with black roofs, platform, steps, and underframe.

THE
ALL-NATION LINE
C & O CABOOSE

1/4" = 1'-0"

DRAWN BY
Fred C. Tuxworth