

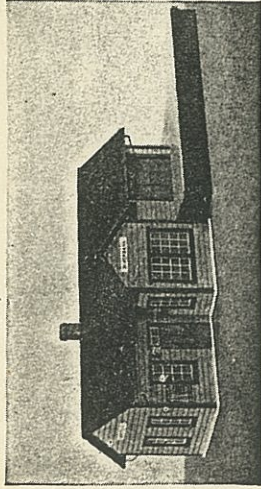
## LIST OF MATERIALS

- |                                  |                                    |                                   |
|----------------------------------|------------------------------------|-----------------------------------|
| 1 Pc. Base Board                 | Acetate — Windows                  | 4 Pcs. 1/32" x 1/32" Stripwood    |
| 1 Pc. Ceiling                    | 1 Pc. Scribed Stencil Board        | 4 Pcs. 1/16" Dowel                |
| 8 Pcs. Walls                     | 12 Pcs. Stencil Angle Trim         | 3 Pcs. 1/32" x 1/16" Stripwood    |
| 2 Pcs. Baggage Platform          | 4 Pcs. 1/16" Tagboard Trim         | 1 Pc. 3/32" Stencil Board — Steps |
| 4 Pcs. Baggage Platform Supports | 2 Pcs. 3/16" White Tagboard Trim   | 2 Pcs. 1/32" x 1/8" Stripwood     |
| 2 Pcs. Base Roof                 | 5 Pcs. 3/16" x 3/16" Wood Strips   | 3 Pcs. Brass Angle 8" Long        |
| 2 Pcs. Bay Roof Base             | 1 Pc. Stencil Board, Plain         | 1 Pc. Brass Angle 4" Long         |
| 1 Pc. Brick Paper                | 1 Pc. 1/16" x 1/8" x 2" Stripboard | 4 Cards of Asst. Signs            |
| 3 Pcs. Roofing Material          | 1 Pc. 1/2" x 1/2" x 1 1/2" Chimney | 1 Plan and Instruction Sheet      |

**INTRODUCCION:**\* This is not a difficult kit to build, but care and patience are necessary ingredients. The following tools are necessary for construction: Scale Rule, 12-Inch Rule, Sharp-Pointed Knife, Small Square, Tweezers, Razor Saw and Mitre Box, Pencil, Paint and Brushes. For gluing, Walther's "Goo" is recommended.

Begin construction by cutting out all the door and window openings using a sharp pointed knife. Get the exact opening size from the table on the plan. Cut the openings as square as possible. When this is done, glue the two gable ends to the edges of the base piece, **not on top.** Next, glue the front and rear walls in place, fitting each piece as you glue. Notice that the walls go past the gable ends. Trim the ends where necessary and make sure the corners are nice and straight. Now cut the 3/16-inch square wood strips and glue in place all around the inside of the building. We suggest that you mitre cut the wood at the corners, 45 degrees, for added strength. These strips are glued 1/16th of an inch down from the top of the walls so the ceiling will fit in the recess.

Cut, fit and glue in place all the stencil board angle trim on corners and around all the windows and door openings. See the detail on the plan. Install the door thresholds and all window sills. Cut, fit and install the door transoms and window dividers. The transoms are wood strips, 1/32" x 1/16", and the window dividers are 1/32" square stripwood. **Note:** The front bay window is divided in the exact-center by a 1/16" x 1/8" wood strip. When all the trim is in place, paint the walls with paint of the chosen color. This is the first coat. When this is dry, paint the trim with a contrasting color. Install the ceiling, but do not glue in place. Trim to fit where necessary.



Made By  
**ARVID L. ANDERSON**  
Frederic, Wis.

FOR:

## BUILDING INSTRUCTIONS

Glue the two sub roof pieces of construction board together at the center seam and place on building to get the correct pitch. **Do not glue to building.** Trim and glue the pre-finished roofing material to the sub roof and set on the building. Cut the ridge row to length, taking the measurement from the roof, bend to the correct angle, and cement over the seam in the top where the two pieces of roofing meet.

The baggage platform is next. Using the plan as a guide, measure out the sloping ramp and cut out completely. Save this piece. Be sure you have the ramp on the piece towards the rear of the platform. When this is done, glue the two platform pieces together at the center, being careful not to get glue on the scribed planking. When glue is dry, cut along the printed lines and remove this section. Check to make sure that the platform will slide around the baggage end of the building. Now glue the 7/8th inch wide scribed construction board to the bottom of the platform approximately 1/16th inch in from the edge of the platform. This goes all around the platform. Cut to length the 3/16 inch square wood strips and glue these supports in all the corners and along the walls as per plan. Set the unit on a flat surface and using the platform as a guide, take the correct angle for the slope on the ramp and cut two pieces of the scribed 7/8" construction board to this angle and glue to the bottom of the ramp piece. When this is done, attach to the platform. Construct the steps from the yellow stencil board and then glue in place. Paint or stain the entire platform unit a dark brown and set aside to dry.

From the unscribed yellow stencil stock, cut and fit all the doors, except the baggage doors and glue in place. Paint the 3/16 inch wide

white tagboard strips and let dry. Now paint the doors and when dry, cut and install the painted 3/16 inch wide strips in place as per plan. These painted strips form the door panels. From the scribed stencil stock, cut and fit the baggage doors and glue in place. Paint the 1/16 inch wide tagboard strips and let dry. Paint the baggage doors and when dry, cut and glue the 1/16 inch strips and trim the corners, doors and windows for the second time. When the paint is completely dry, cut and install the window glass (Acetate). Be careful not to get glue on the glass. Now paint the walls for the second time and let dry. Replace the roof on the building and install the sub roof over the bay. Trim if necessary and then glue this roof to the main roof only. Next, glue the pre-finished roofing to the sub roof over bay and install the ridge row as you did on the main roof. Be careful and get a nice fit. Paint the edges of the sub roof with the trim color.

Cut, fit and install the gutters. These are made from the brass angles provided. Glue in place the downspouts. These are 1/16" wood dowels. Paint the gutters and the downspouts.

The chimney is made from the 1/2 inch square wood piece. Cut this piece to the correct angle using the pitch of the roof as a guide. When the correct angle is attained, paint the top of the chimney flat black. Cover the entire chimney with the brick paper provided and glue in place on the roof.

Glue the completed baggage platform to the baggage end of the building. Touch up the paint wherever necessary. This completes the model. Additional details, such as interiors, lights, etc., can be added by the builder if so desired.

