

## C. & N W CABOOSE CIRCA 1928

Notch end blocks for  $1/8 \times 1/4 \times 7 \ 9/16"$  as shown in Fig. 1. Glue End Blks. to floor, making sure they are at 90 degrees as in Fig. 2. Glue stringers in notches. Glue roof boards on about a 10 degree angle, and let dry. Glue bolster/platform casting to floor making sure bolster is square with floor. Also make sure platform section is up tight against floor. After glue is dry, drill 2 holes (#48 drill), and secure with #2 X 3/8 flat hd. screws. Metal platform should be about 1/32 below bottom of floor. Cut center spacer (part 202) as shown in Fig. 3. Glue in center of car so that peaks on both ends and middle spacer are all on the same plane. Glue steps to end platform using super glue. (Etch metal surfaces slightly with a fine file for better bonding.) Make sure top of step riser is flush with top of platform. Be sure steps are square with platform, car body and floor. Cut wood overlays for car ends and platforms from 1/32 X 3/8 scribed sheet. Cut ends overlays a little longer than actual end. We will sand these later when mounting sides. Glue overlay to car end making sure that portion where door fits into is glue free to make it easier to cut door opening. Use door for template. Scribe with very sharp pencil. Glue overlays to platforms. You might want to paint interior of car grey at this time, including back of ends, floor, sides, and inside of roof. Paint Underframe and parts to go under car as well as floor. You might as well paint the smoke stack black at this time. Paint window castings, roofwalk, supports, doors, end walks, Bay Windows, sides, and end beam and steps, CABOOSE RED.

To affix the railing to caboose end beam, lay same on table facing end beam as in Fig. 5. Use very sharp pencil or other sharp marking tool as center punch to mark holes on end beam, as in Fig. 5. Drill #65 with PIN VICE, or some other method of drilling holes thru end beam, making sure holes are in center of beam. When you mount the railing, make sure it is 5/8' in height above the end platform overlay. Mount Bay Window 3 1/16" from one end. Glue to floor and stringer. Cut window holes in sides with VERY SHARP Exacto Knife. Glue Window Frames in sides. Now is the time to mark sides and ends with sharp tool and drill holes for hand holds. Glue acetate in windows and Bays before mounting. Mount End Railing and End Beam to steps and Platform end. Now sand end overlay flush with car ends. Sand a slight bevel to car side that fits against Bay, and glue sides to floor and stringers. Bend .032 wire into necessary configurations for hand holds and paint yellow along with end railing. Glue 21 1/16" square roof walk supports to under side of roofwalk as shown in drawing. Paint roof walk Cab. Red and let dry. Paint roof Dark Grey or Black to simulate Tar Paper. Paint roof end walks and roof walk end supports Caboose Red and glue in place. Drill #23 drill and mount as in drawing.

Form ladders according to drawing and mount on top of end railing with notch on top railing horizontal wire. Use super Glue. Mount marker lite to short end of car. Use #60 Drill. Mount Underframe and Brake Parts and couplers along with Trucks. Put Decals on at this time before Glueing roof to car body.

If you are building the 1950's rebuilt version W/curved railing, glue the railing to 3/32 X 1/8 end beam. Mark bottom of beam with sharp pencil using dimensions in Fig. 2. Also mark holes for brake staffs and drill holes w/#65 drill. Insert .032 1" wires to top rail, and glue to both top railing and end beam. If you are good at soldering, solder vertical wires to top railing.

If you are modelling the C&NW Caboose, cut top rail as shown in picture. Attach chain to 2 middle vertical rails.

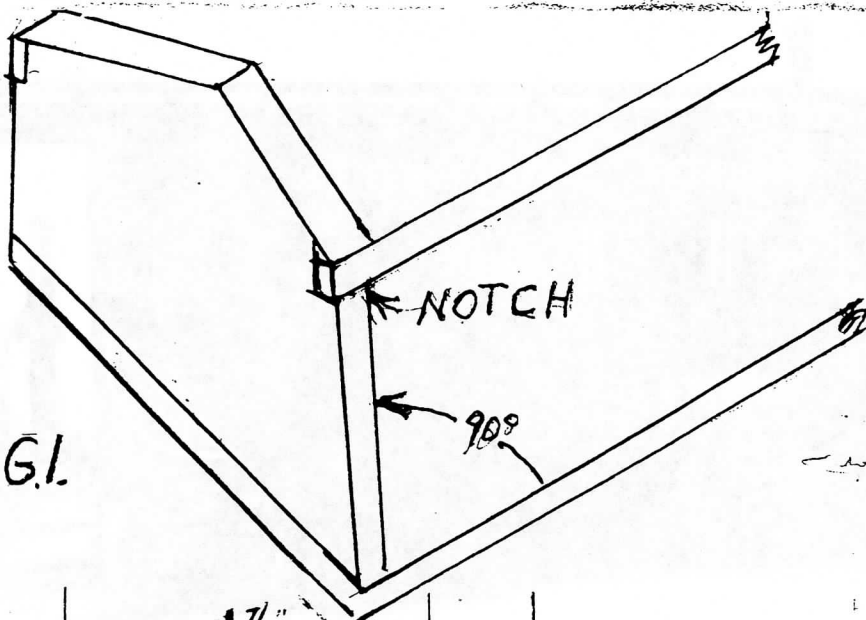


FIG. 1.

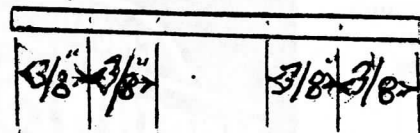
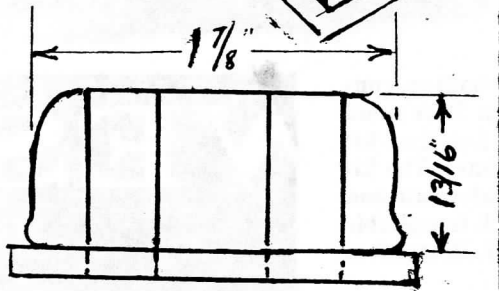


FIG. 2

FIG. 3.

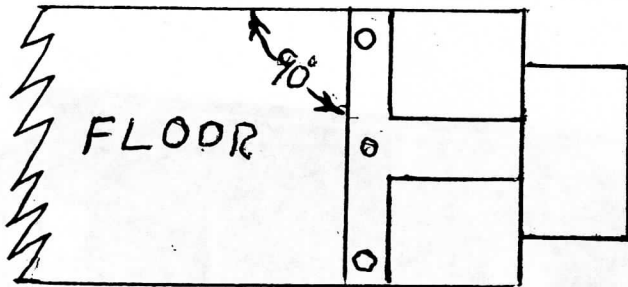


FIG. 4.

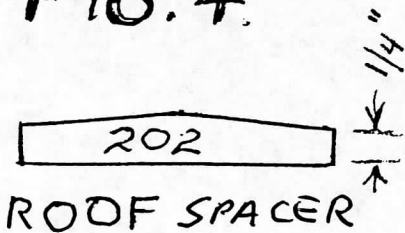
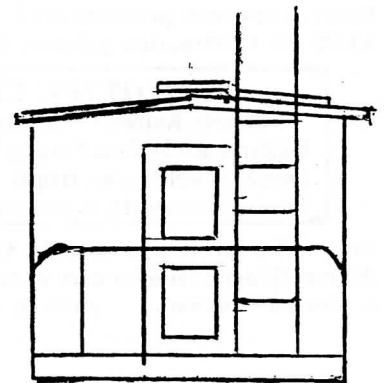
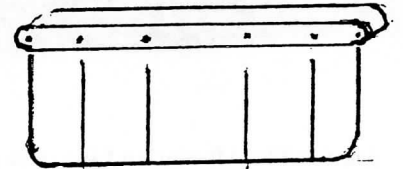
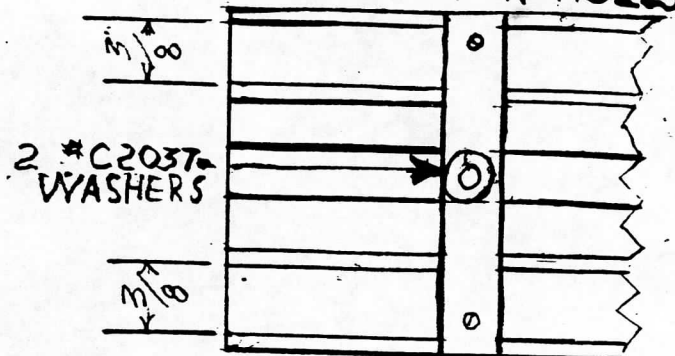


FIG. 5



UNDERBODY DETAIL.  
 5/32" X 3/32" BEAMS  
 3/8" APART  
 GLUE 2 3/8" WASHERS  
 TO BOLSTER HOLES





C&NW 10304-053  
Chicago & North Western 10304 (caboose)  
Restored at IRM in Oct 1998  
Photo by Greg Heier