

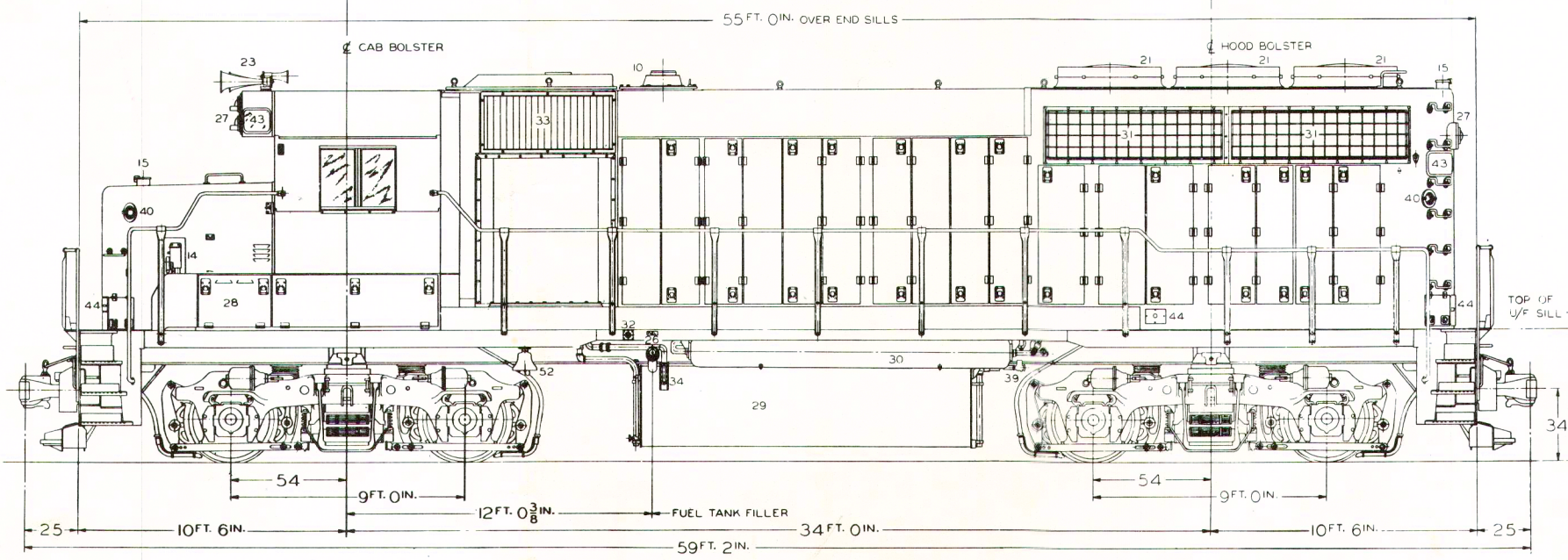
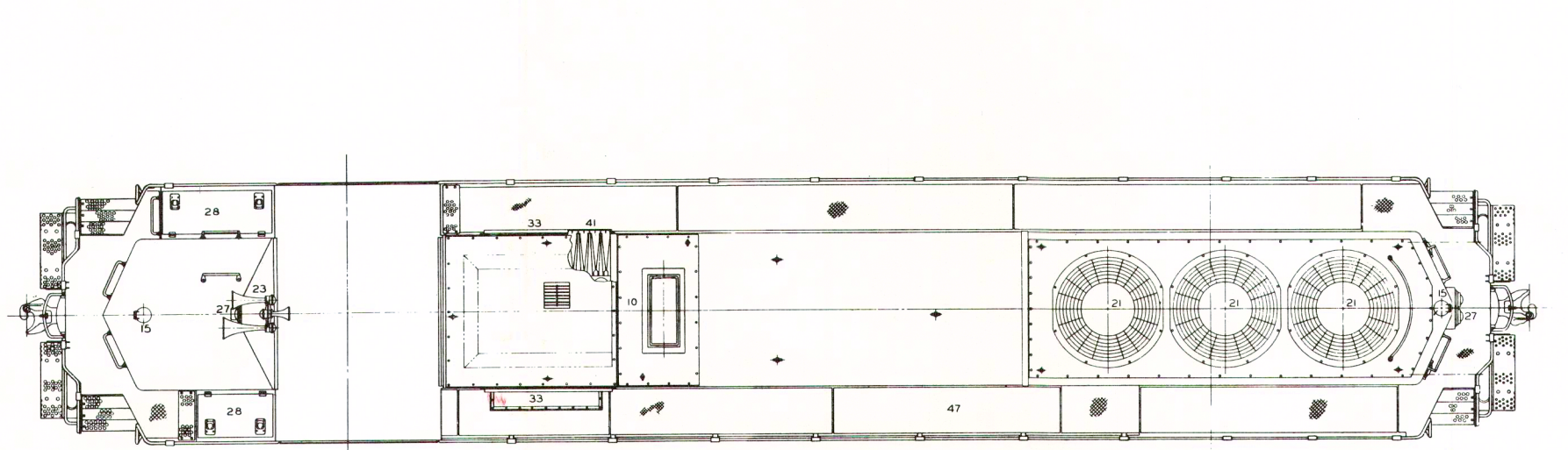
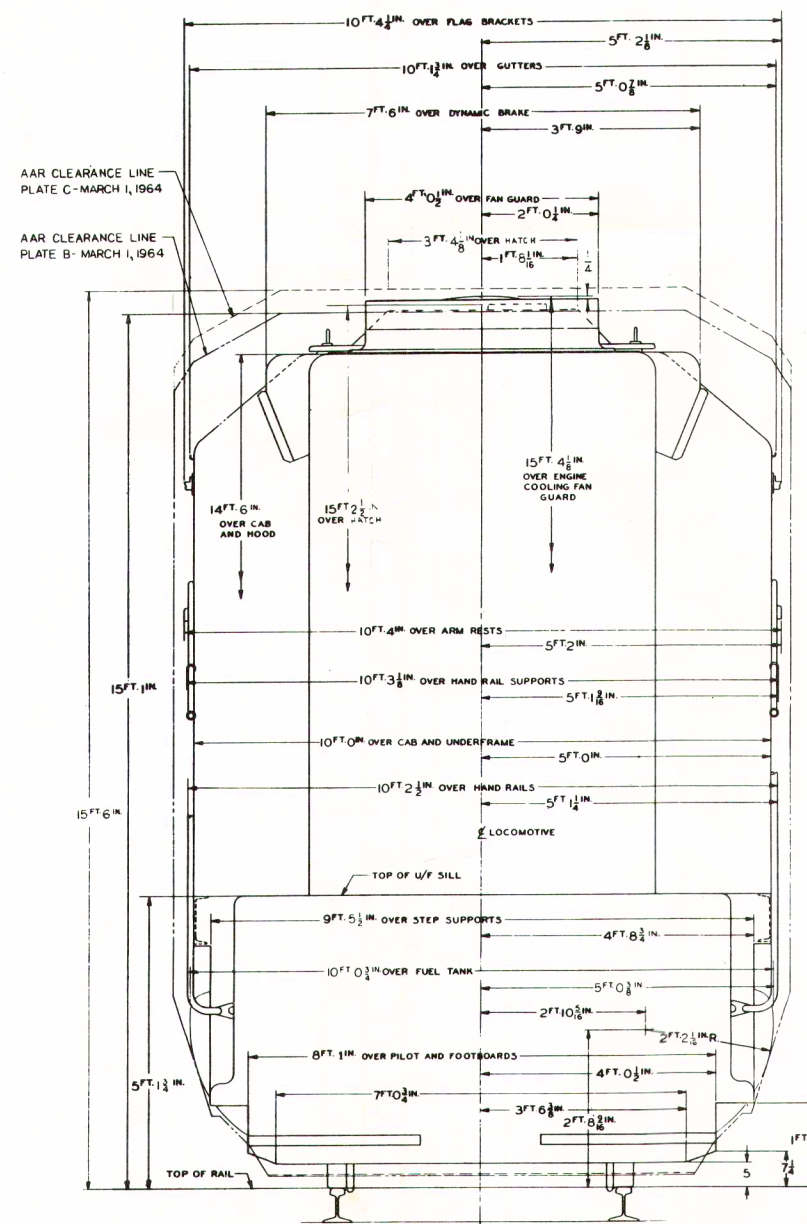
3000 HP GENERAL PURPOSE LOCOMOTIVE MODEL GP40

NOTE:
 LOCO. HEIGHT TOLERANCE = $\pm 1\frac{1}{2}$ "
 LOCO. WIDTH TOLERANCE = $\pm 1\frac{1}{2}$ "
 TRUCK LATERAL AT BOLSTERS = $\pm 2\frac{1}{4}$ " NOM.

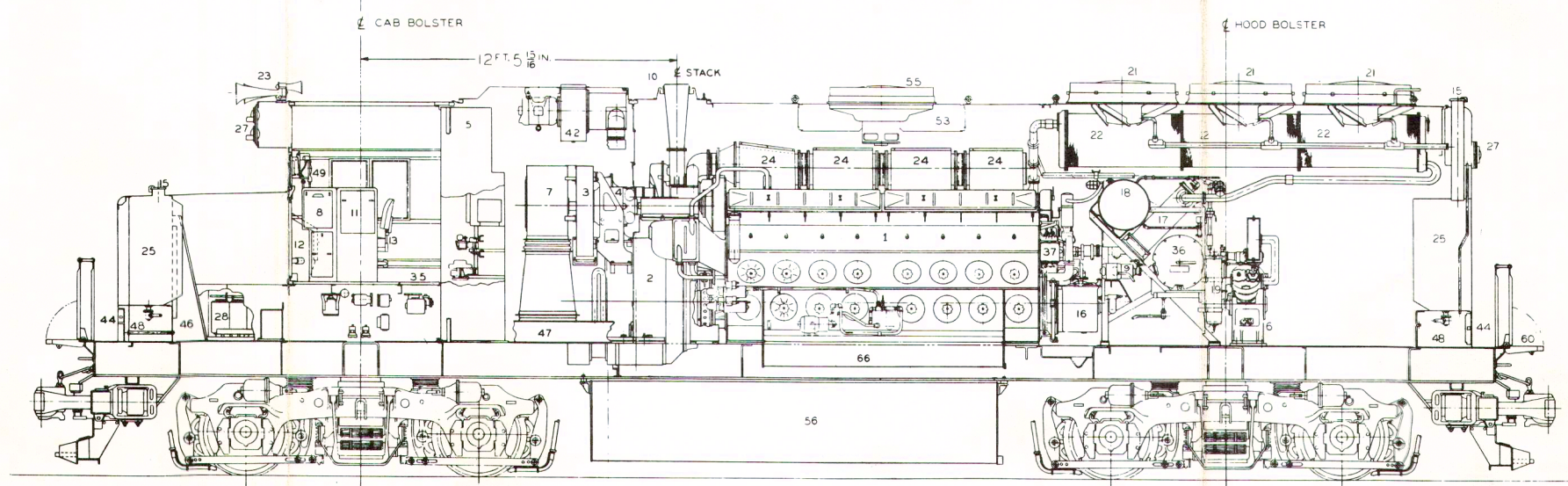
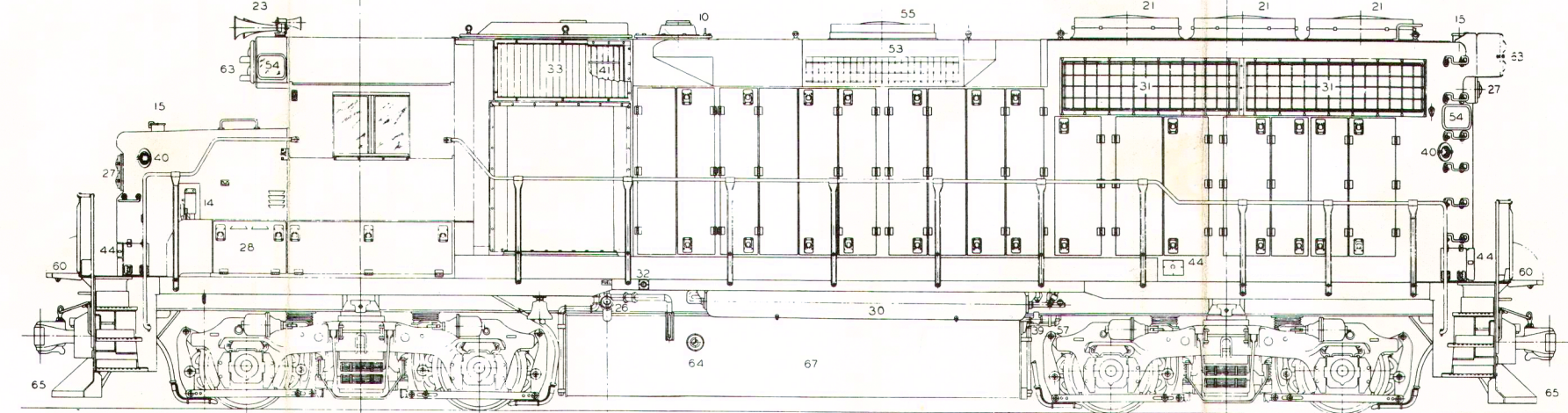
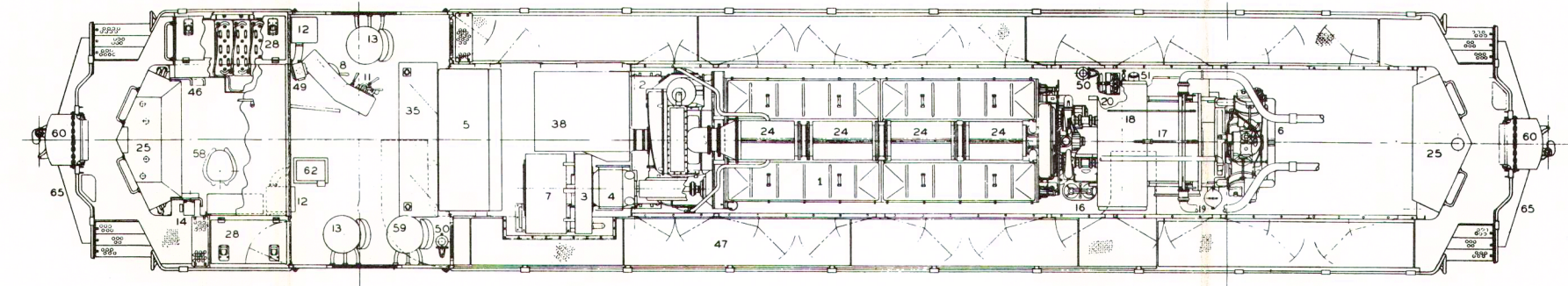
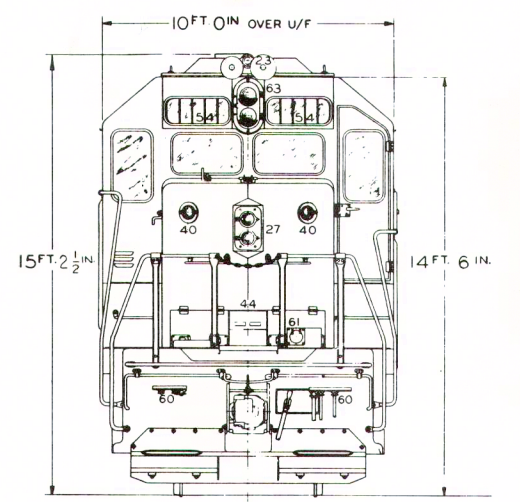
LOCOMOTIVE IS SHOWN INCLUDING HALF VARIABLE SUPPLIES AND IN NEW CONDITION, STANDING STILL ON LEVEL AND TANGENT TRACK.

- | | | | |
|----------------------------------|---|---|--|
| 1. ENGINE - EMD MODEL 16-645E-3 | 21. 48 INCH FAN AND MOTOR | 41. INERTIAL AIR SEPARATOR | * 61. M.U. RECEPTACLE |
| 2. MAIN GENERATOR AND ALTERNATOR | 22. RADIATOR | 42. DUST EVACUATING BLOWER | * 62. WATER COOLER |
| 3. GENERATOR BLOWER | 23. HORN | 43. NUMBER BOX | * 63. SIGNAL LIGHT |
| 4. AUXILIARY GENERATOR - 10 KW | 24. EXHAUST MANIFOLD | 44. WALKWAY LIGHT | * 64. LIQUIDOMETER FUEL GAUGE |
| 5. CONTROL CABINET | 25. SAND BOX | 45. FUEL SUCTION STRAINER | * 65. PILOT |
| 6. AIR COMPRESSOR | 26. FUEL FILLER | 46. COLLISION POST | * 66. ENGINE SUMP - INCREASED CAPACITY |
| 7. TRACTION MOTOR BLOWER | 27. HEADLIGHT - TWIN SEALED BEAM | 47. TRACTION MOTOR AIR DUCT | * 67. FUEL TANK - 3600 GALLONS |
| 8. ENGINEER'S CONTROL | 28. BATTERIES | 48. SAND TRAPS | |
| 9. FUEL PUMP | 29. FUEL TANK - 2600 GALLONS | 49. SPEED RECORDER | |
| 10. ENGINE EXHAUST STACK | 30. MAIN AIR RESERVOIR | 50. FIRE EXTINGUISHER | |
| 11. AIR BRAKE VALVE | 31. AIR INTAKE AND SHUTTERS | 51. ENGINE WATER FILLER | |
| 12. CAB HEATER | 32. EMERGENCY FUEL CUTOFF | 52. BELL | |
| 13. SLIDING SEAT | 33. ENGINE ROOM AIR INTAKE | * 53. DYNAMIC BRAKE | |
| 14. HAND BRAKE | 34. FUEL TANK GAUGE | * 54. NUMBER BOX - CHANGEABLE NUMBERS | |
| 15. SAND BOX FILLER | 35. TRAP DOOR | * 55. DYNAMIC BRAKE FAN | |
| 16. LUBE OIL FILLER | 36. LUBE OIL FILTER | * 56. FUEL TANK - 3200 GALLONS | |
| 17. LUBE OIL COOLER | 37. DUAL FUEL FILTER | * 57. AUTOMATIC DRAIN VALVE - NO. 2 RESERVOIR | |
| 18. ENGINE WATER TANK | 38. ENGINE AIR FILTER UNIT | * 58. TOILET | |
| 19. FUEL PRESSURE FILTER | 39. AUTOMATIC DRAIN VALVE - NO. 1 RESERVOIR | * 59. THIRD CAB SEAT | |
| 20. LOAD REGULATOR | 40. CLASSIFICATION LIGHTS | * 60. M.U. END ARRANGEMENT | |

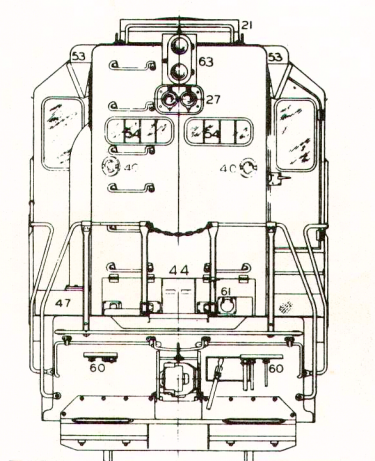
* MODIFICATIONS



BASIC LOCOMOTIVE



LOCOMOTIVE WITH EXTRAS



ELECTRO-MOTIVE DIVISION
 GENERAL MOTORS CORPORATION
 LA GRANGE, ILLINOIS, U.S.A.