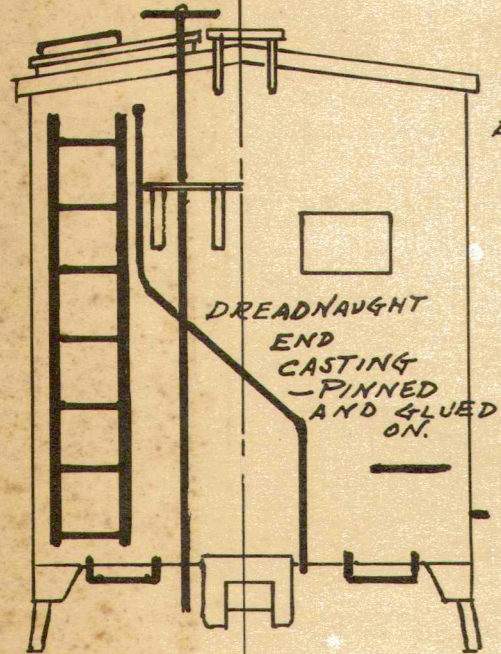


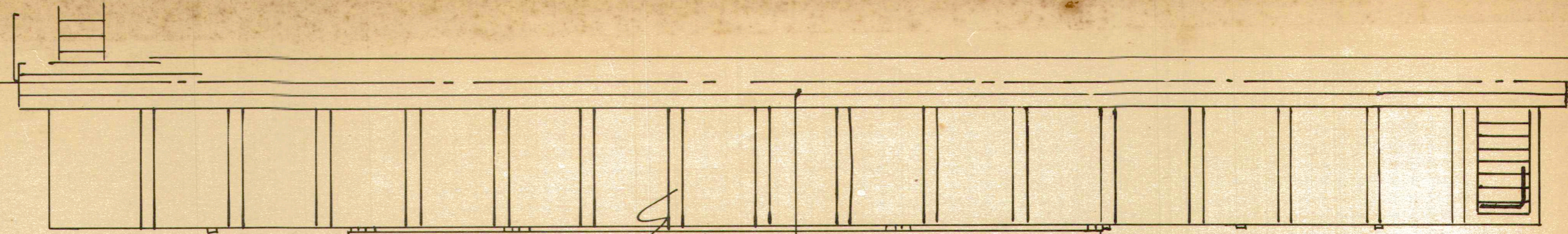
CUT AWAY THIS PORTION OF ROOF TO RECEIVE END CASTING.



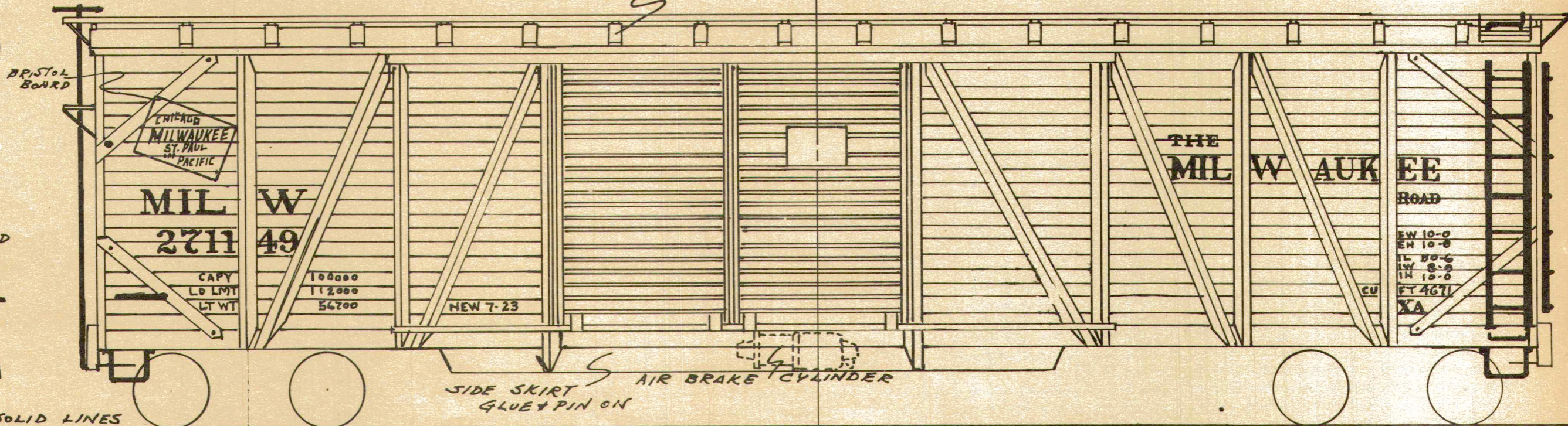
DREADNAUGHT END CASTING - PINNED AND GLUED ON.

WIRE PARTS SHOWN IN SOLID LINES

LADDER - DOORS - ENDS - STIRRUP STEPS - FASTEN ON WITH SMALL (BANK) PINS



BRISTOL (CARD) BOARD STRIPS - GLUED ON



BRISTOL BOARD

CHICAGO
MILWAUKEE
ST. PAUL
AND
PACIFIC

MIL W
2711 49

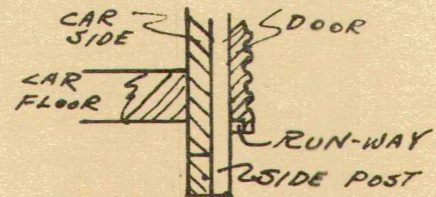
CAPY 100000
LD LMT 112000
LT WT 56700

NEW 7-23

THE
MILWAUKEE
ROAD

EW 10-0
EN 10-0
IL 80-6
IW 8-9
IN 10-0
FT 4671
XA

SIDE SKIRT GLUE & PIN ON AIR BRAKE CYLINDER



CAR SIDE DOOR

CAR FLOOR

RUN-WAY

SIDE POST

LIST OF MATERIALS

- WOOD BODY - RUNBOARDS & SUPPORTS
- COMPLETE BUNDLE WOOD STRIPS
- 2 ENDS - 2 - 12' DOORS
- 4 LADDERS - 7 RUNG
- BRAKE WHEEL - CYLINDER - WHEEL.
- BRISTOL BOARD
- COMPLETE FRAME
- STIRRUP STEPS.
- WIRE FOR GRAB IRONS
- BANK PINS
- PAINT - TRANSFER - PRINT

Scale Model Railways

Incorporated
Huntington : Indiana
Subsidiary of MEGOW, Phila., Pa.