

W. W. LOVELAND
2908 CODY COURT
WAUKESHA, WIS. 53186

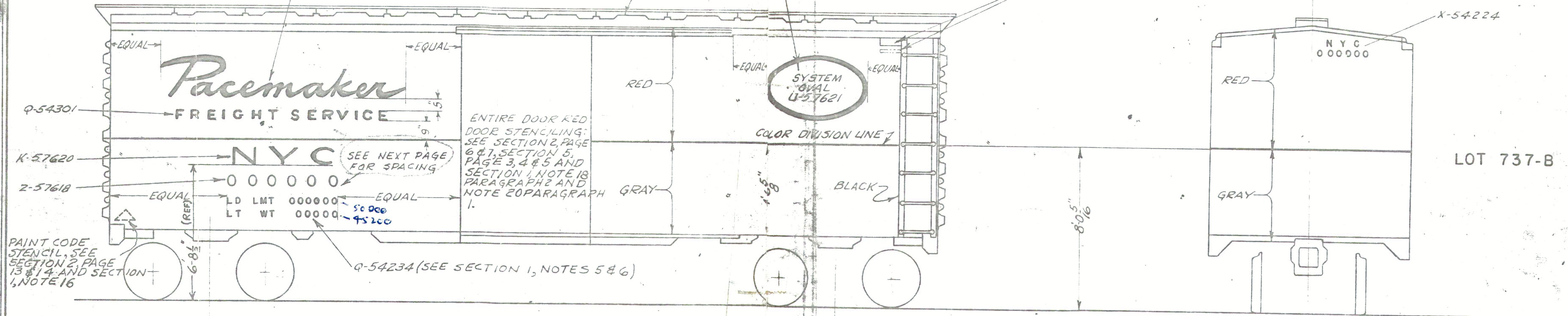
Y-54306
N-54307
N-54308

174000 SERIES

SYSTEM OVAL, SEE SECTION 4, PAGE 2 AND SECTION 1, NOTE 2.

OWNERSHIP, TRUST NUMBERS AND OWNERS PLATE (AS SHOWN AND DIAGONALLY OPPOSITE) SEE SECTION 1 NOTE 25.

ROOF: BLACK F-1 CAR CEMENT



PAINTING INSTRUCTIONS

(a) TOP PORTION OF CAR BODY AND ENTIRE DOOR TO BE PAINTED RED AND BOTTOM PORTION TO BE PAINTED GRAY AS INDICATED ON THIS DRAWING.
 (b) ROOF TO BE PAINTED WITH F-1 CAR CEMENT. (BLACK)
 (c) UNDERFRAME TO BE PAINTED WITH F-1 CAR CEMENT. (BLACK)

(d) SIDE AND END LADDER STYLES, LADDER TREADS, ALL SIDE AND END HANDHOLDS AND HAND BRAKE WHEEL TO BE PAINTED BLACK.
 (e) ALL SILL STEPS AND UNCOUPLING RELEASE RIGGING TO BE PAINTED GRAY.
 (f) FRONT DOOR STOP AND DOOR FIXTURES ATTACHED TO CAR BODY LOCATED BELOW RED

DIVIDING LINE TO BE PAINTED GRAY.
 (g) DOOR TRACK AND SIDE SILL BELOW DOOR IN CLOSED POSITION TO BE PAINTED RED.
 (h) THE FOLLOWING STENCILING TO BE APPLIED ON CENTER SILLS IN 1" CHARACTERS;
 LOT N^o 737-B
 DATE BUILT

LT. WT. 00000 EB (MO. & YR.)
 REPACKED STENCIL
 SWIVEL COUPLER
 1-W WROT STEEL WHEELS
 TWIN CUSHION DRAFT GEAR
 (SEE INDEX - SECTION 1 FOR NOTES COVERING ABOVE STENCILING)

PAINTING AND LETTERING
PACEMAKER
BOX CARS

SECTION 3

ISSUED OCT. 11, 1955 REVISED

PRINTED IN U.S.A. SUPERSEDES: SK.V-6378-E

J-56487

PAGE 1