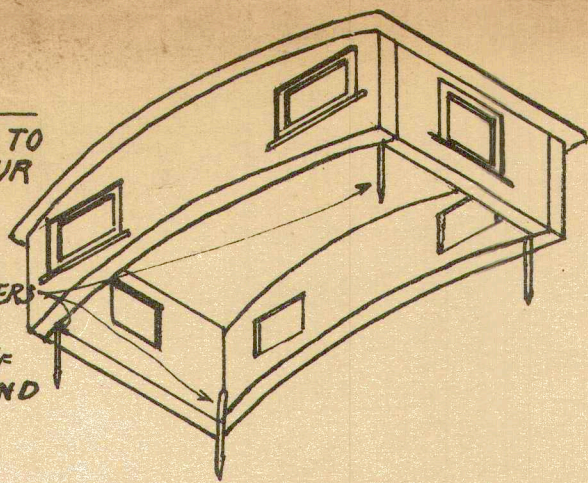
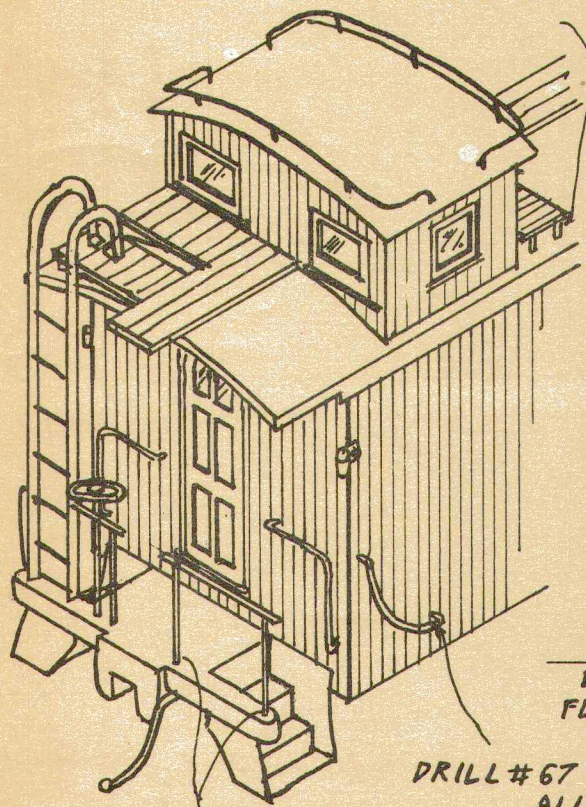


FILE CUPOLA CASTINGS TO FIT TOGETHER & CONTOUR OF ROOF. SOLDER TOGETHER BEING CAREFUL TO KEEP SQUARE. SOLDER BRADS IN CORNERS. SOLDER $1\frac{9}{16}$ X $2\frac{3}{8}$ ROOF TO SIDES. CLEAN OFF ALL EXCESS SOLDER AND PUSH INTO ROOF.

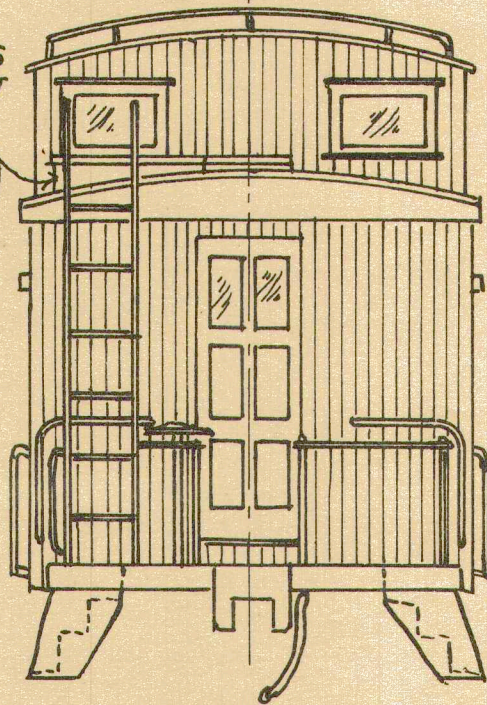


DRILL #67 HOLES IN ROOF FOR SAFTY RAILS. BEND RAILINGS TO SHAPE AND SOLDER IN PLACE.

WHITTLE BRACES FROM WOOD TO FIT

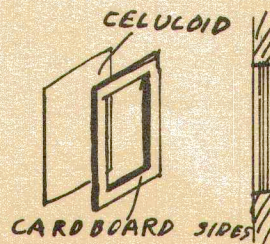


DRILL #67 HOLES IN END SILL FOR RAILING POSTS SOLDER RAILINGS & LADDERS IN PLACE

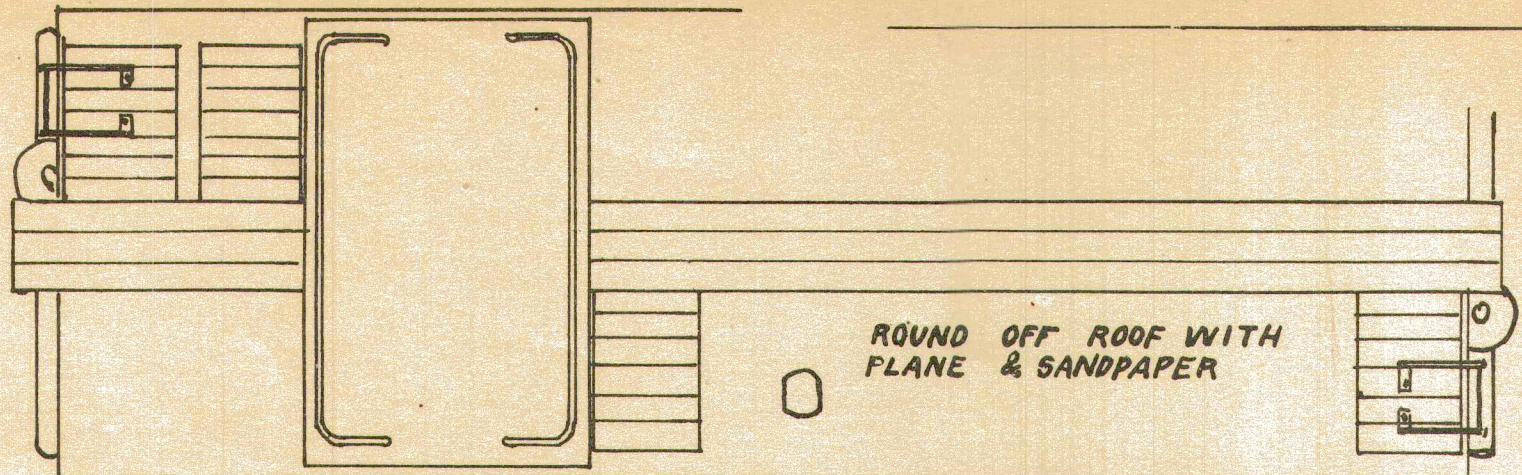


BRAKE HOSE BENT FROM $\frac{1}{16}$ " DIA. WIRE & SOLDERED TO UNDERFRAME. FLATTEN END WITH HAMMER.

DRILL #67 HOLES FOR ALL GRAB IRONS IN SIDES



CUT WINDOW OPENINGS IN SIDES & CEMENT CELULOID & SASH IN PLACE



ROUND OFF ROOF WITH PLANE & SANDPAPER

$1\frac{5}{16}$ $2\frac{3}{4}$

SCRIBE SHEATHING AGAINST SQUARE WITH A BLUNT POINT.



G. N. CABOOSE

Scale Model Railways

Incorporated

Huntington : Indiana

Subsidiary of MEGOW, Phila., Pa.