

OF-104
OF-105

"O" GAUGE BOX CAR KIT

Assembly Instructions

Drills Required: #50 and 72

HELPFUL SUGGESTIONS:

- A. Read the instructions and assembly drawings carefully before starting any assembly work.
- B. Check and identify all parts in the kit with the packing list. If any parts are missing or seem to be defective please notify us immediately. We will replace them at no extra charge.
- C. Whenever you assemble wood parts use both bank pins and cement. This will insure a stronger assembly. Where you are using pins, drive the pin in approximately $\frac{2}{3}$ of its length, then clip off the head with a pair of clippers. Drive the balance in flush. This will give you a neater model.
- D. Always make a starting hole with either a #74 drill or common sewing needle held in a pin vise before driving any pin or wire form into a wood member. By doing this you will save a great many headaches because of the wood members splitting.
- E. If you are painting your model with more than one color of paint, let the first color dry completely before putting on the second color. An added help will be to apply masking tape to the edges of the first color before painting with the second color. This will keep the second color from running over the first color and spoiling your job.

ASSEMBLY STEPS:

1. Attach wood car ends to the wood floor. The bottom of the ends should be flush with the bottom of the floor. Now attach roof and sides using both the cement and bank pins in all cases.
2. Add the roof details to the roof, such as the running board saddle, the running board and the roof walks. (See your print) Scrap pieces of the running board saddle can be used to raise the roof walks to the running board height. Again use both your cement and pins.
3. Mount the corner grab irons to the roof walks by drilling three #72 holes in the roof walk; one for each end of the grab iron and one for the eyelet. The eyelet comes at the bend of the grab iron. (See print for mounting position) If ends of grab iron and eyelet are dipped in cement before inserting into their holes they will hold far better.
4. Attach the running board supports and brake platform using either a bank or escutcheon pin. Leave the heads on.
5. Drill a #50 hole in each coupler and cut off the unused portion of the coupler shank. For position of hole see print.
6. Look over the die case underframe and remove any flash or fins.
7. Insert the coupler in the underframe coupler pocket and drive in a #16 escutcheon pin from the bottom of the underframe up through the bottom of the coupler pocket, coupler, and top of the coupler pocket. Cut off the unused portion of the point and rivet it flush with the top of the frame. Be sure that the coupler jaws open in the right direction as they will be in a reverse position when you are inserting the #16 pin.
8. Mount the air brake cylinder to the lug on the underframe with a #2 x 3/16 binding head, self tapping screw.
9. Insert the king pins (truck mounting pins) into the counter sunk holes on the top of the underframe and attach the underframe to the car floor with the #2 x 3/8 round head wood screws.
10. Solder door routing boards to metal doors and pin car end routing boards to car body as shown.
11. Drill a #72 hole at each end of the 4-door runners. Mount the bottom runners to the car side, then place the doors into position and mount the top runners. If you desire to keep the doors in a stationery position, drill a #72 hole through each door at the bottom and fasten with a pin.
12. Mount the rivet band strip as shown in the print on the car ends using #24 pins.
13. Attach the balance of the hardware such as the ladder, steps, and poling pockets with the pins included. Be sure in all cases to make starting holes.
14. Form brake shaft and retaining valve pipe from the #20 brass wire. See print for shape and position.
15. Solder brake shaft and retaining valve pipe to the brake platform and the brake wheel to the brake shaft.
16. The car should now be assembled and ready for painting. Sand paper all edges smooth and fill up all holes with wood filler. De-grease all metal parts as far as possible, using either vinegar or some household cleaning fluid.
17. Paint car body and truck sides.
18. Put on your decalomania and mount the trucks.

OF-104
&
OF-105

"O" Gauge Box Car Kit

Checking & Packing Slip

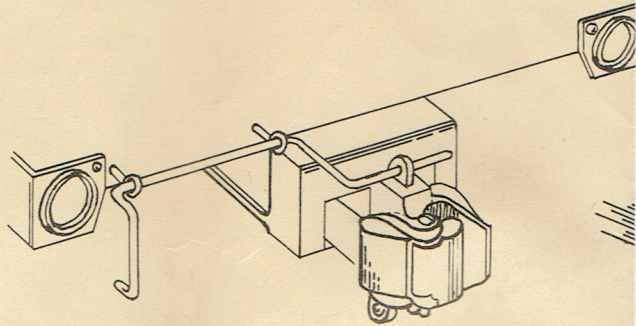
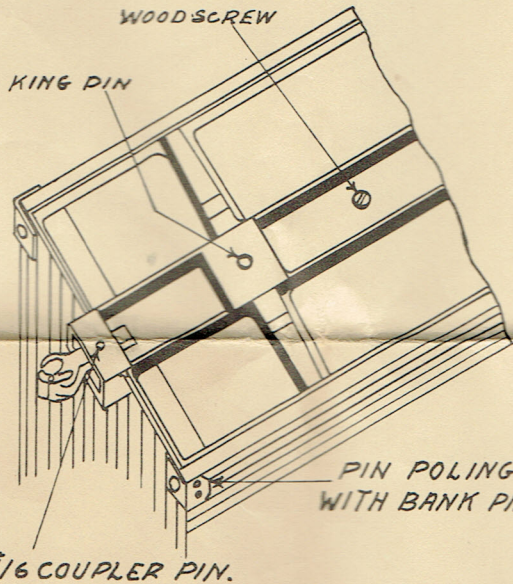
No. Req'd.	Part Number	Description
1	OF-1037	Underframe
1	OF-9086	Running Board
2	OF-9084	Box Car Side
1	OF-9019	Box Car Roof
2	OF-9020	Box Car End
1	OF-9085	Box Car Floor
2	OF-9089	Roof Walk - Wood
1		Tube of Cement
1 pkg.		Pins
1		No. 20 Brass Wire, 10" long
1 pkg.		#24 Escutcheon Pins
1 pr.		Trucks
1 set		Instructions
1	OF-9087	Running Board Saddle
1	OF-104	Assembly Drawing
1	OF-301	Hardware Kit
	1	OF-5098 Brake Platform
	2	OF-5056 Running Board Brace
	4	OF-5060 Box Car Step
	2	OM-1042 Solid Couplers
	1	OF-1045 Brake Cylinder
	4	OF-5101 Poling Pocket
	4	OF-5100 "Z" Bar Door Runner
	4	OF-5058 Box Car Ladder
	1	OF-9090 Rivet Bank Strip
	2	OF-3036 Drilled King Pin
	2	OF-9025)
		OF-9026) Roof Corner Hand Grabs
	2	Coupler Pin, No. 16
	2	No. 2 x 3/8" Rd.Hd.B. Wood Screws
	2	1/32" Cotter Pin
	1	No. 2 x 3/16" B.Hd.Self-Tapping Screw
	1	OF-5057 A.R.A. Brake Wheel
		or
	1	OF-5097 Ajax brake wheel and
	1	OF-5137 Ajax Brake Housing
	2	OF-5096 Doors
	8	OF-9028 3/8" Plain Grab Iron
	2	OF-9029 Depressed Grab Iron
	2	OF-5167 Routing Board
1		1/2 ounce Bottle of Paint
1 set		Decalcomanias

PACKED BY _____

CHECKED BY _____

SCALE-CRAFT & CO.

ROUND LAKE, ILLINOIS

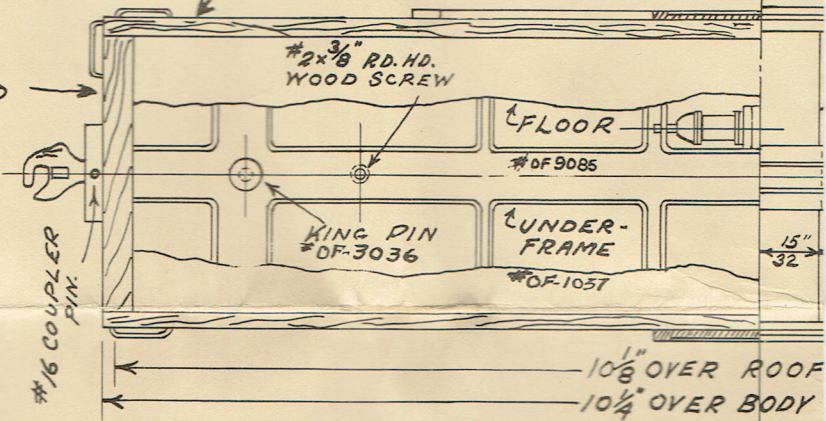


TOP OPERATED

SUGGESTED METHOD OF MOUNTING IF
AUTOMATIC COUPLERS ARE USED

PIN POLING POCKETS #OF-5101
WITH BANK PINS. SIDES #OF-9084

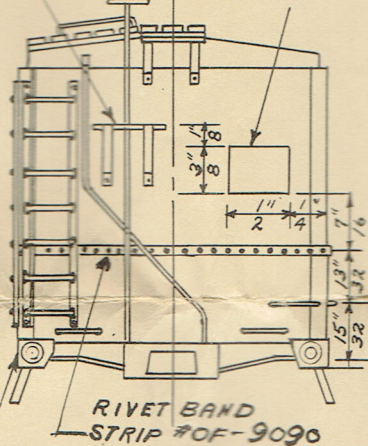
END #OF-9020



BRAKE WHEEL HALF SECTION
OF-5057

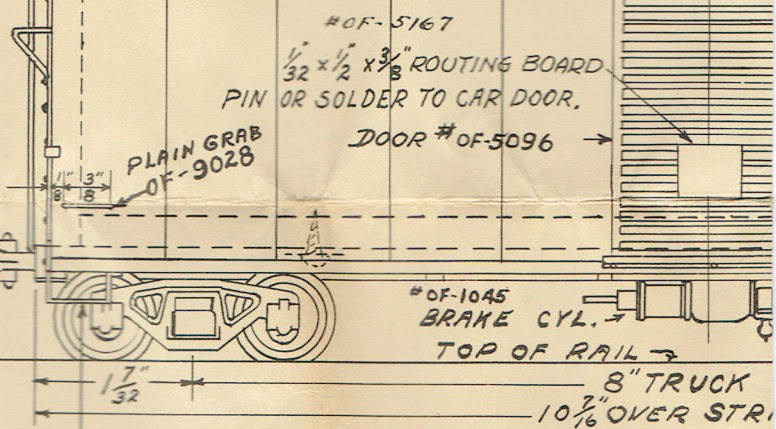
10 9/16" OVER RUNN.
RUNNING BOARD BRACE #OF-5056
RUNNING BOARD #OF-9086

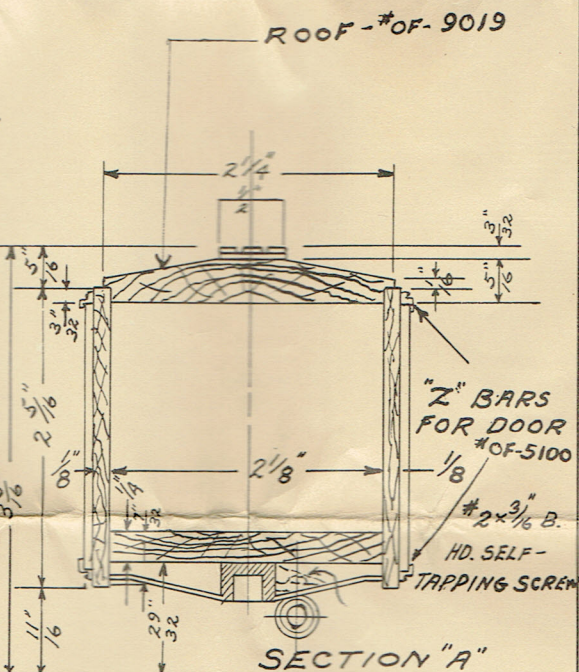
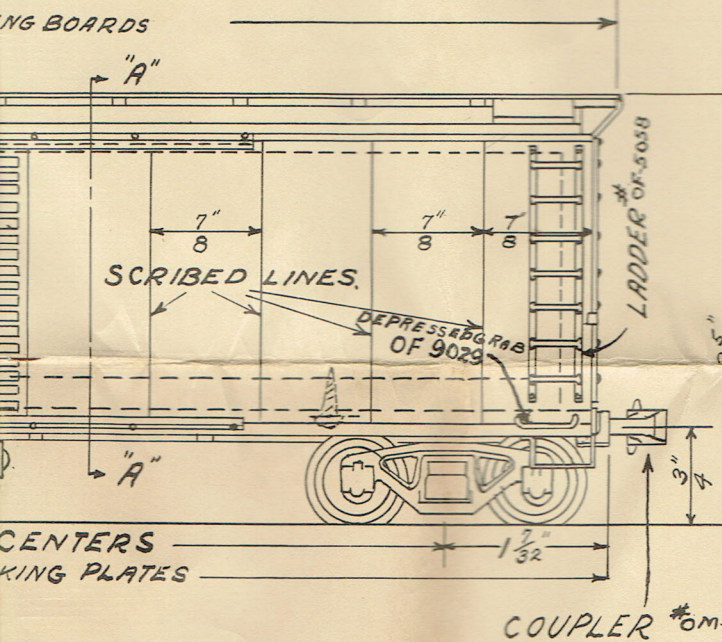
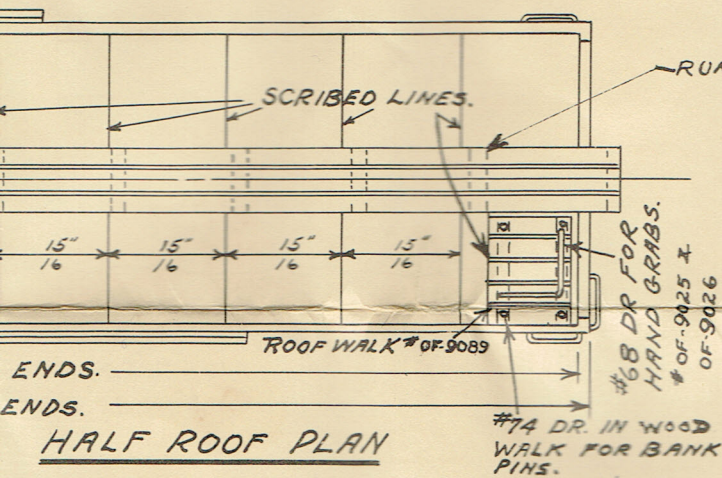
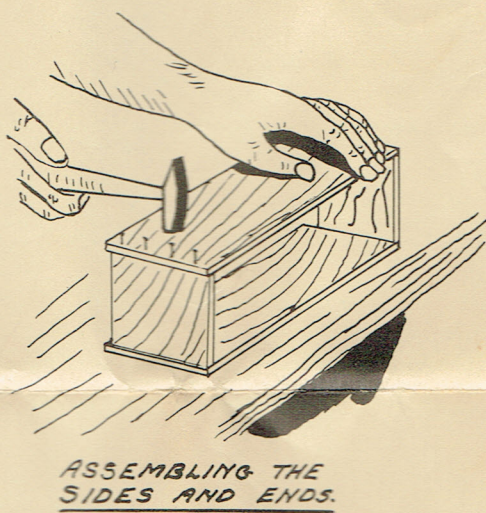
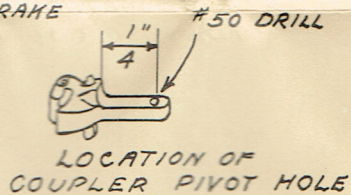
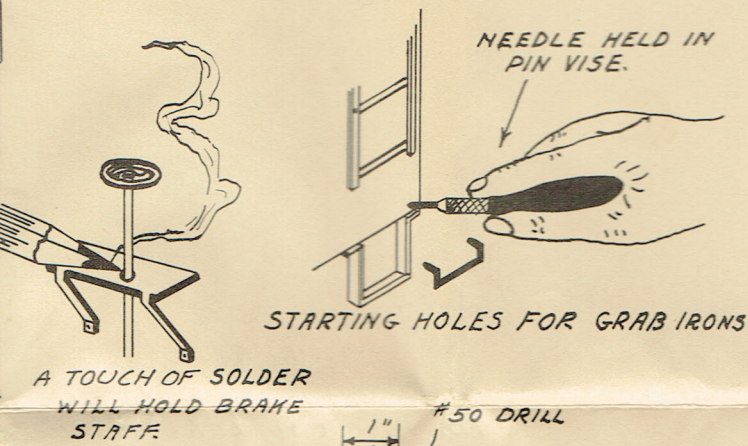
PLATFORM #OF-5098
ROUTING BOARD TO BE MADE FROM CALLING CARD.



END ELEVATION

POLING POCKET #OF-5101 STEP #OF-5060





SCALE CRAFT & CO.
(NOT INC.)
ROUND LAKE, ILLINOIS

"O" GA. 40'-6"
BOX CAR

DATE	REMARKS
4/23/41	RETRACTED & REVISED
3/2-50	REVISED

DR-S.B.
TR-A.C.L.
CK
DATE 4-23-41

OF-104

OLD # 1451