

VENTILATED BOX CAR

(WATERMELON CAR)

O GAUGE

Assembly Instructions

Before starting to build this car, read these Instructions carefully. This is no evening assembly, so with a little care and patience, you will have a car you can well be proud of.

Cut filler block in half and glue in top slot of end, so that you have a hole $3/8$ " square, cut and file flush with top of end, as shown on back page of instructions.

Fit ends into groove of floor using glue and 2 (two) Nails at each end. Place roof block on top of ends. Be sure that edges of roof and ends are flush. Use glue and 2 (two) nails at each end. When glued and nailed, make sure body is square. Then set aside to dry.

While roof, ends and floor are drying, remove flash from die cast parts and drill holes in end sills with a #60 drill, for mounting to body. Insert small pieces of wire into bottom of coupler pocket.

Glue scribed wood sides to body in the following order: 2" pieces at ends, then $3/32$ x $3/16$ door stops, last $1\ 3/4$ " piece. Be sure that you have the mitred edge of scribed wood at the roof. This will make a better fit for other section of roof. Use weight or clamps on scribed sides while drying. Now place filler piece in top and bottom of door opening.

Mark square holes in scribed wood end pieces just a little smaller than the end block holes. Then glue in place. When dry, file holes square and to size. Use weight on ends while drying.

Cut all ventilator parts from $3/32$ " x $1/32$ ". Fit and glue in place, (as shown on plan) one at a time to insure a neat job. Use glue sparingly.

Glue wood roof slats ($1/16$ x $1\ 1/4$ x $9\ 5/8$) to roof. Make sure that an equal proportion overhangs at both ends and the same at both sides. (Roof slats are cut on a mitre for a good fit at the peak of the roof.) Place weight on roof until glue has set.

Mount body bolsters, (using wood screws supplied) center sill and crossbeams (wood channel) in place as shown in drawing.

Cut 32 pieces of $3/32$ " x $1/32$ " x $1\ 1/4$ " long for roof battens and glue in place. (See Drawing.)

Cut roof walk parts and end platform parts to size. Make 13 pieces $15/32$ " long from $1/32$ x $3/32$ strip for roof walk support. Glue to roof as shown in drawing. Form end walk grabs using .032 wire.

Cut fascia board from $3/32$ " x $1/32$ ". Glue in place as shown in drawing.

Mount ladders, end sills and grab irons as per drawing.

13. Make up two (2) screen doors and two (2) closed panel doors using same. Making screen doors clamp the four pieces of one door together and drill with a #66 drill. Then glue together as shown in drawing, leaving the bottom pieces off until the wire has been inserted. After wire has been placed, glue other two (2) pieces to door and let dry.

14. Cut Z Door slide to fit between door stops, then fit a length of $3/32$ " x and glue where bottom door slide is to be. Pin on upper slide. When done make sure door slides freely. If it doesn't, file last pieces of wood to fit.

15. Assemble AB Brake set as shown in drawing and pin on roof walk supports, platform. Assemble wire (.032) for brake wheel. Pin on car steps. Mount at this time. For tin plate, remove coupler pocket to allow coupler to pass.

16. Paint body Box Car Red. Under body dull black. Be sure to paint all door and two bottom door slides Box Car Red.

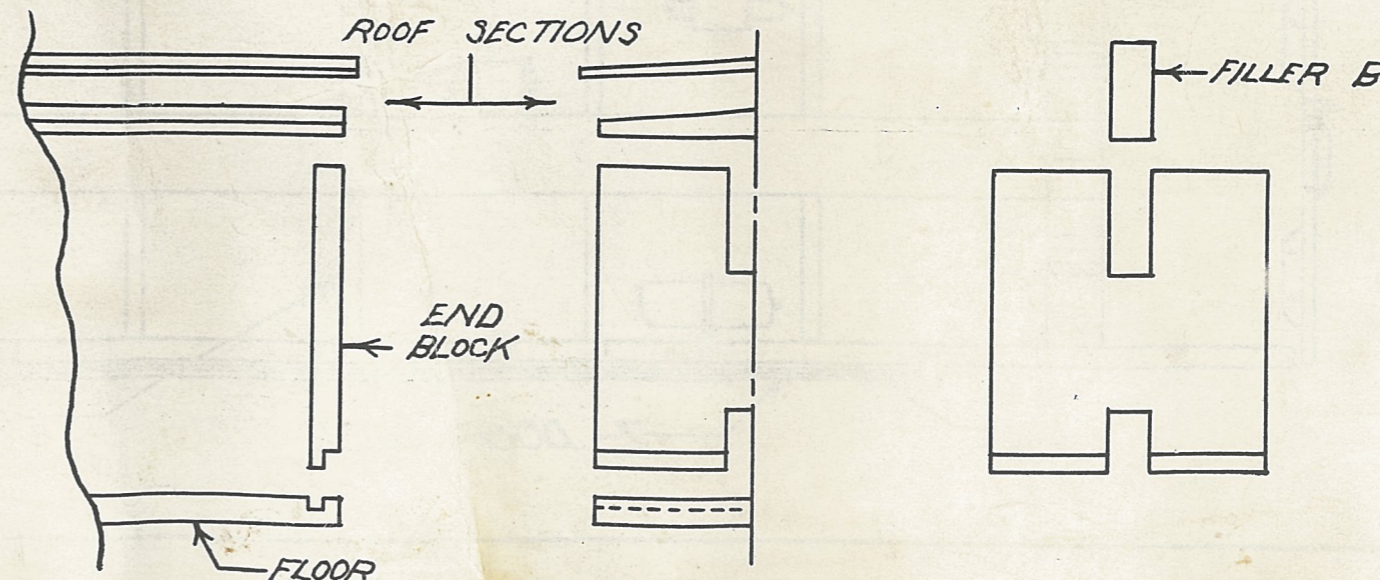
17. When paint is dry assemble doors and bottom slides. Touch up pins. Assemble trucks, apply decals and your Watermelon Car is ready for a test run.

Parts list 3950 WATERMELON CAR

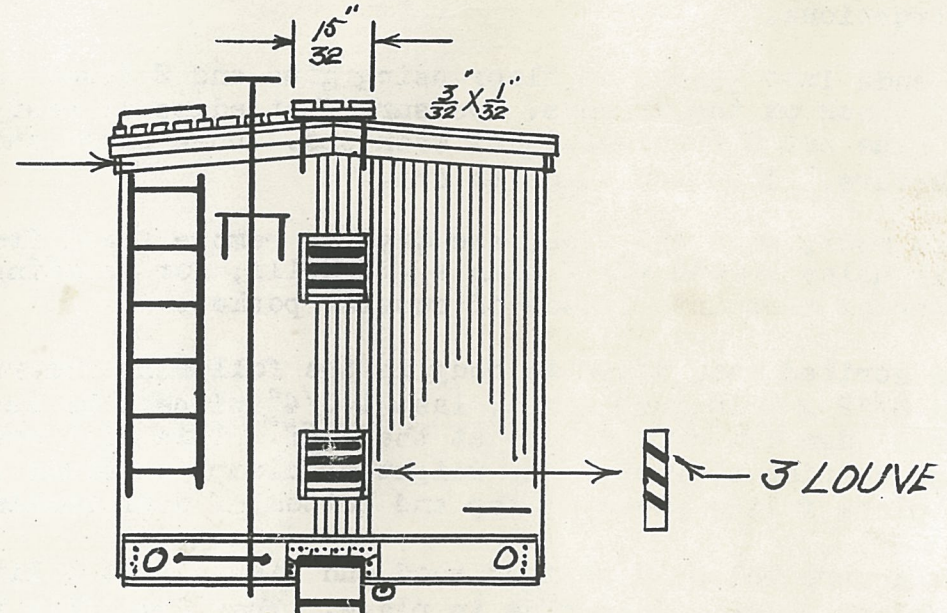
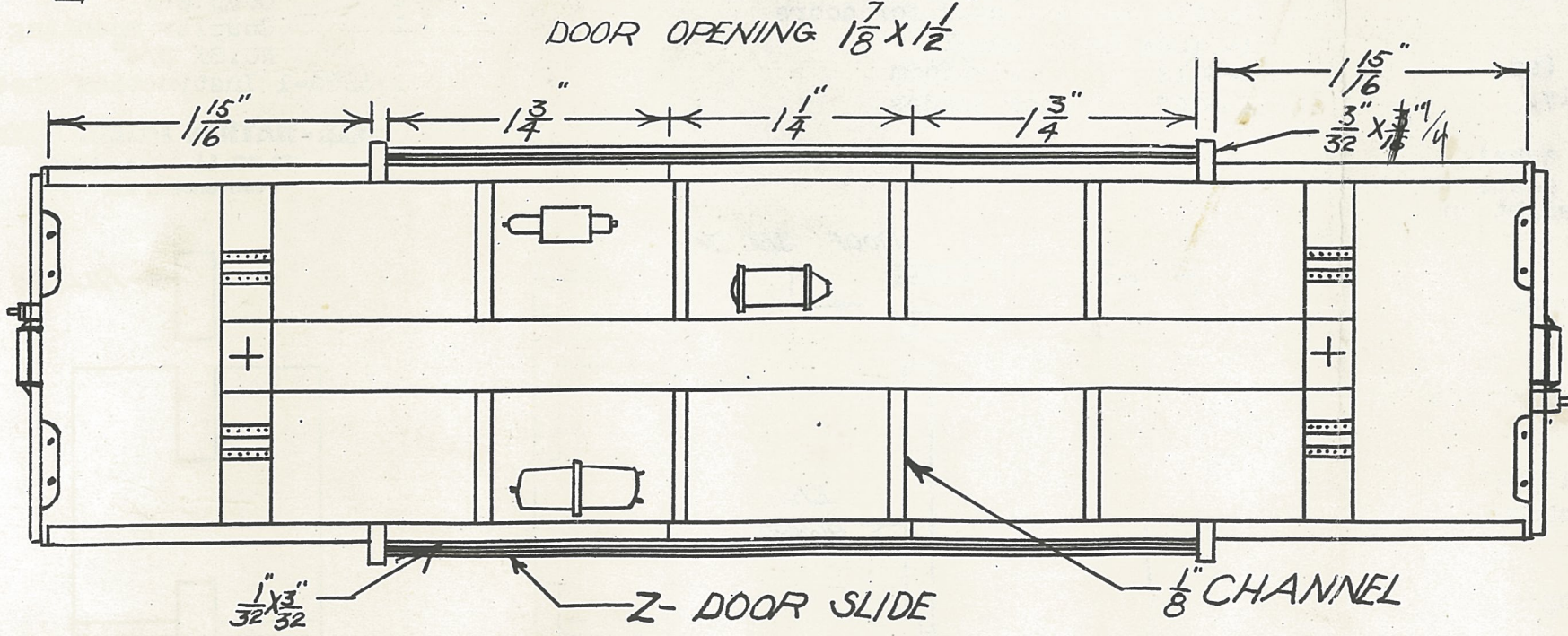
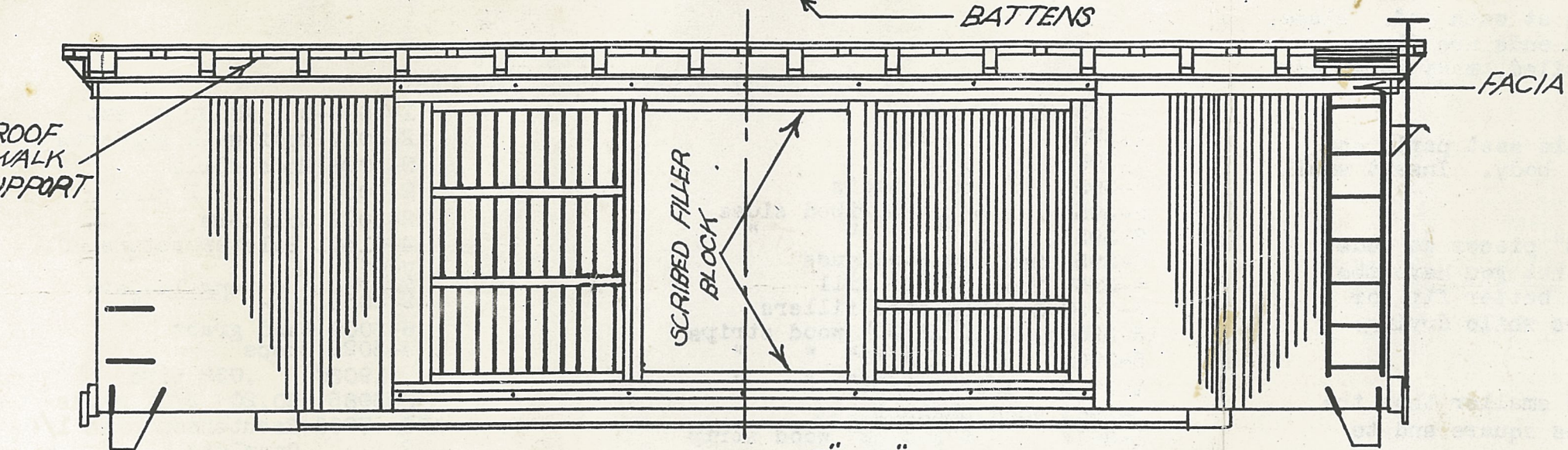
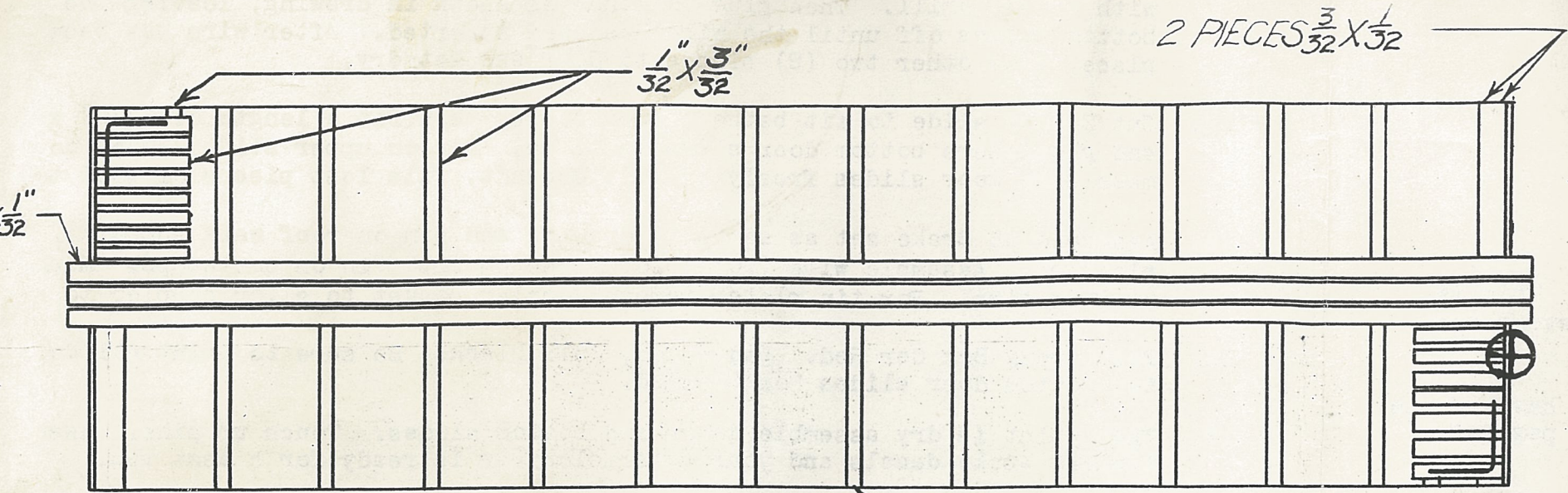
1-3950	Wood roof	1-1698-B	AB Brake set
1-3951	" floor	2-3014	Roof walk supports
2-3952	" ends	2-3026	Ends sills
2-3953	" roof slats	2-3050	" sill pins
2-3954	1 $5/16$ " Scribed sides	2-3027	Bolsters
2-3955	1 $3/4$ " " "	4-C1401	Bolster screws NO. 4
2-3956	Scribed wood ends	wood	
1-3957	Wood center sill	2-3030	6 rung ladders
4-3958	Scribed door fillers	2-3031	7 " "
13-3960	$3/32$ " x $1/32$ " wood strips	6-3009	Hand grabs
5-3961	$3/32$ " x $1/16$ " " "	4-3022	Steps
1-3962	$1/16$ " x $1/32$ " " "	1903C	.032 Wire
1-3963	Wood channel	8-3965	NO.20 $3/8$ " nails
1-3964	$3/16$ " x $3/32$ " wood strip	100-	3966 Escutcheon pins $1/4$ "
2-3959	Scribed wood for doors	2	Couplers
1-3125A	Brake wheel	2	Coupler mounting plate
1-3012	" platform		NO.8X $3/4$ "
4-3067	Z door slides	1-3950-1	Instruction sheet

ALL-NATION HOBBY SHOP

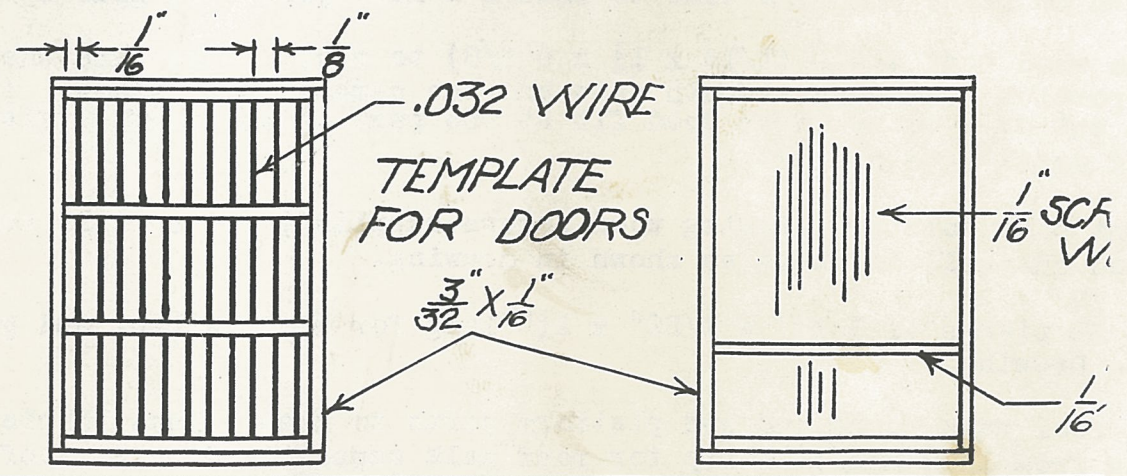
182 NO. LA SALLE STREET
CHICAGO 1, ILL.



VENTILATED BOX CAR
 (WATERMELON CAR)
 O GAUGE
 Designed and Made for
All-Nation Hobby Shop
 By Zimmer Scale Models



ALL DRAWINGS FULL SIZE FOR 1/4" (O GAUGE)



ALL-NATION HOBBY SHOP
 Specialists in Model Railroads — Scale & Tinplate
 182 No. LaSalle Street • DE. 2-0850 • Chicago 1, Illinois