

Instructions for 50'D&R.G.W. 10' & 12' Door
Kit Nos. 7510 and 7520

1. Sand roof to a smooth finish and prime with a good Lacquer base wood filler. Let dry for about 1/2 hour.
2. Nail and glue wood roof, floor and end blocks together, but be sure that end blocks are in the right position. The side that is not milled is the bottom. The top is milled and should be on the outside at roof. End should be assembled so that milled part fits with milled part on roof to form a recess. Make certain that body is square.
3. Cut out door opening in both sides, file square. Glue and pin sides in place to fit in between milled parts of both ends. Sides will have to be cut in length from both ends. When glue is dry, sand roof to a very smooth finish. Rubbing roof vigorously with a cloth will put a polish on roof, making the painted roof appear to be metal.
4. Cut four (4) small lengths of Z braces to same height as metal ends. Place ends on car and slide Z braces with wide part under end (see drawing), mark holes and drill #68 holes. Pin to car. The end eave is first cut to same contour as roof and then cut to proper width and pinned to body.
5. Pin metal roof ribs #3155 to roof as shown.
6. Glue wood angle on milled fishbelly center sill and glue to floor. Fasten metal bolsters #3027 to floor with wood screws (Flat Head). Make cross members from wood channel and glue to floor as shown. The four remaining cross members are made from 1/32" x 1/4" strip wood cut at an angle and glued in place.
7. Pin coupler pockets #3025 in place. Mark and drill all parts such as end ladders #3031, brake platform #3012, Ajax brake housing #3125H, brake wheel #3125A, roof walk supports #3014 and end placard boards which are made from flat wire and 1/8" x 1/32" strip wood as shown. All holes are drilled with a #70 drill including hand grab (#3009) holes.
8. Make roof walk from 1/8" x 1/32" strip wood and glue cross pieces 1/16" x 1/32" to line up with roof ribs. Glue onto roof. Pin on end walk platforms (castings). Drill #70 holes for roof hand grabs and attach.
9. Pin long Z braces #7521 at roof eaves as shown.
10. Before pinning door slides in place, glue a strip of 1/16" x 1/32" under door slides and drill thru strip wood to avoid splitting.
11. Cut strips from flat wire and drill with #72 drill. Pin on white lines on car sides as per drawing.
12. Pin on ladders #3031, car steps #3022 and hand grabs #3009 as per drawing.
13. Cut doors from scribed wood marked "doors" to proper width and height. Make sure that doors are high enough to fit in between door slides without falling out. Cut 1/16" x 1/32" strip wood and glue around doors as shown. There is no need to remove doors. That way strips will be in proper places. Bend door stops from flat wire, drill and pin to car sides.
14. Glue on three piece AB brake set as shown. Drawing shows brake rigging for those who wish more detail. Screw couplers in place. Paint rest of car Tucson Red. Matching paint is All-Nation's Tucson Red. Assemble trucks to car body and your car will be ready for a test run.

Instructions For
40 Ft. Double Sheathed Auto Car

Kit #S-7701 and Kit #D. & R.G.W. 7702

Because of the similarity of construction between the single door and double door (Auto car), we are supplying the single door drawings with a supplementary drawing for the auto car.

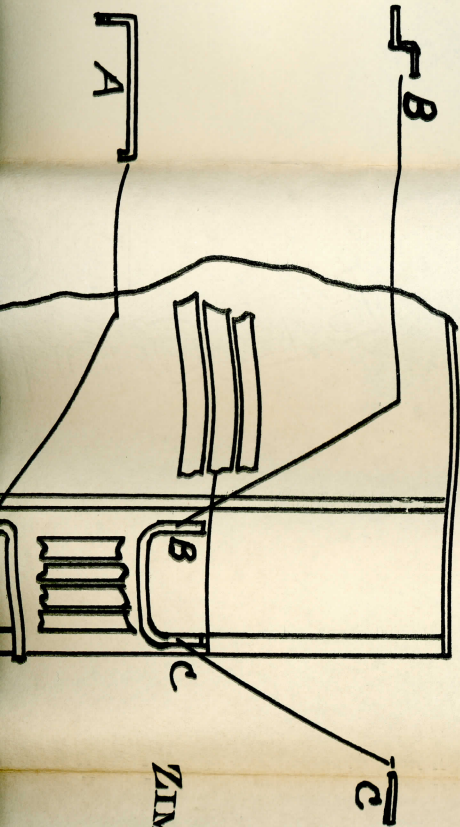
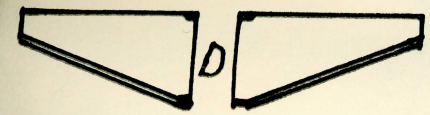
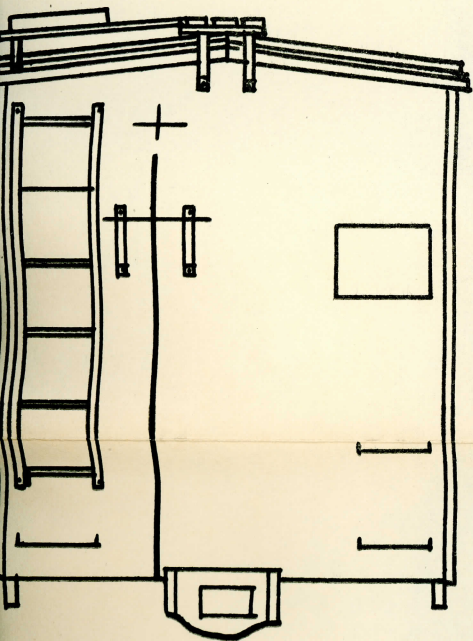
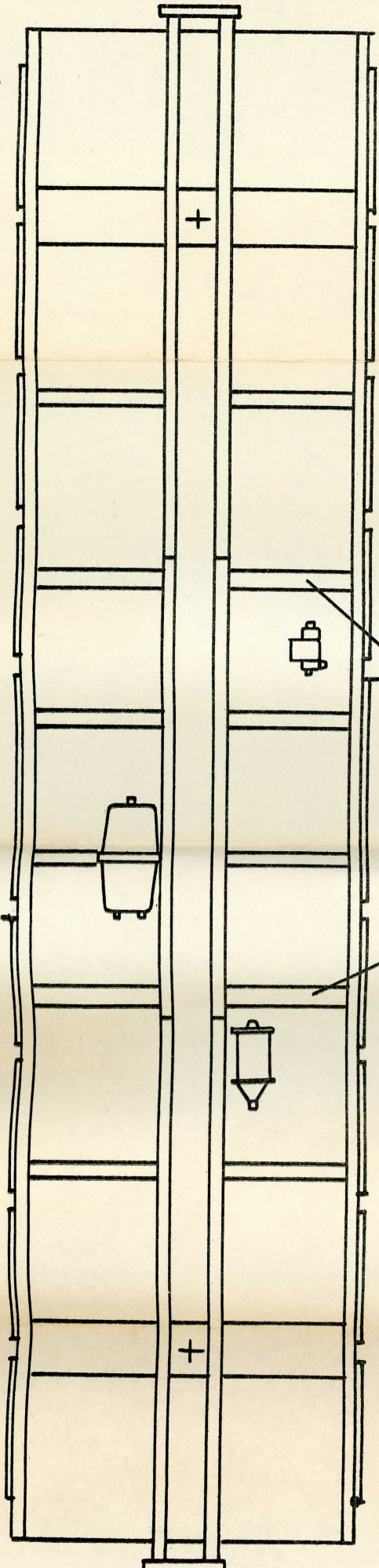
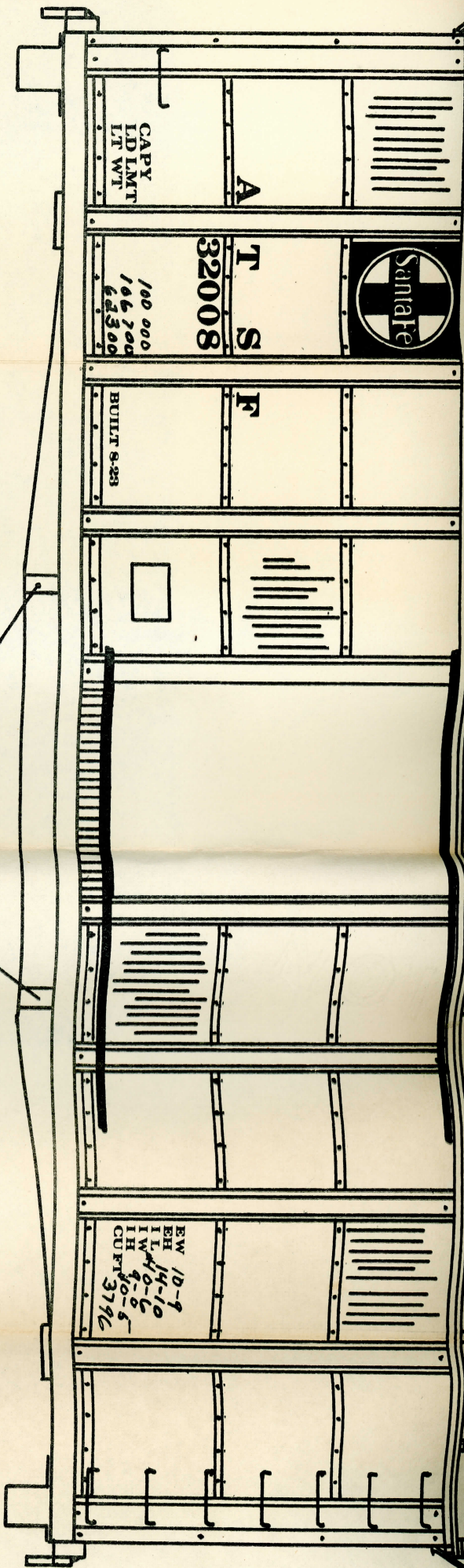
Please read instructions carefully before starting to build this car. With a little patience and care, you will be rewarded with a very nice car that you can well be proud of.

1. Assemble roof, two end blocks and floor, using glue and No. 20 3/8" nails. Check to see if assembly is square, before setting aside to dry.
2. File all die castings free of flash and bend hand grabs as shown on drawing.
3. Now we are ready for the roof ribs. Find center of car roof and draw a line down the entire length of car. Measure 9/16" from both ends of car roof, dividing the space between measurements into 13 equal spaces. A pair of stepping dividers or ruler will do. Mark the spaces on the line that was made down the center of roof, then gently form rib to contour of roof and bend over end around edge of roof. (Disregard holes already punched at either end of rib.) With long nose pliers and using small steel nails, force nail thru roof rib as shown in drawing. Repeat this until all thirteen ribs are in place. CAUTION - Be sure ribs are straight.
4. Door Opening. Measure 2-3/4" from left side of both car sides and draw line in pencil. (Very lightly.) Then from that first line, measure 3" and draw a line. This is the width of the double door opening. Now measure 1/4" from bottom of both sides and draw a line between the two lines made previously. Measure 5/32" from the top edge of both car sides and draw a line between the first two lines. Cut out opening and file smooth. Glue side in place.
5. Attach metal ends to car body with escutcheon pins and drill holes for hardware with a #72 drill.
6. Make 4 (four) wood doors from Scribed wood marked "Doors" using the template on the large drawing. Be sure to make two (2) left hand and two (2) right hand doors.
7. Prepaint two (2) ladders, four (4) door slides and the four(4) doors. Assemble to car when dry.
8. Screw bolsters to floor and glue center sill in place. Use cross braces made up of wood strips. (See drawing for wood sizes and construction). Make up the four cross braces (4 center ones) as shown in drawing marked SECTION AA. Remainder of cross braces are made from 1/8" wood channel as shown.
9. Make up roof walk (see drawing) marked Peak Roof construction from 1/8" x 1/32" strip wood and 1/16" x 1/32" strip wood and glue in place.
10. Attach all hardware, such as roof walk supports, brake platforms, brake wheel and housing, car steps, roof end platforms, hand holds and three piece AB brake set. Couplers are attached with R.H. wood screws. See drawings.
11. Now for painting. The matching paint is All-Nation's Super Railroad Lacquer TUSCAN RED. Mask off both entire sides before spraying. Spray and when dry remove masking and finish painting parts on side, (hand grabs, door stops, etc.) with small brush.

Instructions for
Flat Car #7575-F

1. File all castings free of flashing.
2. Drill holes in mounting lugs with #36 drill and use 1/16" drill for holes to mount steps. Drill holes (use #60 drill) in mounting lugs of end sills.
3. Mount stake pockets to car sides with steel escutcheon pins. Place pin thru hole in stake pocket and car side. Glue on vise or some metal object and rivet stake pocket onto car side. Repeat this until all stake pockets are in place. Excess portion of pins are then filed flush with back of car side so as not to interfere with wood deck.
4. Drill holes for hand grabs in car sides and end sills with a #68 drill.
5. Insert car steps in holes drilled previously and bend. (See drawing in lower right hand corner.) Screw car sides to wood deck with #2- $\frac{1}{4}$ " R. H. wood screws. Mount end sills with escutcheon pins.
6. Place center sill in slots of bolsters with flanges to the outside. Screw to deck with #2 F.H. wood screws. Solder metal pieces at ends of center sill and drill holes for self tapping screws to mount couplers. Cut wood channel for cross braces as shown in drawing. Glue to wood deck.
7. Mount hand grabs, three (3) pieces AB brake set, brake staff and brake wheel. Place pins in coupler pockets as shown.
8. Bend car steps slightly outward. Car is now ready for painting.

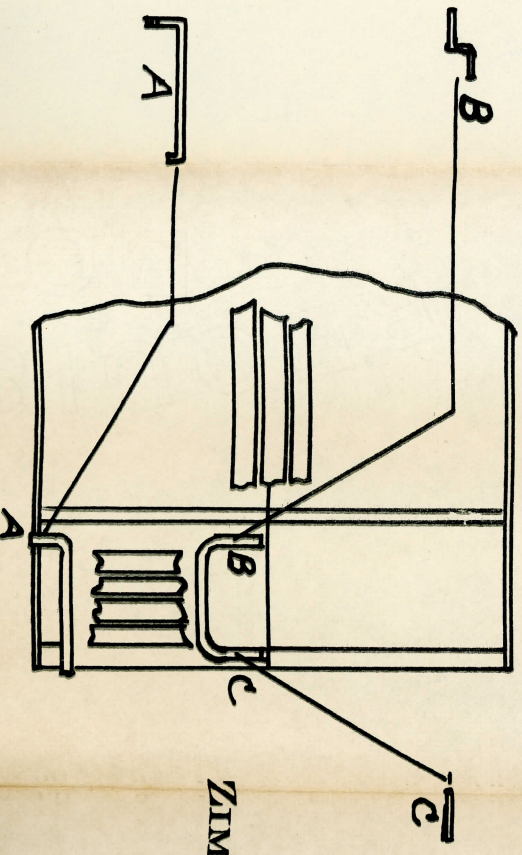
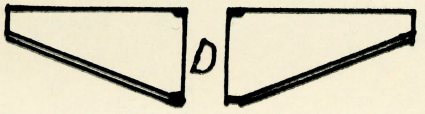
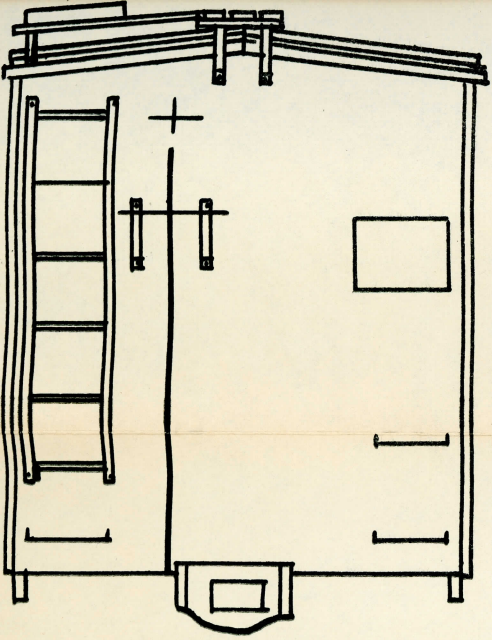
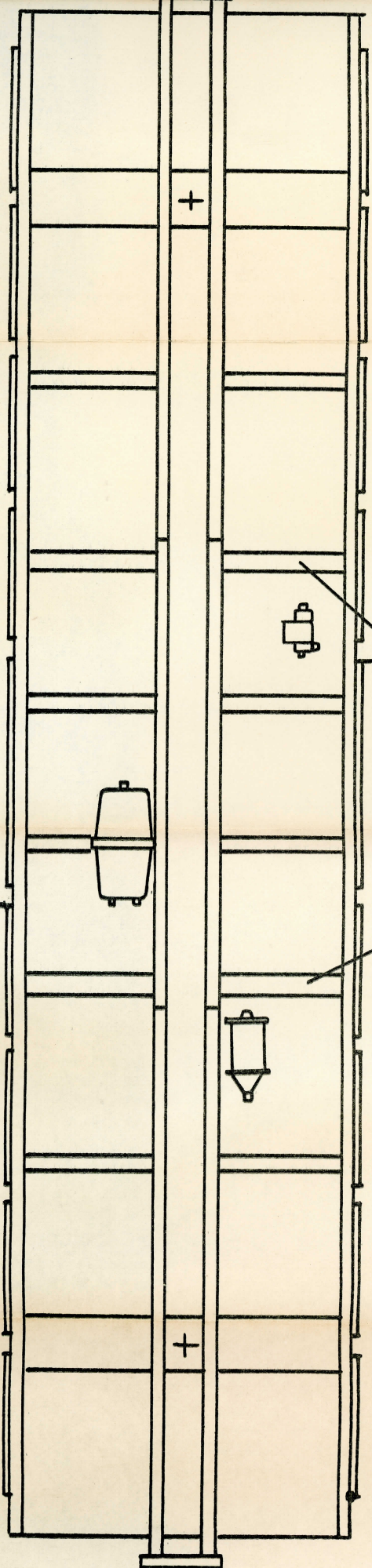
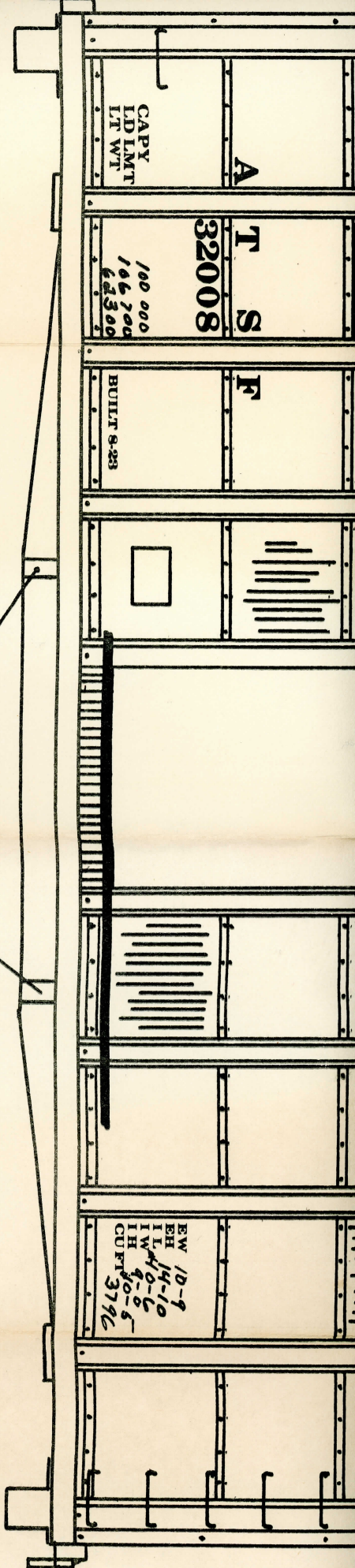
This type of car was used by many roads, such as - B & O, P.P.R.,
Milw., N.W., G.N., N.P., Southern, etc.



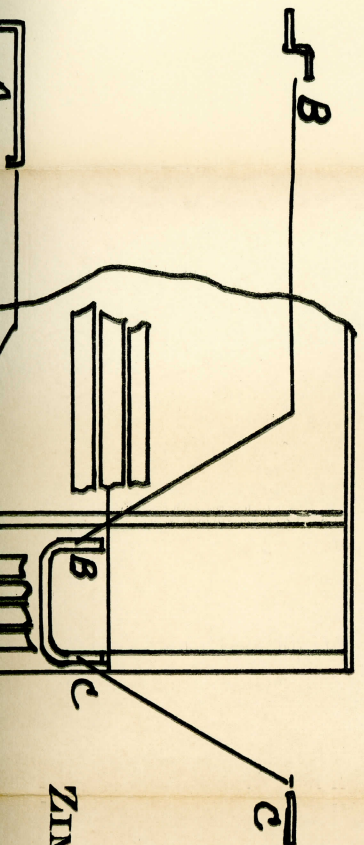
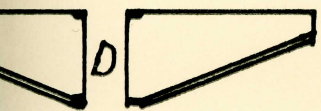
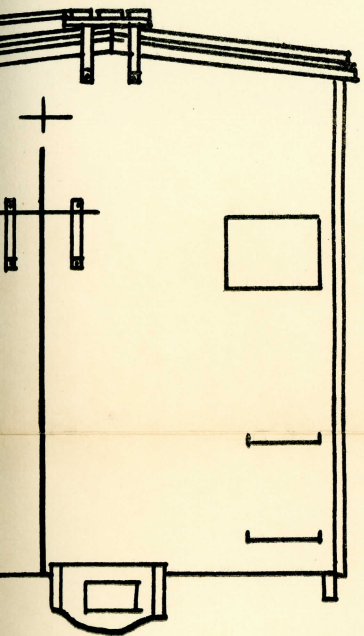
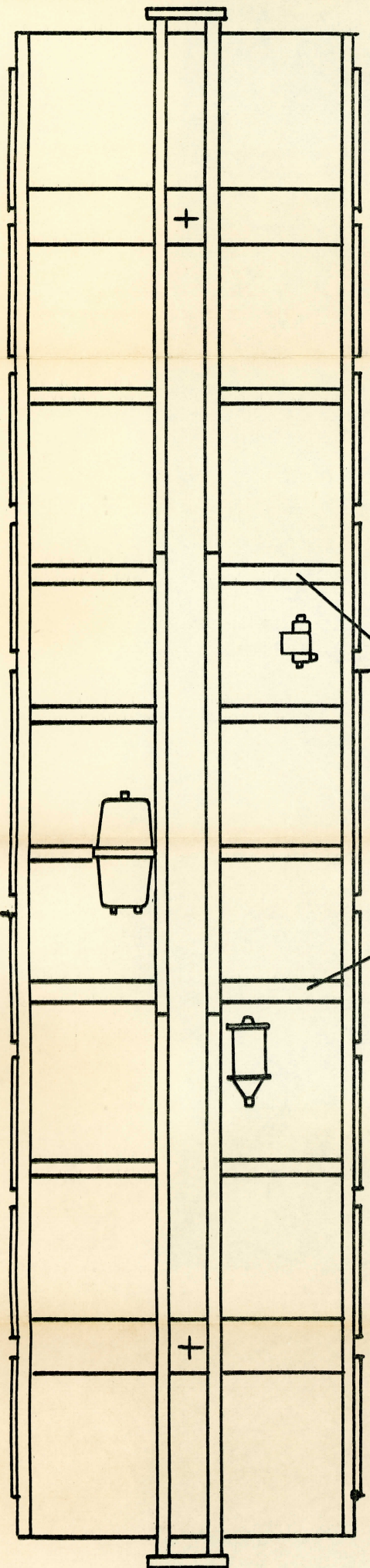
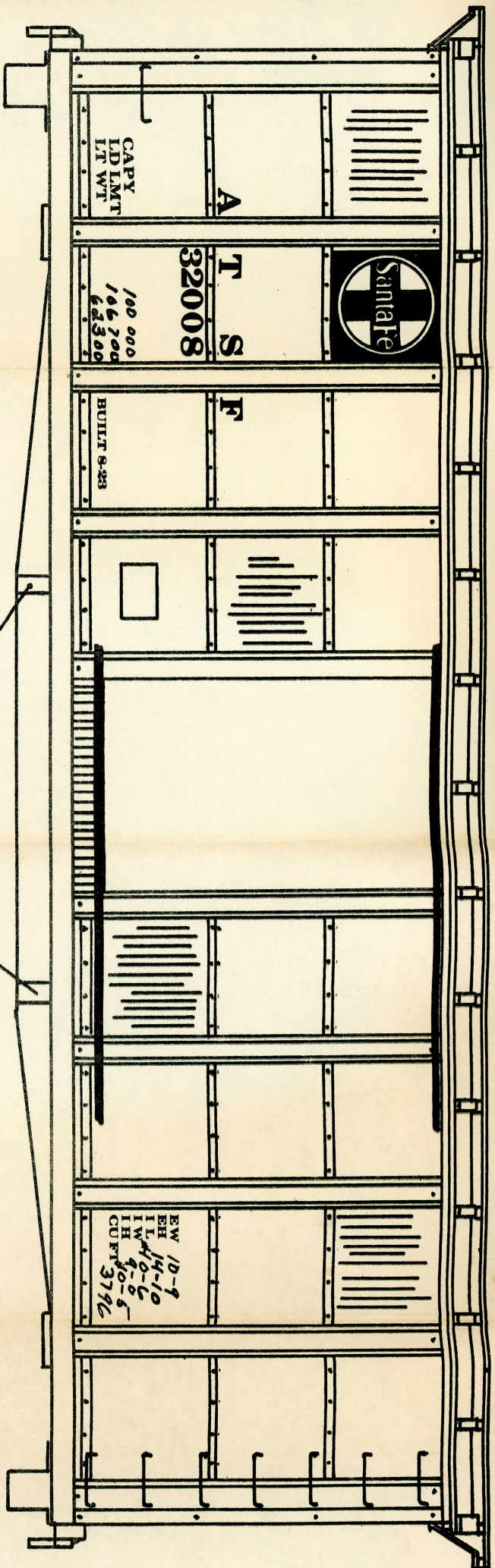
ZIMMER SCALE MODELS

4321 NORTH MASON AVE.

CHICAGO 34, ILL.



ZIMMER SCALE MODELS
 4321 NORTH MASON AVE.
 CHICAGO 34, ILL.



ZIMMER SCALE MODD

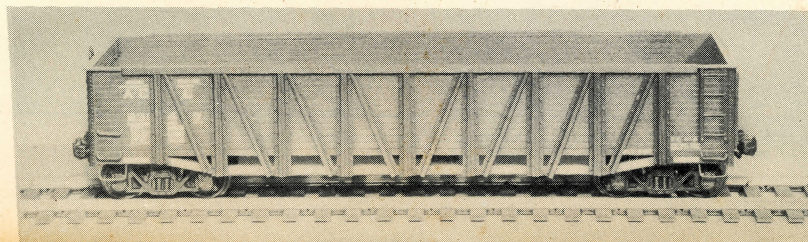
4321 NORTH MASON AVE.

Assembly Instructions

Solid Bottom Composite Gondola

40 Ft. 6 in. - A. C. L. Prototype

0 Gauge - Scale or Tinsplate



Before starting to build this car, read these instructions carefully. This is not a one evening assembly, so with a little care and patience, you will have a car that is well built and can well be proud of.

1. Glue both ends (Part #7102) to floor (Part #7104) so that the underside of floor and bottom edge of ends are flush. Now glue sides (Part #7103) in place as was done with ends. Put glued wood body assembly aside and let dry.
2. Mark holes for Ladder (Part #7109) Hand grabs (Part #3009) Brake platform (Part #3012) Ajax brake housing (Part #3125H) and Brake wheel (Part #3125A) on one metal end (Part #7110). Mark other end for Ladder (Part #7109) and Hand grab (Part #3009). Center punch all locations and drill using a #68 drill before attaching metal ends to wood body assembly. Lay drilled ends aside until later.
3. Locate bolsters (Part #3027) using drawing for proper locations. Attach bolsters with No. 2 F.H. wood screws (Part #C1401). Cut center sill (Part #7105) to fit between bolsters and glue in place. Take remaining piece of center sill and cut two pieces to length as in drawing. Notch one end of each as shown and lay aside until later.
4. Now assemble metal ends to wood ends using glue between metal and wood ends. To hold ends firm use two rubber bands stretched tightly around body, one at upper part of body and one at lower part of body.

Pin coupler pockets (Part #3025) in place which will help hold ends while glue is drying.

5. Take the two pieces of left over center sill which have been cut and see that they fit in-between coupler pocket and bolster at each end before gluing in place.

Cut 28 pieces of 3/16" wood channel to fit flush with center sill and flush with outer edge of side and glue in place as in drawing.

Cut 1/8" x 1/8" wood angle and glue into place as shown for lower bracing.

6. Remove rubber bands and pin "Z" braces (Part #7107), (#7106) & (7108) in place as shown in drawing of side. When doing this the proper bracing should be two "Z" braces butted together with bolt or rivet impressions to the outside (on upright bracing) impressions on diagonal bracing are towards top of car as shown.

When pinning bracing, just use one pin per brace so that pin goes into side and floor. We suggest using both pins (small nails) and glue.

7. Cut 1/8" x 1/32" wood strip to length as shown in drawing and glue to top of body so that the inner edge is flush with sides and ends. Cut 1/8" x 1/8" wood angle as shown and glue in place over 1/8" x 1/32" wood strip.
8. Attach Ladders (Part #7109) to sides and ends as shown with small nails cut down so that they will not protrude on other side (cut nails about in half). Cut hand grabs (Part #3009) short and attach. Car steps are uncut hand grabs. Pin brake housing, brake wheel and brake platform in place. Attach couplers with No. 2 R.H. wood screws. Glue 3 piece brake set (Part #1698B) in place. You are now ready for painting and decals. Color of car is black.

COUPLERS - ADAPTERS

for TINPLATE OPERATION

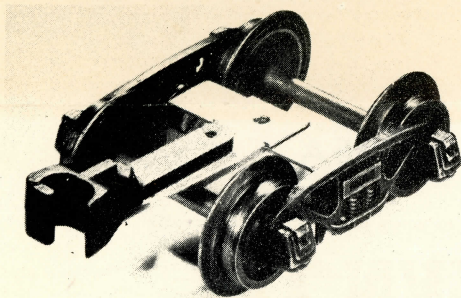


Illustration showing tinplate dummy coupler and bolster adapter mounted in position on scale truck fitted with tinplate wheels allowing operation with Lionel automatic couplers.

Another
ALL-NATION
FIRST

Recommended Matching Paints
ALL-NATION SUPER LACQUERS

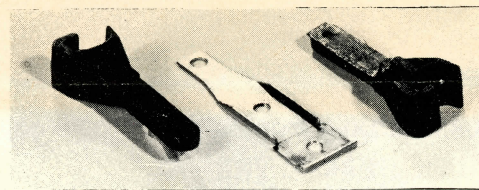


Illustration showing top and bottom of tinplate dummy coupler with bolster adapter before mounting.

BY ALL-NATION—LEADER IN O GAUGE

Solid Bottom Composite Gondola

A.C.L. Prototype 40 Ft. 6 in.

PARTS LIST

Sub. Assembly #7150

8 #7106 "Z" Braces
32 #7107 "Z" Braces
14 #7108 "Z" Braces

Sub. Assembly #7151

1 #3125A Brake wheel
1 #3125H Ajax brake housing
1 #3012 Brake platform
4 #7109 Ladders
14 #3009 Hand grabs
-2 #3025 Coupler pockets
-2 Couplers
2 #3027 Bolsters
-1 #1698B 3 piece brake set
4 No. 2 F.H. wood screws
2 No. 2 R.H. wood screws

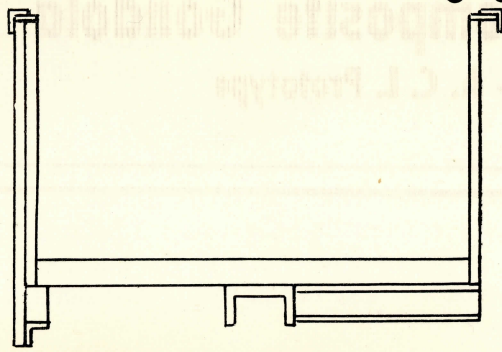
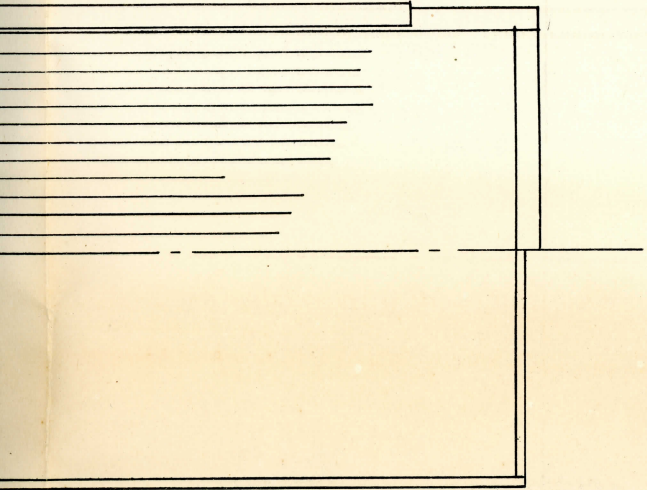
2 #7110 Metal ends
1-1 #7104 Wood floor
2-1 #7103 Wood sides
2 #7102 Wood ends
1 #7105 Wood channel center sill
3 1/8" x 1/32" Wood strip
4 1/8" x 1/8" Wood angle
2 3/16" Wood channel
1 #7101 Instruction sheet

ALL-NATION HOBBY SHOP

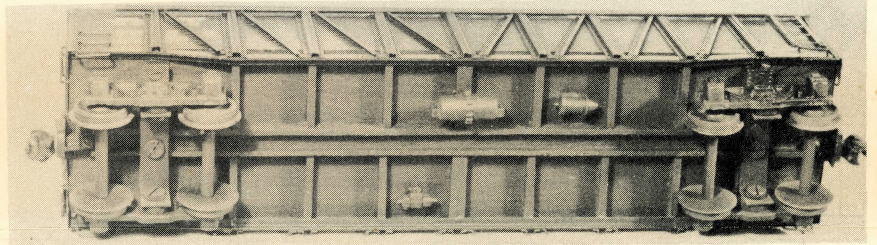
Specialists in Model Railroads — Scale & Tinplate

182 No. LaSalle Street • DE. 2-0850 • Chicago 1, Illinois

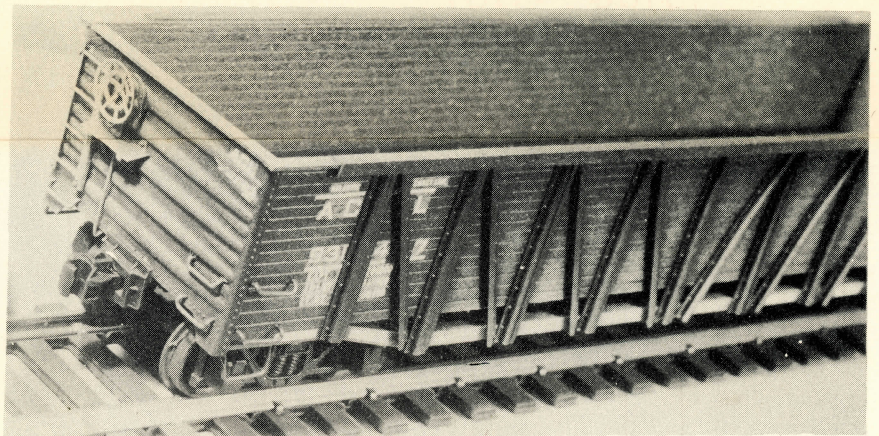
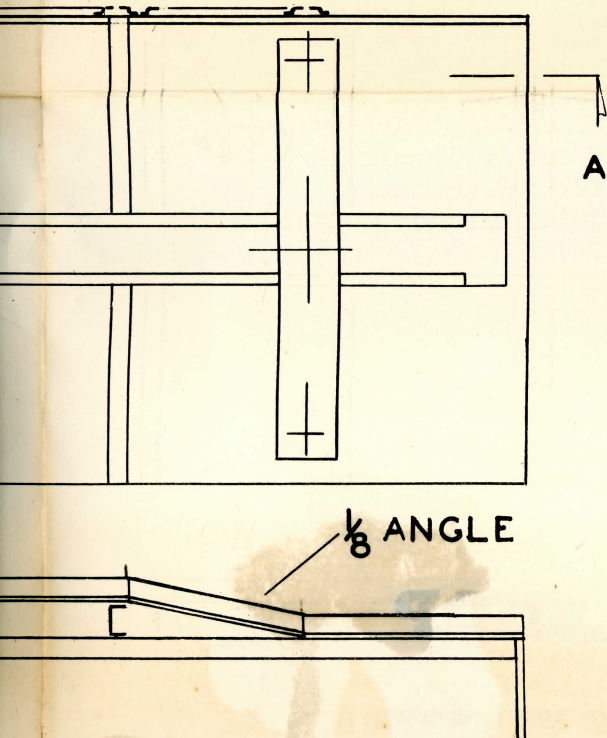
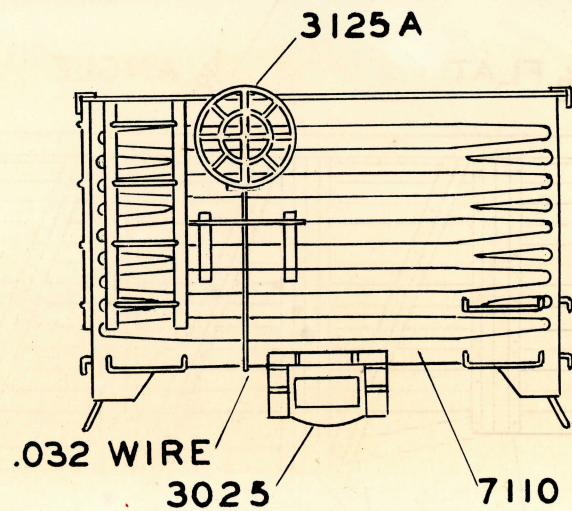
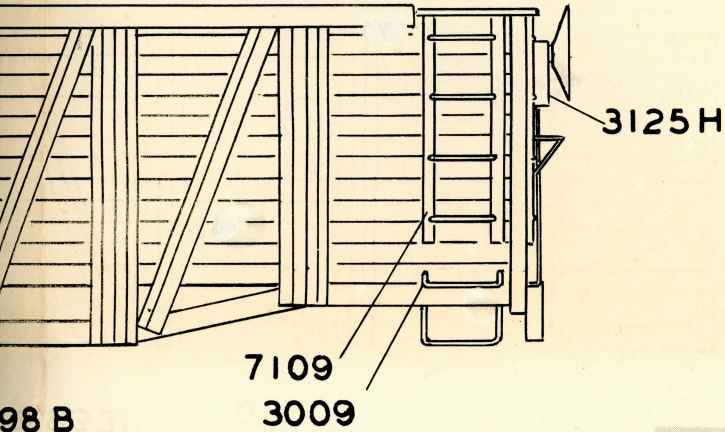
O GAUGE - BY ALL-NATION
Scale or Tinplate



SECTION AT B-B



Recommended Matching Paints
ALL-NATION SUPER LACQUERS



Solid Bottom Composite Gondola

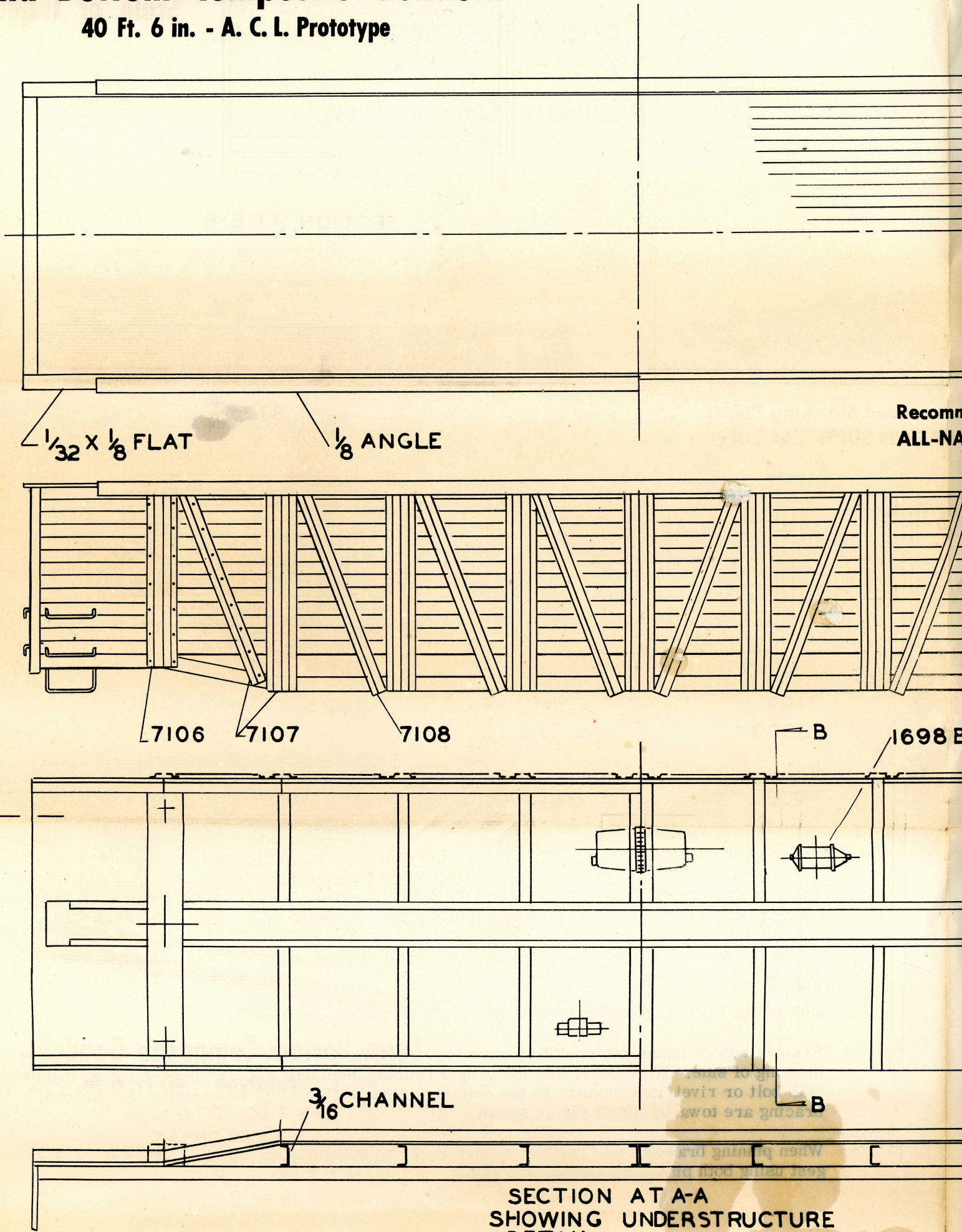
A.C.I. Prototype 40 Ft. 6 in.

Kit 7100 "O" Gauge
SCALE OR TINPLATE

Designed and Made For
ALL-NATION HOBBY SHOP
By Zimmer Scale Models
Drawing by Robert Price

Solid Bottom Composite Gondola

40 Ft. 6 in. - A. C. L. Prototype

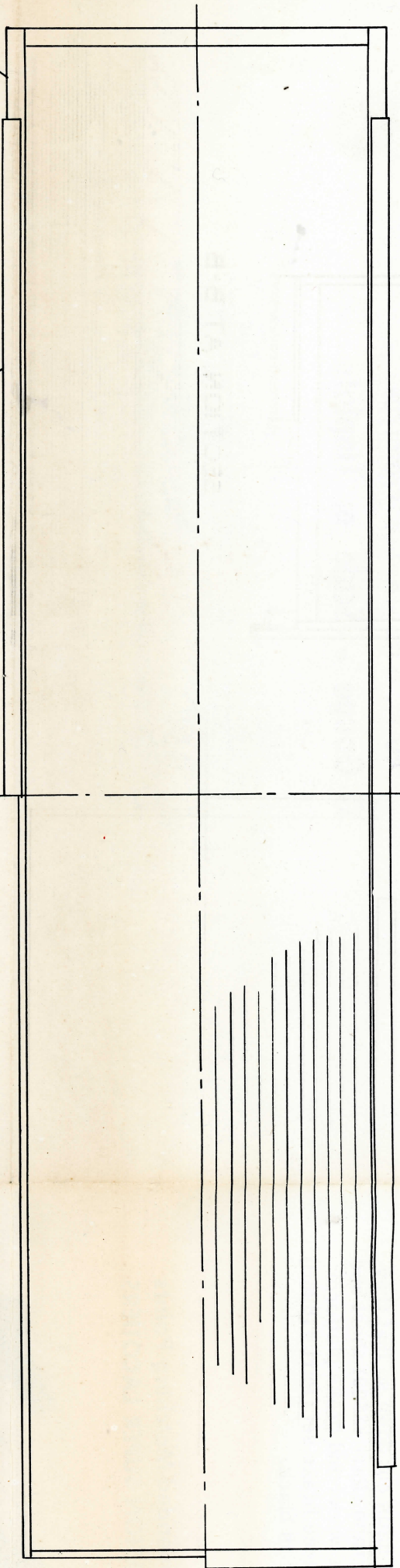


Recomm
ALL-NA

SECTION AT A-A
SHOWING UNDERSTRUCTURE
DETAIL

Solid Bottom Composite Gondola

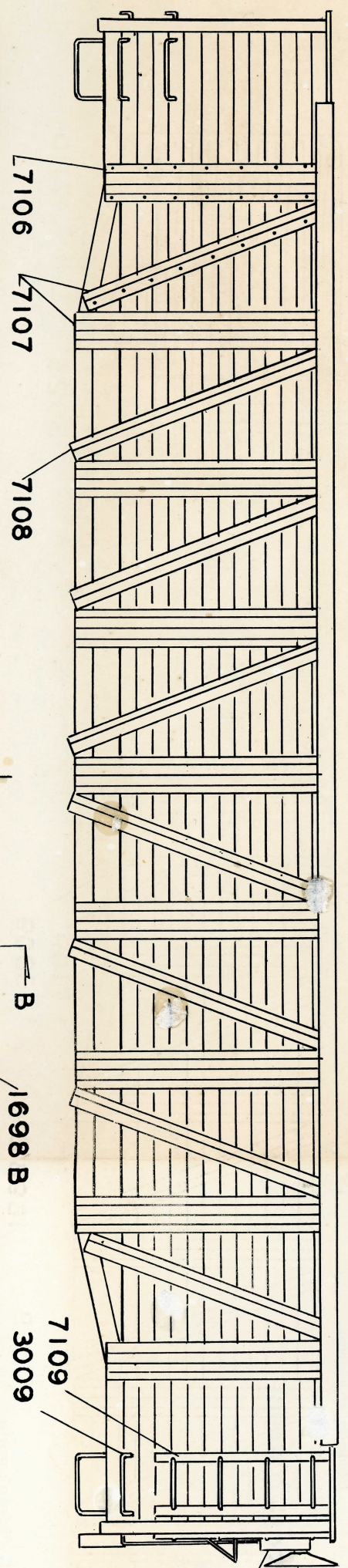
40 Ft. 6 in. - A. C. L. Prototype



1/32 X 1/8 FLAT

1/8 ANGLE

Recommended Matching Paints
ALL-NATION SUPER LACQUERS



7106

7107

7108

B

1698 B

7109
3009

312

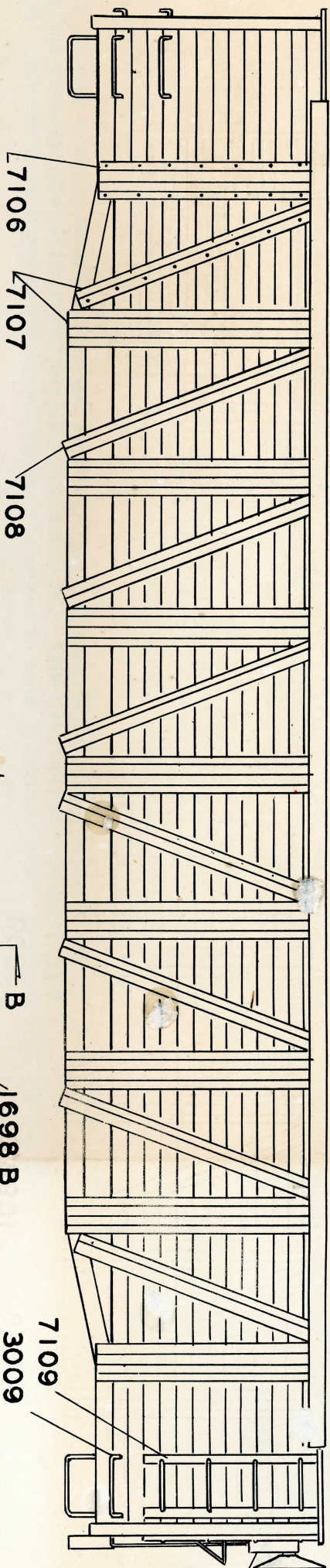
A

A

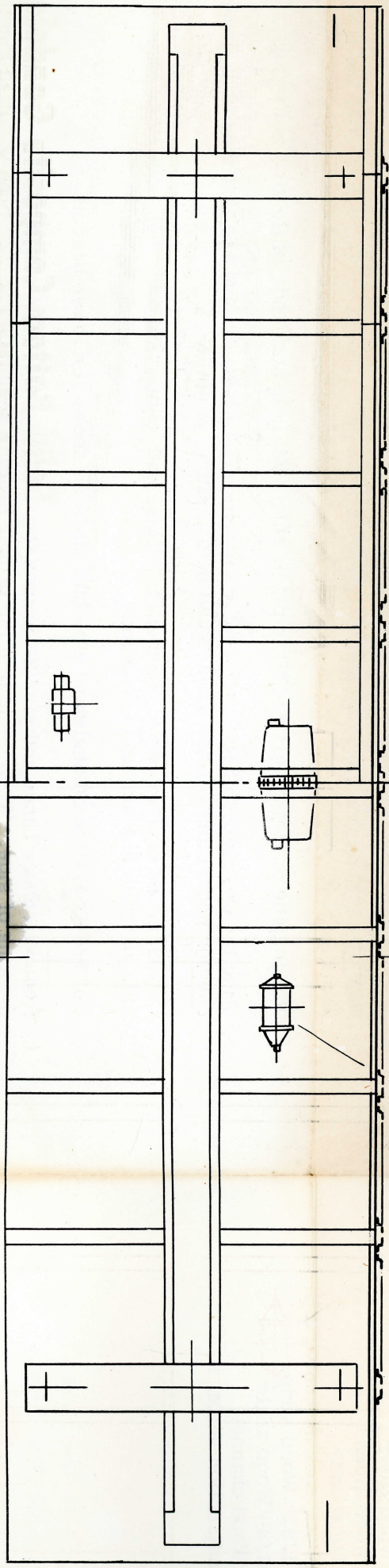
1/32 x 1/8 FLAT

1/8 ANGLE

Recommended Matching Paints
ALL-NATION SUPER LACQUERS

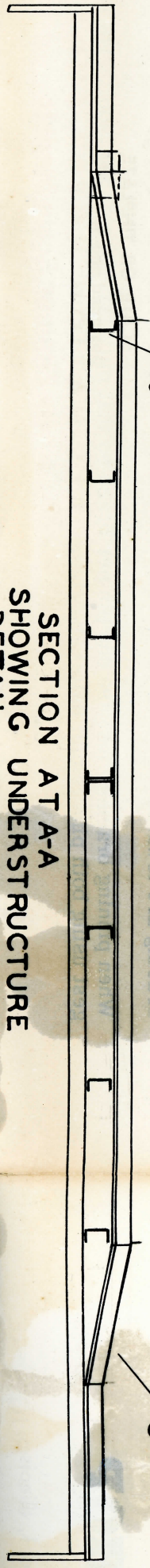


1698 B



3/16 CHANNEL

1/8 ANGLE



SECTION AT A-A
SHOWING UNDERSTRUCTURE
DETAIL



VENTILATED BOX CAR

(WATERMELON CAR)

0 GAUGE

Assembly Instructions

556
261
1

Before starting to build this car, read these Instructions carefully. This is a one evening assembly, so with a little care and patience, you will have a car that you can well be proud of.

1. Cut filler block in half and glue in top slot of end, so that you have a hole $\frac{3}{8}$ " square, cut and file flush with top of end, as shown on back page of instructions.
2. Fit ends into groove of floor using glue and 2 (two) Nails at each end. Place roof block on top of ends. Be sure that edges of roof and ends are flush. Use glue and 2 (two) nails at each end. When glued and nailed, make sure body is square. Then set aside to dry.
3. While roof, ends and floor are drying, remove flash from die cast parts and drill holes in end sills with a #60 drill, for mounting to body. Insert small pieces of wire into bottom of coupler pocket.
4. Glue scribed wood sides to body in the following order: 2" pieces at ends, then $\frac{3}{32}$ x $\frac{3}{16}$ door stops, last $1\frac{3}{4}$ " piece. Be sure that you have the mitred edge of scribed wood at the roof. This will make a better fit for other section of roof. Use weight or clamps on glued sides while drying. Now place filler piece in top and bottom of door opening.
5. Mark square holes in scribed wood end pieces just a little smaller than the end block holes. Then glue in place. When dry, file holes square and to size. Use weight on ends while drying.
6. Cut all ventilator parts from $\frac{3}{32}$ " x $\frac{1}{32}$ ". Fit and glue in place, (as shown on plan) one at a time to insure a neat job. Use glue sparingly.
7. Glue wood roof slats ($\frac{1}{16}$ x $1\frac{1}{4}$ x $9\frac{5}{8}$) to roof. Make sure that an equal proportion overhangs at both ends and the same at both sides. (Roof slats are cut on a mitre for a good fit at the peak of the roof.) Place weight on roof until glue has set.
8. Mount body bolsters, (using wood screws supplied) center sill and crossbears (wood channel) in place as shown in drawing.
9. Cut 32 pieces of $\frac{3}{32}$ " x $\frac{1}{32}$ " x $1\frac{1}{4}$ " long for roof battens and glue in place. (See Drawing.)
10. Cut roof walk parts and end platform parts to size. Make 13 pieces $15\frac{3}{32}$ " long from $\frac{1}{32}$ x $\frac{3}{32}$ strip for roof walk support. Glue to roof as shown in drawing. Form end walk grabs using .032 wire.
11. Cut fascia board from $\frac{3}{32}$ " x $\frac{1}{32}$ ". Glue in place as shown in drawing.
12. Mount ladders, end sills and grab irons as per drawing.

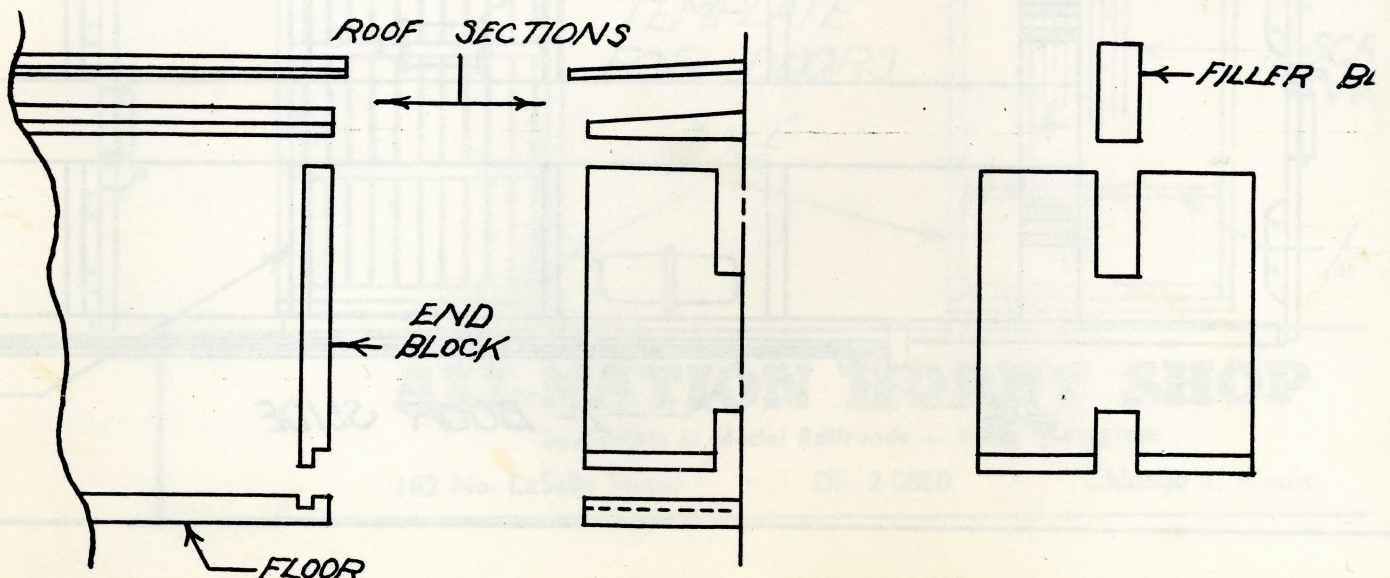
13. Make up two (2) screen doors and two (2) closed panel doors using template making screen doors clamp the four pieces of one door together and drill with a #66 drill. Then glue together as shown in drawing, leaving the bottom pieces off until the wire has been inserted. After wire has been place, glue other two (2) pieces to door and let dry.
14. Cut Z Door slide to fit between door stops, then fit a length of 3/32" x and glue where bottom door slide is to be. Pin on upper slide. When done make sure door slides freely. If it doesn't, file last pieces of wood to
15. Assemble AB Brake set as shown in drawing and pin on roof walk supports, platform. Assemble wire (.032) for brake wheel. Pin on car steps. Mount at this time. For tin plate, remove coupler pocket to allow coupler to sit
16. Paint body Box Car Red. Under body dull black. Be sure to paint all door two bottom door slides Box Car Red.
17. When paint is dry assemble doors and bottom slides. Touch up pins. Assemble trucks, apply decals and your Watermelon Car is ready for a test run.

Parts list
3950 WATERMELON CAR

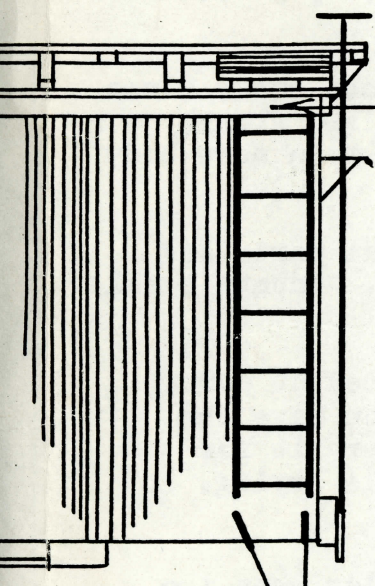
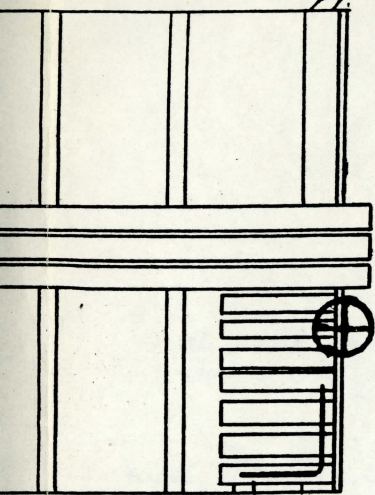
1-3950 Wood roof	1-1698-B AB Brake set
1-3951 " floor	2-3014 Roof walk supports
2-3952 " ends	2-3026 Ends sills
2-3953 " roof slats	2-3050 " sill pins
2-3954 1 5/16" Scribed sides	2-3027 Bolsters
2-3955 1 3/4" " "	4-C1401 Bolster screws NO.2 wood
2-3956 Scribed wood ends	2-3030 6 rung ladders
1-3957 Wood center sill	2-3031 7 " "
4-3958 Scribed door fillers	6-3009 Hand grabs
13-3960 3/32" X 1/32" wood strips	4-3022 Steps
5-3961 3/32" X 1/16" " "	1903C .032 Wire
1-3962 1/16" X 1/32" " "	8-3965 NO.20 3/8" nails
1-3963 Wood channel	100- 3966 Escutcheon pins 1/4
1-3964 3/16" X 3/32" wood strip	2 Couplers
2-3959 Scribed wood for doors	2 Coupler mounting pi
1-3125A Brake wheel	NO.8X 3/4"
1-3012 " platform	1-3950-1 Instruction sheet
4-3067 Z door slides	

ALL-NATION HOBBY SHOP

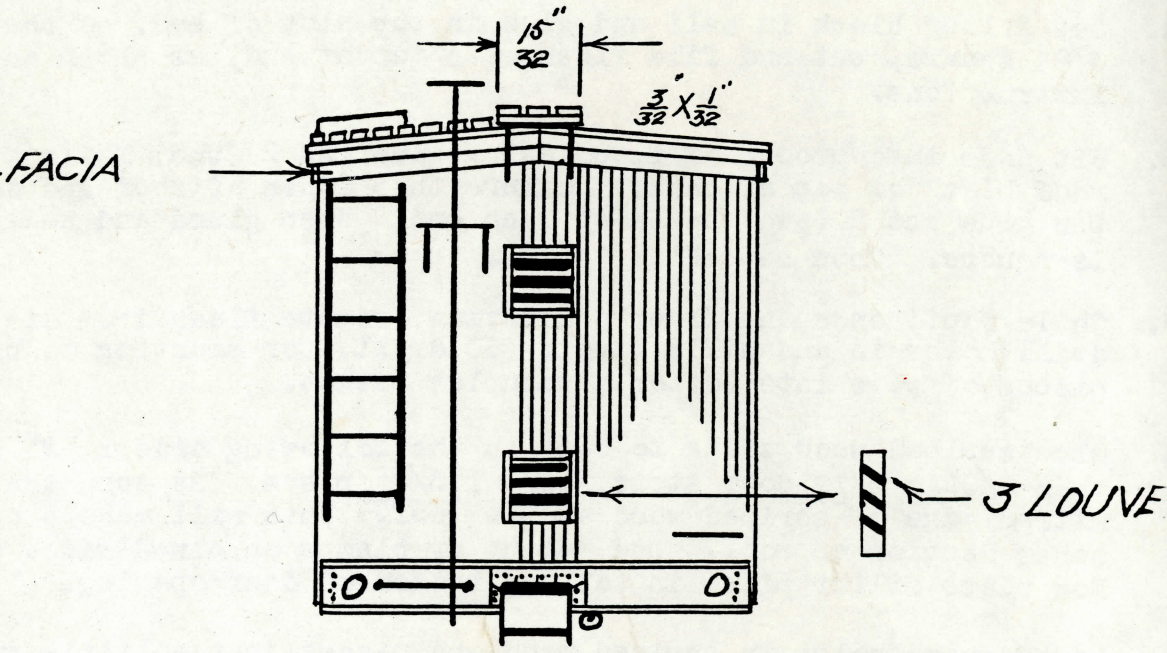
182 NO. LA SALLE STREET
CHICAGO 1, ILL.



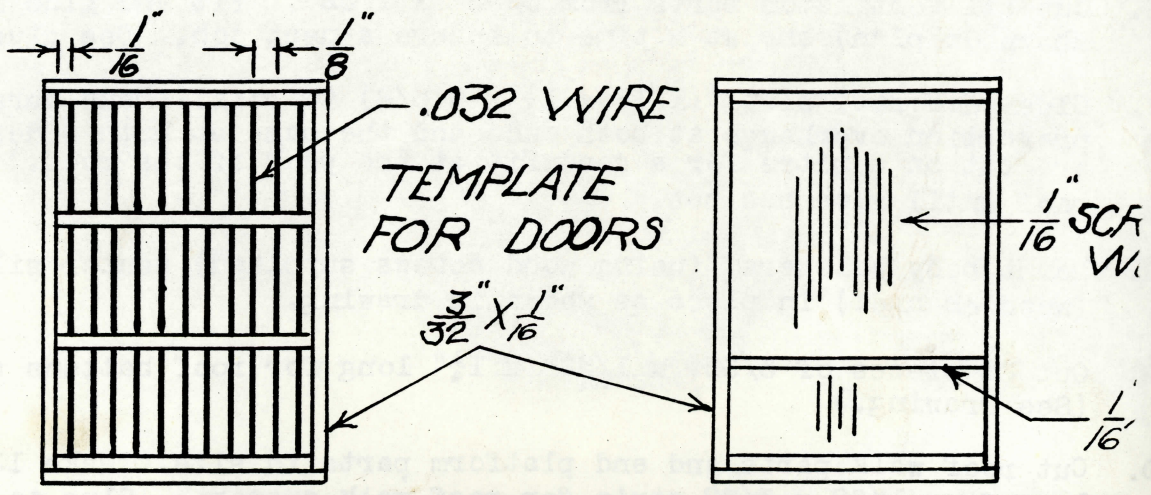
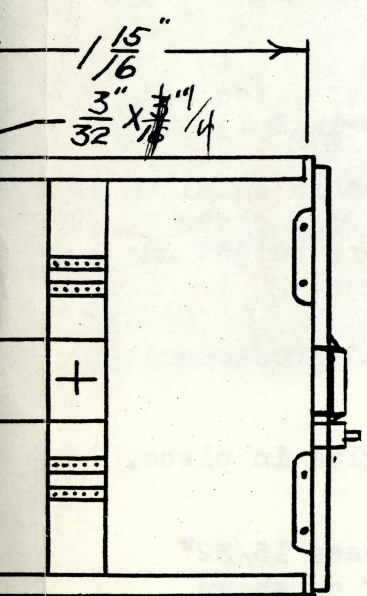
2032x32



VENTILATED. BOX CAR
 (WATERMELON CAR)
 O GAUGE
 Designed and Made for
All-Nation Hobby Shop
 By Zimmer Scale Models

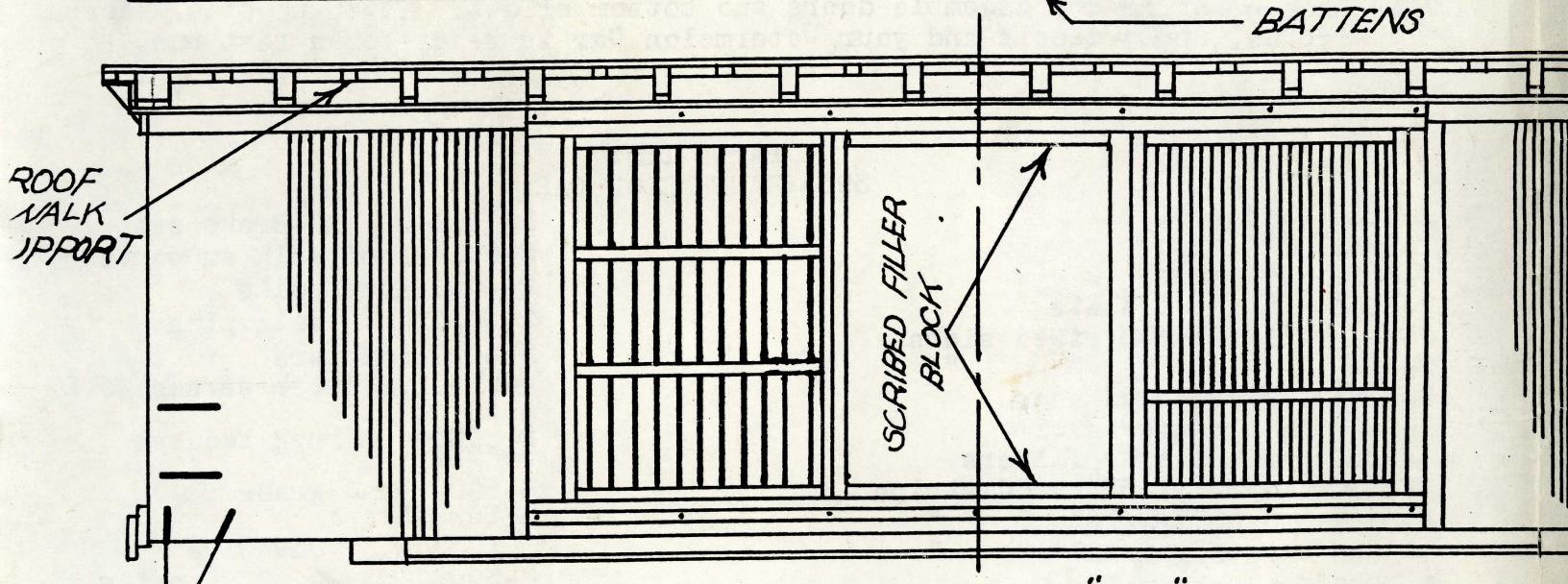
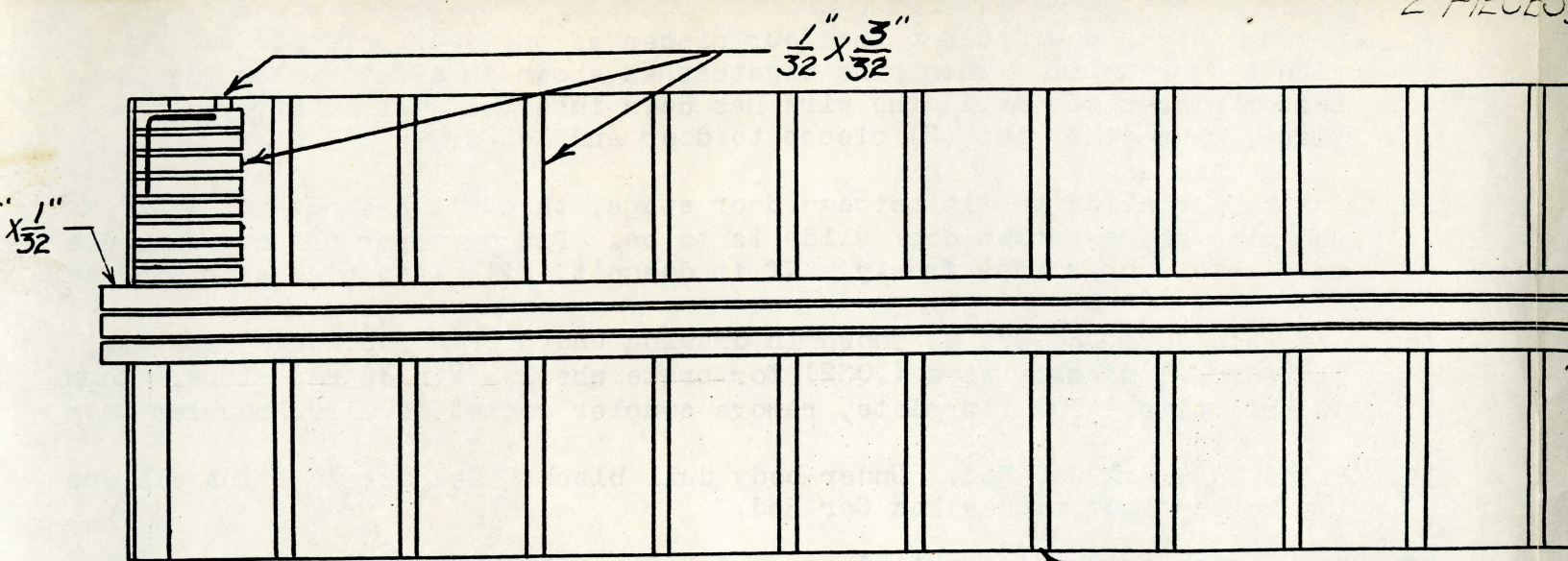


ALL DRAWINGS FULL SIZE FOR 1/4" (O GAUGE)

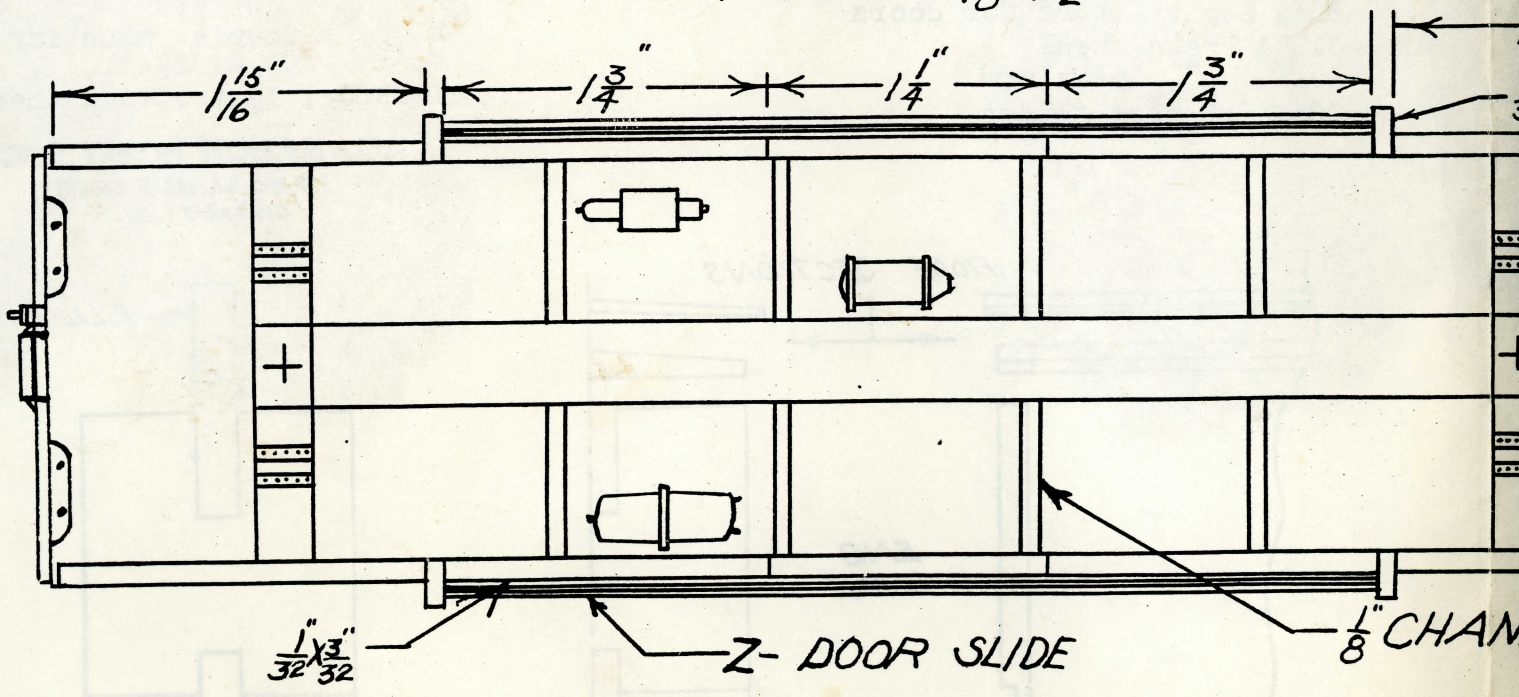


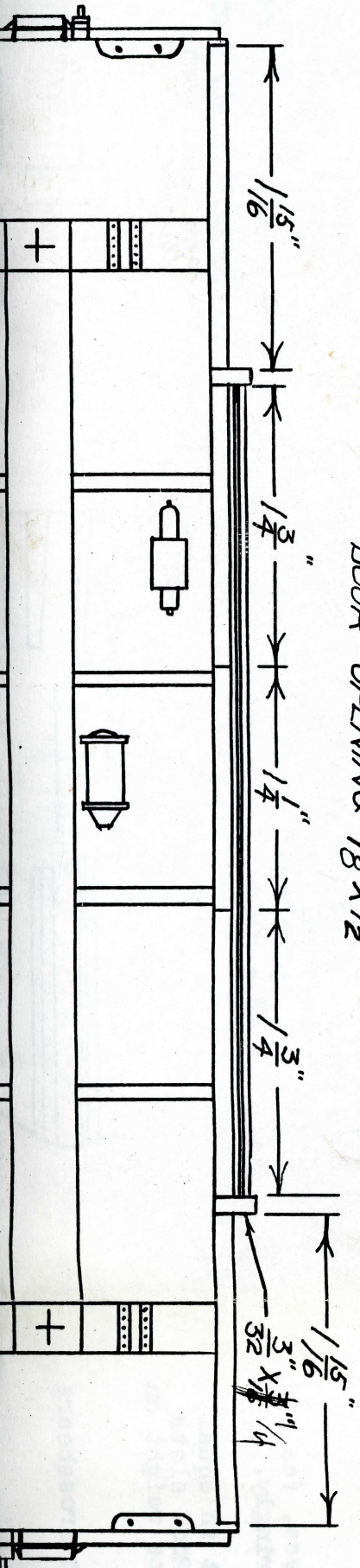
CHANNEL

ALL-NATION HOBBY SHOP
 Specialists in Model Railroads — Scale & Tinplate
 182 No. LaSalle Street • DE. 2-0850 • Chicago 1, Illinois

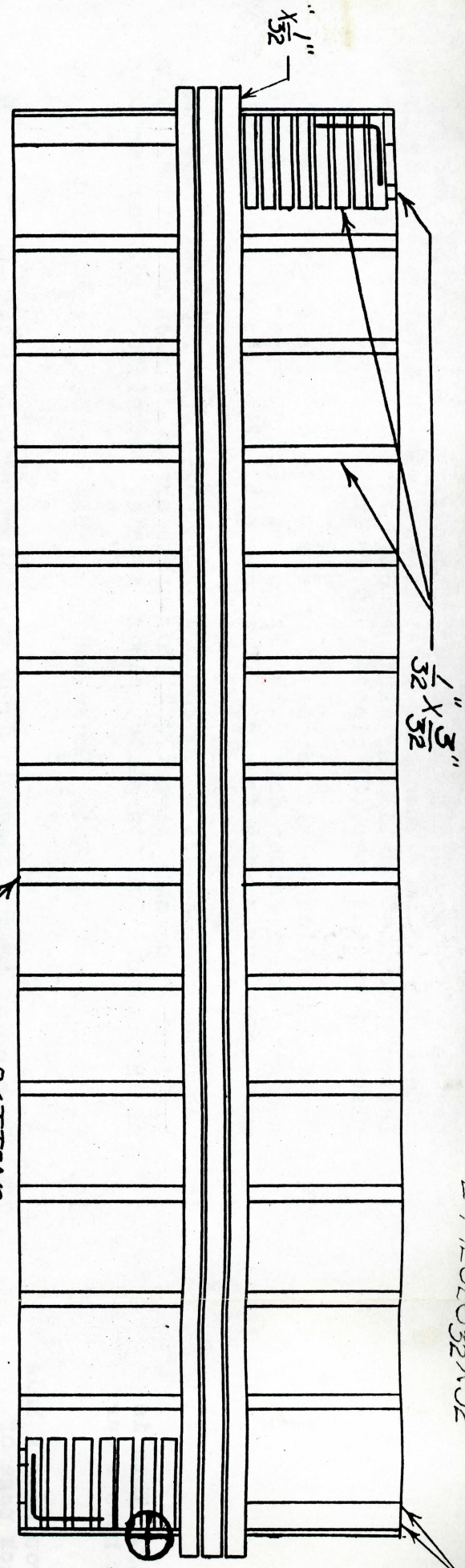
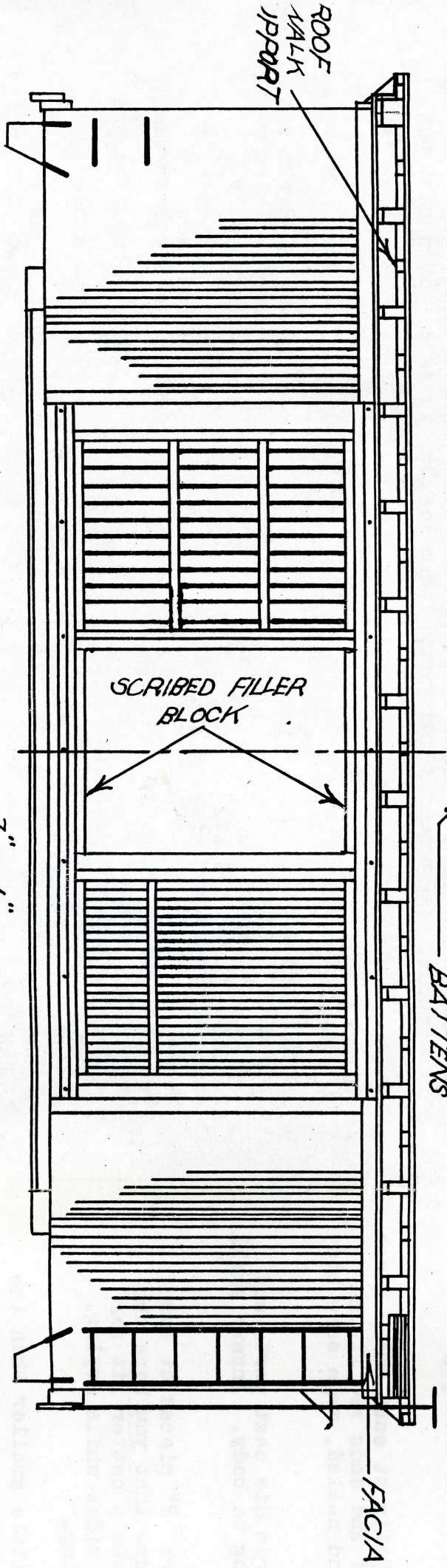


DOOR OPENING $\frac{7}{8} \times \frac{1}{2}$



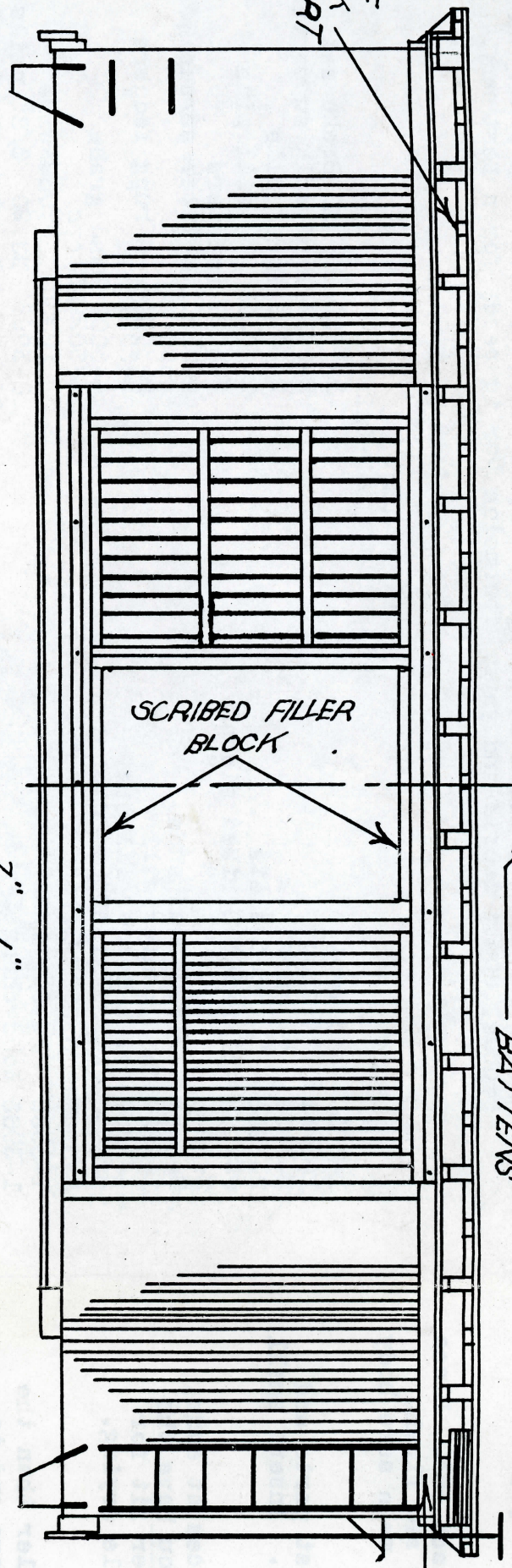


DOOR OPENING $18 \times 7 \frac{1}{2}$ "



A1

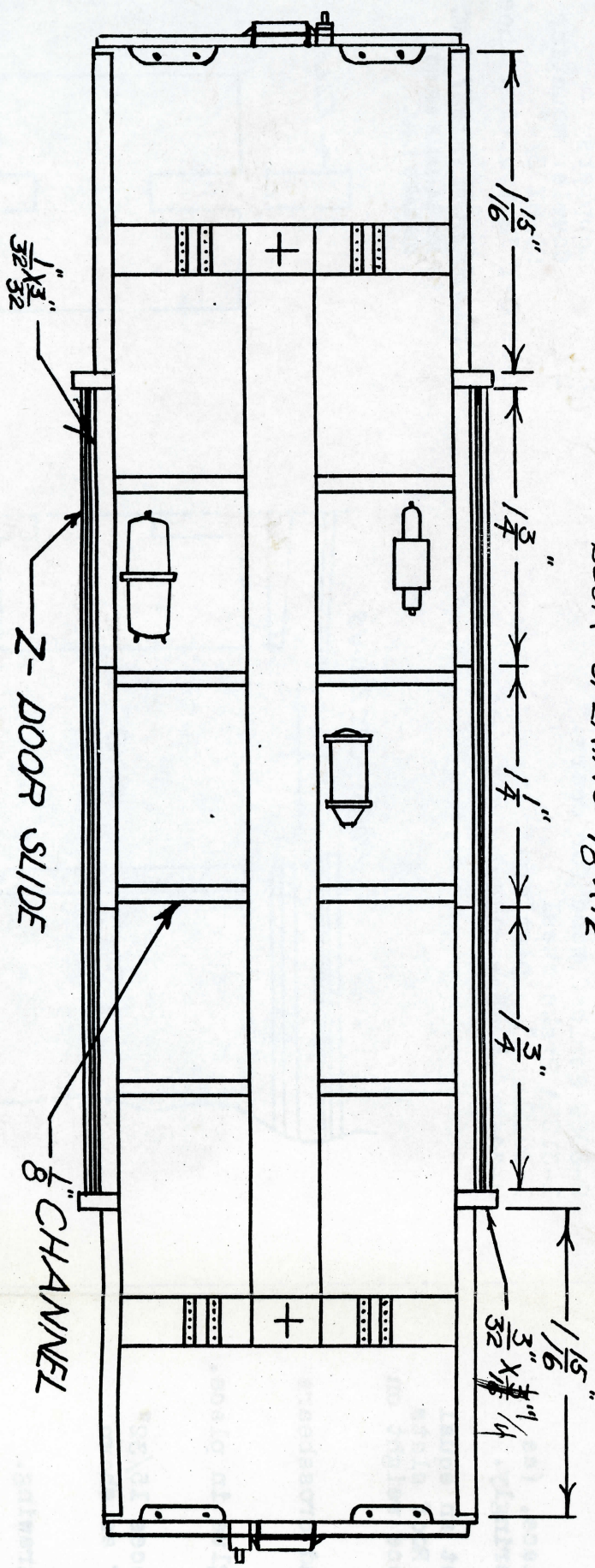
ROOF
WALK
PART



BATTENS

FACIA

DOOR OPENING $1\frac{7}{8} \times 1\frac{1}{2}$ "



$\frac{1}{32}$ "

Z-DOOR SLIDE

$\frac{1}{8}$ " CHANNEL

$\frac{1}{16}$ "

$\frac{1}{4}$ "

$\frac{1}{4}$ "

$\frac{3}{4}$ "

$\frac{1}{16}$ "
 $\frac{3}{32}$ "
 $\frac{1}{4}$ "

$\frac{1}{16}$ "

