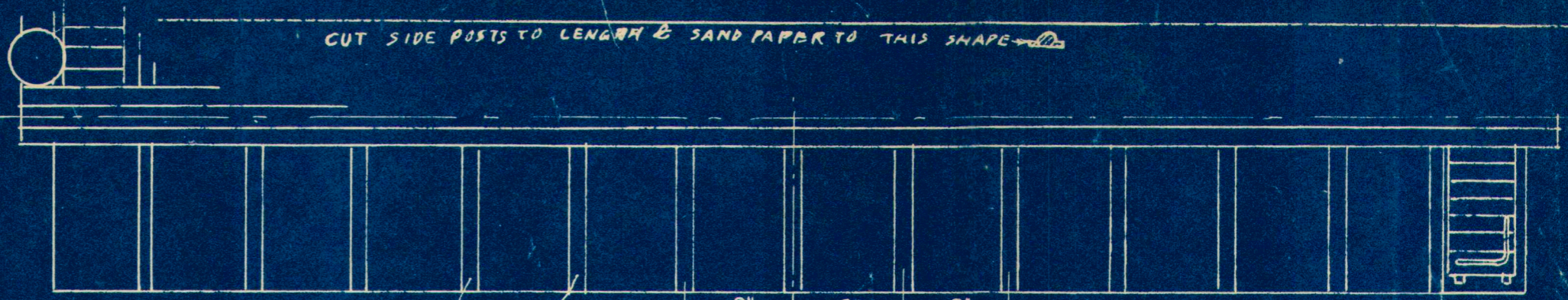
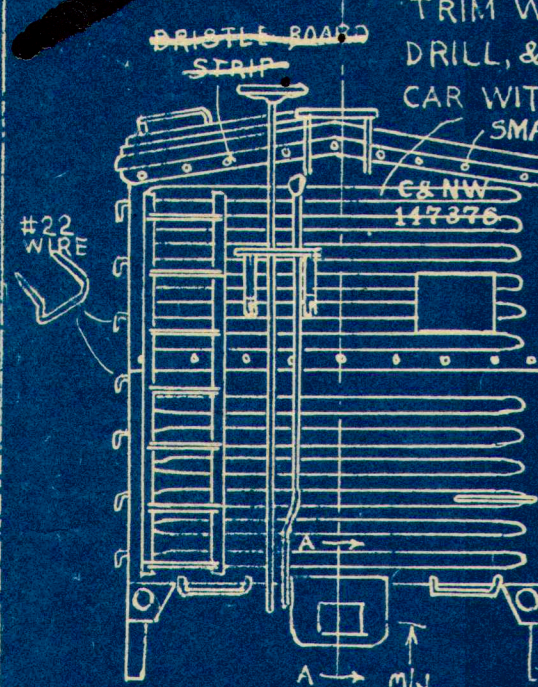


CUT SIDE POSTS TO LENGTH & SAND PAPER TO THIS SHAPE



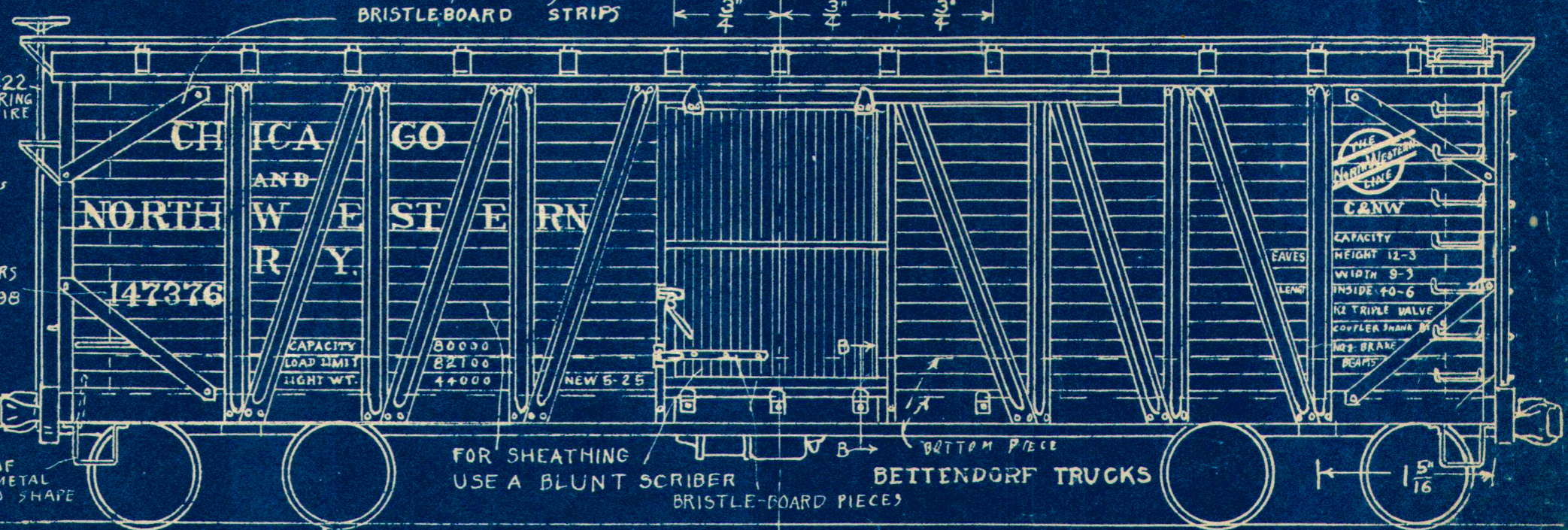
CAST ENDS.
 TRIM WITH SH FILE,
 DRILL, & NAIL TO END OF
 CAR WITH 1/2" BARK PINS OR
 SMALL ESCUTCHEON PINS



TREAT SIDE POSTS #22
 SAME AS
 ABOVE.
 DRILL HOLES FOR ALL
 PARTS MOUNTED ON ENDS
 & TACK INTO WOOD
 UNDERNEATH.

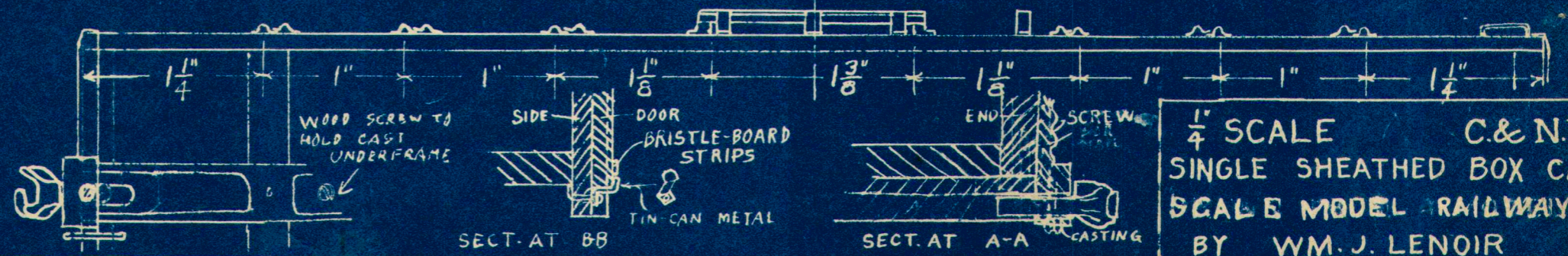
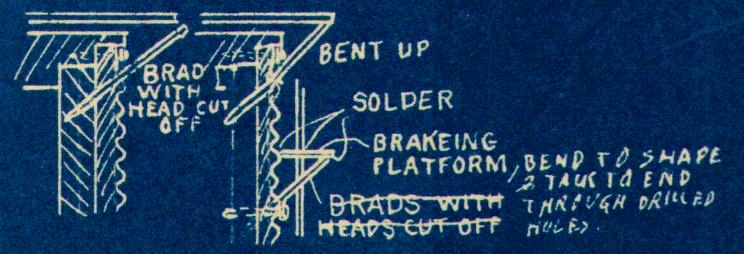
SERIES NUMBERS
 145700 TO 147898

STRIP OF
 TIN-CAN METAL
 BENT TO SHAPE



FOR SHEATHING
 USE A BLUNT SCRIBER
 BRISTLE-BOARD PIECES

THE
 NORTHWESTERN
 RAIL
 C&N.W.
 CAPACITY
 HEIGHT 12-3
 WIDTH 9-3
 INSIDE 10-6
 K2 TRIPLE VALVE
 COWLER SHAFT BY
 K23 BRAKE
 BEAMS



1/4" SCALE C.&N.W.
 SINGLE SHEATHED BOX CAR
 SCALE MODEL RAILWAYS
 BY WM. J. LENOIR

SMRA