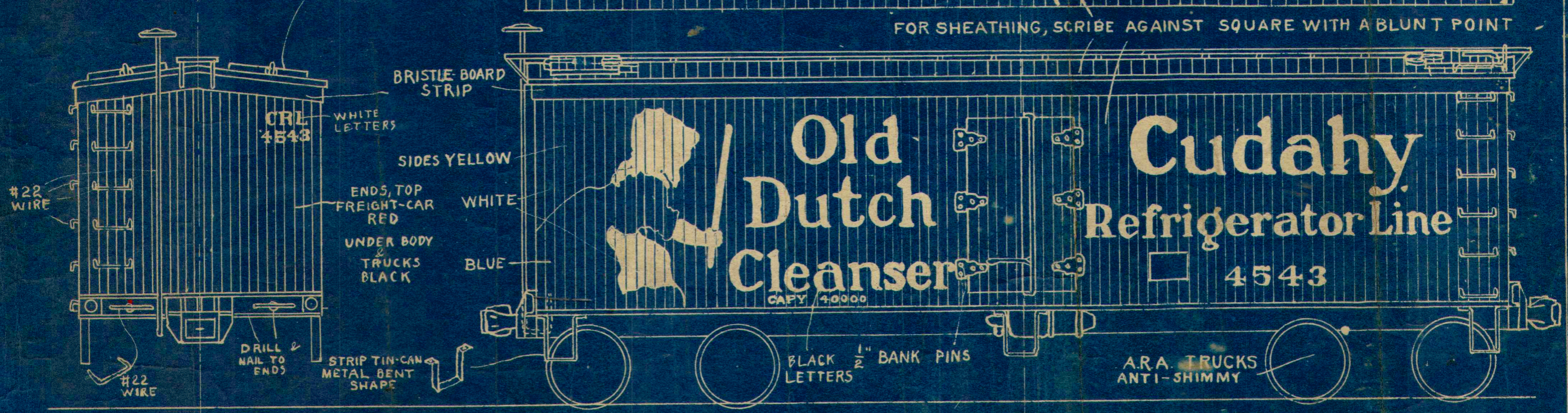


USE A METAL-HOLDING CEMENT TO ATTACH HATCHES

FOR SHEATHING, SCRIBE AGAINST SQUARE WITH A BLUNT POINT



CRL 4543 WHITE LETTERS

#22 WIRE

BRISTLE-BOARD STRIP

SIDES YELLOW

ENDS, TOP FREIGHT-CAR RED

UNDER BODY & TRUCKS BLACK

WHITE

BLUE

Old Dutch Cleanser

Cudahy Refrigerator Line

4543

CAPY 40000

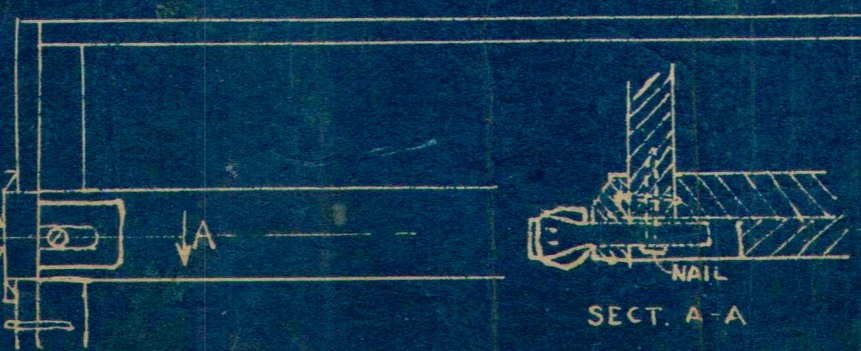
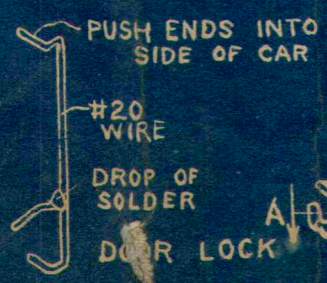
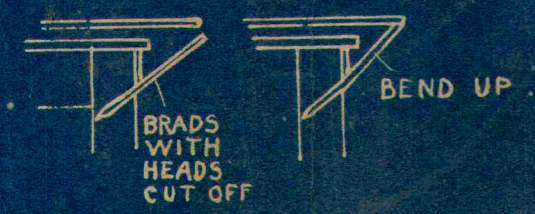
A.R.A. TRUCKS ANTI-SHIMMY

BLACK 1/2" BANK PINS LETTERS

DRILL NAIL TO ENDS

STRIP TIN-CAN METAL BENT SHAPE

#22 WIRE



SERIES NO'S. 4501 TO 4898

1/4" SCALE C.R.L.  
 CUDAHY REFRIGERATOR  
 DRAWN FROM A MODEL  
 BY WM J LENOIR

SMRA