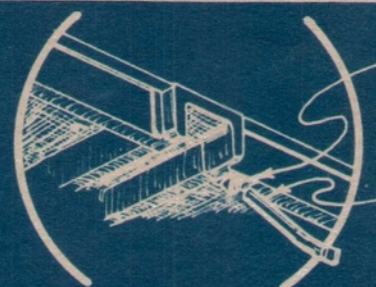


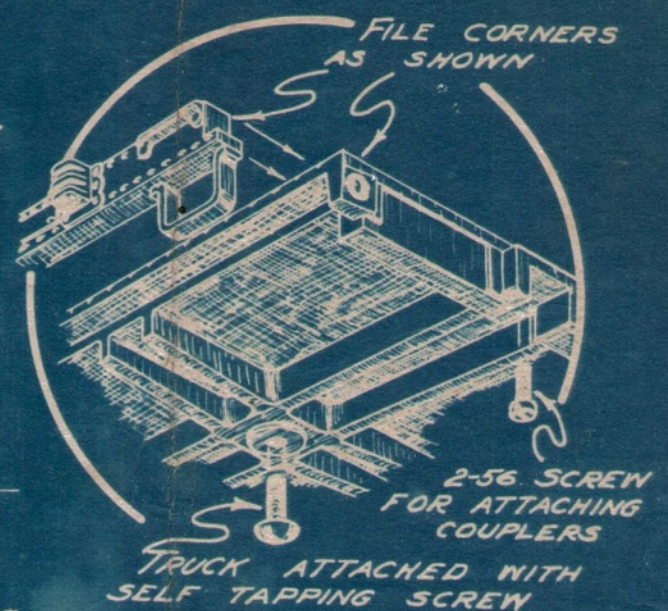
AIR HOSE DETAIL
 DRILL #52. BEND AIR HOSE FROM 1/8" DIA. BRASS WIRE, FLATTEN END, AND FORCE INTO HOLE.



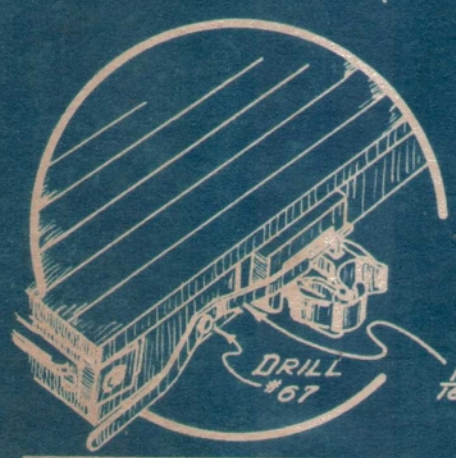
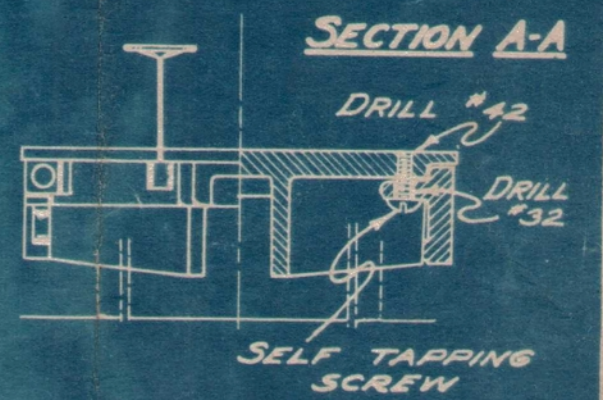
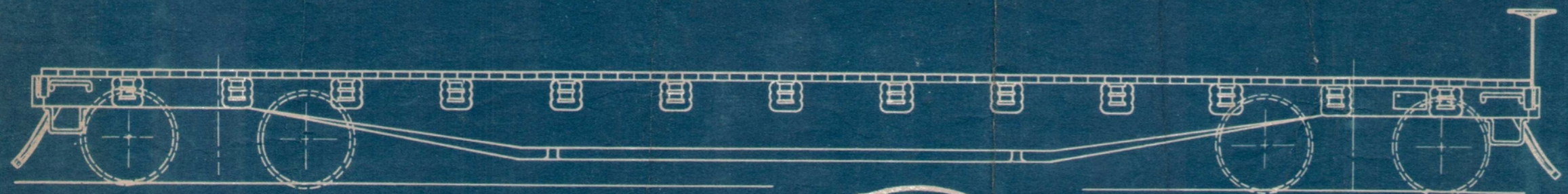
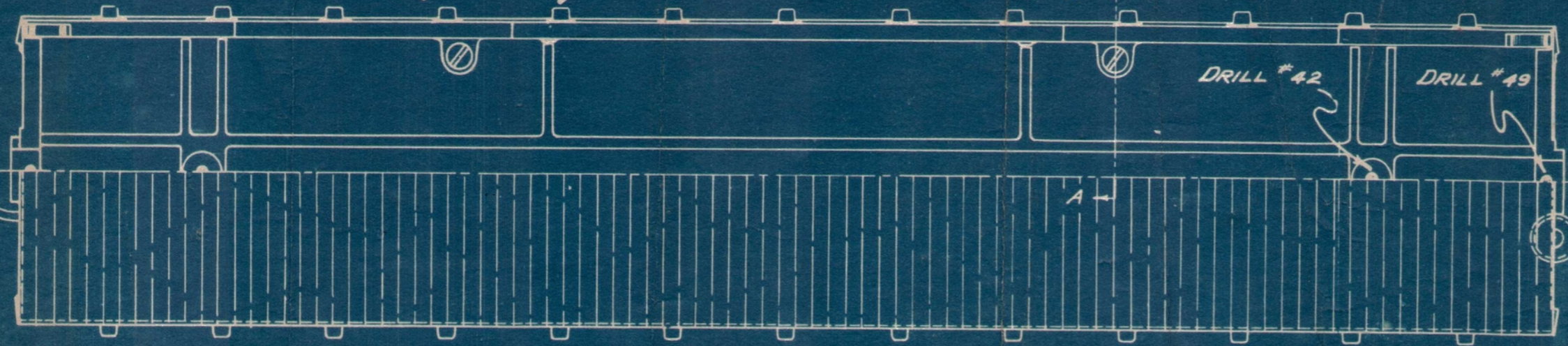
DRILL #52
 TIN END OF AIR HOSE WITH SOLDER IF TIGHTER FIT IS DESIRED.



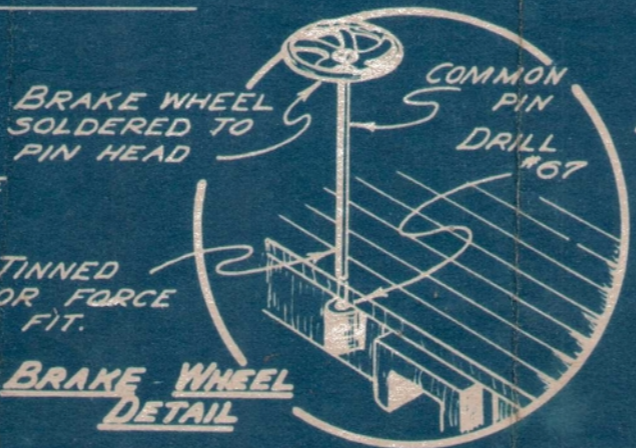
IF STAKES ARE DESIRED, DRILL THE STAKE POCKETS WITH #49 DRILL AND FORCE 1/8" SQUARE BRASS RODS INTO THESE HOLES. ROUND THE ENTERING EDGE SLIGHTLY WITH A FILE TO GUIDE.



FILE CORNERS AS SHOWN
 2-56 SCREW FOR ATTACHING COUPLERS
 TRUCK ATTACHED WITH SELF TAPPING SCREW



AUTOMATIC COUPLERS, ALTHOUGH NOT FURNISHED IN KIT, MAY BE ATTACHED AS SHOWN. PIVOT IS MADE BY FORCING COMMON PIN INTO #67 HOLE.



COMMON PIN
 DRILL #67
 TINNED FOR FORCE FIT.
BRAKE WHEEL DETAIL

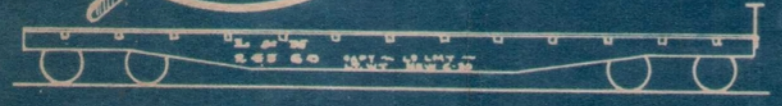
CONSTRUCTION NOTES

The castings should first be filed until they fit together as shown in the detail. File lightly and carefully, keeping the corners sharp and square. Drill the floors and frame casting with No. 42 drill at the "spotted" positions on the underside. Clamp or otherwise hold the sides in position on the floor and frame casting, and drill the side assembly lugs also with a No. 42 drill using the holes in the floor as guides. Redrill the side assembly lugs with a No. 32 drill and attach the sides. Use 4-40 self tapping screws. It is advisable to use a large screw driver for insertion. Drill the center plates with No. 42 drill and fasten the trucks on also with 4-40 self tapping screws. Drill with No. 49 drill at the spotted positions for the couplers and tap 2-56. Attach coupler with 1/4" fillister head 2-56 screw. Polling pockets are made by center punching and lightly drilling with No. 27 drill. The brake wheel is fastened by putting wheel on a common pin and soldering it to the head. Drill the brake wheel "boss" with a No. 67 drill, tin the bottom of the brake wheel axle with solder and force it into the hole. The air hoses are made of 1/16"

diameter brass wire bent to shape and flattened at one end as shown in the detail. Tin the end with solder and force it into No. 52 hole drilled in frame casting.

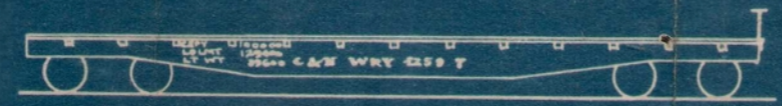
PAINTING & FINISHING.

Give the car including trucks, two coats of freight car red all over and apply lettering. It has been found by many model builders that a coat of flat varnish not only preserves, but reduces the gloss of the finish and gives the model a much more realistic appearance.



L & N SERIES 24300 to 24799

LETTERING DETAIL



C & NW SERIES 42501 to 42699

MEGOW'S MODELS

50 TON FLAT CAR

SCALE 1/2" = 1' 0"

DRAWING - FULL SIZE

Fred C. Tuxworth