

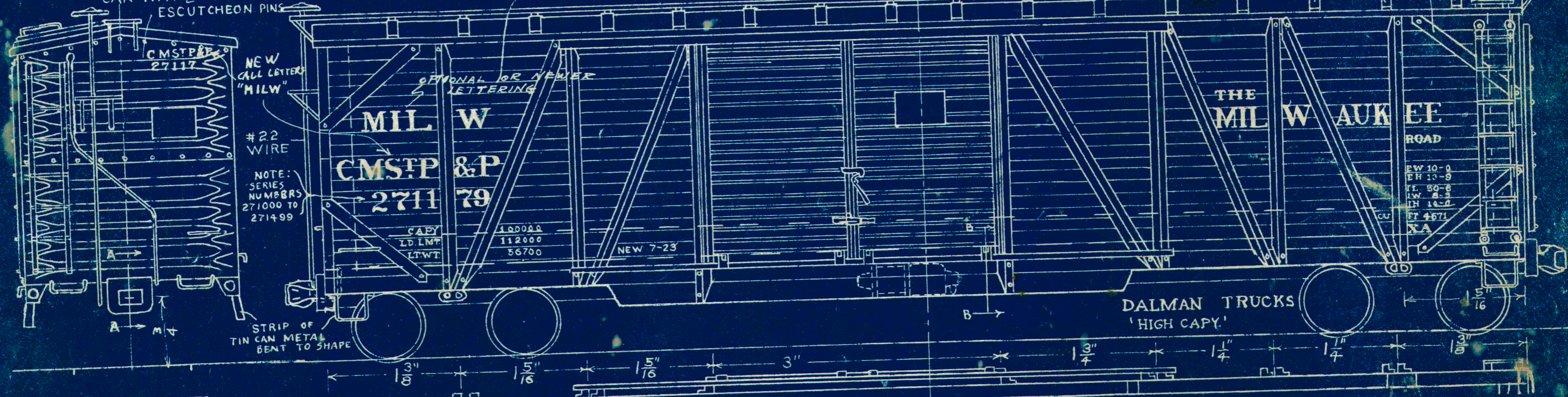
DRILL HOLES FOR ALL PARTS MOUNTED ON END & NAIL INTO WOOD BENEATH

"DREADNOUGHT" ENDS.
TRIM WITH FILES.
DRILL & NAIL TO END OF
CAR WITH 1/2" BANK PINS OR
ESCUTCHEON PINS

FOR SHEATHING USE A BLUNT SCRIBER

BRISTLE-BOARD STRIPS

3/4" 3/4" 3/4"



NEW CALL LETTERS "MILW"
#22 WIRE
NOTE: SERIES NUMBERS 271000 TO 271499

OPTIONAL OR NEWER LETTERING

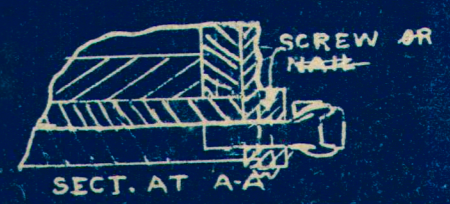
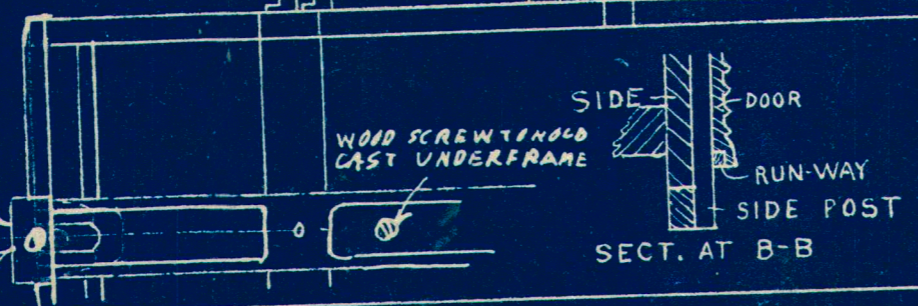
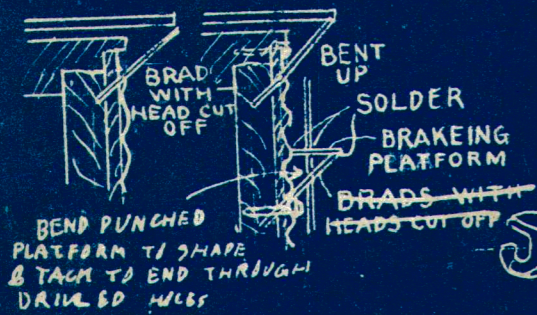
MIL W
CMSTP & P
2711 79

COPY 100000
ID. LMT 112000
LTWT 56700

NEW 7-23

STRIP OF TIN CAN METAL BENT TO SHAPE

DALMAN TRUCKS
'HIGH CAPY.'



50FT. AUTO. CAR
1/4" SCALE CMSTP & P
SCALE MODEL RAILROADS

BY WM. J. LEVY

SMR