

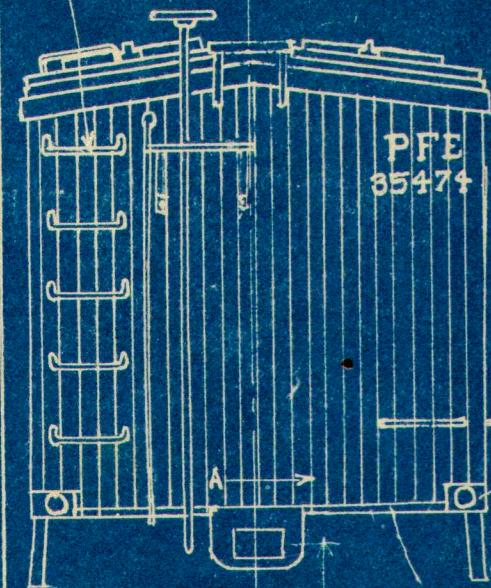
NOTE:
DOOR HINGES MADE OF PIECES BRISTOL-BOARD, OR USE STAMPINGS. FASTEN ON WITH $\frac{1}{8}$ " BANK-PINS.

#22 WIRE
DOOR LOCK

PUSH ENDS INTO SIDE OF CAR

#20 WIRE

DROP SOLDER

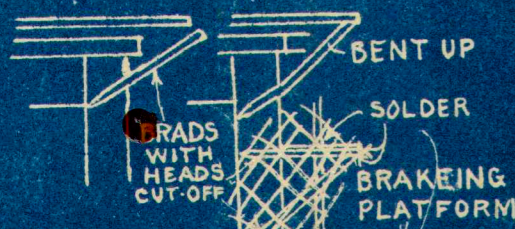


CEMENT ON WITH ANY METAL-HOLDING CEMENT

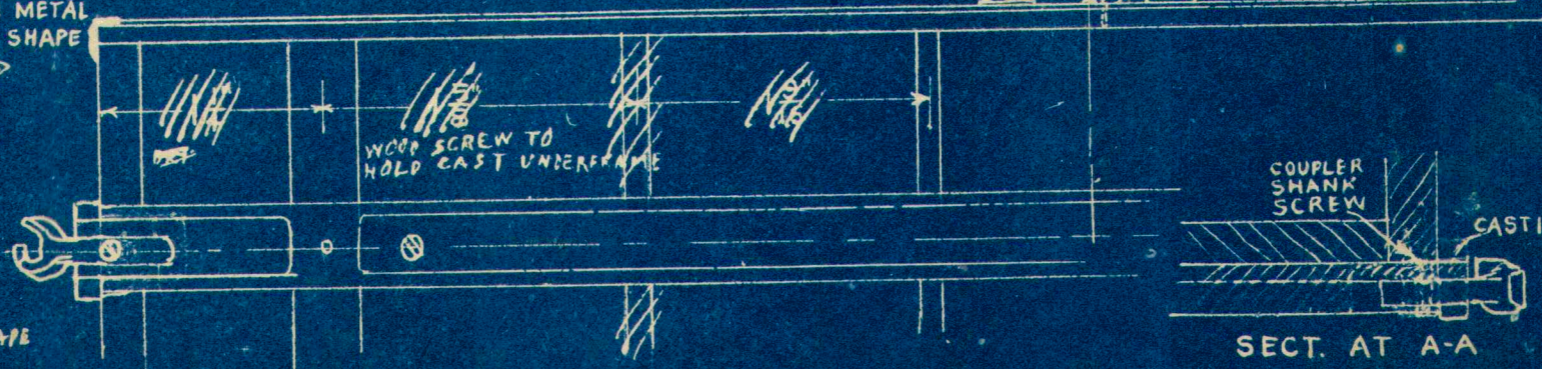
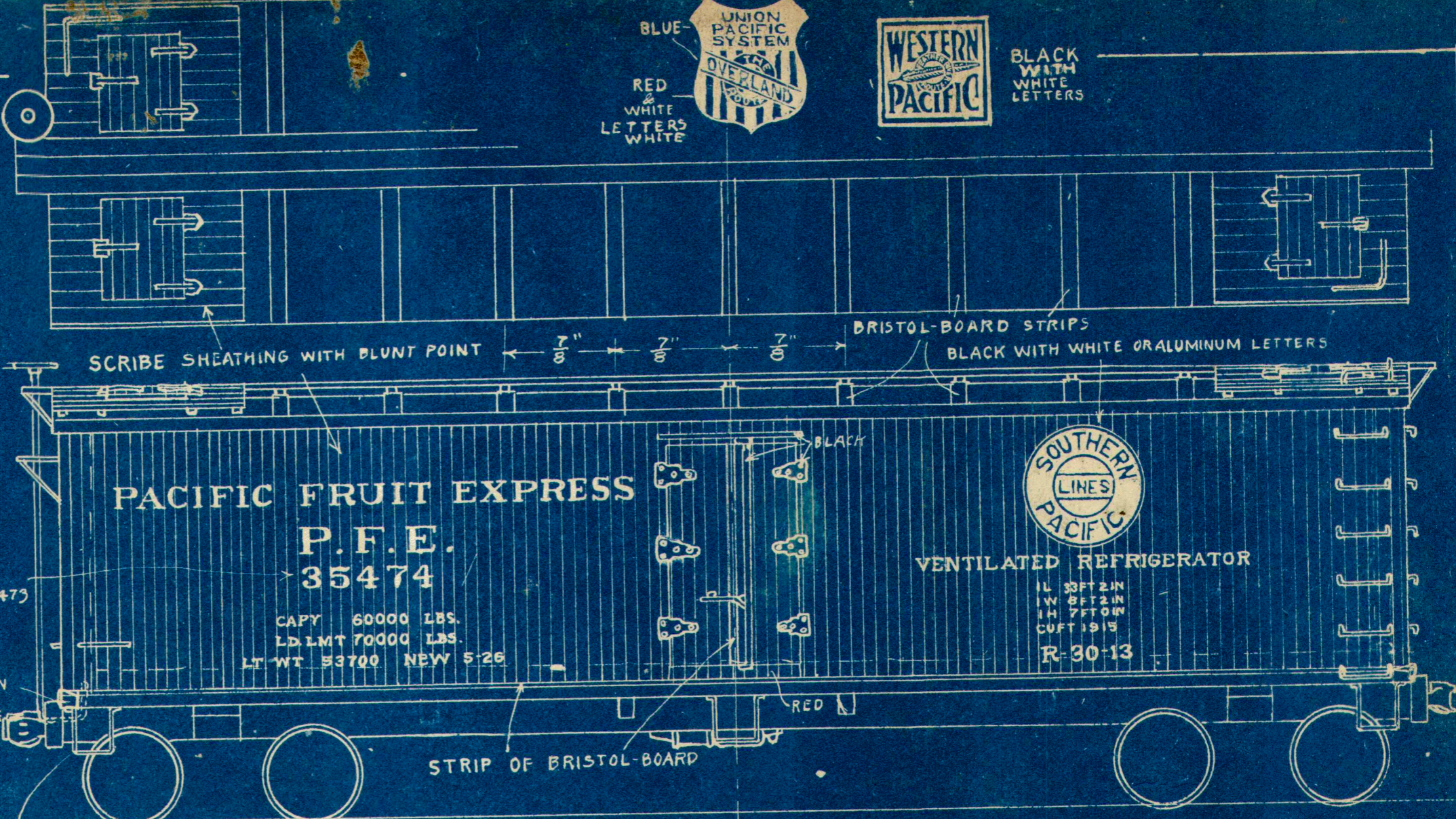
STRIP OF BRISTOL-BOARD

SERIES NUMBERS 31250 TO 36473

STRIP OF TIN-CAN METAL BENT TO SHAPE



BEND PUNCHED PLATFORM TO SHAPE & TACK TO END



COLORS:
SIDES - ORANGE
ENDS, ROOF & BOTTOM - FREIGHT CAR RED
ALL METAL WORK ON SIDES - BLACK

$\frac{1}{4}$ " SCALE PFE
30 TON REFRIGERATOR
SCALE MODEL RAILWAYS

BY WM. J. LENOIR
TEMPORARY DRAWING

SMRA