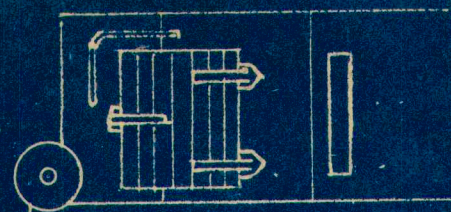
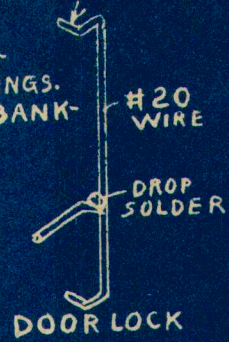
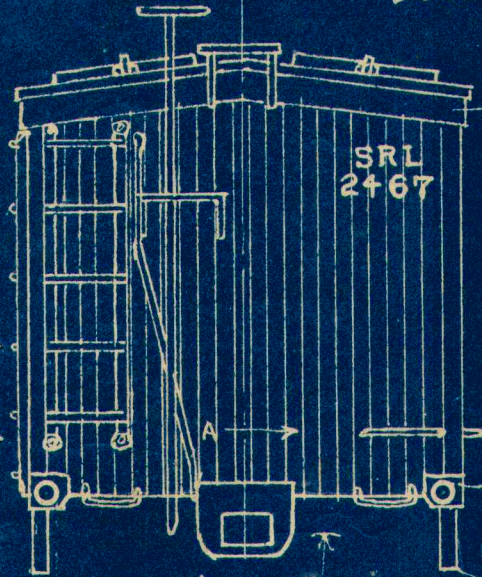


NOTE:  
DOOR HINGES MADE  
OFF PIECES OF BRISTOL-  
BOARD, OR USE STAMPINGS.  
FASTEN ON WITH  $\frac{1}{2}$ " BANK-  
PINS.

PUSH ENDS INTO  
SIDE OF CAR



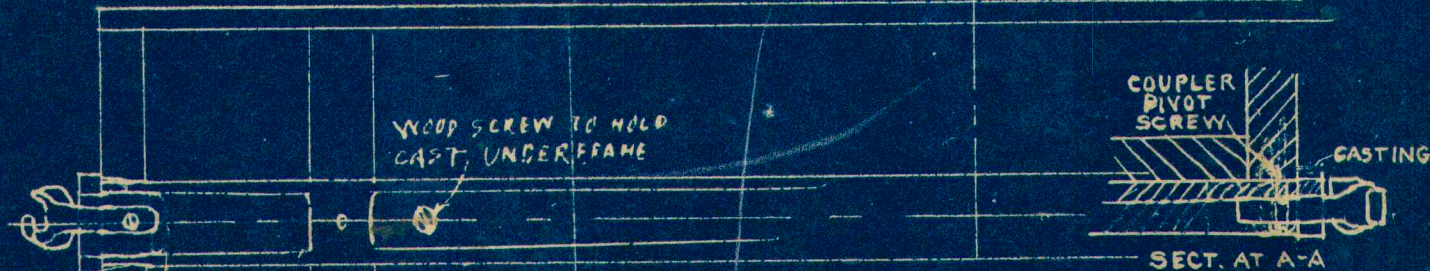
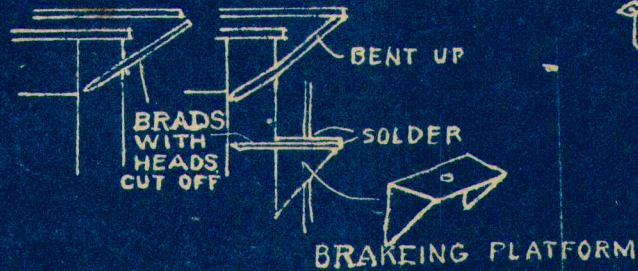
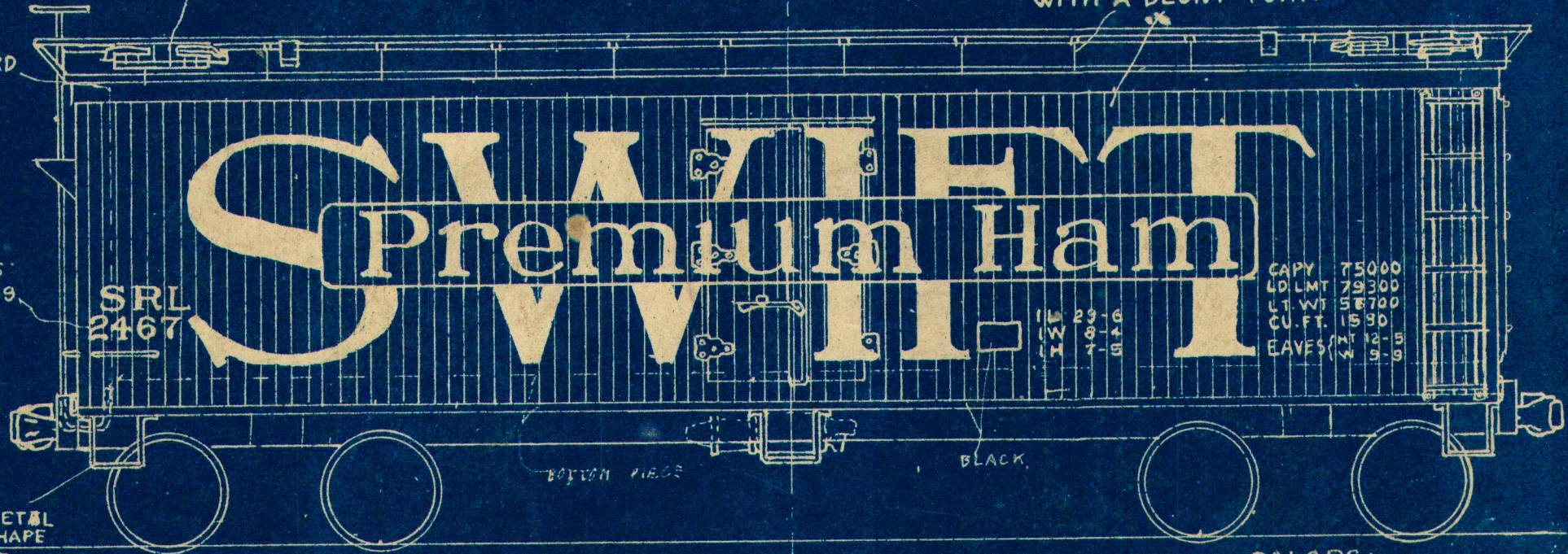
FOR SHEATHING, SCRIBE AGAINST SQUARE  
WITH A BLUNT POINT



BRISTOL-BOARD  
STRIP

SERIES  
NUMBERS  
2300 TO 2699

#22 WIRE  
FASTEN WITH A  
METAL HOLDING-  
CEMENT



COLORS:  
SIDES - YELLOW  
ROOF & ENDS - RED  
UNDERBODY - BLACK  
LETTERS - BLACK

$\frac{1}{4}$ " SCALE S.R.L.  
REFRIGERATOR  
SCALE MODEL RAILWAYS  
BY WM. J. LENOIR