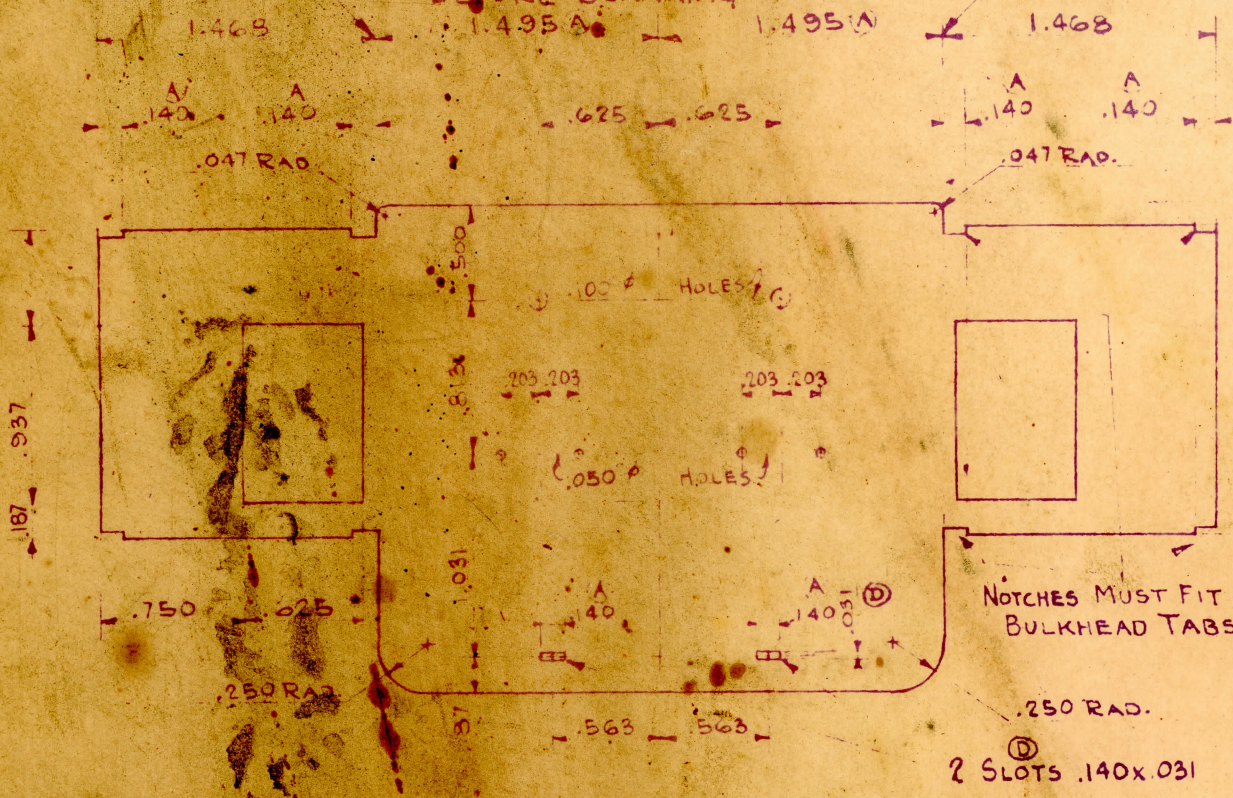
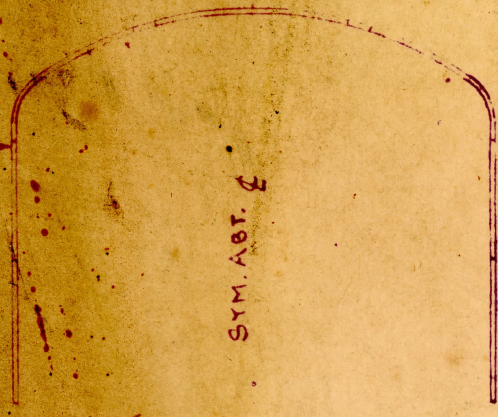


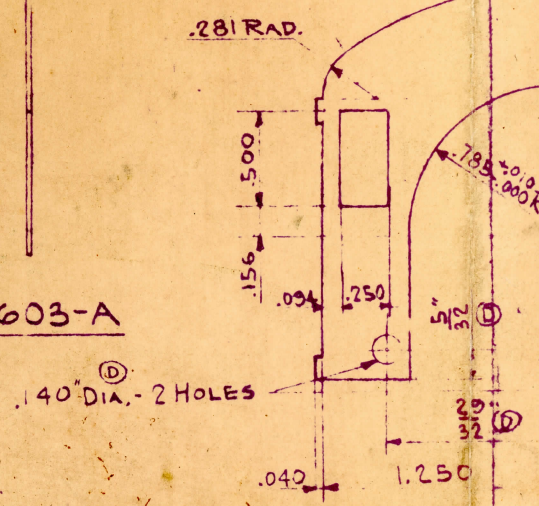
A NOTE
CHECK FOR BEND ALLOWANCE
BEFORE BLANKING.



BEND TO FIT BULKHEAD -
CHECK DIMENSIONS BEFORE
MAKING DIE.



CAB BODY - #22 GA. (.025) H.H. BRASS - 1603-A



* EXCEPT PARTS TO FIT

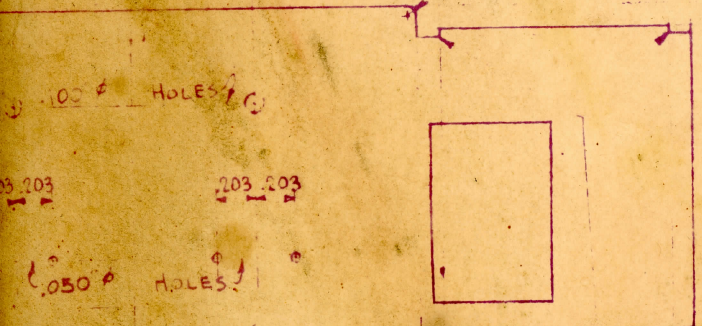
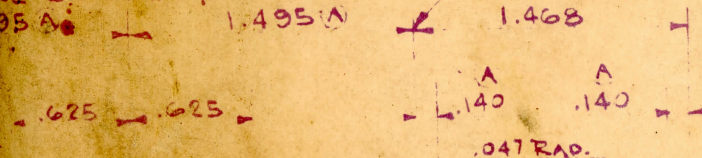
DRAWING NUMBER: 603
 DATE: 1-11-46
 PART: CAB DETAILS - STAMPING
 MODEL: B-10 WHEELER
 GA. OR SCALE: #0
 CODE NUMBER

NO.	BY	CHANGES	DATE	APPROVED
①	LED	.140" HOLES ADDED NOTE	5/3/46	
②	LED	.031 CORRECTED WAS .130 - ADDED 1/32" - 5/32"		
③	LED	ADDED 1/2" & 3/32" DIMENSIONS	3/30/46	
④	LED	.032 WAS .035 - .135 WAS .100 - 12 WAS .034 5/32" WAS 1/32"	2-18-46	
⑤	LED	.425 WAS 1.480 - .140 WAS .130 - ADDED NOTE: SEE DRAWING	2-8-46	

DATE	TOLERANCES
1/11/46	UNLESS OTHERWISE SPECIFIED
	DECIMAL ± .015*
	FRACTIONAL

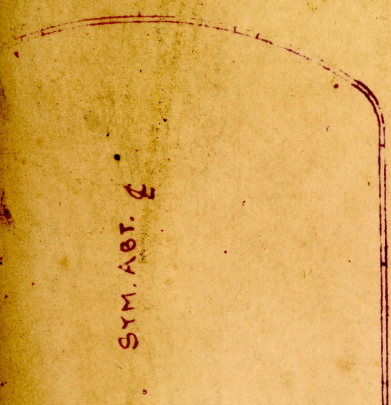
FOR BEND ALLOWANCE

BLANKING



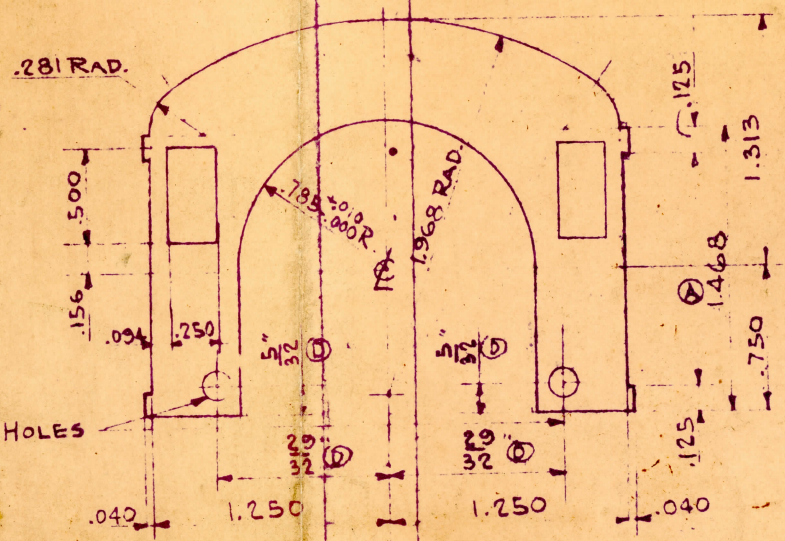
NOTCHES MUST FIT BULKHEAD TABS.

2 SLOTS .140x.031



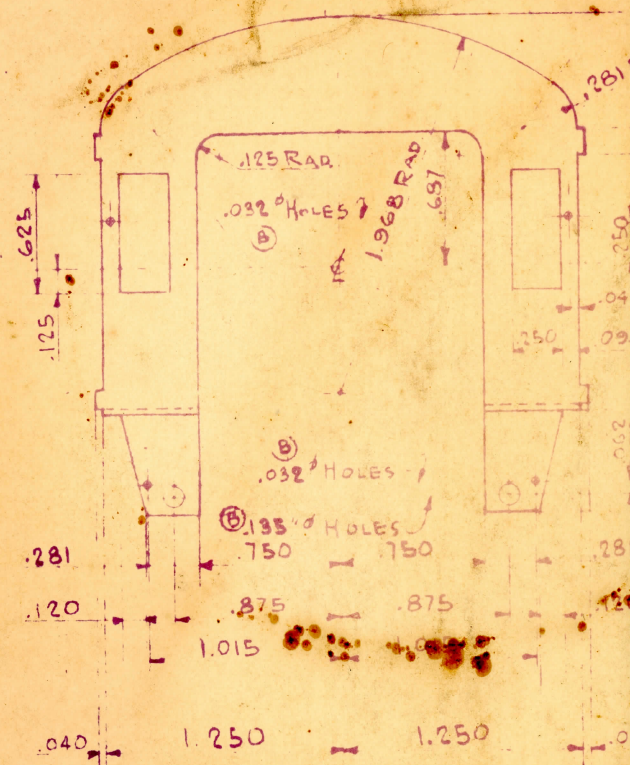
(.025) H.H. BRASS - 1603-A

.140" DIA. - 2 HOLES



FRONT CAB BULKHEAD - #20 GA. (.032) H.H. BRASS - 1603-C

REAR CAB BULKHEAD - #20 GA. (.032) H.H. BRASS



* EXCEPT PARTS TO FIT

DATE	DESCRIPTION
5/3/46	DRAWING LED
3/30/46	TRACING
2-18-46	CHECKED
2-8-46	DATE APPROVED

TOLERANCES
UNLESS OTHERWISE SPECIFIED

DECIMAL ±.015*

FRACTIONAL

VARNEY
1239 W. FULLERTON AVE.
CHICAGO 14 ILLINOIS

MATERIAL
SCALE OF
GAUGE OR