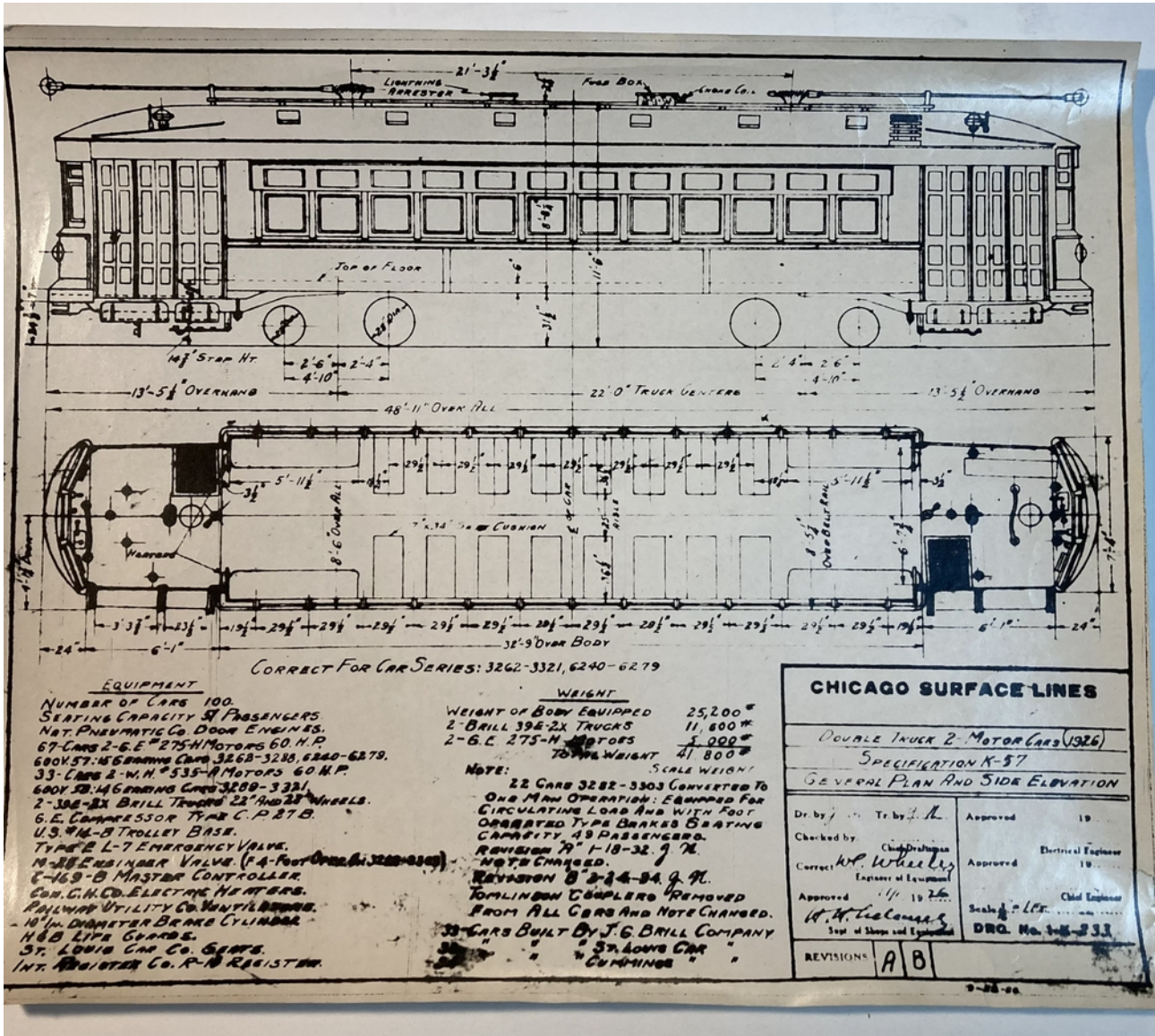
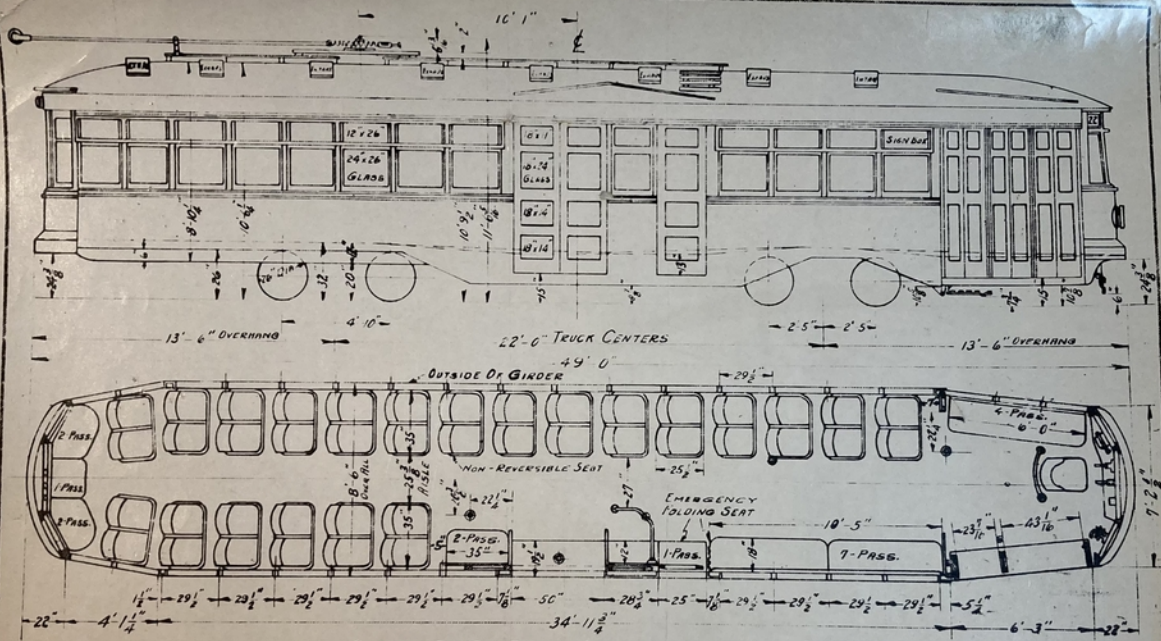


THE

MODEL RAILROADS, SHIPS, PLANES
ALL-NATION HOBBY SHOP





CORRECT FOR CAR SERIES 3322-3381, 6280-6319.

EQUIPMENT
 NUMBER OF CARS 100
 SEATING CAPACITY 60 PASSENGERS
 NAT. PNEUMATIC CO. DOOR ENGINES
 60-CARS 4-W.H.*516-D MOTORS 50 H.P.
 600 V. 33-14 GEARING CARS 3322-3381.
 40-CARS 4-G.E. 301-B3 MOTORS 50 H.P.
 600 V. 64-15 GEARING CARS 6280-6319.
 2-76-E-2 BRILL TRUCKS 26" DIA. WHEELS
 G.E. COMPRESSOR TYPE CP-27-B
 D.B. FORM 5 TROLLEY BRIDGE
 TYPE D-3 EMERGENCY VALVE
 TYPE 3L-6 ENGINEER VALVE
 F.C.M. AUTOMATIC CONTROL C-516
 10" DIA. BRAKE CYLINDER
 H+B LIFE GUARD
 INT. REGISTER CO. R-10 REGISTER
 RAILWAYS UTILITY CO. HEATERS
 RAILWAYS UTILITY CO. VENTILATORS
 HALE & KILBURN CO. SEATS EXCEPT FOR CARS BUILT BY J.G. BRILL CO.

WEIGHT
 WEIGHT OF BODY ALONE 19,250 LBS.
 TRUCKS PER PAIR 13,200 "
 MOTOR & CONTROL EQUIPMENT 10,300 "
 AIR BRAKE EQUIPMENT 1,250 "
 44,000 LBS.

33-CARS BUILT BY J.G. BRILL CO.
 33 " " " CUMMINGS CAR & COACH CO.
 34 " " " CHICAGO SURFACE LINES

3322 HAS REAR EXIT TREADLE DOOR
 3341 HAS FOLDING CENTER EXIT DOORS
 6306 BODY MODIFIED TO TAKE BRILL 85-E TR
 REVISION "A" 4-21-1924.
 ALL CROSS SEATS
 MOVED 3" FORWARD &
 EXHAUST VENTILATORS ADDED

CHICAGO SURFACE LINES

SINGLE END, DOUBLE TRUCK, 4-MOTOR CARS (1924)

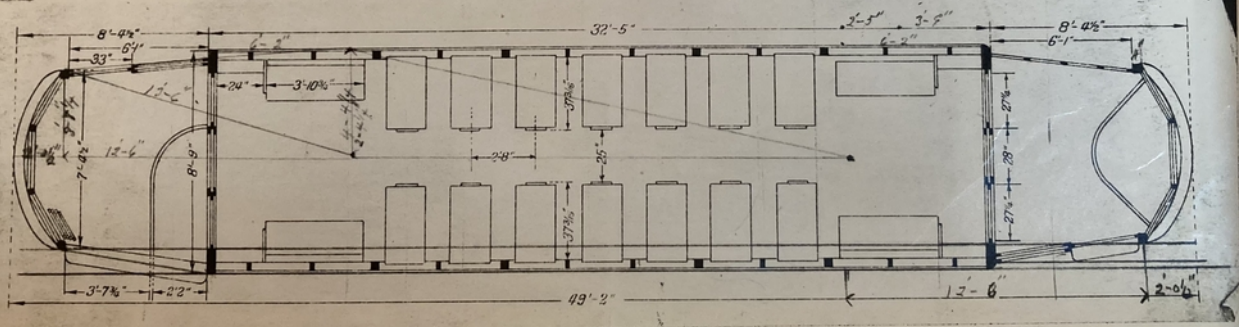
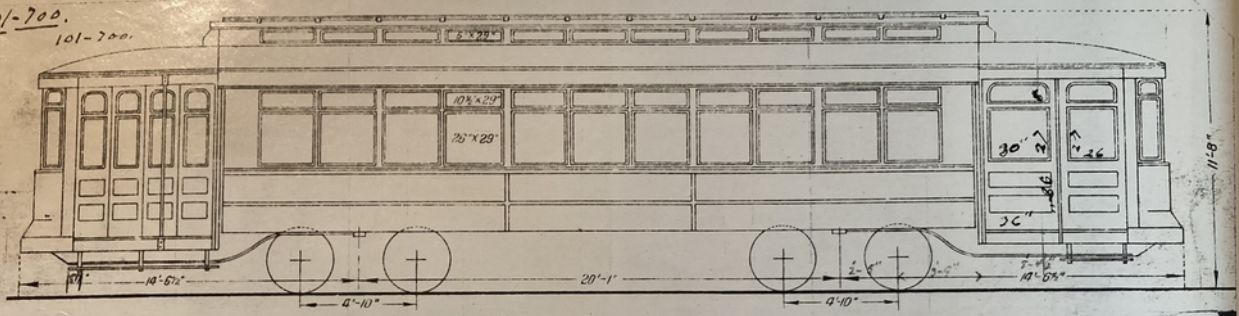
SPECIFICATION N-60

GENERAL PLAN + ELEVATION

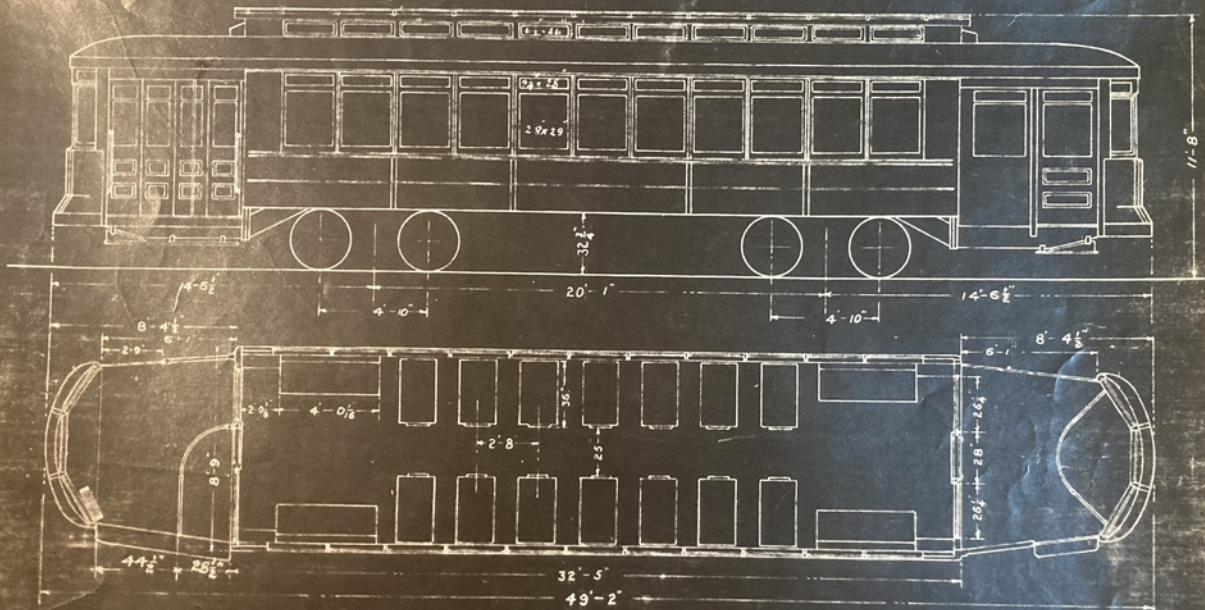
Dr. by J.N.	Tr. by A.V.	Approved	19.....
Checked by	Chief Draftsman	Electrical Engineer
Corrected by	W. Wheeler	Approved	19.....
.....	Engineer of Equipment	Chief Engineer
Approved	1924	Scale 3/16" = 1'-0"	DRG. No. 1-K-246
.....	Sup. of Shops and Equipment		

REVISIONS **A**

01-700.
101-700.



STANCO, INC.



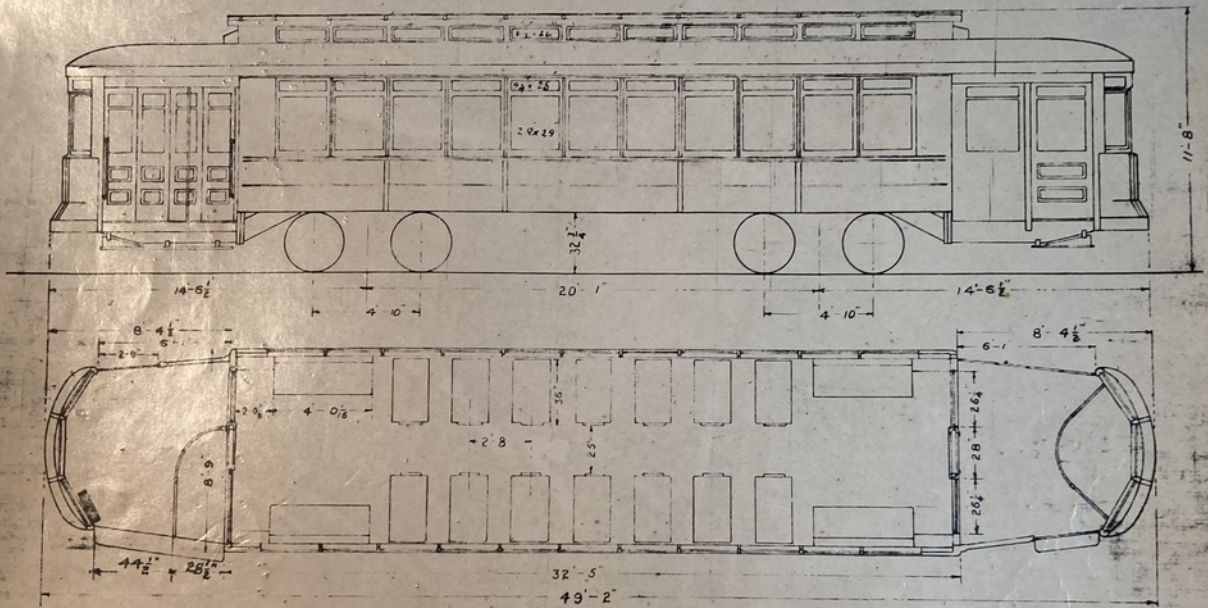
EQUIPMENT.

- NUMBER CARS - 50
- WEIGHT - 52,000 LBS
- SEATING CAPACITY - 40
- 4 GE 216 MOTORS
- K35C - CONTROLLERS
- NAT. BRAKE - A 4-16 FT COMPRESSOR
- 3 1/2 U.S. #14 TROLLEY BASE
- H & B - LIFE GUARDS
- CONSOLIDATED CAR HEATING CO. ELECTRIC HEATERS
- BALDWIN PULLMAN #150 TRUCKS
- BUILT BY PRESSED STEEL CAR CO. - 1909

FEBRUARY, 1ST 1911

CHICAGO RAILWAYS COMPANY
 ROLLING STOCK
 701 TO - 750 - INCL.
 STEEL-P-A-Y-E-MOTORCAR
 CAR SHOPS DEPT.

2220



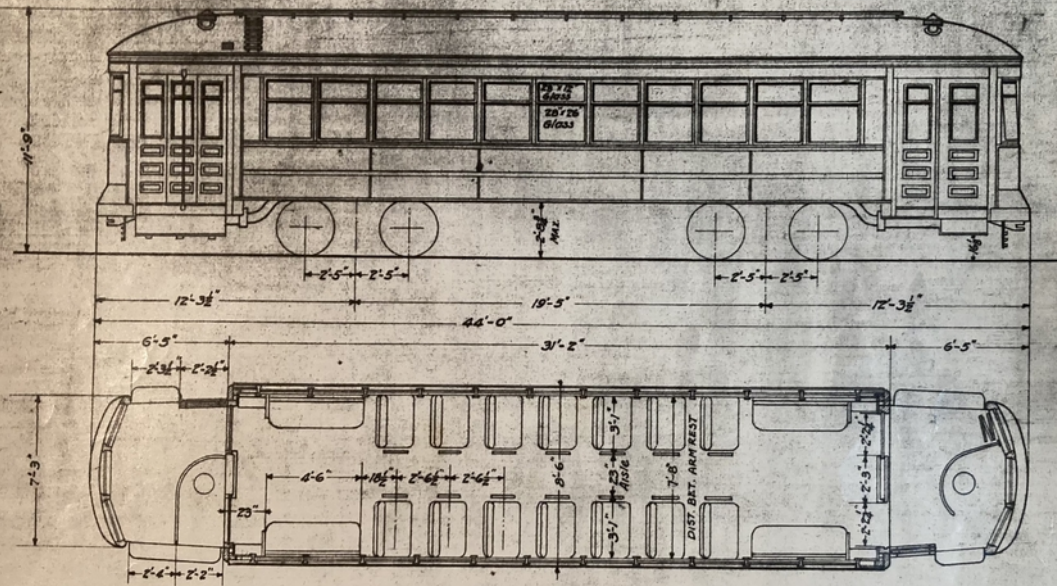
EQUIPMENT.

- NUMBER CARS - 50
- WEIGHT 52,000 LBS
- SEATING CAPACITY 40
- 4 GE 216 MOTORS
- K35C - CONTROLLERS
- NAT. BRAKE - A4-16 FT COMPRESSOR
- 3 1/2 U.S. #14 TROLLEY BASE
- H & B - LIFE GUARDS
- CONSOLIDATED CAR HEATING CO. ELECTRIC HEATERS.
- BALDWIN PULLMAN #150 TRUCKS.
- BUILT BY PRESSED STEEL CAR CO. - 1909.

FEBRUARY, 1ST 1911

CHICAGO RAILWAYS COMPANY
 ROLLING STOCK
 701 TO - 750 - INCL.
 STEEL-P-A-Y-E-MOTORCAR
 CAR SHOPS DEPT.

2220

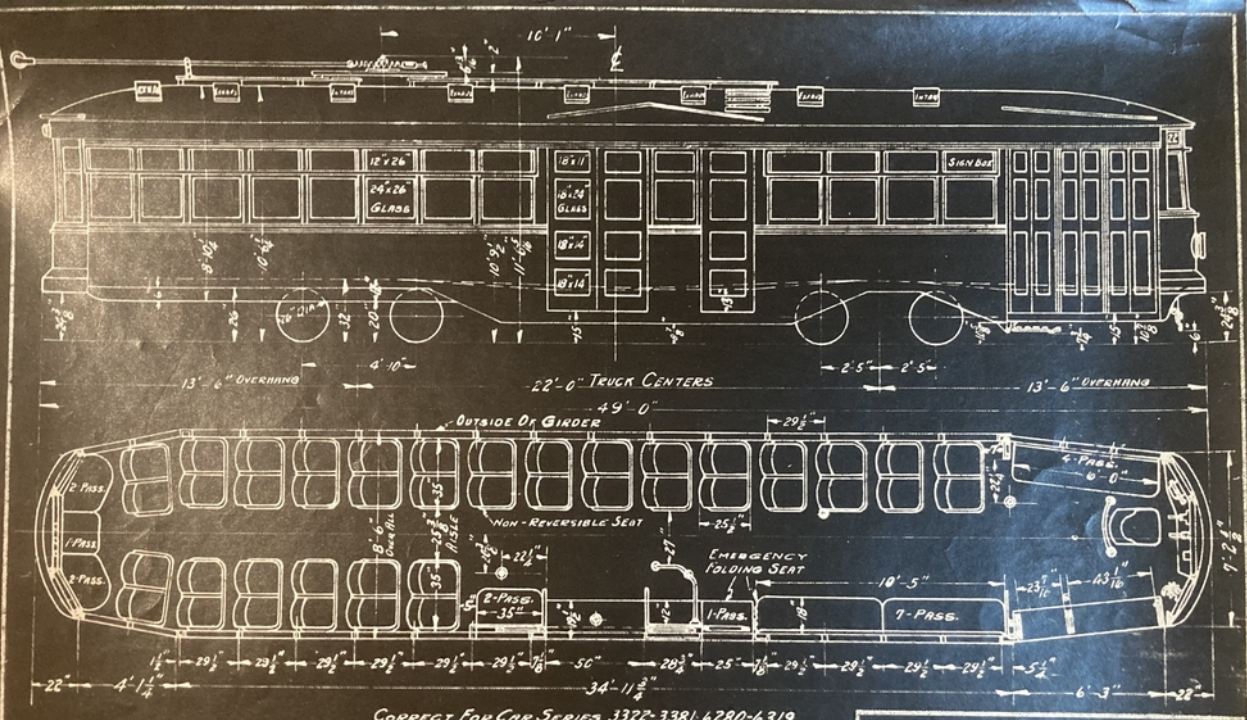


EQUIPMENT

- NUMBER OF CARS 71
- WEIGHT 45,300
- SEATING CAPACITY 40
- G.E. 226-A MOTORS
- K-35-G CONTROLLERS
- NATIONAL A-4-16-0 COMPRESSORS
- 3/8 U.S. #14 TROLLEY BUSES
- COOKE PATENT VACUUM VENTILATORS
- M.B. LIFE GUARDS
- CONSOLIDATED CAR HEATING CO. ELECTRIC HEATERS
- BRILL ET. G-E-I. TRUCKS
- CHICAGO RAILWAYS CO. STANDARD PROCESS OF PRINTING
- HAND OPERATED DOOR OPENER FOR EXIT SLIDING DOOR
- FURSYTH BROS. BRASS SERS
- KEYSTONE PNEUMATIC BELL RINGS
- CONSOLIDATED CAR HEATING CO. PUSH BUTTON, BUZZER SIGNAL SYSTEM
- BUILT BY CHICAGO RAILWAYS CO. 1911-1912

CHICAGO RAILWAYS COMPANY
 ROLLING STOCK
 1506-1576 INCL.
 1910-P.A.Y.E. MOTOR CAR
 ENGINEERING DEPT.

2220-6B



EQUIPMENT

NUMBER OF CARS 100
 SEATING CAPACITY 60 PASSENGERS
 NAT. PNEUMATIC CO. DOOR ENGINES
 60-CARS 4-W.H. *516-D MOTORS 50 H.P.
 600 V. 53-14 GEARING CARS 3322-3381
 40-CARS 4 G.E. *301-B3 MOTORS 50 H.P.
 600 V. 64-15 GEARING CARS 6280-6319
 2-76-F-2 BRILL TRUCKS 26" DIA. WHEELS
 G.E. COMPRESSOR TYPE CP-27-B
 O.B. FORM 5 TROLLEY BASE
 TYPE D-3 EMERGENCY VALVE
 TYPE SL-6 ENGINE VALVE
 F.C.M. AUTOMATIC CONTROL C-516
 10" DIA. BRAKE CYLINDER
 H+8 LIFE GUARD
 INT. REGISTER CO. R-10 REGISTER
 RAILWAYS UTILITY CO. CENTERS
 RAILWAYS UTILITY CO. VENTILATORS
 HALE & MILBURN CO. SEATS EXCEPT FOR CARS BUILT BY J.G. BRILL CO.

CORRECT FOR CAR SERIES 3322-3381, 6280-6319.

WEIGHT

WEIGHT OF BODY ALONE 19,250 LBS.
 TRUCKS PER PAIR 13,200 "
 MOTOR & CONTROL EQUIPMENT 10,300 "
 AIR BRAKE EQUIPMENT 1,250 "
 44,000 LBS.

33 - CARS BUILT BY J.G. BRILL CO.
 33 " " CUMMINGS CAR & COACH CO.
 34 " " CHICAGO SURFACE LINES

3322 HAS REAR EXIT TREADLE DOOR
 3341 HAS FOLDING CENTER EXIT DOORS
 6306 BODY MODIFIED TO TAKE BRILL 85-F TR

REVISION "A" 2-21-1937
 ALL CROSS SEATS
 MOVED 3" FORWARD &
 EXHAUST VENTILATORS ADDED

CHICAGO SURFACE LINES

SINGLE END, DOUBLE TRUCK, 4-MOTOR CARS (1929)

SPECIFICATION H-60

GENERAL PLAN & ELEVATION

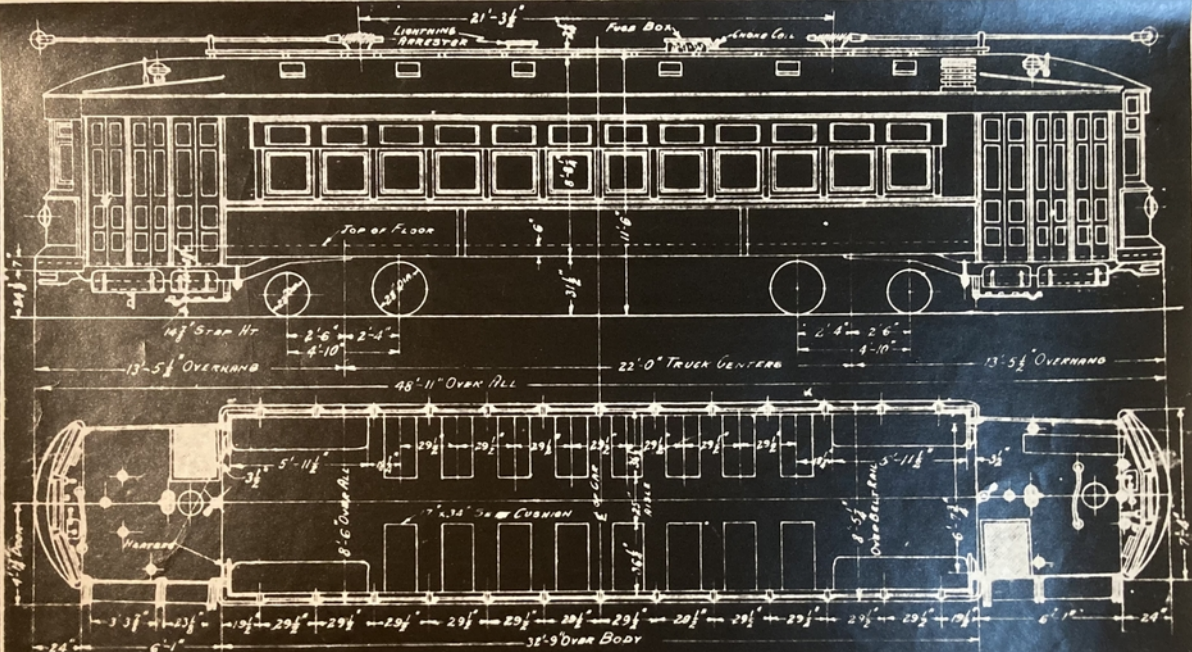
Dr. by J.N. Tr. by A.V. Approved 19.....

Checked by Chief Draftsman Electrical Engineer

Corrected by J.W. Wheeler Approved 19.....
 Engineer of Equipment

Approved 12/16/1930 Chief Engineer
 T.H. Williams Scale 3/16" = 1'-0"
 Supt. of Shops and Equipment DRG. No. 1-K-246

REVISIONS A



CORRECT FOR CAR SERIES: 3262-3321, 6240-6279

EQUIPMENT
 NUMBER OF CARS 100.
 SEATING CAPACITY 51 PASSENGERS.
 NAT. PNEUMATIC CO. DOOR ENGINES.
 67-CARS 2-G.E. 275-H MOTORS 60 H.P.
 600V. ST. 15-BEARING CAR 3262-3283, 6240-6279.
 33-CARS 2-W.M. 535-R MOTORS 60 H.P.
 600V. ST. 14-BEARING CAR 3209-3321
 2-30E-2X BRILL TRUCKS 22" AND 23" WHEELS.
 G.E. COMPRESSOR TYPE C.P. 27-B.
 U.S. 74-B TROLLEY BASE.
 TYPE E L-7 EMERGENCY VALVE.
 M-18 ENGINEER VALVE (4-FOOT OVER) (3222-3303)
 C-169-B MASTER CONTROLLER.
 CON. G.M. CO. ELECTRIC HEATERS.
 RAILWAY UTILITY CO. VENTILATORS.
 10" DIAMETER BRAKE CYLINDER.
 1 1/2" LIFE GUARDS.
 ST. LOUIS CAR CO. SEATS.
 INT. REGISTER CO. R-10 REGISTER.

WEIGHT
 WEIGHT OF BODY EQUIPPED 25,200#
 2-BRILL 30E-2X TRUCKS 11,600#
 2-G.E. 275-H MOTORS 5,000#
 TOTAL WEIGHT 41,800#
 SCALE WEIGHT

NOTE:
 22 CARS 3222-3303 CONVERTED TO ONE MAN OPERATION; EQUIPPED FOR CIRCULATING LOAD AND WITH FOOT OPERATED TYPE BRAKES SEATING CAPACITY 49 PASSENGERS.
 REVISION 79-1-18-32 J. H. NOTE CHANGED.
 REVISION B 2-24-34 J. H. TOMLINSON COUPLERS REMOVED FROM ALL CARS AND NOTE CHANGED.
 33 CARS BUILT BY J. G. BRILL COMPANY
 ST. LOUIS CAR COMPANY
 CUMMINGS

CHICAGO SURFACE LINES

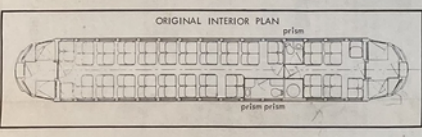
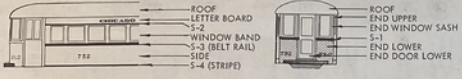
DOUBLE TRUCK 2 MOTOR CARS (1926)

SPECIFICATION K-57

GENERAL PLAN AND SIDE ELEVATION

Dr. by J. H.	Tr. by J. H.	Approved	19
Checked by	Chief Draftsman	Approved	Electrical Engineer
Correct	W. H. Whelley	Approved	19
Approved	19 26	Approved	Chief Engineer
W. H. Whelley	19 26	Scale	1" = 10'
Chief of Shops and Equipment		DRG. No.	1-K-233

REVISIONS A B



PAINTING & LETTERING

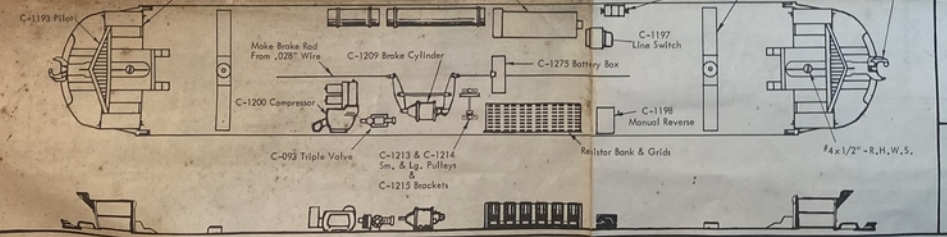
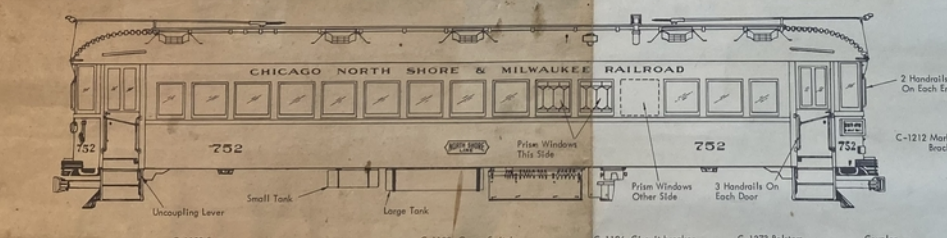
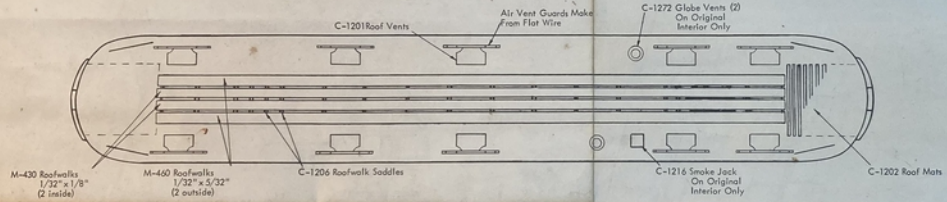
Original 1928-38	Greenliner 1929-49	1950-	Silv. Liner 1950-
Roof	Brown	Gray	Black
End, Upper	Orange	Red	Red
End, Lower	Orange	Green	Green
End Door, Upper	Maroon	Red	Red
End Door, Lower	Maroon	Sp/Gr	Red
End Window Sash	Maroon	Gray	Red
Letterboard	Maroon	Green	Red
Window Band	Orange	Gray	Red
Side	Orange	Green	Green
Side Door	Maroon	Green	Red
S-1 End Strips	Maroon	none	none
S-2 Lattic's Strips	none	Red	none
S-3 Belt Rail	Maroon	Red	Red
S-4 Side Strips	none	Red	none

PAINT COLORS: Floquil Rock Island Maroon, Grimy Black, Reefe Orange, Reefe Gray, Cobose Red, and a special green by mixing half Dark Green and half Coach Green are a very good match for the original CNS&M paints.

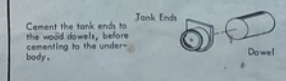
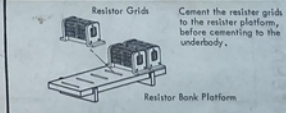
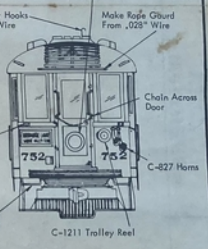
WALTHERS 4590
MILWAUKEE, WI 53218

NORTH SHORE
skokie coach
series 737-751, 752-776

FULL SIZE "O" GAUGE
PLAN SHEET Copyright 1980
80-0801



Portable headlights were removed by motormen when not required. We suggest you install headlights on power cars only.

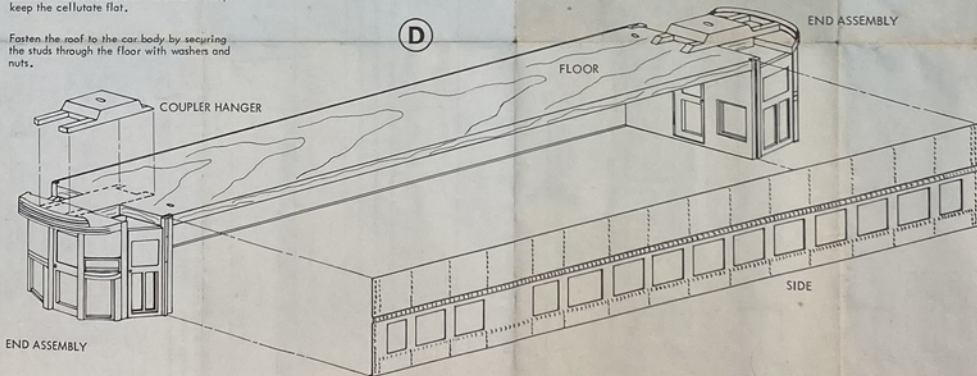
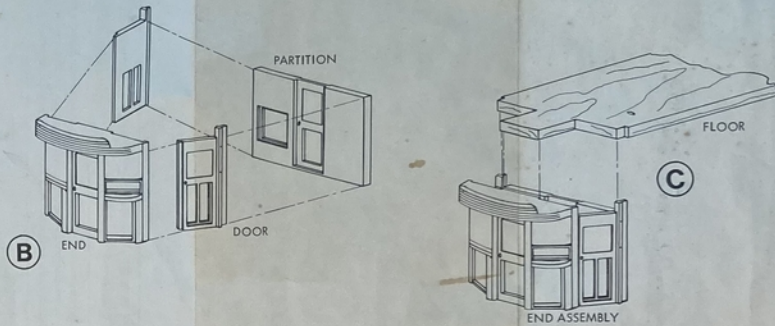
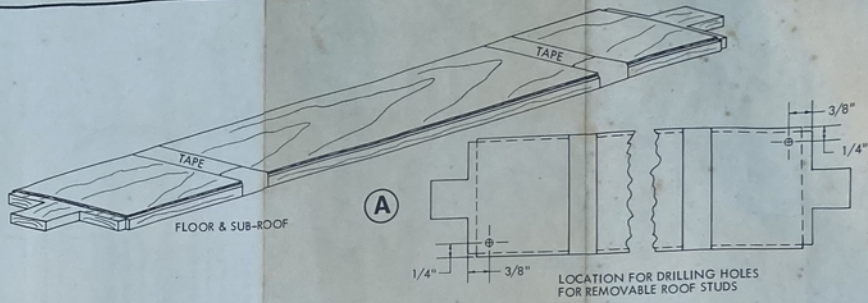


DO IT RIGHT

- Follow these suggestions.
 1. Read the instructions.
 2. Use a good cement—one made to do the job.

ASSEMBLY INSTRUCTIONS

- (A)** To locate holes for removable roof studs, tape the 1-7/16" x 2-1/32" x 10-3/4" wood sub-roof to the floor as shown. Drill two #41 holes, through both the floor and the sub-roof, as shown. Remove the tape and set the sub-roof and the floor aside until later.
- (B)** Make two end assemblies by cementing together an end, two doors and a partition. This should be done top down on a flat surface to help insure a flat roof line.
- (C)** Cement the floor to the end assemblies as shown. Using the template, cut out two floor overlays from the .020" styrene. Cement the floor overlays to the floor, one in each of the end assemblies.
- (D)** Cement the coupler hangers and sides to the floor and end assemblies as shown.
- (E)** Cement the sub-roof to the roof 1-7/16" from both ends of the roof and 7/64" from both sides of the roof. Make sure the holes in the sub-roof are in the same corners as the holes in the floor. Drill two #50 holes in the cast roof through the holes in the sub-roof. Screw and cement the removable roof studs into these holes, leaving 1-13/16" of the stud extending down, enough to go through the floor.
- (F)** Complete the car body and roof detail using the full size plans on the other side.
- (G)** Painting is best done before the roof is fastened in place. After the car sides are painted, cellulose window strips may be cemented to the inside of the sides. Use strips of cardboard between the cellulose and the sides to help keep the cellulose flat.
- (H)** Fasten the roof to the car body by securing the studs through the floor with washers and nuts.



Be sure to use a good model cement. If you aren't sure how your cement will work on wood and metal, PLEASE use Walthers Goo®. We know Goo® will do a fine job on these materials and the quick-setting contact action (follow directions on the tube) will be a big help to you. Don't take a chance with a fine model by using an inferior cement.

Cut out this template to make the floor overlay for the end assemblies.

