

# The O Gager

OCTOBER, 1950

15¢

FOREIGN 25 cents



★ NMRA Convention

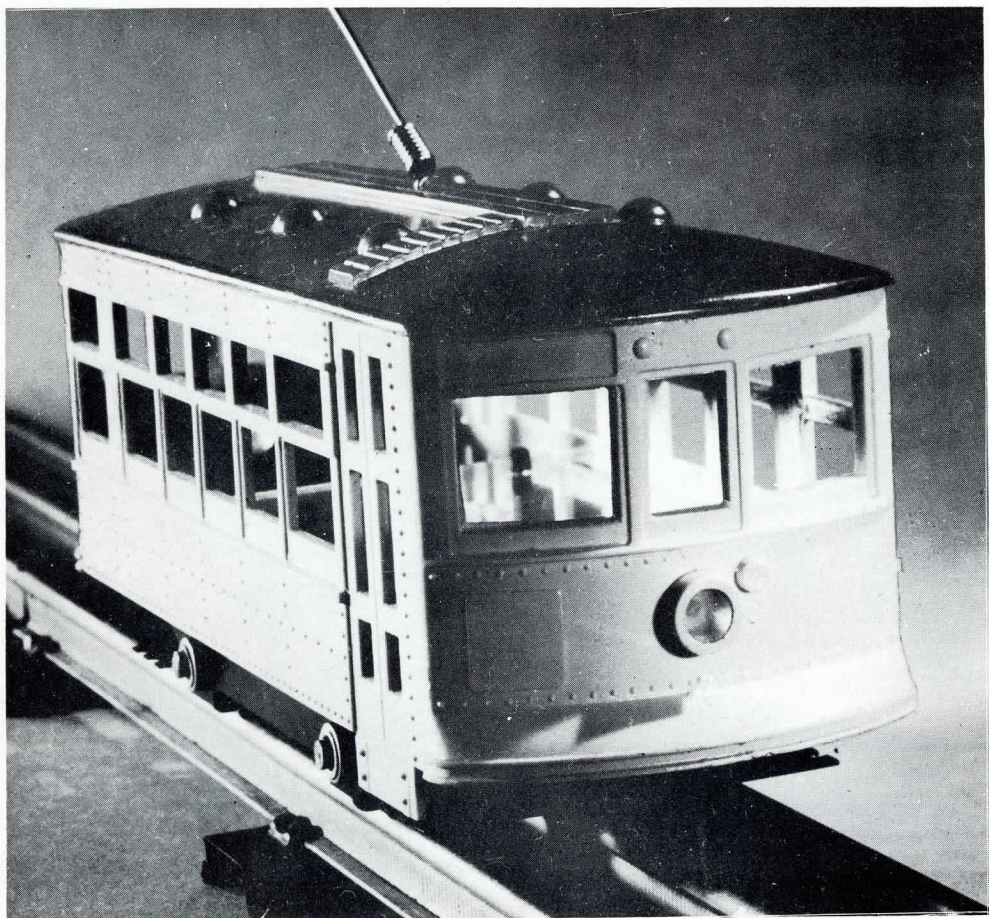
★ Milwaukee Model R.R.

★ All In 10x10

★ Semi Scale Tinplate



*for your tinplate pike.....*



## **The nicest little streetcar you could want**

It was the sensation of the New York Toy Fair. A piece of equipment everyone's always wanted and at a price everyone can afford.

The G M C Electracting Street Car operates on any three-rail O gage track, Lionel, Marx, Gargraves or American Flyer. Place it on the electrified track, give it a push to start, and away it goes!

Body and roof of red and yellow polystyrene plastic with rivet and ventilator detail cast right in for realism. Street car

Page Two

is in proportion with O gage tinplate sets. Powerful headlight to show the way. Only two moving parts, requiring minimum of maintenance.

No O gage tinplate system is complete without at least one of these realistic cars. For your urban sites, use to add effective color and realism.

Fully guaranteed. Completely assembled ready to run. Not a kit. Shipped post-paid. No C.O.D.'s. Catalog #6000 **\$3.95**

**O-GAGER**



# The O Gayer

Editor  
Joseph R. Matthews

★ ★ ★

Staff  
Employees

GENERAL MODELS CORPORATION

## EDITORIAL

Vol. I

No. VIII

### OCTOBER CONTENTS

#### Features

NMRA CONVENTION .....	4
MILWAUKEE MODEL R.R.....	6

#### Departments

SEMI SCALE TINPLATE.....	5
ALL IN 10' x 10'.....	8
2-6-6-4 INSTRUCTION BOOKLET OFFER .....	9
NMRA APPLICATION .....	9
88 CONTEST NOTE .....	9

## THE SEASON IS HERE!

Even though materials for consumer use are in critical supply, enough of them are beginning to ease up to allow us to be able to handle most of your requests. Some of you have had orders in our office for a long time due to our inability to obtain metals needed, and to the inability of our suppliers to obtain material required to fabricate certain parts for us. Much of this material has been on order for four or five months. Some of it has begun to trickle in—releasing orders for shipment to you.

Now is the time!—the time to order for the Fall model-building season. We tell you this in anticipation of further restrictions of material. Remember, the orders now going out have been filled with material on order for a long time. Future orders will be filled as promptly as our receipts of materials will allow. WE ANTICIPATE NO COMPLETE BREAKDOWN OR CUT-OFF OF MATERIAL SUPPLY!

As a side note, we mention that General Models has been criticized for allowing "Defense Work" to interfere with the manufacture of model kits. We do not seek business with those who feel this way.

These few lines are written to assure the rest of you that in NO WAY is there an overlapping of defense and model work in our plant other than in the administrative branch. Material received in our building is earmarked for either one or the other—labor and machine time is treated in the same way. Be assured that when you order from General Models, you are in no way hindering the war effort.

## COVER

A Western Pacific Freight  
At Winnemucca, Nevada

Entered as third class mail, February 1950 at the post office at Wheaton, Illinois. Published by General Models Corporation, 136 West Washington St., West Chicago, Illinois. Joseph R. Matthews, President and Treasurer . . John R. Rockwell, Secretary.

# NMRA MEETS IN MILWAUKEE

**THE Fifteenth Anniversary Convention of The National Model Railroad Association**, held in Milwaukee September First to the Fourth, was marred by tragedy that shocked the nation. An excursion on the Speedrail, planned for traction and inter-urban enthusiasts, ended in a head-on collision that was to take the lives of ten persons and injure 50 more. Occurring on Saturday morning, it was one of the first events scheduled for the meet and blanketed the remainder of the convention in a grim atmosphere.

Tales of personal heroism and fortitude became commonplace. Efforts by the committee and individual members to form an excellent liaison between hospitals, committee headquarters and families at home were heralded by all. Countless hours were spent in reporting condition of the injured by wire and telephone to friends and relatives. More than enough whole blood was offered by NMRA members fortunate enough not to be in the accident. At the time of this writing, official responsibility for the wreck had not been released.

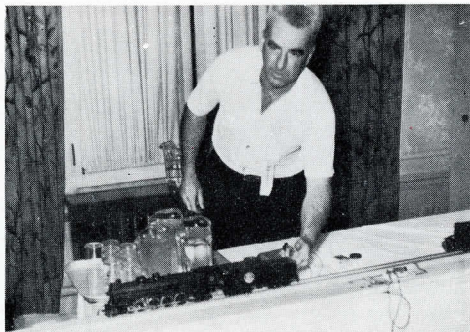
About 800 NMRA members registered at the "Round House" on the Fourth Floor of the Schroeder Hotel. A full schedule was



**Forest Fottler Operates Club Layout**

offered, including "Clinics"—demonstrations, forums and lectures; open house by several model clubs and private pikes; visits to Globe Models, W. K. Walthers, Inc., and Model Railroader; luncheons for the ladies and trips to points of interest to railroad fans.

The clinics proved very interesting to the model rails as indicated by the attendance



**Joe O'Hearn Fuels Cold Steamer**

at each. Joe O'Hearn of Milwaukee gave a convincing demonstration and explanation of the Cold Steam locomotive. Illustration shows the carbon dioxide being inserted in the tender preparatory to demonstrating the operating characteristics of this Mountain type Cold Steamer. To one who had never seen a cold steamer in operation, this demonstration was very edifying.

Another interesting forum was held by Linn H. Westcott, also of Milwaukee, on track circuits. M. English of California gave a demonstration on High Frequency Car Lighting and Don Pierce of the Boston & Albany held a round table discussion on Signal Location and Rules. These were only a few of the many very interesting lectures and discussions, ranging from carpentry and scenic effects to the NMRA Detection Circuit, available to the members.

Among the Host Clubs, the Model Railroad Club of Milwaukee was perhaps the O gage layout nearest the downtown section. Located in the old Alice Passenger Depot of the Milwaukee Road, the trackage consists of about 2000 feet of O and 300 feet of trolley. The present layout has been under construction for about 3½ years and is just reaching the scenic state. Right of way extends through three rooms, the dispatcher and power room are separate and the back shop consists of the old ticket agent's office. Traffic is controlled by block system and every attempt is made to operate according to prototype regulations. Illustrated is Forest Fottler of the Milwaukee Club at the controls.

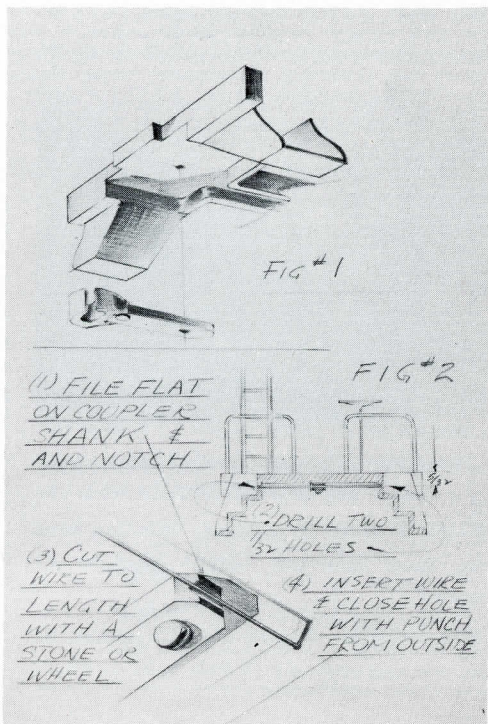
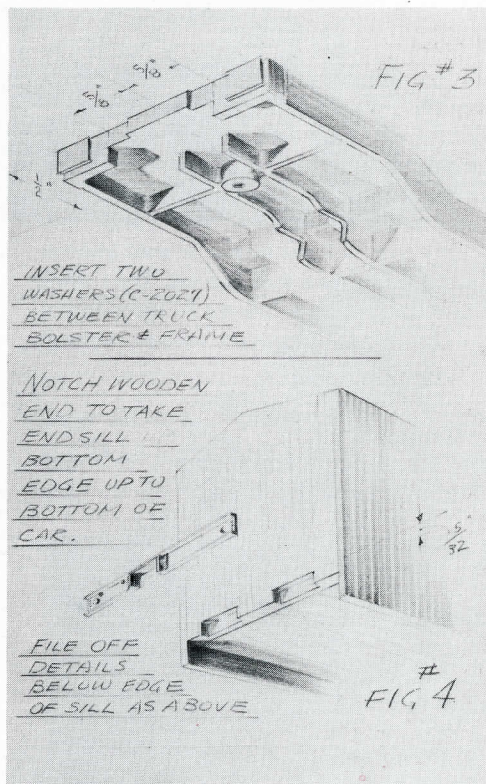


# SEMI-SCALE TINPLATE

This article features the adapting of the G.M.C. Caboose, Drop-center Flat Car, and the Wood Reefer to operate on tinplate track "O" Gauge and "027" track.

The G.M.C. Caboose adapts itself to operation on tinplate very nicely though it is not possible, within practical limits, to put Lionel automatics, or any truck with coupler attached, on the Caboose. The close-coupled trucks (trucks close together) facilitate tinplate operation, however the cast steps on both ends make it necessary to use a simple pivoted, old type G.M.C. dummy coupler. The coupler can be mounted to the frame using the hole provided for scale operation.

However, removing the metal shown with a file per figure (1) will permit the use of G.M.C. tinplate coupler mounted directly to the underframe in the hole provided. The coupling should be drilled with a #42 drill  $\frac{1}{4}$  of an inch from the rounded end of the coupler shank (clearance for #2-56 threads). Removing the metal of the underframe casting and drilling and locating the coupling as shown will permit this car to couple to Lionel operating type couplers. A centering spring may be added to the coupler to permit automatic coupling with Lionel on straight track anyway. File the end of the coupling flat and cut a piece of light piano wire to fit as shown in corner of figure (2).



The G.M.C. Drop or Depressed Center Flat Car can also be used in conjuncture with Lionel equipment by the addition of two G.M.C. Tinplate trucks and coupler and coupler adapter combinations. Add two washers (provided under the bolster mounting screw) and remove the portion of the underframe casting shown in Figure (3). Removing the metal shown in the shaded area will permit the free swing of the truck on both "O" Gauge and "027" track. Lionel operating couplers cannot be fitted to this car in any practical way.

The G.M.C. Wood Reefer Car adapts itself to tinplate trucks and coupler adapter combinations very simply. A pen knife and a small file are all the tools necessary. See Figure (4). Raise end sill till flush with bottom of car, and after bottom of coupler pocket has been removed add the two washers between the body bolster and the truck bolster. (Notch wooden under frame to clear flanges of wheels if necessary on 027 track.)

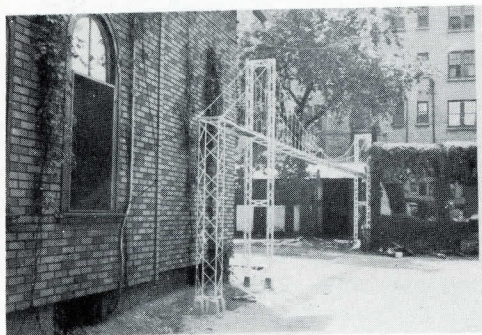


# The MILWAUKEE Model Road

## An O-GAGER Feature

With this issue, the O GAGER is instituting a feature that will appear as often as practicable. Dealing with O gage clubs and private pikes, it will bring to you ideas and suggestions that others have found to have merit. Pictures of the layouts will be included. All O gage clubs and individual rails are invited to send pictures and complete data on their layouts. Every effort will be made to return photos to contributors, but THE O GAGER cannot assume responsibility for their return.

One of the featured side trips at the recent NMRA convention in Milwaukee was the O gage layout of Val Baxter, at 551 N. 14th St. This



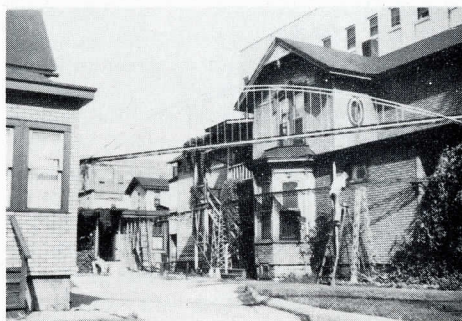
Replica of George Washington Bridge

layout runs both indoors and out and features three distinct styles of bridges—a replica of the George Washington Bridge between New York and New Jersey (8 feet 6 inches from deck to ground); a Swedish type bridge, the only railroad bridge of its type in the U. S., either actual or model (10 feet from deck to ground) and a 44 foot viaduct (9 feet from deck to ground). Connecting the three bridges are trestles with natural "S" curves for power efficiency and the optical effect of lengthening the train.

Part of the rolling stock includes 40 box cars and 40 reefers (GMC, naturally) pulled by two

GMC Mountains converted into Northerns by the substitution of 4-wheel trailing trucks.

Also featured on the layout is an Atwater-GMC A-B-B-A powered on all 32 wheels.



Swedish Type Bridge

Val tells us that due to the great publicity angle involved, one of the Milwaukee breweries is donating several hundred dollars worth of outside scenery plus a 33-foot sign atop his building depicting a diesel and passenger cars entering the



Front View Showing Trestle Leading to Swedish Bridge

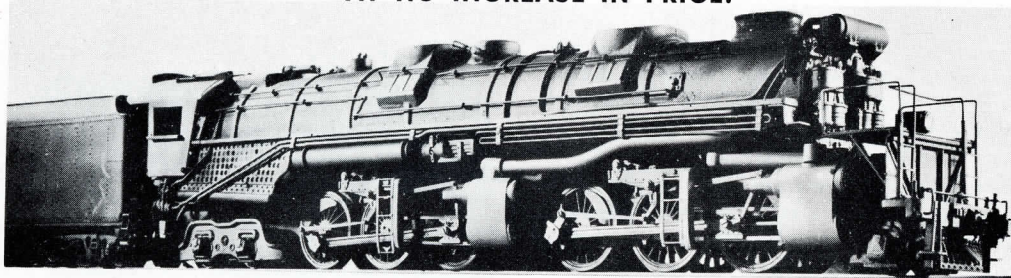
city—all of which is animated, including headlight, mars light and lighted passenger car windows.

When complete, the pike will be scenicked, signaled and approximately 30 scale miles in length.



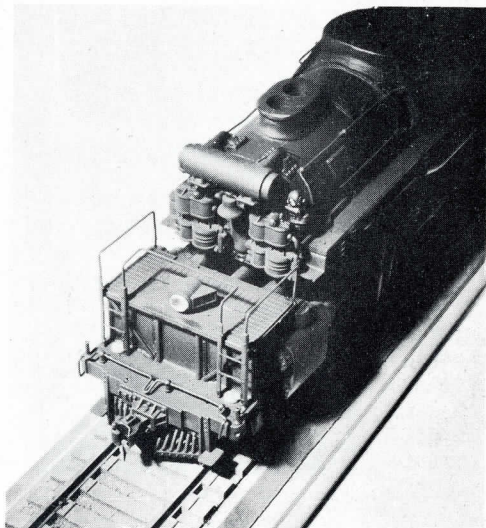
# GMC 2-6-6-4 ARTICULATED

AT NO INCREASE IN PRICE!



The largest and newest locomotive in the GMC line. No pains have been spared to bring to the model railroader the finest, most carefully engineered kit extant. Most of drilling already completed — accessories drilled and tapped. Assembled locomotive operates on minimum radius curves of 44"; with outside journal of pilot truck removed, curves of 36" can be negotiated with normal boiler overhang. Features popular GMC Free-Running gear box for powerful, quiet operation. Overall length (locomotive and tender) 29½"; locomotive length 19"; height 3⅞"; width 3"; weight 11¼ lbs.; draw bar pull 42.5 ounces; average speed with maximum load (12v) 75 miles per hour.

Kit contains super-detailed boiler cast in brass with many accessories included in casting; pre-formed cab; gear box, main frames, 70" cadmium-plated drivers, cast smoke box front and accessories; brass articulated steam pipes; pilot truck kit; 4-wheel trailing truck; rods; crossheads; knuckles; #200 series motor, (AC-DC or DC — specify choice) and motor drive accessories; valve gear kits, cylinders, smoke deflector, window sills, air tanks, firebox backhead with detail cast on; stoker detail; horns; compressors; generator; pop valve; muffler; marker lights, etc. See Page 9 for Unusual Offer. Not designed for tinplate operation.



Available on GMC Time Payment Plan. \$50.00 down and \$27.50 for three months.

**Complete kit with tender**

**Catalog #1800 .....\$125.00**

## GENERAL MODELS CORPORATION

DEPT. 10-50

P.O. BOX 66

WHEATON, ILLINOIS

Date.....

Gentlemen:

Check

deposit

Enclosed is  Money Order in the amount of \$..... as my  payment in full

on the GMC 2-6-6-4 Articulated. Please acknowledge receipt of this order, and advise me of my order number. I should like to have a  AC-DC motor.

DC

Name .....

Address .....

City..... State.....



# ALL IN 10' x 10'

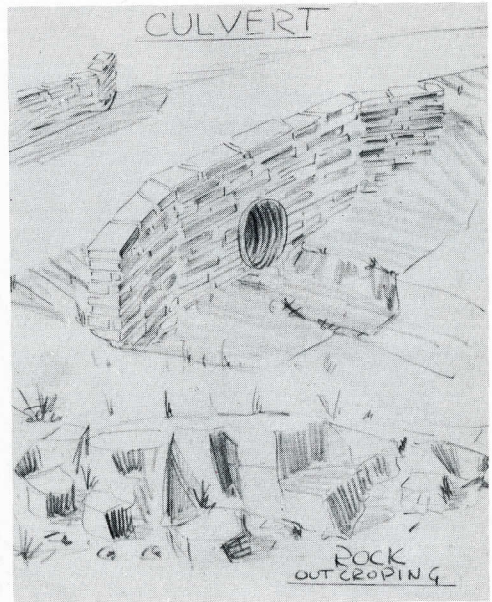
The plaster work begins, first, second and third coats—with the details on scenery beginning to show up, and a few beginning hints on painting.

The mountain frames are ready, the covering materials, screening or fabric are now stretched over the frames and tacked to the base and to the frames to create the basic contour. To create uneven ridges first nail down the basic shape, then nail a second layer loosely along the ridge stuffing papers or blocks of wood between the layers to achieve the uneven or broken ridges.

To create interesting shapes on the sides of the slopes, gather up small tufts of screening and staple them together. This is where your imagination can run wild. Keep in mind drainage on these slopes and gullies and keep them logical.

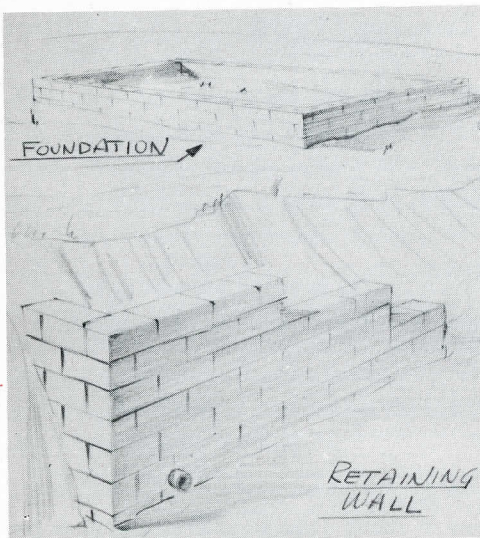
Now for the first application of plaster, or better yet, plaster with a little wood fiber in it as it is available this way too. Keep the first batch small (coffee can) and thin so it can be applied with an old brush. The first coat is only to firm or beef up the screening. Work with small areas and as one batch starts to set, wash out brush and clean out tin before it sets. Allow to dry overnight.

The second coat can be applied with a putty knife or spatula. This coat is for the mass or basic of the various geological masses that are to be modeled. Work from a photograph of your chosen ground. This coat should dry until large masses of plaster are dry.



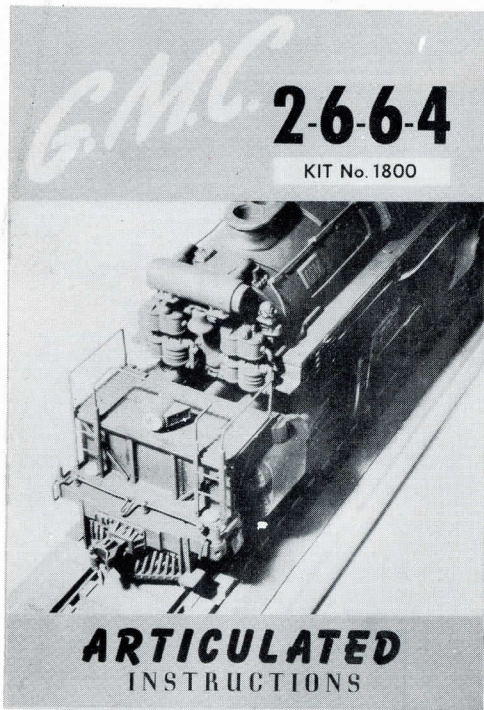
The third coat is the detail coat. Work with a fairly thick mixture but in a small amount, as you will be spending more time on each unit or section, and large amounts of plaster would set up too soon. Plaster right up to your structures and model concrete foundation footings and bases in as much detail as you can, showing form joints and finish joints or expansion joints.

In some instances you may want to press some foliage down into the soft plaster. Tear small bunches of lycopodium off the stems and bunch them up and squeeze them into the soft plaster to simulate a small bushy undergrowth or a single group of bushes. A suggestion on coloring your bushes—mix up water colors, tempera or poster colors to the shade you desire and dip the lycopodium in it and set aside to dry. Shake well, however, to remove excess paint. A dusty gray green is very good. A very subtle touch on your painting is to use the illusion of nature to help create distance—graying colors on everything as you get farther from the viewing point. That is, use natural colors in the foreground, but as you use this same color on objects that are farther away (in the mountains) gray them slightly to achieve the haze or distance effect. The same applies to the painting of the plaster mountains. As you paint up toward the ridges, gray your colors making each succeeding ridge approach the purple gray haze of distance.





## ARTICULATED INSTRUCTIONS NOW AVAILABLE



Due to numerous requests for photos and parts data for the Articulated 2-6-6-4 Locomotive, GMC is making available to hobbyists the complete instruction booklet containing numerous photos, exploded construction drawings, parts lists and other valuable data. Containing twelve pages in format similar to The O Gager, the Articulated Instruction Booklet is available for 75c. Enclosed in the booklet will be a coupon worth \$5.00 toward the purchase of a G M C 2-6-6-4 Articulated if ordered before December 31st, 1950. Naturally, there are only a limited number of these booklets on hand, so they will be distributed on a first come—first served basis. Get yours now.

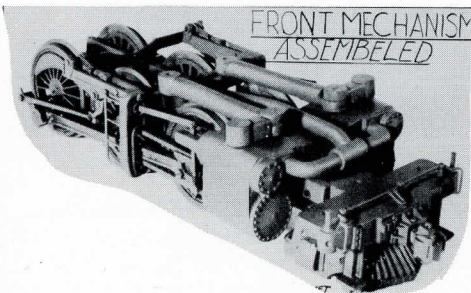


Photo showing front mechanism assembled. Typical of photos in Instruction Booklet.

October, 1950

## JOIN THE N.M.R.A.

### Model Railroadng is More Fun

WHEN YOU BELONG TO THE N. M. R. A.



Sure I want to be a member of the N. M. R. A., join in the fun and help improve the Model Railroad hobby. Here's my application. Please send me my membership card and bill me for the calendar year, as I have indicated below.

I understand that membership not only entitles me to vote on and help improve standards for model railroad products, but also puts me on the list for the monthly N. M. R. A. bulletin, the Year book (which will allow me to find other model rails wherever I may be), data sheets and other literature from time to time, and also give me the priceless privilege of attending N. M. R. A. Regional meetings and the National Convention.

Signed \_\_\_\_\_

Were You Ever a Member Before? \_\_\_\_\_ When? \_\_\_\_\_

Name \_\_\_\_\_

Street \_\_\_\_\_

City \_\_\_\_\_ Zone \_\_\_\_\_ State \_\_\_\_\_

Date \_\_\_\_\_ Age \_\_\_\_\_ Gage \_\_\_\_\_

Home Layout

Yes  No

2 Rail

3 Rail

Traction

AC  DC

Membership Desired

REGULAR MEMBER

SUSTAINING MEMBER

PAID UP LIFE

NON-PAYMENT

Fill out the above (or send in all information requested on a separate piece of paper) and send in with your membership fee—\$2.00 for regular, \$10.00 for sustaining, \$50.00 for paid-up life or \$10.00 installment on paid-up life to: National Model Railroad Association, Inc., P.O. Box 1238, Station "C", Canton 8, Ohio. The next regional meeting will be in Toledo, Ohio on October 14 and 15. Headquarters will be at the Fort Meigs Hotel. This will be a joint meeting of the Midwest and North Central Regions. The host clubs have planned a very full and interesting program for the two days.

## 88 CONTEST NOTES

Due to an overwhelming number of entries received for the GM 88 Contest, it was impossible to judge them in time for this issue of the O-Gager. Watch for the list of winners in the November O-Gager.



## Scale Model Train Sets

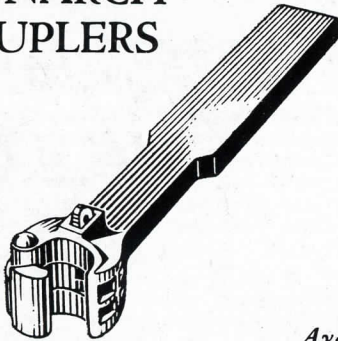
If you've been wondering just how to start scale model railroading, here's the answer. GMC offers you a choice of three train sets that include, Locomotive, Steel Box Car, Wood Reefer, Drop Center Flat Car and Caboose. Also a complete circle of 36" radius of Tru-Scale roadbed with four 18" straight sections. Pre-cut rail, spike and rail joiners are all apart of each set. Available at prices listed below or on the new GMC Time Payment Plan.

- 1000 HP Diesel Switcher Set    \$49.50
- F-3 Road Diesel Set                \$59.50
- \$19.80 down—\$10.90 per mo. (3 mos.)
- \$23.80 down—\$13.10 per mo. (3 mos.)
- Ten-Wheeler Set                    \$65.00
- \$26.00 down—\$14.30 per mo. (3 mos.)



**PLEASE NOTE:** Through error, the September issue of The O-Gager stated that Bob Peare Tinplate Switches are available through GMC Sales and Service. This is incorrect. These switches must be ordered direct from Bob Peare Engineering Corporation, 222 West First Street, Clifton, New Jersey.

## MONARCH COUPLERS



Available  
Through

**G.M.C. SALES & SERVICE**

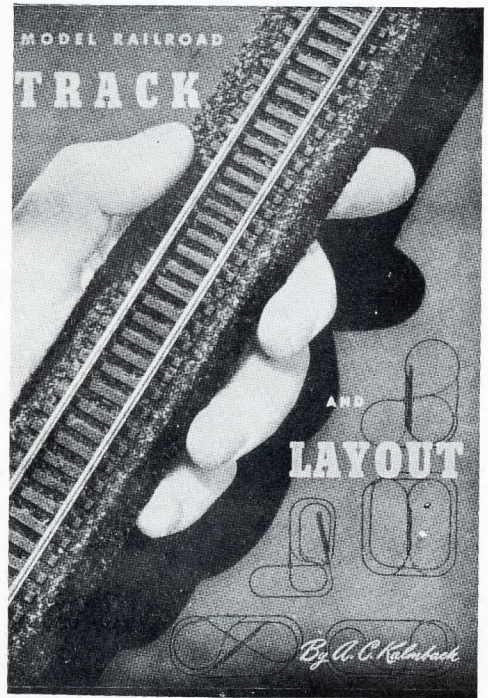
Completely assembled. Operating spring latch keeps couplers locked until pins are pulled then jaws spring open!

### Couplers

- Top operated—automatic ..... pr. 98c
- Bottom operated—automatic ..... pr. 98c
- Ramp operated—automatic ..... pr. 98c
- Non-working type ..... pr. 25c

**Monarch Model Supplies**  
6888 N. Tony Ave.      Chicago 30, Ill.

Page Ten



Here is the book that every model railroader should have. If you are new to the hobby you will find a wealth of information to help you plan your pike. You will find explanations of terms as well as suggested layouts. If you're an old hand at the hobby, you'll find the source for new ideas and improvements. The book has 104 pages, 33 photographs and 142 drawings. Because of its completeness it is acclaimed "The Leading Reference Book on Planning and Constructing Model Railroad Layouts."

AVAILABLE THROUGH

**G.M.C. SALES & SERVICE**

POSTPAID  
Only \$2.00

Published by the Kalmbach Publishing Co.  
Milwaukee, Wisconsin

**O-GAGER**

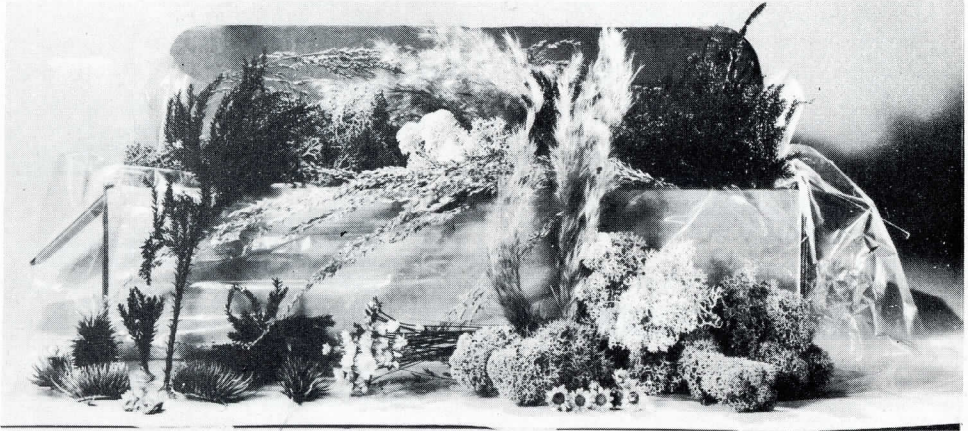


# A BASIC FOLIAGE MATERIAL KIT

Illustrated below is the new GMC Basic Foliage Material Kit. It includes a generous supply of famous Norwegian Lichen, Lycopodium and miniature flowers. These are the same materials used in GMC's famous portable display layout and are described in this issue's article "And All in 10' x 10'." You can use them to make trees, bushes, cactus, small plants and other foliage. They come in assorted shades of green, brown and the natural moss. It is your chance to add naturalness and realism to your pike, either scale or tinplate.

Try this one kit and we know you'll want more.

**\$1.25**

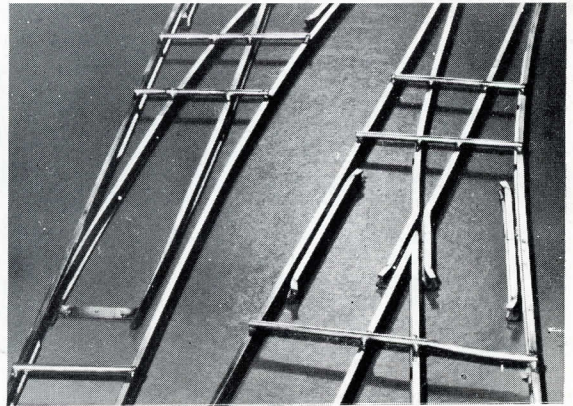


## MATCO SWITCHES

**G.M.C. SALES & SERVICE**

Now to help you with all of your switch problems, General Models offers you 4's, 6's, 8's Wyes and "Stubbies," all at low prices. Strapped on the top for easy mounting on any surface or tie pattern. Straps may be removed with soldering iron or with pliers after switch is spiked in place.

You'll want many of the "Stubbies" for your yards. They're smaller than a number 4, but have a 48" radius to take the big jobs.



Stubbies (right or left) ..... **\$1.95**  
 No. 4 Switch (right or left) ..... **2.25**  
 No. 6 Switch (right or left) ..... **2.30**

No. 6 Wye ..... **\$2.50**  
 No. 8 (right or left) ..... **2.75**  
 (All made with .172 Brass Rail)

RAIL Standard .172 brass rail in 3 ft. lengths. Shipments are f.o.b. Wheaton, Ill.

Per 99 ft. .... **\$5.50**

Spikes: Blue steel spikes, serrated for holding fast. Proper length for use with Tru-Scale.

Per oz. .... **\$0.50**  
 Quarter lb. boxes ..... **1.50**



Available Through

**G.M.C. SALES & SERVICE**



**CURVED SECTIONS**

Circle	Price	Circle	
36 Radius	\$ 5.95	48 Radius	\$ 7.55
38 Radius	5.98	52 Radius	8.08
40 Radius	6.28	56 Radius	8.80
42 Radius	6.60	60 Radius	9.43
44 Radius	6.90	68 Radius	10.68
46 Radius	7.23	72 Radius	11.33

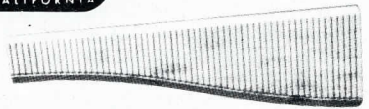
**SUPERFLEX SECTIONS**

Catalog #5015, per foot ..... \$0.30



**STRAIGHT SECTIONS**

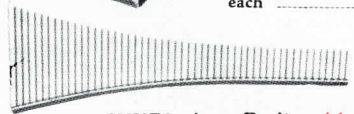
2 ft. lengths, Catalog #5001, per foot ..... \$0.21  
 3 ft. lengths, Catalog #5000, per foot ..... \$0.23



No. 4, Catalog #5018(R), 5019(L) each ..... \$1.15  
 No. 6, Catalog #5020(R), 5021(L) each ..... 1.20  
 No. 8, Catalog #5022(R), 5023(L) each ..... 1.25  
 No. 6, Mounted, Catalog #5025(R), #5026(L) each ..... 5.75



**BRIDGE STOCK**  
 Catalog #5016, per foot ..... \$0.50  
 Catalog #5017, each ..... \$1.15



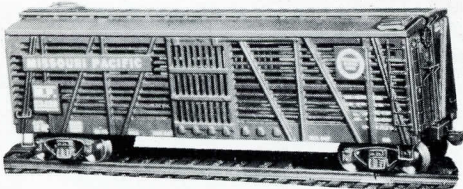
**WYES Any Radius \$1.15**

**CROSSOVER BLOCKS**

No. 6 Catalog #5024, each ..... \$1.30  
 No. 8 Catalog #5030, each ..... 1.40

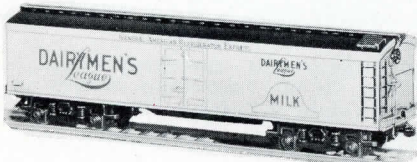


# SCALE-CRAFT 0 GAGE



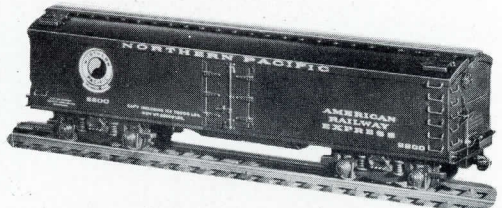
Stock Car for carrying livestock to the packing centers of the nation. Cast aluminum sides and ends. Wood roofs and floors. Die-cast under-frame and stamped metal hardware. Choice of decals.

OF-135—Stock Car Kit ..... \$6.50



Milk Tank Car used essentially as a passenger train unit. Lading carried in two large glass-lined tanks with refrigerator unit between them, eliminating need of ice hatches. Rides on 4 wheel passenger trucks and carries signal hose. Choice of decals.

OP-113—Milk Tank Car Kit ..... \$7.95



Express Refrigerator Car used for rushing perishables to destination at passenger train speeds. Design features accurately machined wooden roofs, sides, ends, floors and metal doors. Working buffer at each end of car. 4-wheel roller bearing passenger trucks. Choice of decals.

OP-112—Passenger Express Refrigerator Car Kit ..... \$7.95

Paint, Decalcomanias and Trucks  
 Are Included in All Scale-Craft Kits

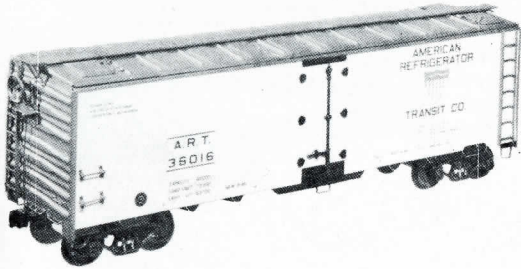
## SCALE-CRAFT & COMPANY

ROUND LAKE, ILLINOIS



# STEEL REEFERS

These new features  
make Athearn Reefers an  
**OUTSTANDING VALUE**



- All metal exterior construction
- Blow-Know metal roof walks
- Sprung trucks and draft gear
- Improved dreadnaught ends
- Pre-assembled spot welded under-frame, (fastened to wooden floor member)
- Working ice hatches
- Accurate base point colors and rivets
- Highly detailed latch bar and door hinges
- Amazingly realistic processing of lettering and heralds
- New, complete easy-reading construction drawings

You'll be rewarded many times their cost in your satisfaction of having the finest steel reefers on any pike!

AVAILABLE  
THROUGH

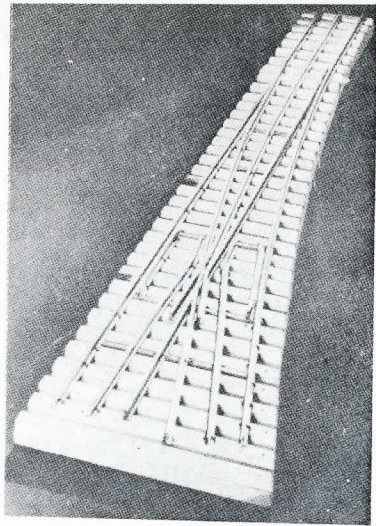
**G.M.C. SALES & SERVICE**

Available in all these sides:

P. F. E., Orange	\$5.75
A. R. T., M. P. Wabash	5.75
N. P. Orange	5.75
A. R. T. Plain	5.75
P. F. E. Aluminum	\$6.25 per kit



11129 VAN BUREN AVE.,  
LOS ANGELES 44, CAL.



48 Inch Radius Inside 3rd Rail Switch

## BOB PEARE'S

### TINPLATE SWITCHES

At long last a great need is filled for those model railroaders who use Lionel or Gargraves track. The Bob Peare Engineering Corp. now offers kits to fill this need. Kits that include: ties, fish plates rail, spikes and a template with instructions. Particularly advantageous is the fact that these switches have a 48" radius which will permit greater speed without tipping. Get several today.

48 in. radius switch R. or L.	\$ 4.50
48 in. radius Wye	4.50
Single Crossover Kit, 4 in. track centers	9.75
Scissors Switch Kit, 60 in. radius	19.50

### BUILT UP CROSSINGS

To match Lionel and Gargraves Track

90 degree crossing	\$6.00
45 degree crossing	6.50
60 degree crossing	7.00
30 degree crossing	8.50

### BOB PEARE ENGINEERING CORP.

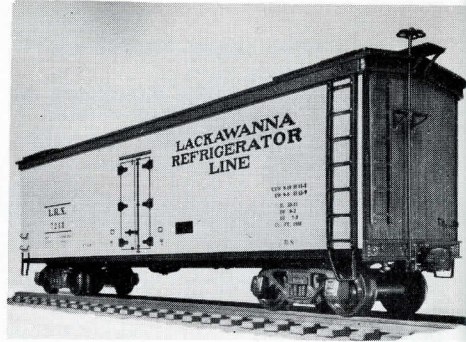
222 W. First Street Clifton, N. J.



# REEFERS

Pacific Fruit Express  
 Western Fruit Express  
 Lackawanna Reefer  
 Dry Ice Reefer  
 Rath's Black Hawk Ham  
 Morrell's Pride  
 Fruit Grower's Express  
 Burlington Reefer

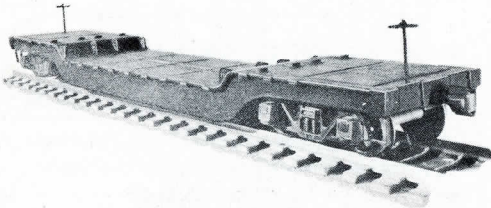
(Catalog #3560)  
 (Catalog #3561)  
 (Catalog #3562)  
 (Catalog #3563)  
 (Catalog #3564)  
 (Catalog #3565)  
 (Catalog #3566)  
 (Catalog #3567)



Just like the prototype—scored wood sides finished in authentic, durable "Photo-Color." Priced right at \$3.40 per kit, less trucks. (Catalog #3565—\$3.50). Scale trucks—\$1.10 pair, Tinplate trucks—\$1.25 pair. Specify scale or tinplate.

## DROP CENTER FLAT CAR

This sturdy load hauler will add variety to your pike. Fine Adams sand casting, complete rivet detail. Catalog #3611, less trucks \$3.50. Specify scale or tinplate.



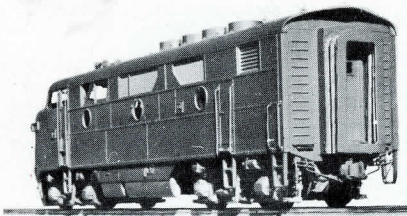
## 40 FOOT STEEL BOX CARS with "Photo-Color" sides

- |   |  |
|---|--|
| Pacemaker Box Car<br>Catalog #3620 \$3.80     | Lackawanna Box Car<br>Catalog #3627 \$3.50           |
| Union Pacific Box Car<br>Catalog #3621 \$3.50 | C & O (Old Style)<br>Box Car<br>Catalog #3628 \$3.50 |
| B & O (Red) Box Car<br>Catalog #3622 \$3.50   | Nickel Plate Box Car<br>Catalog #3629 \$3.50         |
| GM & O Box Car<br>Catalog #3623 \$3.50        | NY NH & H Box Car<br>Catalog #3630 \$3.50            |
| Pennsylvania Box Car<br>Catalog #3624 \$3.50  | Can. Pac. Box Car<br>Catalog #3631 \$3.50            |
| Burlington Box Car<br>Catalog #3625 \$3.50    | B & O Sent. Box Car<br>Catalog #3632 \$3.95          |
| Seaboard Box Car<br>Catalog #3626 \$3.50      | Roberval Sag. Box Car<br>Catalog #3633 \$3.65        |
| GMC Special Box Car<br>Catalog #3635 \$3.50   | C & O (New Style)<br>Box Car<br>Catalog #3634 \$3.50 |



All kits less trucks. Specify scale or tinplate.





### EMD DIESEL SWITCHER

The most popular of all postwar locomotives is GMC's 1000 hp. Diesel Switcher. Now available at now low prices.

Scale (4 wheels powered) Cat. #40	\$23.50
Tinplate (4 wheels powered) Cat. #42	24.50
Scale (8 wheels powered) Cat. #41	29.95
Tinplate (8 wheels powered) Cat. #43	30.95

### POWER TRANSMISSION UNITS



GMC Power and Auxiliary transmission units are designed for 1/4 to 2 1/2 in. wheel center trucks. Units include motor and mounting accessories. (Auxiliary transmission units are less motor.)

Scale (1" motor) Cat. #1425	\$13.75
Scale (5/8" motor) Cat. #1440	13.75
Tinplate (1" motor) Cat. #1427	14.75
Tinplate (5/8" motor) Cat. #1442	14.75

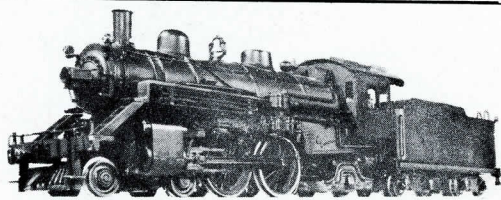
### AUXILIARY UNITS

Scale—to be used with 1425, Cat. #1426	\$8.00
Scale—to be used with 1440, Cat. #1441	8.00
Tinplate—to be used with 1427, Cat. #1427	8.00
Tinplate—to be used with 1442, Cat. #1443	8.00

### ATLANTIC 4-4-2

Complete Kit (Cat. No. 5)	\$44.50
Mechanism Kit (Cat. No. 6)	\$25.50
Boiler Kit (Cat. No. 7)	13.50
Tender Kit (Cat. No. 4)	7.75

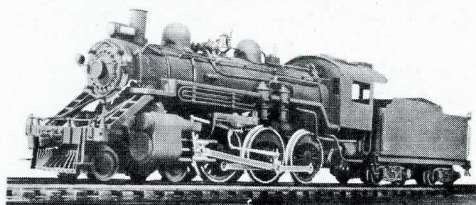
Available on GMC Time Payment Plan with \$17.80 down and \$9.80 per mo. (3 mos.).



### TEN WHEELER 4-6-0

Complete Kit (Cat. No. 1)	\$42.50
Mechanism Kit (Cat. No. 2)	25.00
Boiler Kit (Cat. No. 3)	13.00
Tender Kit (Cat. No. 4)	7.75

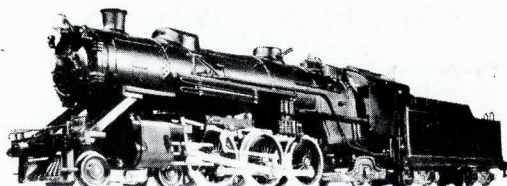
Available on GMC Time Payment Plan with \$17.00 down and \$9.35 per mo. (3 mos.).



### PACIFIC 4-6-2

Complete Kit (Cat. No. 10)	\$55.00
Mechanism Kit (Cat. No. 11)	28.00
Boiler Kit (Cat. No. 12)	17.50
Tender Kit (Cat. No. 13)	10.95

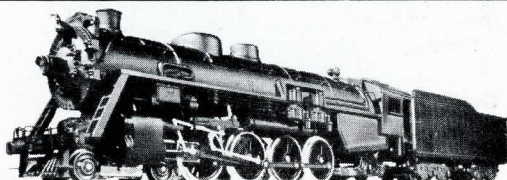
Available on GMC Time Payment Plan with \$22.00 down and \$12.10 per mo. (3 mos.).



### MOUNTAIN 4-8-2

Complete Kit (Cat. No. 17)	\$72.50
Mechanism Kit (Cat. No. 18)	37.00
Boiler Kit (Cat. No. 19)	25.00
Tender Kit (Cat. No. 20)	17.50

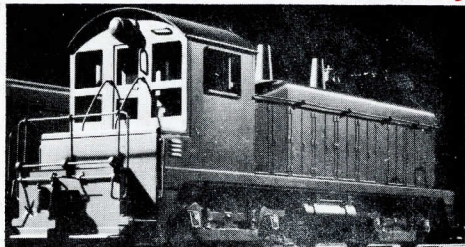
Available on GMC Time Payment Plan with \$29.00 down and \$15.95 per mo. (3 mos.).



### ATWATER F-3 A DIESEL UNIT

Designed for operation on either scale or tinplate, this is the must loco for all pikes. And only with the ATWATER F-3 do you get perfect scale.

F-3 A Unit: unpowered, scale (Cat. #1000)	\$25.75
F-3 A Unit: powered, scale (Cat. #1015)	38.00
F-3 A Unit: unpowered, tinplate (Cat. #1002)	25.75
F-3 A Unit: powered, tinplate (Cat. #1016)	39.50





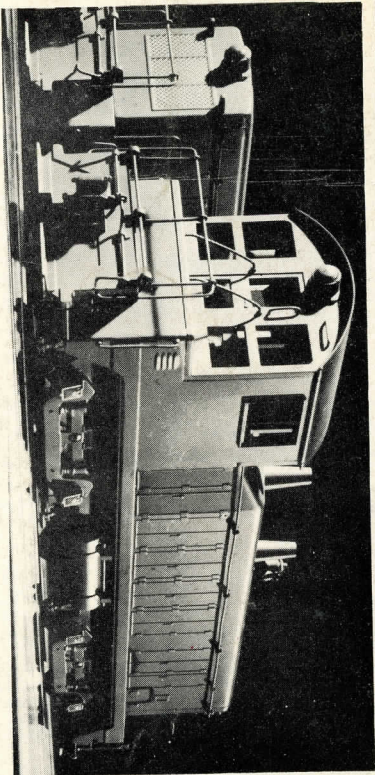
# GENERAL MODELS CORPORATION

*"Transportation in Miniature"*



P.O. BOX 66

WHEATON, ILLINOIS



1000 HP ElectroMotive Diesel Switcher, Workhorse of the Yards.  
A faithful reproduction of this famous switcher for YOUR plke  
for only **\$9.95.**

## GENERAL MODELS CORPORATION

DEPT. 0-50

BOX 66, WHEATON, ILLINOIS

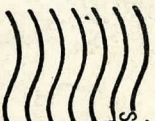
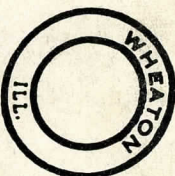
Gentlemen: Send me ..... unpowered Diesel Switchers at \$9.95 each.  
(Two for \$18.50) Scale  Timpplate

Name .....

Street .....

City ..... Zone ..... State .....

Enclose find check  Money Order



SEC. 34, 66 P. L. 48  
U. S. POSTAGE  
PAID  
Permit No. 557

POSTMASTER—If addressee has moved and new address is known, notify sender on Form 3547 postage for which is guaranteed.

Third Class Matter  
Postmaster: This parcel may be opened for postal inspection if necessary.

RETURN POSTAGE GUARANTEED