

## STOCK AVAILABILITY

### February

AS YOU MAY KNOW WE HAVE BEEN HAVING SOME DIFFICULTY KEEPING SOME ITEMS IN STOCK. AS OF February 19, 1994 THERE IS **NO STOCK** ON THE FOLLOWING ITEMS:

**01 ILLUSTRATED O & HO CATALOG**  
**CS24 POLE BASE, LARGE**  
**CS60 NATIONAL BRAKE COMPRESSOR**  
**CS64 PCC CROSS SEATS**  
**CS77 HIGHBACK PLUSH SEATS (See note below)**  
**CS130 MOTORMAN, TWO HANDS EXTENDED**  
**CS132 MOTORMAN, Painted**  
**CS145 NORTH SHORE COUPLER SHANK**  
**CS183 EL CAR CROSS SEAT W/ARMREST**  
**CS201 ST LOUIS # 50 SIDEFAME**  
**CS216 39E2 BRILL SIDEFAMES**  
**CS238 CLARK B2 SIDEFAMES**  
**HCS20 HO PCC CROSS SEATS**  
**MT20 MAGIC CARPET DRIVES and MT16 TRUCKS\***  
**PB118 .018 X 100' PHOZ. BRONZE OVERHEAD WIRE**  
**PB120 .020 X 100' PHOZ. BRONZE OVERHEAD WIRE**

THE FOLLOWING ITEMS ARE **LOW STOCK** ITEMS AND YOU CAN EXPECT SPOT SHORTAGES OF THESE:

**CB10 RADIAL COUPLERS**  
**CS12 END BENCH SEATS**  
**CS240 OSGOOD BRADLEY SIDEFAMES**

The lack of CS77 and HCS20 seats is preventing us from shipping many of the finishing kits that require this type of seat. An update on the CS77 seat is more bad news. The caster has rejected the pattern as too difficult to cast. It tears the mold and only produces short mold runs. We no must re-do the pattern by removing the arm-rest and make it a separate casting. This will add at least a 60 day delay in getting more of these seats. On the good news side of things casting delivery has increased and there is a good chance that most of the missing castings will be in stock within the next few months.. We apologize for any inconvenience these shortages may cause; we assure you that we are doing our best to keep inventory levels high enough to meet the ever increasing demand for our products we are experiencing this past year. To help us better serve your needs we are at long last entering the computer age and should be on line by early Spring of 1994.

O Scale Car delivery is very slow, and you should plan on at least a sixteen week delivery schedule. HO Cars are about one year behind schedule. We hope to have some HO Cars in stock before the end of February.. **HOWEVER WE HAVE QUITE A NUMBER OF HO SCALE CARS ON BACKORDER AND DELIVERY PRIORITY WILL BE GIVEN TO THOSE ORDERS WE HAVE ON HAND SO PLEASE EXPECT ADDITIONAL DELAYS.** The major cause of delay is the tremendous demand for O Scale power trucks we have had this past year. **TRUCK DELIVERY AS OF THIS DATE IS A MINIMUM OF 7 WEEKS.**

The rest of our inventory is in good supply including trolley poles, and brass castings. With the aid of our computer we do plan to update and re-do our long out of stock catalog. If all goes well work will begin this summer. The price sheets you now receive were made using our trusty Mac; now if we could only teach it to make car bodies!!

\*THE LACK OF 1220 MOTORS HAS PLAGUED NWSL. MOTOR DELIVERY HAS BEEN PROMISED FOR MID OR LATE JANUARY (21st) WITH DRIVES BECOMING AVAILABLE BY BY LATE FEBRUARY. As of this date no 1220 motors have arrived at NWSL and no MAGIC CARPETS have been received at Q-Car (OUR BACKORDER DATES TO JUNE 1993!)

**Q-Car Company, Inc.**

19 Feb 1994

# GENERAL INFORMATION

## | ORDERING |

### TO ORDER FROM Q-CAR:

THE USE OF ORDER FORMS IS NOT REQUIRED TO ORDER DIRECT. JUST BE CERTAIN YOUR NAME AND ADDRESS ARE CLEARLY WRITTEN ON YOUR ORDER. DO NOT RELY ON THE RETURN ADDRESS ON YOUR ENVELOPE OR CHECK AS MOST OFTEN THESE WILL BECOME SEPARATED. PLEASE WRITE LEGIBLY; IF WE CAN'T READ OR UNDERSTAND YOUR WRITING WE CAN'T SHIP YOUR ORDER AND HAVE NO WAY TO CONTACT YOU. IF YOU ARE A PENNSYLVANIA RESIDENT WE ARE OBLIGATED TO COLLECT 6% SALES TAX. THE SHIPPING AND HANDLING CHARGE OF \$4.00 MUST ALSO BE INCLUDED EXCEPT ON CATALOG ORDERS; THESE ARE SHIPPED POST PAID.

ALL Q-CAR PRODUCTS ARE GUARANTEED AND WE WILL SERVICE AND REPAIR ANYTHING FOUND TO BE DEFECTIVE IN WORKMANSHIP OR MATERIALS. HOWEVER, WE ARE NOT OBLIGATED TO REPAIR ITEMS DAMAGED IN SHIPPING. IF YOU RECEIVE MERCHANDISE WHICH IS DAMAGED IN TRANSIT CONTACT YOUR NEAREST UNITED PARCEL SERVICE REPRESENTATIVE FOR INSTRUCTIONS ON HOW TO HANDLE YOUR CLAIM. IN NO CASE SHOULD THE ITEM BE RETURNED WITHOUT FIRST CONTACTING US. IF YOU HAVE ANY DIFFICULTY WITH YOUR CLAIM WE WILL HELP YOU PROCESS IT. RETURNING ITEMS DAMAGED IN SHIPPING UNLESS YOU ARE DIRECTED TO DO SO BY EITHER UPS OR Q-CAR WILL NEGATE ANY DAMAGE CLAIM WE MAY HAVE WITH THE CARRIER.

SHOULD ANY PRODUCT NEED SERVICE WE WILL REPAIR OR REPLACE ANYTHING FOUND DEFECTIVE IN WORKMANSHIP AT NO CHARGE. WE WILL PAY ALL SHIPPING COSTS. IF THE DAMAGE IS THE RESULT OF ACCIDENT, MIS-USE OR ABUSE WE WILL REPAIR THE ITEM FOR A NOMINAL CHARGE AND YOU ARE RESPONSIBLE FOR ALL SHIPPING COSTS. SMALL ITEMS, SUCH AS FRAGILE WHITE METAL PARTS WILL BE REPLACED AT NO CHARGE REGARDLESS OF THE CAUSE OF DAMAGE. TO OBTAIN SERVICE WE ASK THAT YOU WRITE TO US FIRST TO EXPLAIN THE PROBLEM. PLEASE DO NOT RETURN ITEMS WITHOUT FIRST WRITING TO EXPLAIN THE PROBLEM. WE WILL DIRECT YOU AS TO WHAT COURSE OF ACTION TO TAKE.

SINCE WE TRY TO USE UNITED PARCEL SERVICE EXCLUSIVELY PLEASE PROVIDE A STREET ADDRESS WHERE POSSIBLE. IF YOU ARE A RURAL DELIVERY AND HAVE A BOX NUMBER PLEASE GIVE US THE ROUTE NUMBER OR ROAD NAME. UPS CANNOT DELIVER TO POST OFFICE BOXES.

DELIVERY TIME VARIES WITH PRODUCT DEMAND. PARTS ORDERS ARE USUALLY SHIPPED WITHIN ONE WEEK. TRUCK ORDERS TWO TO SIX WEEKS, AND CAR ORDERS SIX TO EIGHT WEEKS. READY-TO-RUN EQUIPMENT TAKES LONGER. IF YOU HAVE SPECIAL REQUIREMENTS, SUCH AS A VACATION DEADLINE, BIRTHDAY, ETC, LET US KNOW AS WE WILL DO OUR BEST TO ACCOMMODATE YOUR DELIVERY SCHEDULE.

**CANADIAN ORDERS:** ALL ORDERS UNDER \$50.00 MUST BE PAID BY A INTERNATIONAL POSTAL MONEY ORDER (IN US FUNDS.) ORDERS OVER \$50.00 CAN BE PAID BY EITHER INTERNATIONAL POSTAL MONEY ORDER OR BY CHECK PAYABLE IN US FUNDS DRAWN AGAINST ANY UNITED STATES BANK. WE CANNOT ACCEPT ANY CHECK OTHER THAN THE ABOVE. A \$5.00 SHIPPING AND HANDLING CHARGE MUST BE INCLUDED WITH EACH ORDER (EXCEPT CATALOG ORDERS - THESE ARE SHIPPED POST PAID.)

**FOREIGN ORDERS:** PAYMENT MUST ACCOMPANY ALL ORDERS. (SEE CANADIAN ORDERS ON HOW TO PAY.) SHIPPING CHARGES MUST BE INCLUDED WITH YOUR ORDER. ALLOW FOR A MINIMUM OF 2 KILOS ON CAR ORDERS, 4 KILOS ON PARTS ORDERS; WE WILL CREDIT ANY POSTAGE OVERAGE. IF INSUFFICIENT POSTAGE IS INCLUDED WE WILL ELIMINATE ITEMS ORDERED TO COVER POSTAGE.

# GENERAL INFORMATION

## HISTORY

Q-Car was established in the Spring of 1972 to manufacture trolley, and rapid transit models from the New York City area. Up until that time no rapid transit models from any city had ever been produced, and only a few trolley models from the New York area had been made.

Our first model in O Scale (1/4" = 1') was the 8000 series Brill Peter Witt which ran in Brooklyn. This was followed by several Chicago models including the Chicago Rapid Transit 4000 Steel Elevated car. Our next model brought us back to New York in the form of the 800 series Manhattan Elevated (IRT) open gate car.

As the demand for models grew so did the demand for detail parts to complete these models. No companies manufactured seats, or the many different pieces of equipment found on these very distinct cars. Most of the railroad modelling up until that time with some exceptions dealt with mainline railroads. Trolleys and rapid transit cars operated in distinct transit modes, and required very distinct equipment. Trolleys ran down streets, el cars operated on steel structures over those same streets and in some cities rapid transit cars ran under the streets.

In an effort to give our customers an even more complete model in 1975 we began to manufacture drive systems for our models. The wheel assemblies (better known as "trucks") that were used on these cars were as distinct as the cars themselves. In some cases they were built by the same company which built the car. Names such as J. G. Brill, Standard, St. Louis, Baldwin, Laconia, Clark and General Steel Industries all built trucks. We proceeded to produce a great variety of trucks to meet the needs of our customers. They could build the Manhattan El Car and know that we could provide the St. Louis #50 trucks originally used under these cars. In scale model railroading being exact is important. Using just any part or sub-assembly isn't the way to do things.

The materials used to manufacture the various products we make differ depending on how they will be used. Because of their size cars are cast in a tooling resin which contains a high proportion of steel. If you leave an unpainted car in the rain long enough it will rust! Most of the small parts such as vents, tanks, seats and other interior or underbody items are cast in a pewter type alloy. Other small items such as headlights and trolley poles, horns and marker lights are cast in brass. Gears, worms and pulleys used in our drives systems are machined in bronze (gears,) steel (worms,) and pulleys (brass.)

Q-Car is the only company to offer trolley and rapid transit models on a continuous basis. As an example, although the Brooklyn 8000 was first made in 1972 it is still available today. Most specialty models imported from overseas are short run. Once they are sold no more will be made. The advantage to buying one of our models is if you should damage it in any way we can supply repair parts, or if a part is lost we can supply a new replacement part.

In April of 1984 we again returned to Brooklyn and produced the South Brooklyn Railway locomotive #6 and #7. In the intervening years between the 800 Series Manhattan car and the SBRWY locomotive we produced a variety of cars for such companies as the Connecticut Company, Philadelphia Rapid Transit, Boston Elevated Railway, Chicago Surface Lines and Chicago Rapid Transit. At the beginning of 1993 we introduced the New York City Transit Authority (IRT Division) R17, our most ambitious project to date. This museum quality model includes all the interior paneling, seats motormans cab and controls. It has 60 grab straps and all the correct ceiling detail; we even modelled the thermostat above the motormans door!

For the balance of 1993 and into 1994 we are planning to support the R17 with a number of subway and trackside details. Included in these are IRT contract #1 station columns, subway support beams, between the rail tripper boxes, and subway and surface signals. Station details such as the heaving oak benches, distinct orange and blue waste barrels, and the column mounted gum and chocolate penny vending machines will also be made. We want our customers to be able to make a diorama that accurately portrays what has existed under the streets of New York since 1904.

Q-Car has built its reputation as a company who stands for quality and service to its customers. If you are not satisfied we are not satisfied.

# GENERAL INFORMATION

## CAR PRICES

### O Scale

SF600	Brooklyn Peter Witt 8000-8534 Series Center Exit Car	\$140.60
SF601	CSL Pullman 101-700 Series(Old Style)	\$146.35
SF602	CSL MU Car 3200 & 6200 Series	\$142.95
SF603	CSL Double Truck Safety Car 2904-2922 3093-3118 Series	\$129.80
SF604	CSL Air Door Pullman 501-610 Series	\$159.50
SF605	Connecticut Company 1900-1949 Series	\$159.50
SF606	Connecticut Company 185-199 Series	\$145.00
SF607	Connecticut Company (The Electric Express Co.) 2000 Series Express Motor	\$145.00
SF608K	GE 50 Ton Class I Steeplecab Kit	\$180.10
SF608A	GE 50 Ton Class I Steeplecab Assembled Shell	\$236.00
SF608R*	GE 50 Ton Class I Steeplecab Ready-To Run	\$397.45
SF609K	GE 50 Ton Class II Steeplecab Kit	\$186.30
SF609A	GE 50 Ton Class II Steeplecab Assembled Shell	\$248.40
SF609R*	GE 50 Ton Class II Steeplecab Ready-To Run	\$416.10
SF610	Boston Elevated 6100-6299 Series Center Entrance Car	\$137.85
SF611	Philidelphia Peter Witt 8000-8534 Series Center Exit Car	\$173.85
SB204	Chicago Rapid Transit El Car 4251-4355 Series	\$136.40
SB206	NW Elevated RR Company, Trailer Style Car (No Roof Walks)	\$129.65
SB207	NW Elevated RR Company, Motor Style Car	\$135.45
SB205	Manhattan Elevated, Motor Style Cars (With Roof Markers)	\$149.60
SB208	Manhattan Elevated, Trailer Style Car (No Roof Markers)	\$146.30
SB209	Brooklyn Union Elevated, Motor Style (With Roof Walks & Markers)	\$152.85
SB210	Brooklyn Union Elevated, Trailer Style	\$149.55
SB211	Brooklyn Union Elevated Center Door Motor Style Car (With Markers, Roof Walks, and Platform Steps)	\$166.40
SB212	Brooklyn Union Elevated Center Door Motor Style Car (With Markers, NO Roof Walks, and NO Platform Steps)	\$152.85
SB213	IRT R17 NYCTA Subway Car 6500-6899 Series	\$189.55

\*Ready-To-Run cars are wired for two rail operation. If overhead operation is required please specify at the time of order; there is a \$15.00 charge for steeplecabs wired for overhead operation.

Prices Effective 1 November 1993

O Scale

# NEW YORK CITY TRANSIT SYSTEM

Q-Car Co., Inc

## IRT DIVISION - R17

### Series 6500-6899

### St. Louis Car Co. Passenger Cars

#### Complete Car

SB213 R17 Assembled Shell includes all interior paneling (in kit form,) end gates horns, H2C couplers & motor adaptor plate with correct body bolters, and number decals..... \$189.55

DS135 Finishing Kit contains interior seating, motor-mans cab and controls details such as fans, dummy flourescent fixtures, grab handles, and all underbody equipment except trucks..... \$75.55

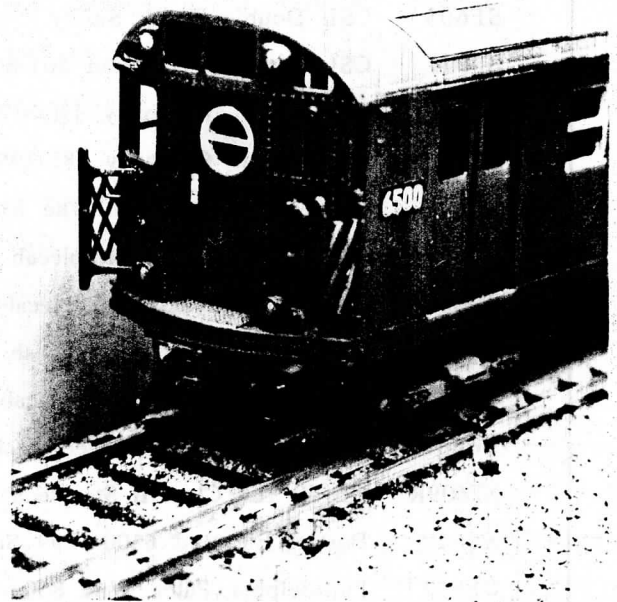
CS243 General Industries Trucks, power & trailer with NYCTA third rail beams, coupler clearing tie bar, tripper brake valve and all brake levers.... \$104.50

**Note:** If all of the above are bought at one time we will provide at no extra charge a two color paint scheme (Body Red or Silver, and underbody Black,) and we will wire it for two rail.

#### A Brief History

The R17 entered service on the number six line of the IRT in in late 1955. The original R17 order was for 400 cars, but by late 1987 only work cars remained in service. Only two cars have survived; #6609 is preserved at the NYCTA musuem, and car #6688 is preserved at Branford.

1 Jan 94



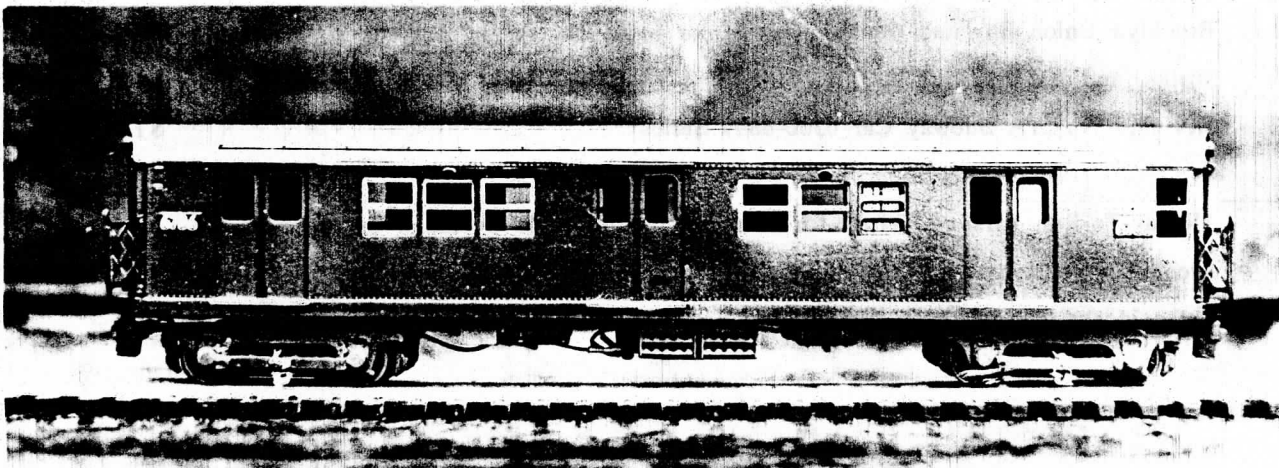
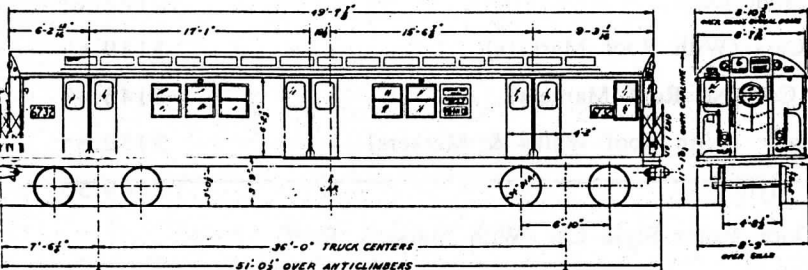
Above: This is a photo of the model - not the prototype

#### Extra Cost Options\*

The following are not required to buy this model. They are offered to those not having the time to do the work themselves.

- 1. Ready to Run, truck mounting and wiring..... \$35.00
- 2. Painted Exterior, Three Color..... \$125.00
- 3. Painted, Exterior & Interior Six Colors & Glass.....\$195.00
- 4. Underbody Detail Mounting includes Assembly of the "SMEE" compressor..... \$25.00
- 5. Interior Detail Mounting includes all wall panels and seating & ceiling details..... \$125.00

\*Not available to dealers.



# TROLLEYS

# O SCALE

# Q-CAR COMPANY, INC.

QUALITY & CRAFTSMANSHIP

BOX 4345

BANGOR, PA 18013

## HARDWARE EQUIPMENT CARS TROLLEY POLES DECALS HEADLIGHTS UNDERBODY SETS

General Hardware					
CS01	Third Rail Chair (IRT Square)	Doz	4.50	CS47	Wood Meter Box .55
CS02	Third Rail Chair (IND, BMT Round)	Doz	4.50	CS48	Brake Cylinder, 14 X 12, w/Slack Adjuster & Levers 1.60
CS03	Pole Base, Round (Used on many Elec Locos)	Pair	.65	CS49	D3F West. Compressor w/Hangers 1.85
CS04	Handrail Post, Ball Type (See B156)	Set of 6	.70	CS50	Brake Cylinder, 8 X 10 w/Levers 1.50
CS05	Flag Post Holder	Pair	.65	CS51	Brake Levers for 14 X 12 Brake Cylinder .75
CS06	Util. Double Rung Under-Floor Ladder	Set of 4	1.35	CS52	Brake Levers for 8 X 10 Brake Cylinder .75
CS07	Bumper Brackets (Used on Wason Exp Mtr)	Set of 4	1.35	CS53	Platform Gate, Manhattan El Set of 2 Sides & 2 Ends 3.40
CS08	Angle Iron Bumper	Pair	1.35	CS54	Retriever Pair .60
CS09	Interior Partition w/Offset Door	Pair	7.45	CS55	Universal Life Guards, Single Ended Cars Set 3.75
CS10	End Bench Seat (As used on 1900)	Set of 4	4.30	CS55B	PCC Uni. Life Guards, Single Ended Cars Set 3.75
CS11	Platform Gate, BRT El, Set of 2 Side, & 2 End		3.40	CS56	Universal Life Guards, Double Ended Cars Set 7.10
CS12	End Bench Seat (As used on 185-199 Jewett)	Set of 4	4.30	CS57	National Brake Compressor and Cradle 2.10
CS13	Double Open Step (As used BRT El Cars)	Set of 4	1.50	CS58	Nat. Brake Cradle Only 1.30
CS14	Blackall Parking Brake w/Ratched & Pawl		.65	CS59	Fuse Box, Large Pair .65
CS15	Deck Handrail Flange Type Support (See B096)	Doz	1.80	CS60	National Brake Compressor Without Cradle 1.15
CS16	Ventilator, Utility New-Era Small	Doz	3.65	CS61	Wood Slat Seat Doz 8.20
CS17	Ventilator, Utility New-Era Large	Doz	3.65	CS62	IRR Motormans Seat .80
CS18	Interior Set, BU Center Door El Car (Seats Only)		15.40	CS63	IRR Plush Seat Doz 8.20
CS19	IRT LO-V Seating w/Wind Guards	Set	15.40	CS64	PCC Cross Seat, Standard Handle Doz 8.20
CS20	Vent, Utility Two-Way Intake, Arch Roof	Doz	3.65	CS64B	PCC Seat, Raised Hand Grab Handle Doz 8.20
CS21	Ventilator, Utility Exhaust for Arch Roof Cars	Doz	3.65	CS65	Anticlimber, 9 X 12 .70
CS22	Roof Mat, 16 Slats, 48 X 60		1.15	CS66	Rattan Flopover Seat Doz 8.20
CS23	Roof Mat, 10 Slats, 18 X 45	Pair	.85	CS67	PCC Motormans Seat .80
CS24	Pole Base, Large	Pair	.65	CS68	Highway Cone Set of 6 2.40
CS25	Brake Wheel Assembly, Underfloor	Set	1.00	CS69	Heavy Duty Car Screw Jack Set of 5 2.40
CS26	Pole Base, Small	Pair	.65	CS70	Round Manhole Cover only (See CS106) .65
CS27	Vent, Utility Compensating Intake	Pair	1.15	CS71	Line Pole Cap, Brooklyn Style Doz 3.60
CS28	Vent, Utility Monitor Roof	Doz	3.65	CS72	Vent, Utility Round Jet Doz 3.60
CS29	Ventilator, Globe	Doz	3.65	CS73	Compressor, CP27 GE 1.25
CS30	16 X 72 Air Tank		1.25	CS74	Compressor, DH25 West. w/Hangers 1.95
CS31	Resistor Bank, Wound Wire		1.25	CS76	Marker Light w/Jewels, NY Wood El Car Style Set of 4 2.80
CS32	West. Control Group		1.30	CS77	Seats, Highback Reversible Plush Walkover Doz 8.60
CS33	Resistor, West.	Set of 5	2.45	CS78	Hood Headlight, Kirby-Neal Pair .80
CS34	Resistor, GE	Set of 5	2.45	CS79	Coupler & Link, Van Dorn Pair 2.90
CS35	Resistor, GE, CG Form A (5 Bolt Resistor)	Set of 5	2.45	CS80	Coupler Support, El Car Pair 1.25
CS36	16 X 84 Air Tank		1.30	CS81	Queenpost Beam Support w/Cross Truss Rod Pair 2.60
CS37	14 X 33 Air Tank		.55	CS82	Tomlinson Coupler w/Bottom Contact Box (IRR) Pair 2.90
CS38	10 X 14 Air Tank		.50	CS82B	Tomlinson Coupler w/Side Contact Box Pair 2.90
CS39	16 X 36 Air Tank		.90	CS83	Coupler Contact Box (Specify Side Or Bottom Mount) Set .80
CS40	16 X 48 Air Tank		1.10	CS84	Street Lamp & Hanger, Chicago Style Pair 2.80
CS41	16 X 64 Air Tank		1.20	CS85	Street Lamp Head, Turn of The Century Type Pair 1.25
CS42	Battery Box, Metal Clad		.55	CS86	No Longer Available
CS43	Main Line Switch		.50	CS87	Line Pole Cap, Acorn Style Doz 3.60
CS44	Fuse Box, Small	Pair	.65	CS88	Traffic Light Head only .85
CS45	Reverser, Remote Operated		.55	CS89	15 X 36 Air Tank, Riveted .90
CS46	Line Switch, Small		.65	CS90	Third Rail Shoe Beam, Over-running Style Set of 4 4.50
				CS91	Resistor, GE Control Type EW2A (Kit) Set of 3 2.60
				CS92	Fuse Box & Mount .80
				CS93	No Longer Available
				CS94	Resistor Protective Covers for CS33 & 34 Set of 10 2.50
				CS95	Box, 21 X 10 X 18 .70
				CS96	IRR Control Group 1.75
				CS97	IRR Battery Box 1.80
				CS98	Box, 16 X 6 X 7 .50
				CS99	Box, 12 X 10 X 14 .50
				CS100	MU Control Box (CSL) 1.55
				CS101	Resistor, Coil Type (Kit) Set of 3 2.80
				CS102	Kicking Coll, Small Pair .65
				CS103	Air Filter, 8" Suction Compressor Pair .65
				CS104	Needle Beam Support pair 2.60
				CS105	Coupler Support (As used on NW El Car) Pair 1.30
				CS106	Manhole Cover, Round w/Frame Set of 3 2.80
				CS107	Wind Guards, IRT Lo-V Center Door Set of 4 2.50
				CS108	Ceiling Fans, IRT Lo-V Set of 4 4.30
				CS109	Seating Set, IRT R17 Seats only 10.80
				CS110	End Buffer Gates, IRT Post War, R12 thru R36 Set 7.45
				CS111	Motormans Cab, IRT R17 (Can be used on most NYCTA R Type Cars) Pair 6.20
				CS112	16 X 48 Air Tank 1.10
				CS113	16 X 42 Air Tank .95
				CS114	16 X 34 Air Tank .90
				CS115	11 X 30 Air Tank .55
				CS116	10 X 24 Air Tank .50
				CS117	Whistle Pair .65
				CS118	Retriever, Knudsen 5B, HD Interurban Type Pair .65
				CS119	NS Truck Pilot Pair 2.20
				CS120	Main Fuse Box, Heavy Duty Interurban Pair .65
				CS121	Wood Battery Box in Metal Frame .75
				CS122	Brake Cylinder, 14 X 12, No Slack Adj w/Levers 1.35
				CS123	Roof Mat, 12 Slats, 21 X 42 Pair .85
				CS124	HL Control Box & Line Switch, Type I 2.10
				CS125	HL Control Box & Line Switch, Type II 2.10
				CS126	HL Control Box & Line Switch, Type III 2.10
				CS127	HL Control Box & Line Switch, Type IV 2.10
				CS128	HL Control Box & Line Switch, Type V 2.10
				CS129	Johnson Fare Box, Type 1054 .50
				CS130	Motorman, Two Hands Extended, Unpainted Set of 3 2.50
				CS131	Motorman, One Hand Extended, Unpainted Set of 3 2.50
				CS132	Motorman, Two Hands Extended, Painted Each 5.85
				CS133	K72 Controller 2.30
				CS134	K6L Controller 2.30
				CS135	K6P Controller 2.30
				CS136	K36B Controller 2.30
				CS137	GE165A Controller 2.30
				CS138	MU Controller for Type HL Control 2.30
				CS139	Motor-Generator (IRR) 1.15

CS140 XM29 (XM179) Controller (IND or IRT R1-36) 3.15	CS188 GrabStraps, El Car Ceiling Leather (50 Were Used Per Car) 3.65	CS336 Entry Wind Guards, PCC Set of 3 2.50
CS141 C3-131-13 Controller (IRT Lo-V) 3.40	CS189 Grab Straps, R17, Heavy Cast Stainless Type Doz 3.65	CS337 PCC Motormans Control Platform 1.20
CS142 Reverser, Split Cover (IRR) .55	CS190 Traction Motor, GE #67 40 HP (Split Case for .125" Axles) 7.45	CS338 PCC Rear Seat, Curved Type 1.30
CS143 GE M Controller (Used on some Steeplecabs) 2.30	CS191 Traction Motor, GE #67 40 HP (Solid Case for .125" Axles) 5.95	CS339 PCC Rear Seat, Streight Type 1.30
CS144 CA&E Third Rail Shoe Beam w/Ice Scrapper & Cylinder Set of 4 4.50	For the remainder of CS192 thru CS299 See our "TRUCKS" price list.	CS340 PCC Long Bench, Five Seat, Ten Passenger 3.15
CS145 NS Coupler Shank with Hanger Pair 1.50	CS300 El Support Pillar, Cast Sectional Flanged Tube, 21' High Pair 5.50	CS341 Step Well, Single Step w/ Anti-Slip Mats Pair 2.20
CS146 Tank, 10 X 24 Conical End .50	CS301 El Pillar Base, Cast Sub-Surface Support w/Above Surface Ring Pair 1.75	CS342 PCC Bench Seat, Small, Three Passenger 1.20
CS147 Tank, 17 X 55 Conical End .85	CS302 Grab Straps, Subway Car Ceiling (As Used on Early Steel Cars (NY LoV)) Doz 3.65	CS343 Motormans Partition, Boston Elev Car 6.35
CS148 Single Step (1900 Type) Set of 4 1.50	CS303 Marker Light, Round Single Lens w/Jewel (See B175) Set of 4 3.20	CS344 Step Well, Two Step (A Shorter Version of CS335) Pair 2.20
CS149 Ventilator, Utility Double Honeycomb Set of 6 1.85	Partial Steeplecab Parts List	CS345 Switch Box, Small, Roof Mounted (Boston Elev) Pair .65
CS150 Drawbar Box (TMERL) 1.35	CS306 Steeplecab Roof Walk w/Pole Bases, I & II 1.30	CS346 Segmented Seat, El Car Three Passenger Set of 4 4.00
CS151 Line Switch w/External Handle .55	CS307 Steeplecab Traction Weights, I & II Pair 5.50	CS347 Bench Seat, Wood Slat, Seven Passenger 1.55
CS152 Fuse Box, Large (TMERL) .70	CS308 Steeplecab Cab Floor, Class II 4.05	CS348 Bench Seat, Wood Slat, Round Corner, Seven Passenger (PRT) 1.55
CS153 Air Cooling Pipe 1.15	CS309 Steeplecab Cab Floor, Class I 5.40	CS349 Bench Seat, Wood Slat, w/Heater, Two Passenger .70
CS154 12 X 48 Air Tank .80	CS310 Steeplecab Main Floor Channel Beam Pair 8.20	CS350 Rear Curved Seat, Wood Slat, Six Passenger (PRT) 2.15
CS155 Vent, Pearle-Thomas Doz 3.65	CS311 Steeplecab Bumper, Class I, 9'6" Wide Pair 2.15	CS351 Conductors Position, Two Partitions w/Stool Set 1.80
CS156 Stop Light, Dash Mount (TMERL) Pair .50	CS312 Steeplecab Bumper, Class II, 8'6" Wide Pair 2.15	CS352 Wind Guard, Exit (PRT) .70
CS157 CA&E Control Group 1.55	CS313 Steeplecab Bolster, Class I Pair 2.50	CS353 Convertible Seat, Wood Slat w/Heater, Three Passenger, Platform (BRT) 1.20
CS158 CA&E Reverser .70	CS314 Steeplecab Bolster, Class Pair 2.50	CS354 Motormans Stools Pair .65
CS159 Resistor, West. Set of 5 2.45	CS315 Steeplecab Front Step Boards w/Mount. Brackets Pair 5.50	CS355 PCC Roof Walk 1.55
CS160 Vestibule Partttion for CSL Pullman Pair 7.45	CS316 Steeplecab Front Step Boards w/Mount. Brackets Pair 5.50	CS356 PCC Pole Platform .90
CS161 Third Rail Shoe Beams, NS Set of 4 4.50	CS320 Steeplecab Ladder Step Plate, Class I & II Set of 4 1.35	CS357 PCC Roof Cowling, Pullman (Incl. CS355 & 356) Set 6.20
CS162 Buss Box w/Mount (CA&E) .60	CS321 Steeplecab Chain Pulley Mount for Hand Brake .40	CS358 PCC Roof Cowling, St. Louis Post War (Includes CS355 & CS356) Set 6.20
CS163 Brake Wheel Assembly, Underfloor, CA&E Set .95	CS322 Steeplecab Windows, Class I & II Pair 1.15	CS359 Vent, PCC Auxiliary Pair 1.00
CS164 MU Pocket, Underfloor Type Pair .65	CS323 Steeplecab Equipment Box, Steel, Class II .70	CS360 Step Well, Single Shallow Step w/Anti-Slip Mat Pair 1.35
CS165 Circuit Relay Box (CA&E) .55	CS324 Steeplecab Fuse Box, Roof Mount .40	CS361 Coupler, WAB Type H2 w/Radius Bar (IRT LoV) Pair 4.90
CS166 Induction Coil, Large (CA&E) pair .65	CS325 Steeplecab Headlight Mount, Class I & II Pair .70	CS362 Coupler, Wab H2A, B, C, w/Radius Bar (BMT, IND, IRT R1-42) Pair 6.15
CS167 MU Pocket, Small Dash Type Pair .65	CS326 Steeplecab Sand Hatch, Class I & II Pair .70	CS363 Ceiling Fans, 23" Axiflow Fans Set of 4 3.40
CS168 MU Pocket, Large Type Pair .65	CS327 Steeplecab Hood Plate Vent Class I & II Pair 1.15	CS364 Third Rail Beams (NYCTA) Set of 4 4.50
CS169 Resistor Carrier (CA&E) Pair 3.75	CS328 Steeplecab Bell Mount, Class I & II .40	CS365 Third Rail Shoe Beams (LVT) Set of 4 4.50
CS170 Triple Valve for HD Air Brake Systems 1.25	For a Complete Steeplecab listing send your SSAE and request a copy.	CS366 Plush Seat, Two Passenger (R17) Set of 4 2.75
CS171 Line Switch (CA&E) .75	CS332 PCC Car Bolster Pair 2.75	CS367 Plush Bench Seat, Ten Passenger (R17) Set of 4 8.10
CS172 Stirrup Style Step, 16" High Set of 4 1.50	CS333 PCC Retrelver Pair .65	CS368 Door Threshold, R1 to R42 (Pewter) Set of 6 2.45
CS173 Roof Mat, 5 Slats, 21 X 26 Pair .75	CS334 Anticlimber, Three Bar Full Wrap-around 1.10	CS369 Marker Lights, Lovell-Dressel (Also used as Headlights (NYCTA)) Set of 4 1.25
CS174 Roof Mat, 3 Legs, 5 Slats, 26 X 29 Pair .75	CS335 Step-Wells, Two Step w/ Anti-Slip Mats (PCC) Pair 2.20	CS370 Wall Panels, Interior R17 Set 12.35
CS175 Clearstory Roof Platform 2 Slats Pair .80		CS371 Flourescent Fixture, Luminator 6' (As used on R10-R62 NYCTA) Set of 6 3.65
CS176 External Dash Sign Bulb Cover Pair .65		CS372 Compressor, WABCO A2A "SMEE" 2CY38 & Frame (R10 to R17) KIT 4.65
CS177 Curb Sewer Grate & Frame Set of 4 3.75		CS373 Line Switch, R17 and Heavy Interurban .95
CS178 Sewer Grate only Set of 4 1.50		CS374 Box, Heater & Fan Control (R17) .55
CS179 Surface Sewer Grate & Frame Set of 4 3.75		
CS180 Sewer Grate & Frame, Between-Rail Set of 4 3.75		
CS181 Sewer Grate only, Between Rail Set of 4 1.50		
CS182 Letter Box on Post .75		
CS183 Bench Seat, Wood Slat Bklyn 8000 w/Flanged Supports Pair 7.50		
CS184 End Bench Seat, CSL Pullman Set of 4 3.75		
CS185 Cross Seat, El Car, High-back w/Armrest Set of 8 8.95		
CS186 Bench Seat, Segmented, Four Passenger Set of 4 4.50		
CS187 El Car Seating (Complete for One Car) 17.95		

CS167 & CS168 are for the CSL MU Car.

# Q-Car Company, Inc.

## O Scale

CS375 Main Knife Switch & Fuse Box, R17 .90		Finishing Kits		DS144 CTA 5-50 Interior w/ Controls (No Couplers or Underbody) 32.90	
CS376 Control Box, GE M6 .55		DS111 Connecticut Co. 1900 86.90			
CS377 Trickle Charger Box .50		DS112 CSL Pullman 101-700 60.45		DS146 PRT Nearside Interior 18.80	
CS378 GE Control Group & Motor Generator, 17KG137E1 5.60		DS113 Conn. Co 185-199 76.15		DS147 LVT 1000 42.65	
CS379 Bulkhead, IRT LoV w/Ad Card Holder Pair 3.65		DS114 CRT 4000 Elevated Car 66.90			
CS380 Control Group, LVT 1000 Series Cars Set 2.10		DS115 Bklyn 8000 Peter Witt 59.85			
CS381 Control Group, Lake Shore Electric w/Line Switch 2.10		DS116 CSL MU Car 59.30			
CS382 Clneston Controller Pair 2.15		DS117 CSL Safety Car 52.80			
CS383 Wind Guards, CTA 5-50 or 6000 Series Set of 8 6.50		DS118 Wason Express Motor 39.35			
CS384 Motormans Cab, CTA 5-50 or 6000 Series Pair 6.20		DS119 Union Trac-Ind. Rwy 70.90			
CS385 Pilot, 13.5 X 66 22 Round Spokes Pair 1.10		DS120* North Shore (See note for Correct car Series) 96.40			
		DS121 PCC, Type I, Brooklyn 41.75			
		DS122 PCC, Type II Philly 38.60			
		DS123 PCC, Type III Baltimore 40.50			
		DS124 PCC, Type IV Pitts.1000 39.20			
		DS125 PCC, Type V Pitts. 1600 & 1700 Series 41.90			
		DS126 PCC, Type VI Minn. 40.20			
		DS127 IRR Highspeed 59.10			
		DS128 PCC, Double Ended SEPTA, St. Louis 63.25			
		DS129 PCC, Double Ended MUNI (San Francisco) 61.25			
		DS130 Boston Elevated RWY 6100-6299 56.70			
		DS131 Phil. & West Chester (Septa) Center Door 60.80			
		DS132 Phil. 8000 Peter Witt 44.65			
		DS133 Houghton County Inter-urban 47.90			
		DS134 PCC, Type IX Chicago, Pre-War** 37.90			
		DS135 R17 IRT Subway Car 75.55			
		DS136 LoV IRT Subway Car Interior w/Bulkhead & Controls (No Couplers or Underbody) 45.15			
		DS137 Single Truck Birney, No Pole Hooks or Folding Seats 46.00			
		DS138 Double Truck Birney, Dbl Front; Single Rear Door Cars 59.40			
		DS139 D'ble Truck Birney, Dbl Front & Rear Door Cars 60.15			
		DS140 Boston Type IV 59.30			
		DS141 Boston Type V 54.10			
		DS142 Phil. & West Chester (SEPTA) 17-44 Series 62.75			
		DS143 PCC, Type X, Chicago Post-War 37.20			

INCLUDES UNDERBODY  
 INTERIOR → LOST WAX  
 RADIAL COUPLERS.  
 + PILES

Note: Finishing Kits contain ALL the equipment (we make) needed to complete each model listed. (Trucks and Glazing are NOT included.) Kits are not available for all cars.

\* DS120 does NOT contain Pilots. It can be used for 170-180, 700, 407-411, 414-417, and 215-239 Series Cars.

\*\*This set does not contain Step Wells or Universal Life Guards. Step Wells for this type car are not available at this time; Universal Life Guards are and if required specify at the time of order and add \$3.75 to the listed price.

CB 10



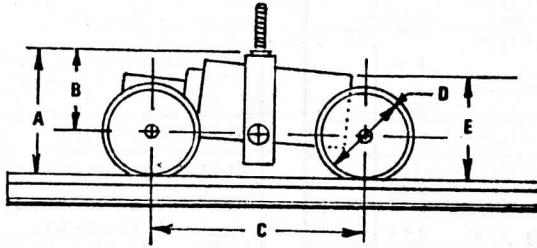
Decals		Overhead Material		Machine Screws	
DE20 Chicago Transit Authority Heralds only	1.15	PB118 Overhead Wire, .018 X 100' Phos. Bronze	6.95	S1115 2-56 X 3/8" Brass Round Head	Doz 5.35
DE21 Chicago Surface Lines Complete Set	3.25	PB120 Overhead Wire, .020 X 100' Phos. Bronze	6.95	S1117 2-56 X 1/2" Brass Round Head	Doz 5.35
DE22 CSL Heralds only	.65			S1118 2-56 X 5/8" Brass Round Head	Doz 5.35
DE23 No Longer Available		B101 Overhead Line Pole, Taper Pipe Style (Specify City)	5.30	S1119 2-56 X 3/4" Brass Round Head	Doz 5.35
DE24 No Longer Available				S1211 2-56 X 1/8" Steel Round Head	Doz 2.55
DE25 CSL Numbers Set of 4	.95			S1212 2-56 X 3/16 Steel Round Head	Doz 2.55
DE26 Connecticut Co Complete Set (Early Extended Style) Red	3.40	Brass Railing Parts		S1213 2-56 X 1/4" Steel Round Head	Doz 2.55
DE27 Conn Co Complete Set (Late Short Style) Red No Longer Available		B156 Handrail Post, Round Short (See CS04)	2.40	S1214 2-56 X 5/16" Steel Round Head	Doz 2.55
DE28 CSL One Man Car Headlight Stripe w/ Outline (Silver)	2.40	B094 Pipe Tee, 2"	1.90	S1215 2-56 X 3/8" Steel Round Head	Doz 2.55
DE29 Silver Stripes, 1/64"	.95	B095 See Steeplecab Parts List		S1217 2-56 X 1/2" Steel Round Head	Doz 2.55
		B096 Handrail Flange Support, Base Plate (2" Pipe)	1.90	S1221 2-56 X 1/8" Steel Flat Head	Doz 2.55
		B170 Post, Handrail Tubular Short	2.10	S1222 2-56 X 3/16" Steel Flat Head	Doz 2.55
		B171 Post, Handrail Tubular Corner Short w/Corner Cap	2.80	S1223 2-56 X 1/4" Steel Flat Head	Doz 2.55
"B" Prefix Indicates Lost Wax or Brass Construction.		B172 Cap, Corner Post only	.65	S1225 2-56 X 3/8" Steel Flat Head	Doz 2.55
		B186 Steeplecab Support for Class I Steeplecab Pair	6.20	S1226 2-56 X 7/16 Steel Flat Head	Doz 2.55
Assembled Trolley Poles		Flag Posts		S1229 2-56 X 3/4" Steel Flat Head	Doz 2.55
Poles Bought in Pairs are \$17.95 per pair; except B127 which is 21.60. Bulk Prices are available at additional savings - write for details.		B097 Flag Holder, Cast Post (Used on Loco Pilots) Pair	3.15	S1262 2-56 X 3/16 Steel Pan Head	Doz 2.55
		Retrievers		S1265 2-56 X 3/8" Steel Pan Head	Doz 2.55
B120 Four Spring Horizontal w/Wheel	9.90	B154 Retriever, City Cars	2.45	S2221 3-48 X 1/8" Steel Flat Head	Doz 2.55
B121 Four Spring Horizontal w/Slider	9.90	B155 Retriever, Knudsen 5B, HD, Interurban Cars	2.45	S2222 3-48 X 3/16" Steel Flat Head	Doz 2.55
B125 Four Spring Vertical w/Wheel	9.90	Wheel Guards		S2213 3-48 X 1/4" Steel Flat Head	Doz 2.55
B126 Four Spring Vertical w/Slider	9.90	B160 Providence Wheel Guard, Wire Basket Type Each	14.00	S2217 3-48 XZ 1/2" Steel Round Head	Doz 4.85
B127 Four Spring Vertical w/Swivel Slider Shoe	11.45			S2237 3-48 X 1/2" Steel Filister Head (Bolster Screw)	Doz 5.60
B130 Four Spring Back w/Wheel	9.90	Radial Couplers		S3210 4-40 X 1" Steel Round Head	Doz 4.85
B131 Four Spring Back w/Slider	9.90	B133 Coupler Shank, NS	5.30	S3211 4-40 X 1 1/8" Steel Round Head	Doz 4.85
		B135 Coupler, NS w/Spring Hanger & Carrier (all Brass Unit)	11.95	S3212 4-40 X 1 1/4" Steel Round Head	Doz 4.85
		CB10, CB11 & CB11B are all White Metal.		S3213 4-40 X 1 1/2" Steel Round Head	Doz 4.85
Trolley Pole Parts		CB10 Radial Coupler, NS (All White Metal) Pair	4.85		
MF20 Trolley Pole Springs, .064 X .425" Set of 4	.70	CB11 Radial Coupler, Tomlinson w/Bottom Contact Box	4.85	Nuts	
B109 Wheel Harp, 6" dia x 3" Wide (Non-Scale - NMRA Std)	3.15	CB11B Radial Coupler, Tomlinson w/Side Contact Boxes	4.85	N114 2-56 Brass Hex Nuts	Doz 5.60
B110 Wheel Harp, 5.5 Dia X 1.5" Wide (Scale Size)	3.15	CS361 Coupler, WAB Type H2 w/Radius Bar	4.90	N124 2-56 Steel Hex Nuts	Doz 1.95
B113 Swivel Slider Shoe, Used on Trolley Coaches	4.40	CS362 Coupler, WAB Type H2A w/Radius Bar	6.15	N1245 2-56 Steel Hex Elastic Stop Nuts	Doz 4.85
B115 Slider Shoe	3.15	Controller Handles & Brake Valves (Lost Wax Brass)		Washers	
		B211 Controller Handles, 5 Assorted	5.85	W21 1/4" OD X 1/16" ID Brass #2 Washer (For 2-56)	Doz 2.65
Pole Hold-down Hooks		B212 K6P Controller Handle	1.25	W42 5/16" X 3/32" ID Brass #4 Washer (3-48 or 4-40)	Doz 2.65
B149 Trolley Pole Hook, Short Outside Loop	Pair 3.20	B213 K36B Controller Handle	1.25		
B150 Trolley Pole Hook, Tall Inside Loop	Pair 3.20	B214 GE165A Controller Handle	1.25		
B151 Trolley Pole Hook, Short Inside Loop	Pair 3.20	B215 HL Controller Handle	1.25		
B152 Trolley Pole Hook, BRT Low Flat Outside Loop	Pair 3.20	B218 Brake Handles, 6 Assorted	5.95		
B155 Trolley Pole Hook, PCC, Tall Inside Loop w/Brace	Pair 3.20	B219 K36B Hand Brake, Handle Can Be Used as a Door Handle	1.25		
		B220 K36B or K6P Air Brake Handle & Valve	2.45		
		B222 GE165A or HL Air Brake Handle & Valve	2.45		
		B224 Parking Brake, Blackall, Hand Crank w/Ratched & Pawl (See CS14)	6.75		

Regarding the above nuts, screws, and washers we are finding that prices are rising at a very rapid pace. We are doing our best to keep prices stable by buying in larger quantities & finding new suppliers. If you need this material order it now.

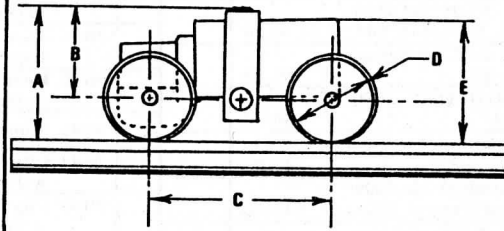


# Q-DRIVES Specifications

All motors are for 12 volt Direct Current operation. Can motor units including Magic Carpets should not be used with "Pulse-Power."

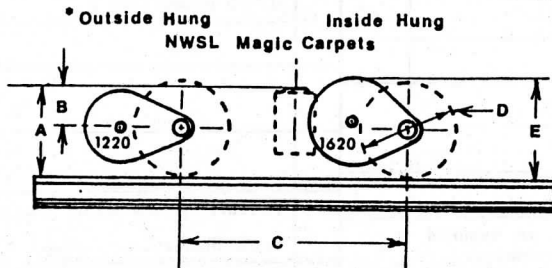


**MT10LP**

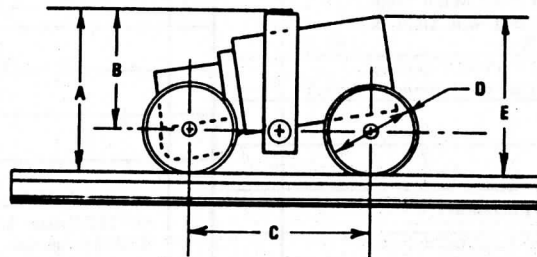


**MT10**

Wheelbase Limits	C	6' 6" to 8'					C	None					
Axle to Bolster Top	B		.540	.565			B	.750					
Wheel Diameters	D		33"	36"			D	26"	28"	30"	33"	36"	40"
Rail to Bolster Top	A		.910	.940			A	1.020	1.042	1.063	1.094	1.125	1.167
Rail to Top of Motor Case	E		.710	.741			E	.958	.979	1.00	1.032	1.062	1.104
MOTOR TYPE	1630 Can Motor					1630 Can Motor							
CAPACITY	Medium to Heavy Duty					Medium to Heavy Duty							
GEAR TYPE	3/16" Steel Worm - 3/32" Bronze Gear					3/16" Steel Worm - 3/32" Bronze Gear							
WHEELSIZE LIMITS	33" & 36"					26" thru 40"		30" thru 40"					
AVAILABLE RATIOS	16, 20, 24-1					16, 20, 24, 28-1		30-1					
HORSEPOWER	.0024					.0024							



**Q Type MT16**



**Q Type MT11**

Wheelbase Limits	C	None					C	None					
Axle to Bolster Top	B	.281					B	1.000					
Wheel Diameters	D	26"	28"	30"	33"	36"	40"	D	28"	30"	33"	36"	40"
Rail to Bolster Top	A	.551	.573	.596	.624	.656	.698	A	1.230	1.251	1.282	1.313	1.355
Rail to Top of Motor Case	E	MC I, III		.618				E	1.198	1.219	1.250	1.281	1.323
		MC II		.795									
MOTOR TYPE	NWSL		MC I	MC II	MC III	2032 Can Motor							
			1220	1620	1220								
CAPACITY	Light to Heavy					Extra Heavy Duty							
GEAR TYPE	Brass & Delrin					5/16" Steel Worm - 1/8" Bronze Gear							
WHEELSIZE LIMITS	26" through 40"					28" thru 40"		30" thru 40"					
AVAILABLE RATIOS	17.9, 19.4, 27-1					15, 18, 20-1		24-1					
HORSEPOWER			1220	1620									
			.0008	.0013	.0040								

# Interim Truck Price Sheet

<b>All Sideframes</b> except Below*	10.25/Set of 4
*General Steel Industries Sideframe	12.65/Set of 4
*Brill 21E (Lost Wax) Sideframes	15.10/Pair
*Clark B2 Sideframes, Includes Bolsters	15.65/Set of 4 (New Price)

<b>All Trailer Trucks</b> except Below**	11.60/Each
**General Steel Industries Trailer Truck	19.70/Each
**Brill 21E (Lost Wax) Sideframes	18.20/Each
**Clark B2 Trailer Truck	37.70/Each

## Motor Trucks:

MT09 1833 Can Motor Drive Pwr & Trlr	93.65***
MT10 1630 Can Motor Drive Power & Trailer	88.30***
MT10P 1630 Clark B2 Pwr & Trlr	89.80
MT10LP 1630 Can Motor Low Profile Pwr & Trailer	88.30***
MT11 2032 Can Motor Drive Power & Trailer	93.65***
MT16 Double Motor Magic Carpets, Pwr & Trailer	112.30***

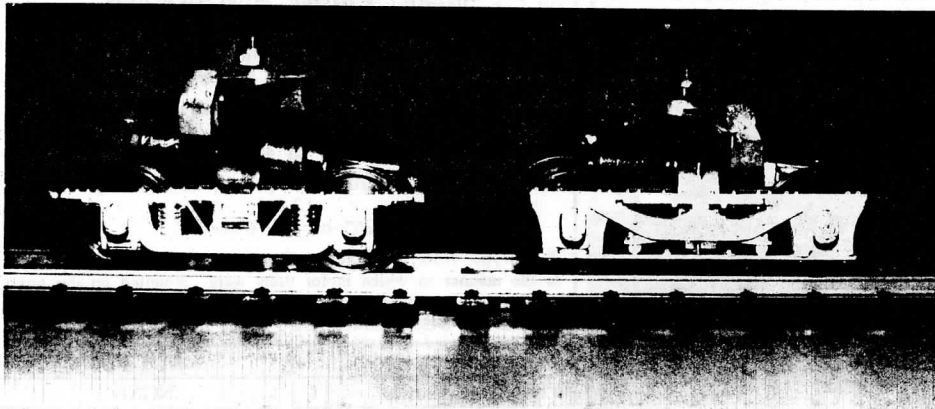
*300 RAN  
Pwr Beam 4.50  
+ Pilots @ 2.20*

\*\*\*Add \$16.20 to General Steel Industries Power & Truck price; for Brill 21E Power Trucks add 4.80 for MT16's and \$1.70 for any MT10 type.

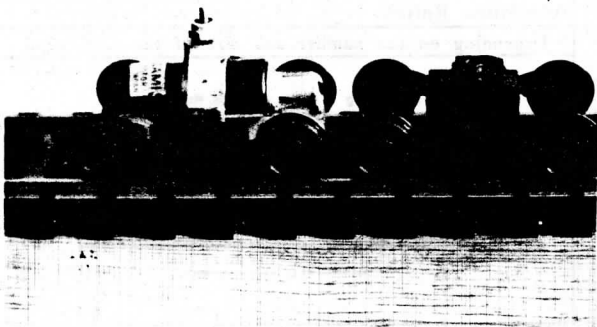
**Note:** We always try to provide the lowest profile truck unless you specify otherwise. Wheelbase is the deciding factor. Most Trucks above 78" with 33" or 36" are usually underfloor (MT10LP).

*QUINTIN*

Trucks		O Scale	
<b>Q-Car Company, Inc.</b> Box 4345      Bangor, Pa 18013		<b>Miscellaneous Truck Parts</b>	
<b>Drives      Parts      Wheels</b> <b>O Scale</b>		<b>Non-Insulated Wheelsets</b>	
For complete Motor Truck Data see the Q-Drive Specification Page found elsewhere in our Catalog. For more PCC Truck information see our Q-Drive PCC page.		WS400 22" Diameter Pair 6.20 WS401 26" Diameter Pair 6.20 WS402 28" Diameter Pair 6.20 WS403 30" Diameter Pair 6.20 WS404 33" Diameter Pair 6.20 WS405 36" Diameter Pair 6.20 WS406 40" Diameter Pair 7.30 WS422 26" Dia. PCC, Specify Res. or Super Res Wheel, Dis-assembled Pair 8.85	
<b>NWSL Magic Carpets</b>		<b>Insulated Wheelsets</b>	
MT20 NWSL Magic Carpet Motor Drive (Unmounted) Specify Wheelsize And Type (See Specifications Below) 44.95		WS407 22" Insulated Pair 6.20 WS408 26" Insulated Pair 6.20 WS409 28" Insulated Pair 6.20 WS410 30" Insulated Pair 6.20 WS411 33" Insulated Pair 6.20 WS412 36" Insulated Pair 6.20 WS413 40" Insulated Pair 7.30 WS423 26" Dia. PCC, Specify Res. or Super Res Wheel, Dis-assembled Pair 8.85	
<b>Q-Car Power Drives</b>		<b>Fine Scale Wheelsets</b>	
MD04 Q-Drive Motor Mover w/ 1630 Can Motor 63.15		WS414 26" Fine Scale Pair 6.20 WS415 28" Fine Scale Pair 6.20 WS416 30" Fine Scale Pair 6.20 WS417 33" Fine Scale Pair 6.20 WS418 36" Fine Scale Pair 6.20	
MD05 Q-Drive Motor Mover w/ 2032 Can Motor 67.40		For Fine Scale Wheels Please specify your track gage - 1.25 or 1.177. Fine Scale wheels are NOT recommended for general use.	
MD06 Q-Drive Motor Mover w/ 1833 Flat Can Motor 67.40		<b>Tinplate Wheels</b>	
<b>Total for Drives</b>		WS418 26" Diameter Pair 8.20 WS419 26" Insulated Pair 8.20 WS420 33" Diameter Pair 8.20 WS421 33" Insulated Pair 8.20	
<b>Magic Carpet Specifications</b>		<b>Brass Truck Parts</b>	
MC I 1220 Motor (Small Motor Case) 27-1 Ratio 30", 33" 36" or 40" Wheels		B190 Bearings, Sideframe Set of 8 2.75 B191 Pulley, Large Each 1.30 B192 Pulley, Small Each 1.30	
MCII 1620 Motor (Large Motor Case) 19.4-1 Ratio 33", 36" or 40" Wheels		<b>Belts</b>	
MCIII 1220 Motor (Small Motor Case) 17.9-1 26" or 28" Wheels		MF22 Spring Belt for use with B191-192 (Specify Wheel-base) Each 1.35 B098 Copper Foil (.187 or .250 X 12") Can be used to hide interior or exterior wiring (Adhesive Backed.) .65	
<b>Prototype Note: Outside Hung and Inside Hung</b> refer to the manner in which motor units were mounted on the prototype. For Example the 39E Brill used Outside Hung motors, whereas the 8430 Baldwin used inside hung.		<b>Product Sheets, Specify Interest</b> SSAE <b>Price Sheets</b> Large \$.52 SSAE	
The St. Louis # 50 Are for our Manhattan Gate Car Trailers. The 7825 Baldwin can be used for Man. Gate motor cars - with a 7222 trailer truck. Bklyn Gate motor & trailers used the 7222BU Peckham.		01 Illustrated Catalog (O Scale Parts Cars, Sideframes, Power & Trailer Trucks, HO Car Bodies & Parts. 12.90 02 HO Catalog only 1.25	
The PB150 are for the CSL Pullman (Air Door Car also.) The CRT 4000 is the same as the Man, Gate Motor. The 39E2X are for the CSL MU Car. The 39E2 Are for our CSL Safety Car, and the Philly Peter Witt. The 77E1 are for our Brooklyn 8000, and the Boston Elev Car. The C55P Standards are for our 1900 Conn. Co Car. The O-50 (Jewett) are for the Conn. Co 185-199 and the Wason Express Motor. The General Steel Industries is for our NYCTA R17. The GE95 are for our Steeplecabs.		<b>NOTE</b> Short Wheelbase Trucks (60" or less) with 33" or larger wheels <b>Must</b> use the CS198 Truck Bolster.	
<b>Q-Car Gear Ratios - Speed</b> 20-1 with 26" wheels & 1630 Motor will produce about 65 Scale MPH. 24-1 with 33" wheels & 1630 Motor will produce about 60 Scale MPH; 36" about 65 Scale MPH. 30-1 with 33" wheels & 1630 Motor will produce about 40 Scale MPH; 36" about 45 Scale MPH. The higher the ratio the greater the starting torque, and the higher the pulling power.		<b>Quality &amp; Craftsmanship</b>	
<b>GUARANTEE</b> All Q-Drives and Magic Carpet units are guaranteed for one full Year. We will repair or replace any unit found defective in material or workmanship. If you have trouble <b>Write Us First</b> . Do not return the item until we direct you to do so. We cannot be responsible for units returned without authorization. If we find the unit to be defective (our fault) we will pay the postage in both directions. Otherwise, you are responsible for shipping costs. If the item is beyond the guarantee period of one year we will service it for a small charge plus shipping cost (\$4.00.) In many cases we will repair items for just the cost of postage.		Name _____ Address _____ City State Zip _____	
		Please add 4.00 on all orders for shipping and handling. Pennsylvania residents please include your sales tax. For trucks, Sideframes, Power Drives, Wheelsets, and Truck Parts see "TROLLEY TRUCKS" Price Sheets. For PCC Trucks See Our "Q-DRIVES-PCC" Informational Price Sheet. <b>Prices Effective</b> 1 January 1994	
		<b>Total Enclosed</b>	



Above: The nose to nose photo of the MT11 (Left) and the MT10 (Right) gives some idea of the difference in height of both the gear boxes and the rail to bolster op height.



Above: MT10LRV conversion is shown (the second power truck is not shown.) You must provide the trailer truck (shown on the right) and all the magnetic brake assemblies.

Prices include one Power and one Trailer Truck

Sideframes and car bolsters are included with each assembled truck.

Please specify Insulated (2-Rail) or non-insulated (Overhead) when ordering. If you do not specify we will provide Non-Insulated.

MT09	1833 Flat Can Motor Drive	\$93.65
MT10	1630 Can Motor Drive (Short WB)	\$88.30
MT10P	1630 PCC Motor Drive	\$89.80
MT10LP	1630 Can Motor Drive (Long Wb)	\$88.30
MT10LRV	Double 1630 Can Motor Drives	\$181.70
MT11	2032 Can Motor Drive	\$93.65

**ALL MOTORS ARE FOR 12 VOLT DIRECT CURRENT OPERATION. CAN MOTOR UNITS INCLUDING MAGIC CARPETS SHOULD NOT BE OPERATED WITH "PULSE POWER."**

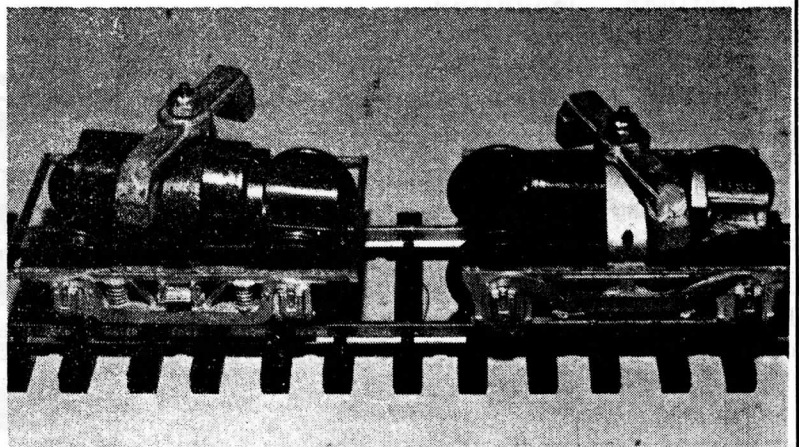
Q-Drives are manufactured with performance and durability in mind. Simplified maintenance is accomplished through bolt together assembly.

Performance is achieved through a variety of motor types and sizes, and through the large variety of gear ratios possible. The use of bronze spur gears increases truck life while allowing for smooth power transmission from the steel worm; bronze being more "slippery" than brass polishing itself as it operates.

The fully enclosed gear boxes keep dirt from fouling the gears and oil from splashing out onto the track and car underside.

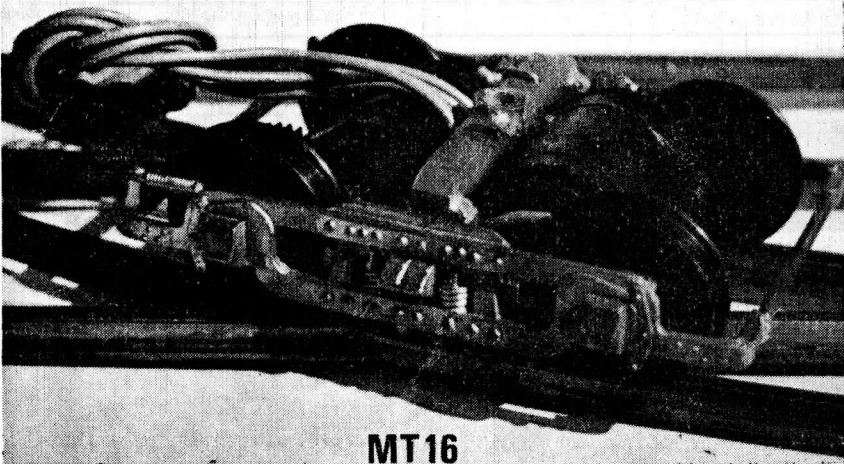
Although not shown in the illustrations each unit comes with approximately ten inches of "super-flex" motor leads. This allows for direct roof connections on most cars.

For PCC "Motor Movers" see our Q-Drives-PCC Page.



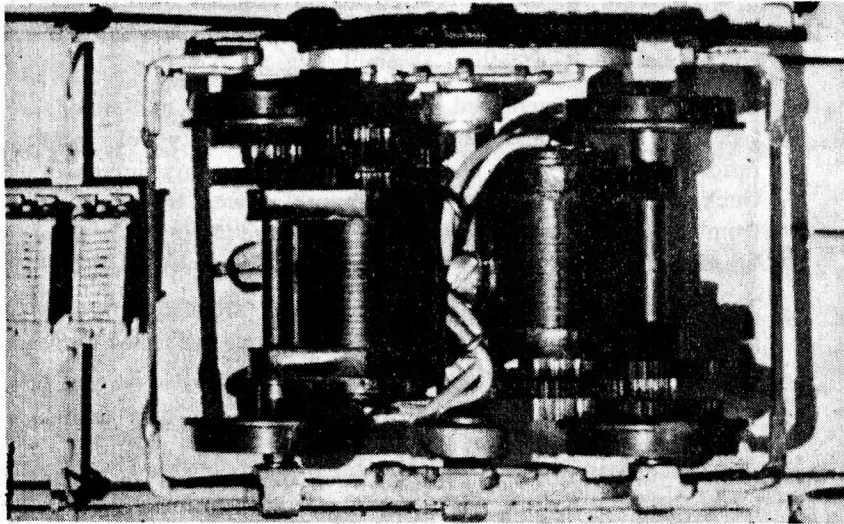
Above: The MT11 (Left) with its 2032 motor and oversize gears can be used for very heavy duty applications. Despite the larger motor it compares favorably in size to the M10 (Right) with its smaller 1630 motor.

# Q-Drives, NWSL "Magic Carpets" Mounted on our frames. O Scale



**MT16**

Above: The MT16 above has the smaller 1220 motor which makes this double motor unit completely underfloor.



## Power Trucks

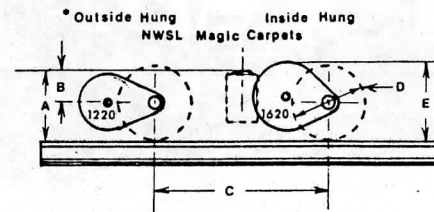
### Magic Carpet Specifications

MC I	1220 Motor (Small Motor Case)
	27-1 Ratio
	30", 33" 36" or 40" Wheels
MCII	1620 Motor (Large Motor Case)
	19.4-1 Ratio
	33", 36" or 40" Wheels
MCIII	1220 Motor (Small Motor Case)
	17.9-1
	26" or 28" Wheels

**Prototype Note:** Outside Hung and Inside Hung refer to the manner in which motor units were mounted on the prototype. For example the 39E Brill used Outside Hung motors whereas the 8430 Baldwin used inside hung.

Q-Car Type		MT16				
Wheelbase Limits	C	NONE				
Wheel Diameter	B	26"	28"	30"	33"	36"
Rail to Bolster Top	A	.551	.573	.596	.624	.656
Axle to Bolster Top	D	.281				
Rail to Top of Motor Case	E	MC I, III	.618			
Rail to Top of Motor Case	E	MC II	.795			
Motor Type		1220 MC I & III - 1620 MC II				
Capacity		Light to Heavy Duty*				
Gear Type		Brass & Delrin				
Wheelsize Limits		26" Through 36"				
Available Ratios		17.9-1, 19.4-1, 27-1				

\* Depending on the number and size of the units used.



**Q-Car Company, Inc.**

## Special Features:

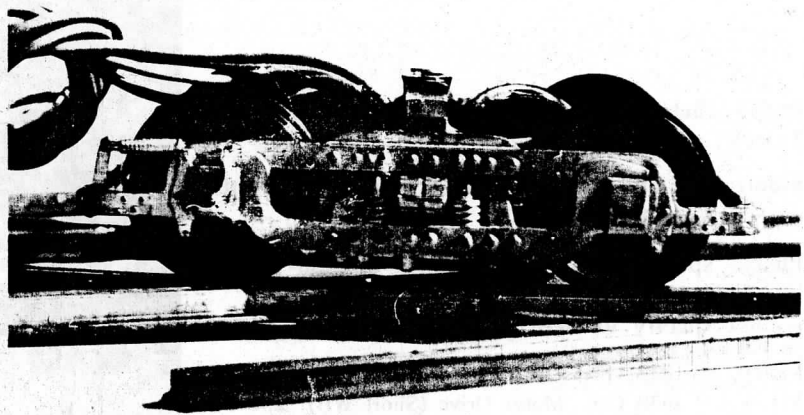
Underfloor mounting.  
Mounts easily in any car.  
Looks prototypical.

Prices include one Power and one Trailer Truck

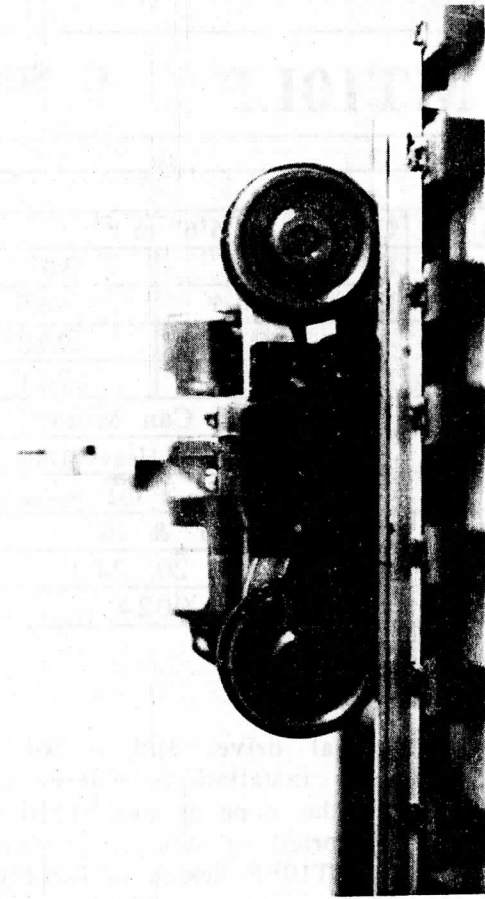
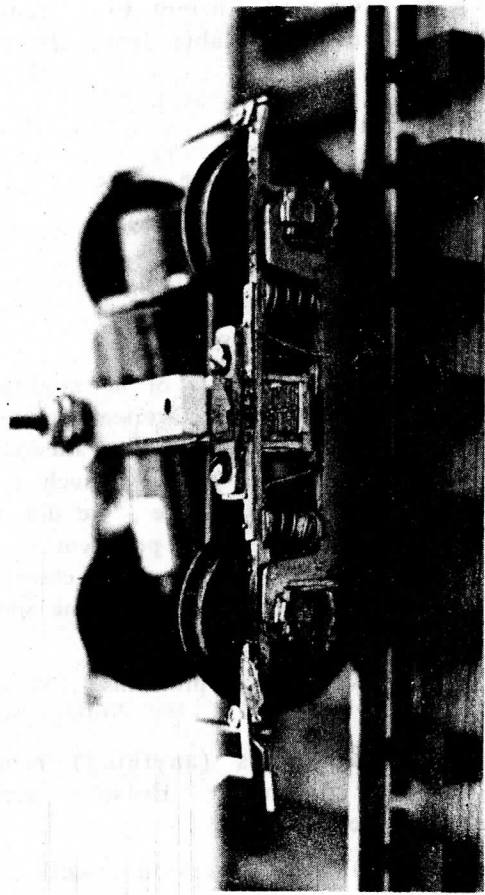
Sideframes and car bolsters are included with each assembled truck.

Please specify Insulated (2-Rail) or Non-Insulated (Overhead) when ordering. If you do not specify we will provide Non-Insulated.

**MT16 Double Motor Drive...\$112.30**



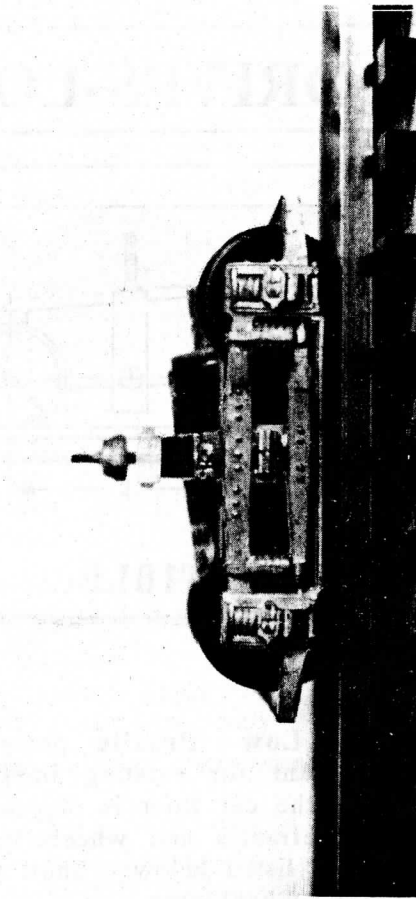
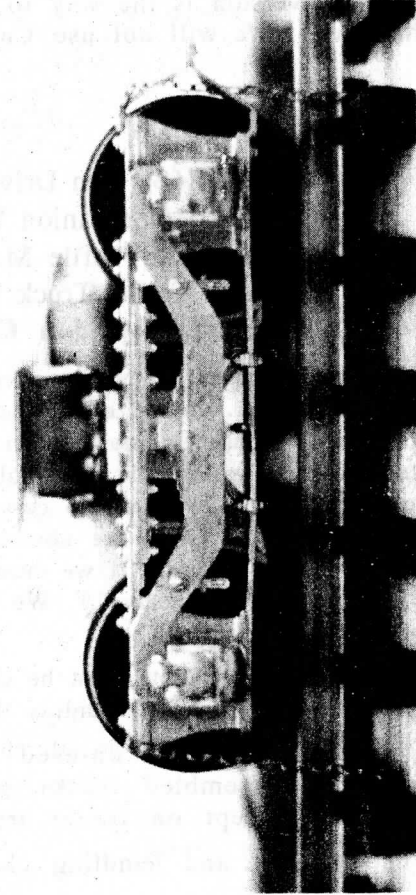
Above: This side view of the MT16 shows just how low a profile this truck has.



A variety of **MT10LP** imported truck conversions is shown above and below. Please note that the low profile makes these conversions either below floor or just above floor.

**Upper Left:** Car Works MCB Type, **Upper Right:** Car Works LRV. **Lower Left:** Car Works Steeple-cab. **Lower Right:** Although not a conversion this is a Q-Car 27F1 MT10LP and it illustrates the low profile of the LP type of truck.

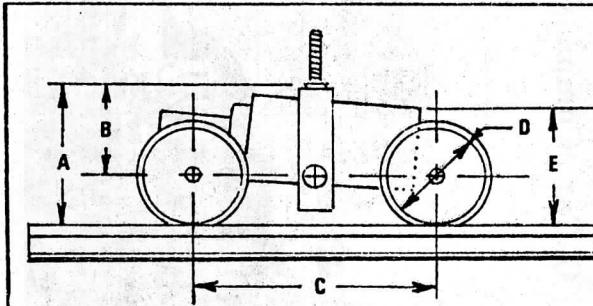
**Q-Car Company, Inc.**





# Q-DRIVES-LOW PROFILE MT10LP

O Scale



**MT10LP**

Wheelbase Limits	C	6'6" to 8'	
Wheel Diameter	B	33"	36"
Axle to Bolster Top	D	.540	.565
Rail to Bolster Top	A	.910	.940
Rail to top of Motor Case	E	.710	.741
Motor Type	1630 Can Motor		
Capacity	Medium to Heavy Duty		
Gear Type	3/16 Steel Worm & 3/32" Bronze Gear		
Wheelsize Limits	33" & 36"		
Available Ratios	16, 20, 24-1		
Horsepower	.0024		

This Low Profile power unit is designed as a conventional drive, and is an ideal replacement for existing imported, or domestic drives, or on new installations where cutting through the car floor is objectionable. The price of the MT10LP is the same as our MT10 using our sideframes and wheelsets. Conversion pricing of existing imported or domestic assembled trucks is listed below. Short wheelbase trucks become MT10s; the MT10LP design is for 6'6" or greater wheelbases.

We consider customer supplied sideframes (from imports or other domestic manufacturers a conversion. So if you have a set of frames that you would like to turn into a power or trailer truck conversion is the way to do it. We can supply quite a few types of Current Line frames at this time. We will not use Current Line frames if the frame needed is available from Q-Car.

## Conversion Truck Pricing

(Customer Supplied Trucks or Sideframes)

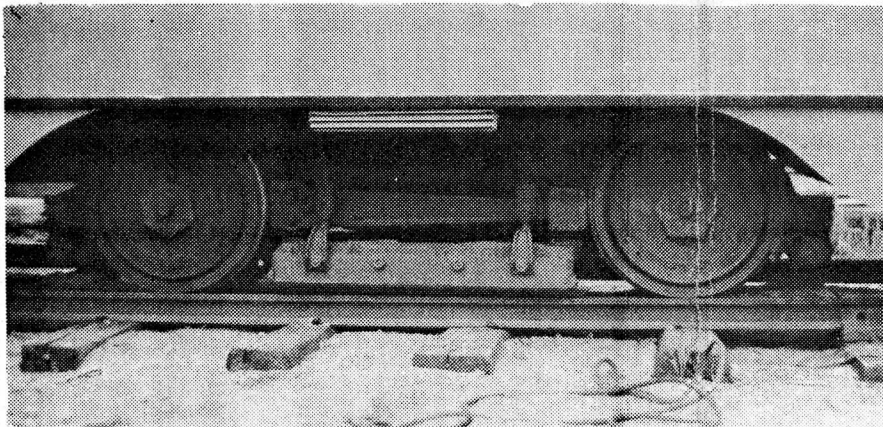
MD04 1630 Can Drive w/Belt, Wheels & Pulley.....	\$63.15
MDW01 Companion Wheelset w/Pulley.....	4.60
B002 Low Profile Motor Bolster (See Special Note Below)**.....	7.45
WS000 Trailer Truck Wheelsets*.....	6.20
<b>Total Conversion Cost of Customer Supplied Trucks.....</b>	<b>\$81.40</b>

**A Special Note:** Some imported models are designed to accept this drive with little or no modification to the car floor. Some even have reusable bolster assemblies. However, some do not. Overseas builders do not have a consistent standard in truck and bolster design. Each truck is unique. We have attempted to stock a great variety of truck bolsters for all these different designs. When we do not have such a stock bolster and when we have to customize the installation we now must charge for this service - we did not in the past. The charges are nominal but there is a charge. \*\*We typically charge \$2.50 per item we must modify in conversions. If we must remove the floor from the car body we charge \$2.50 (in many cases floors do not have to be removed.) We always try to be reasonable, but we must charge for additional time spent on each model.

\*Trailer truck wheelsets must be changed to match our wheel profile to avoid derailing problems. We cannot guarantee good operation unless the trailer wheelsets are changed

On conversions all un-used wheelsets, motors, spare parts, and screws (anything) removed from the assembled trucks supplied to us are returned to the customer. Bolsters are not returned (except on trailer trucks where the stock bolsters are retained.

The shipping and handling charge of \$4.00 must be included with all conversion orders.



# CLARK

## B2 TRUCKS

This photo is of the earliest Clark B2 truck equipped with Magnetic Track Brakes, Tread brakes, and Resilient Wheels.

### Clark Equipment Company B2 PCC Truck

Q-Car has duplicated this revolutionary truck in 1/4" Scale in our usual rivet for rivet weld for weld fashion. Each segment of the original Clark B2 design is replicated in as exact a fashion as is humanly possible given its diminutive size. Even the magnetic brake coil is reproduced in accurate cross section, and the magnetic brake tie angle irons are included (brass version only.)

The B2 truck was used on all ERPCC cars. The IT and SEPTA Double ended PCC looking St. Louis built cars were not true PCC's and used a St. Louis Car Co. truck.)

The axle mounted Westinghouse brake actuator was the most common brake cylinder used however some properties used the frame tube mounted GE or Westinghouse actuators. (West. not currently available) The GE externally mounted brake cylinder is available along with a choice of Resilient (Large Single Nut) or Super Resilient (Multiple Nut) wheels.

The lost wax set (Powered version temporarily discontinued) consists of 24 castings (22 brass, 2 White metal.) The truck tube frame assembly of this set consists of accurately scaled 6" diameter frame tube, pedestal tubes with retainers, axle housings with spring pockets, even the mounting holes for the Houdialle rotary shock absorbers are present! The swing link housing and the swing links are duplicated along with the lower swing link grease fitting!.

Because of the scale nature of the tube frame assembly it could not be reproduced in the lower cost white metal. So to allow for a competitively priced truck we created a non-scale white metal truck tube frame. To this we have mounted the scale white metal torsion bar, white metal magnetic brake and four super detailed brake shoes. The white metal frame is a one piece casting.

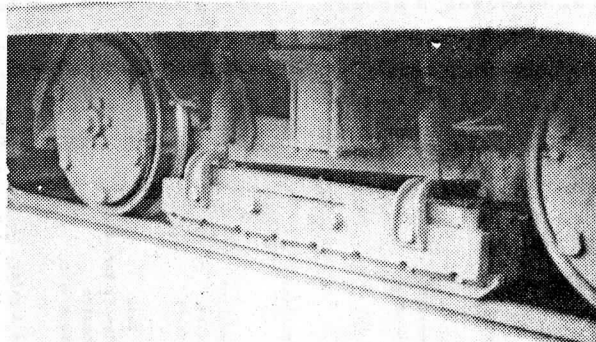
The design of the Clark B2 truck was so unique we could not utilize our standard truck or car bolster. In place of these we fashioned exact replicas of the PCC truck and car frame bolsters. These are not the usual functional type of bolsters but are scale duplicates of the originals. The only deviation from the Clark design is the use of the standard 3-38 bolster screw. These bolsters are included with the above mentioned lost wax or white metal frame set.

When ordering just a frame set, whether lost wax or white

metal you must have the ability to assemble your wheelsets.. These frames are internal with solid bearings, and as such wheels and axles are pressed on **after** the frames are assembled. Because of this wheelsets, which are available separately are sold in dis-assembled sets only. Also the wheels in these sets are specially made to allow for the use of our super detailed Resilient or Super Resilient wheel covers (you cannot use just any 26" wheel if you plan to use the wheel covers)

Both the lost wax and the white metal main tube frames have built in bearings; hence no separate bearings are needed for these sideframes. For the powered versions of both the lost wax and the white metal sets a silicone brass gear box and a 20-1 ratio bronze gear has been utilized. This combined with a 1630 can motor (1626 on MT10PLW) produce a rail to bolster top dimension of approximately .938" (15/16") , and a top speed of approximately 57 Scale MPH. The top speed of the prototype was advertised at 47 MPH although the PCC could and did reach higher speeds.

WS422 26" PCC Wheelset, specify Resilient or super Resilient Wheels, Dis-Assembled, Pair.....	8.85
CS238 PCC White Metal Frame, Set Includes Bolsters....	15.65
23826 PCC Trailer Truck, Specify Equipment, Pair.....	37.20
MT10P PCC Power & Trailer Truck, Set	
Includes Car Bolsters.....	89.80
B238 PCC Lost Wax Frames, Set.....	88.85
B23826 PCC Lost Wax Trailer Truck, (Lost Wax Trailers ARE still available), Pair.....	116.15
MT10PLW PCC Power & Trailer (Lost Wax Version NOT currently Available).....	170.95
Prices Effective 1 January 1994	



Along with the GE actuators (Large cylinder between the mag brake return springs) this B2 is equipped with Super Resilient wheels.



B-2 TRUCKS

TRUCK EQUIPMENT USAGE by CITY



City	Series	Wheel Type	Tread Brakes	Drum Brakes		City	Series	Wheel Type	Tread Brakes	Drum Brakes	
				Air	West-GE					Air	West-GE
Baltimore	7001-7425	Res	Yes	No	No	Vancover	All	Res	Yes	No	No
	7426-7428	Res	No	Yes	No	Washington	1101-1122	Res	No	No	No
Birmingham	All	Res	No	No	No		1123-1145	Res	Yes	No	No
Boston	3001	Res*	Yes	No	No		1146-1175	Res	No	No	Yes
	3002-3021	S Res	Yes	No	No		1176-1195	Res	No	No	Yes
	3022-3071	S Res	Yes	No	No		1196-1213	S Res	No	No	Yes
	3072-3096	Res	Yes	No	No		1214-1233	S Res	No	No	Yes
	3097-3146	Res	Yes	No	No		1234-1250	S Res & S Res	No	No	Yes
	3147-3171	Res	Yes	No	No		1251-1267	Res	No	No	Yes
	3172-3196	S Res	Yes	No	No		1268-1301	S Res	No	No	Yes
	3197-3221	S Res	No	Yes	No		1302-1317	S Res	No	No	Yes
	3222-3321	S Res	No	Yes	No		1318-1332	S Res	No	No	Yes
	3322-3346	Res	No	Yes	No		1333-1366	Res	No	No	Yes
Brooklyn	All	Res	Yes	No	No		1367-1399	Res	No	No	Yes
Chicago	4002-4051	Res	Yes	No	No		1400-1431	Res	No	No	Yes
	4052-4061	S Res	Yes	No	No		1432-1464	Res	No	No	Yes
	4062-4371	S Res	Yes	No	Yes		1465-1501	Res	No	No	Yes
	4372-4411	S Res	Yes	No	No		1502-1529	Res	No	No	Yes
	7002-7034	Res	Yes	No	No		1530-1567	Res	No	No	Yes
	7035-7114	S Res	No	No	Yes		1568-1599	Res	No	No	Yes
	7115-7274	S Res	No	Yes	No						
Cincinnati	1000	Res	Yes	No	No						
	1001-1126	Res	No	No	No						
	1127-1174	S Res	No	No	Yes						
	1200	Res	Yes	No	No						
Cleveland	All	S Res	No	Yes	No						
Dallas	All	Res	No	No	No						
Detroit	100-101	Res	No	Yes	No						
	102-180	Res	No	No	No						
	181-286	Res	No	No	Yes						
El Paso	All	Res	Yes	No	No						
Illinois Terminal	All	S Res	No	No	No						
Johanson	All	Res	No	Yes	No						
Kansas City	501-585	S Res	No	No	Yes						
	701-724	S Res	No	No	Yes						
	725-799	S Res	No	No	Yes						
Los Angeles	3001-3125	Res	Yes	No	No						
	3126-3165	S Res	No	No	No						
Louisville	All	S Res	Yes	No	No						
Minneapolis	300-423	S Res	No	Yes	No						
	1547	Res	Yes	No	No						
Montreal	All	Res	Yes	No	No						
Newark	All	S Res	No	No	No						
Pacific Electric	All	S Res	Yes	No	No						
Philadelphia	2001-2020	Res	Yes	No	No						
	2031-2090	S Res	Yes	No	No						
	2091-2200	S Res	Yes	No	No						
	2201-2240	S Res	No	No	Yes						
	2241	S Res	No	No	Yes						
	2242-2260	S Res	No	No	Yes						
	2261-2318	S Res	No	No	Yes						
	2319-2330	S Res	No	No	Yes						
	2501-2680	S Res	Yes	No	No						
	2701-2800	S Res	No	Yes	No						
Pittsburgh	1000	Res	Yes	No	No						
	1000-1564	Res	Yes	No	No						
	1600	Res	No	Yes	No						
	1601-1699	Res	No	Yes	No						
	1700-1724	Res	Yes	No	No						
	1725-1799	Res	No	No	No						
St. Louis	All	S Res	Yes	No	Yes						
San Diego	All	Res	Yes	No	No						
San Francisco	1001-1002	S Res	Yes	No	No						
	1004-1040	S Res	Yes	No	No						
	1006-1040	S Res	No	Yes	No						
	1101-1189	S Res	No	No	Yes						
Shaker Heights	3, 27	S Res	No	No	Yes						
	50-49	S Res	No	No	Yes						
	450-451	S Res	No	No	Yes						
	4630-4665	S Res	No	No	Yes						
Toronto	4000-4199	Res	Yes	No	No						
	4200-4299	Res	Yes	No	No						
	4300-4399	Res	Yes	No	No						
	4400-4499	Res	No	No	Yes						
	4500-4599	S Res	No	No	Yes						
	4600-4699	S Res	Yes	No	No						
	4700-4799	S Res	No	No	Yes						
	4800-4899	S Res	No	No	Yes						
	4900-4999	S Res	No	No	Yes						

**Notes:** As the above chart shows when tread brakes were used drum brakes were not.

When the Air operated drum brakes were used NO external brake actuator or brake could be seen. The entire brake system was internal to the truck. (A small air cylinder operated a drum brake at the drive shaft end of the axle gear housing - two per truck.)

When the GE Electric Actuator was used a vertical cylinder was attached to the outside of the truck main tube frame. This device operated a spring loaded drum brake attached to the motor drive shaft. The cylinder's top and bottom was held together with four external bolts.

When the Westinghouse Electric Actuator was used an automotive started motor with solenoid looking device (actually one large solenoid) was attached to the outside of the truck main tube frame. Like the GE actuator this device operated a spring loaded drum brake attached to the motor drive shaft.

Two brake actuators were required for each truck on GE or Westinghouse trucks.

\*Eventually Boston eliminated rubber wheel inserts and utilized plain steel wheels.

\*Because Los Angeles operated on narrow gage track the EPCC had to develop another truck. This generally became known as the B1. Although the design elements of this truck were similar to the B2, it would not be historically correct to indicate that Los Angeles used the B2.

**Acknowledgement:** Thanks is due to Scott Ruffner for the above Clark Truck Equipment listing. It supersedes the 1 June 1985 listing. Thanks is also due to James C Hogan who provided the Washington portion of the above list. We welcome any additional information you may wish to provide. We will incorporate it into future revisions.