

THE **A**LL-NATION LINE

MANUFACTURE AND DISTRIBUTOR "O" SCALE MODEL RAILROADS

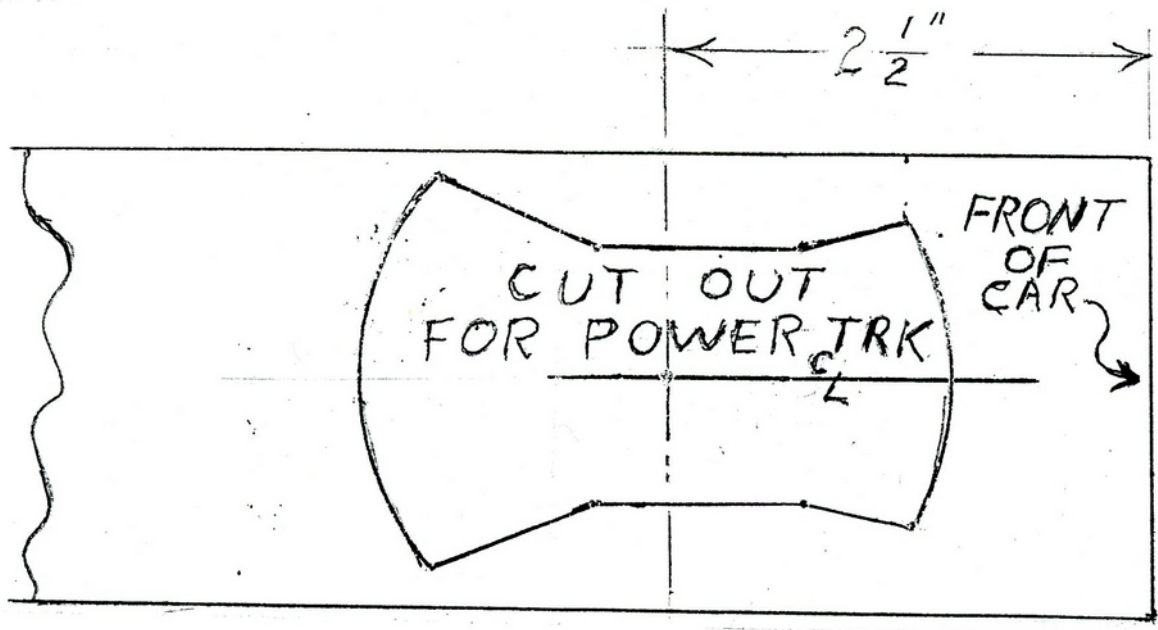
Gas Electrics



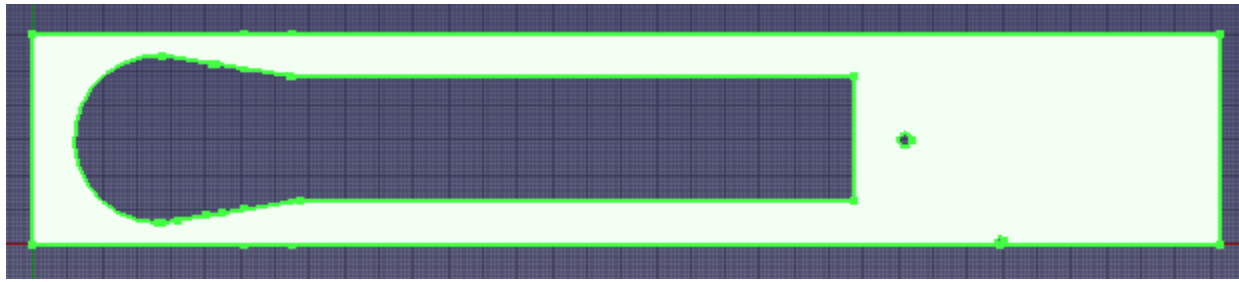
The Gas Electric or otherwise known as Doodlebugs were prevalent on many railroads as they transitioned passenger rail services in the past. Always a favorite of model builders and on operating layouts, All Nation is

bringing back these kits that were produced by Wm. K. Walther and All Nation Line years ago. Below are original drawings and instructions for suggested assembly. While many of the original kit parts were cast, today we 3D Print the sides, ends and some details for better resolution.

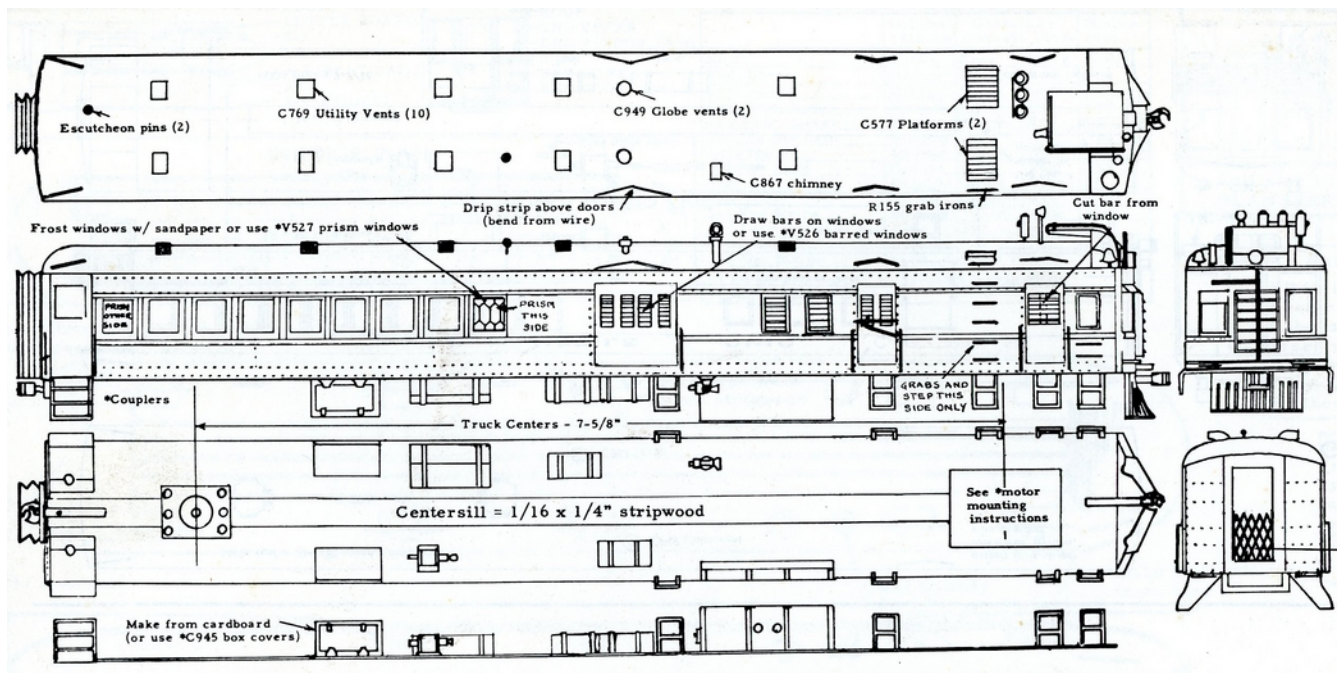
In the past, these kits accommodated various motoring implementation from Walthers, to All Nation drives and even Wagner/Current Line or Q-Car type transmissions and drives. Thus, on some of the older kits the following pattern as often include if upgrading from a dummy to power whereby the modeler could cut out the wood floor for the power truck.



Although we still provide a basic kit with the wood roof and floor, All Nation will be transitioning to a 3D printed floor with the following look.

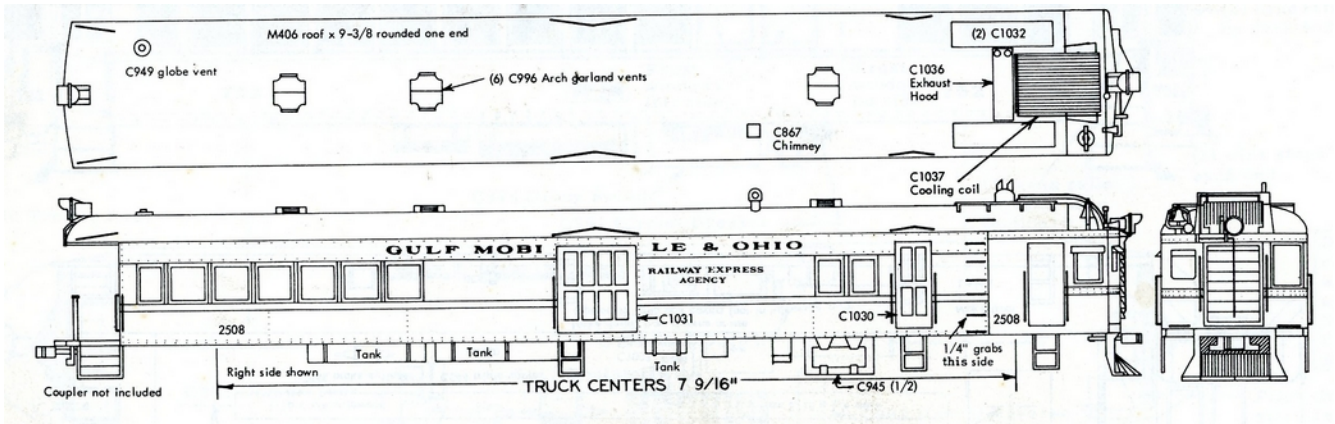


The following drawings in the past were included in the kits for modelers.



75"
C&NW GAS ELECTRIC

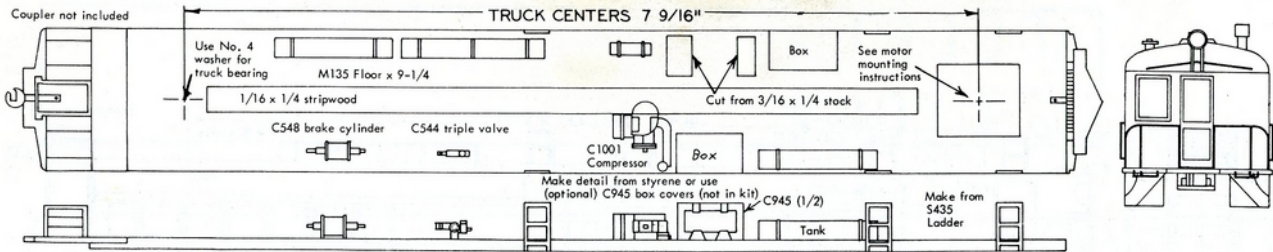
Example of unit numbering #9927. One unit of this type was used in the "Namekagon" train, with a (Walthers 7880 w/gas elec. roof) coach. During the time when the C&NW used this gas car, it was painted in three different color schemes. The first scheme was dark green roof, coach green body, black underbody, and a red and white striped front. The second color scheme was that of the "Namekagon" which was a black roof, green letterboard, yellow window panel, green lower side, black underbody, and black striping along the window panel. The final color scheme was that of the streamlined trains, i.e., black roof, green letterboard, yellow the balance of the body, and black underbody and striping. This type of gas car could also be found on the CR&P, Reading, AT&SF, SP, and NYC.

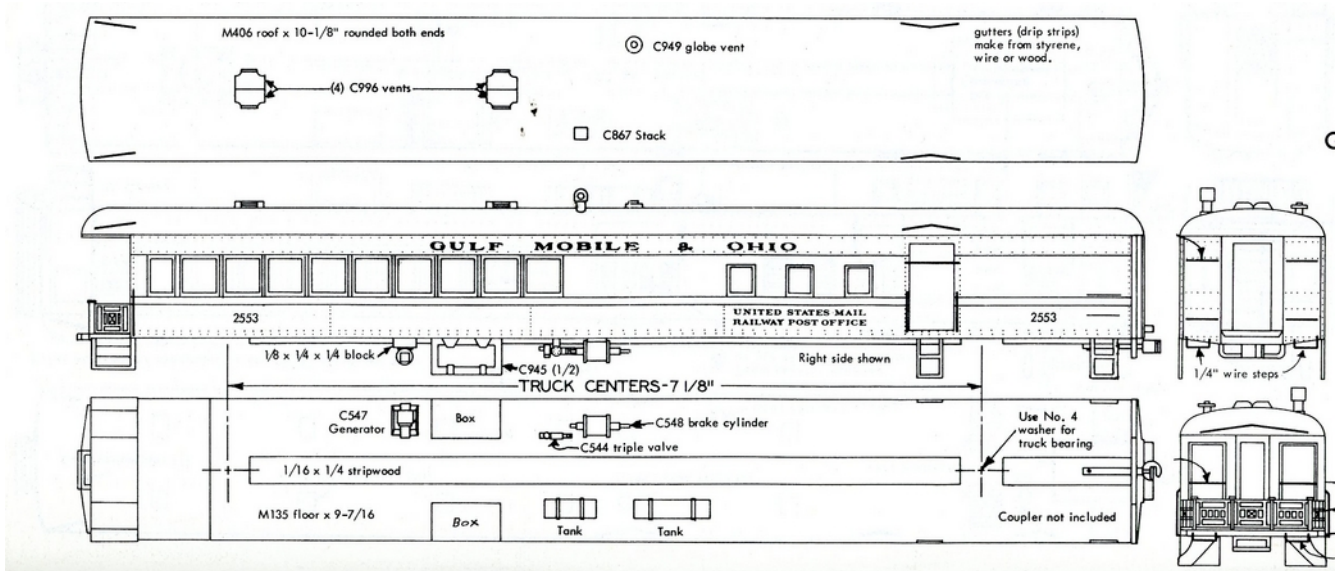


75' MOTOR CAR

GM&O GAS ELECTRIC

Motor Cars originally C & A. M-15, M-16, and M-18. Re-numbered to GM&O #2506, #2508, and #2509. Units were painted maroon and red, with gold striping. After several years of usage, the units had their coach seating removed, and their windows boarded up to provide more baggage space.

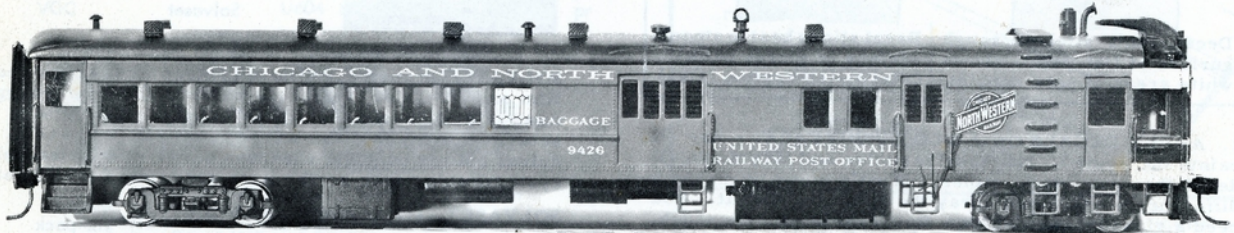




75' TRAILER CAR

GM&O GAS ELECTRIC

Trailer Cars, were numbered #2551, #2552, and #2553. The Cars were painted in the same color scheme as the motors. Trains were made up of one motor car, and one postal/chair trailer.



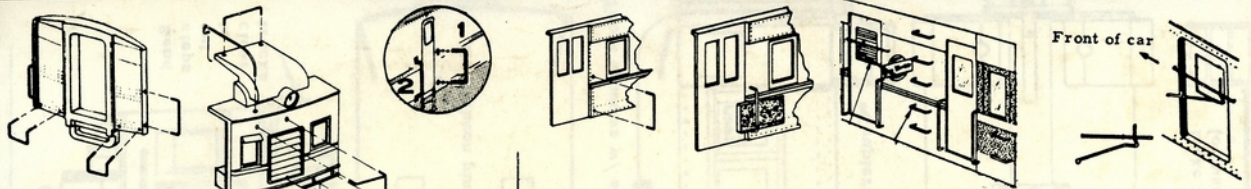
6451 C&NW Gas Electric "Doodlebug"



6456 GM&O Trailer Car

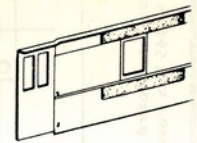
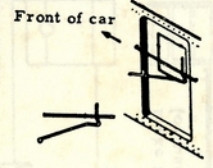


6455 GM&O Power Car

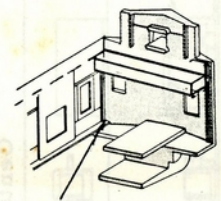
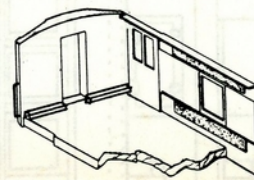


1. Check roof and sides to be sure they are exact same length.
2. Install hand rails, wire parts, and other details on both ends. (Refer to plans for location.) Fit into #70 holes OR flatten on face of end as shown. Cement or solder in place. **WARNING: Do NOT touch hot iron to soft metal castings.**

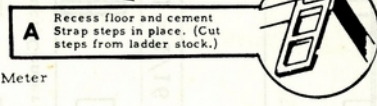
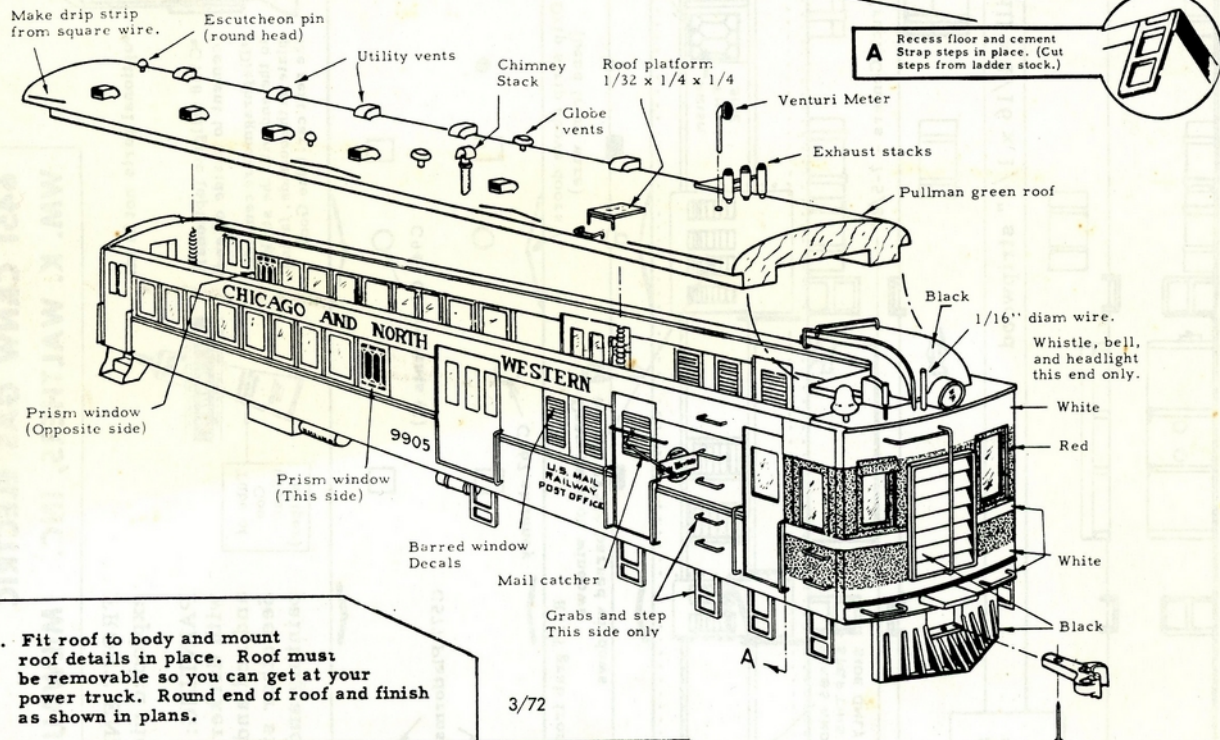
3. Install hand rails, wire parts, and strap steps on sides. (Optional: Strap steps may be notched into and cemented to floor.) Cement doors behind openings in sides.
Cardboard under hand rail maintains space from side while cementing. Strips of cardboard (cut from cereal box) on inside will support window material. Cement window material in place **AFTER** painting.



4. Cement ends to floor and fit sides to body. You will have to cut away part of the floor to provide clearance for doors and strap steps. Bow sides slightly to fit them **INSIDE** the lips on the ends. Cement sides in place. Cement steps in place. (See detail A).
5. Turn car over and complete underbody detail. Cut hole in floor and mount power truck. Trim floor (bevel) where it shows beneath the vestibule door. (Refer to plans for location of parts.)

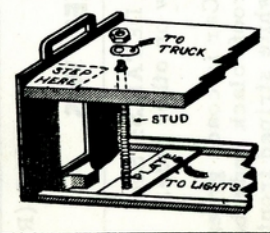


Sides fit inside lip on end.



6. Fit roof to body and mount roof details in place. Roof must be removable so you can get at your power truck. Round end of roof and finish as shown in plans.

3/72

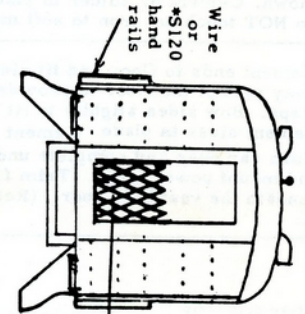
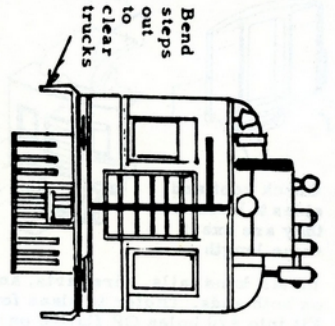


REMOVABLE ROOF HARDWARE

Locate roof plates so studs will pass through vestibules or washrooms and will not be visible from outside. Drill 3/32" hole in floor. After assembly, cut off excess stud. Use of stud as an electrical connection eliminates unsightly wires.

6451 CANW GAS ELECTRIC
WM. K. WALTHERS, INC. MILWAUKEE, WIS.

67-0201 B (Rev)

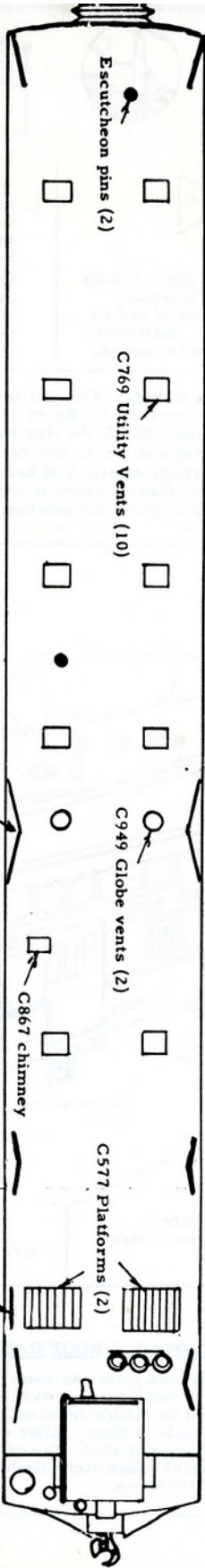


*optional parts not in kit
 *C768 tailgate (optional) (cement to inside of end)
 *Diaphragms are cemented to the end with the striker plate on the outside, facing the next car. (Use Goo)



Tube of Goo (Your helper²)

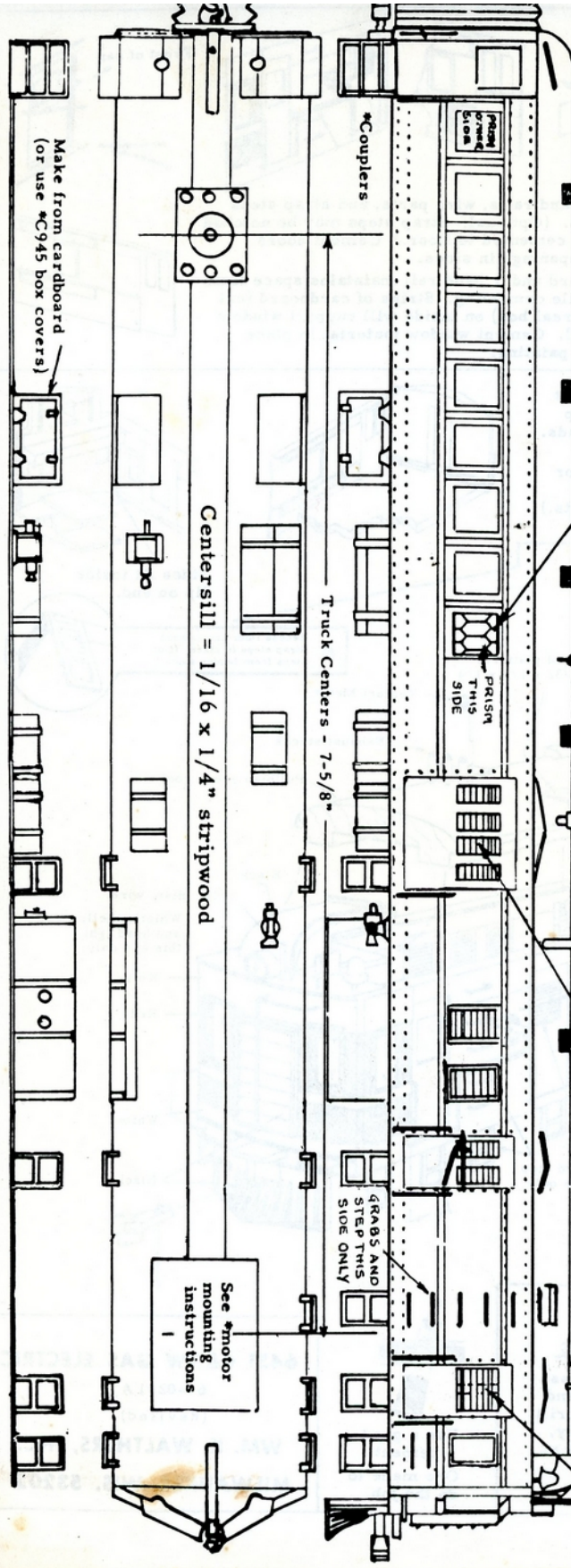
FRONT END DETAILS: See exploded view on other side.
PAINTING: Car is coach green with darker roof, black underbody, and red and white striped front. See other side for additional painting and lettering details.



Frost windows w/ sandpaper or use *V527 prism windows

Drip strip above doors (bend from wire)

Draw bars on windows or use *V526 barred windows



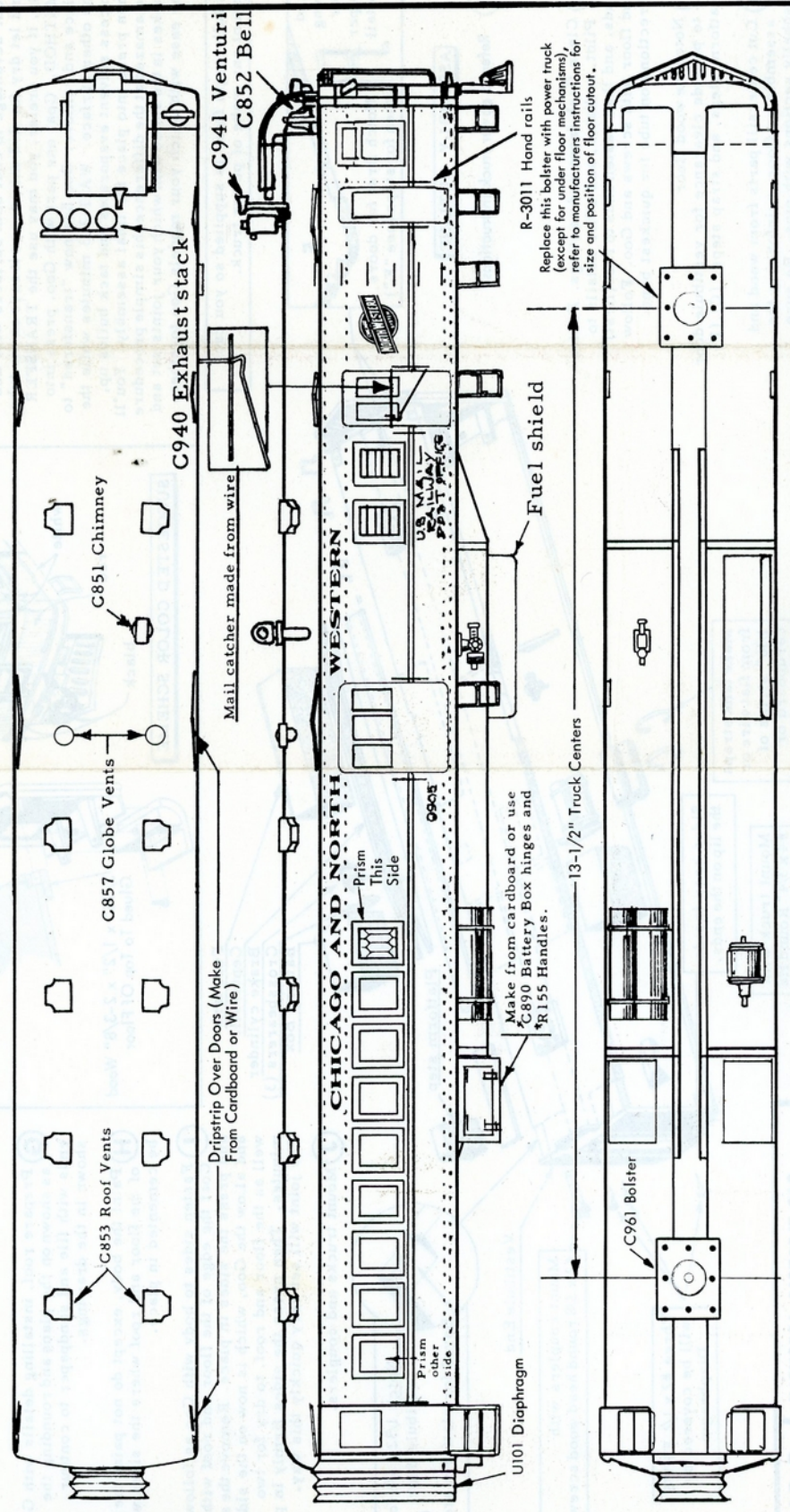
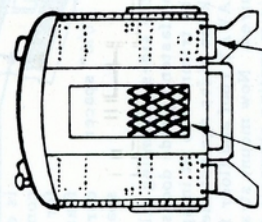
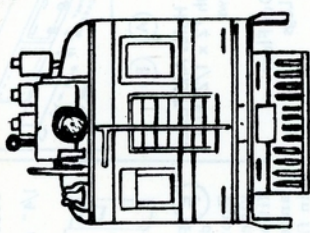
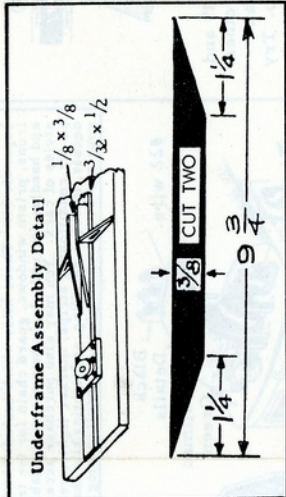
3642 SCALE: 1/8" = 1'-0"
(1/2" O' Scale)

GAS ELECTRIC

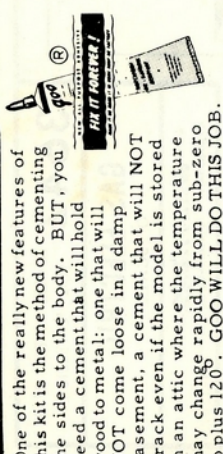
"O" SCALE

W. K. WEAVER CO.
4080 JAMES ST. NEWBURGH, N.Y. 10950
64-1202A

NOTE: Gas Electric cars were frequently used to haul a trailer coach in branch line or local service.



HEY, HERE'S SOMETHING NEW!

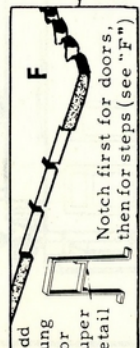


One of the really new features of this kit is the method of cementing the sides to the body. BUT, you need a cement that will hold good to metal: one that will NOT come loose in a damp basement, a cement that will NOT crack even if the model is stored in an attic where the temperature may change rapidly from sub-zero to plus 120°. **GOO WILL DO THIS JOB.**

We have tested Goo continuously since 1949 and we KNOW it will do this job (and most any other ordinary job). Don't take a chance with an ordinary cement. Your models deserve Goo. Try it. Give Goo a chance to show you some new tricks.

FOLLOW DIRECTIONS. It is important and to our advantage to coat both surfaces with Goo and let dry for 2-3 minutes as it says on the tube. If, if you prefer, you may use the TRANSFER METHOD. Coat one part with Goo, press into place and remove. Goo has now "transferred" to the other surface. WAIT 2-3 minutes while the excess solvent evaporates and tack builds up, then press into place for final assembly. You'll be amazed at the difference this simple procedure makes in the speed with which your joints set and ease with which your models Goo together.

full-length floor is supplied so you can mount any make of power truck.



ASSEMBLY OUTLINE

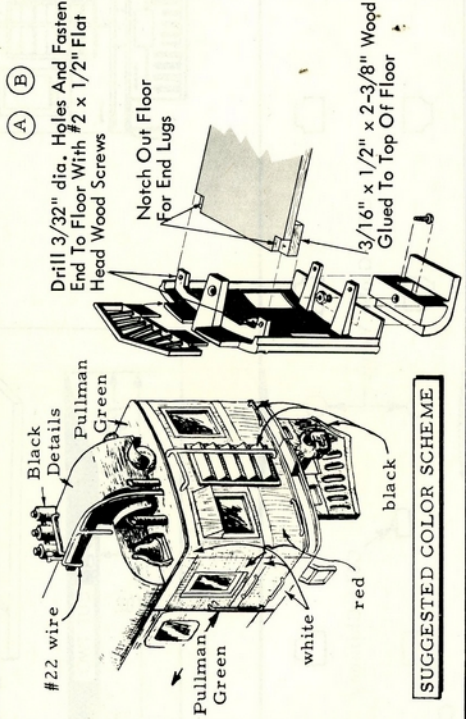
Refer to power truck instructions.

Clean flash from end castings. Fasten Pilot, radiator, and other details to ends, and then fasten ends to roof (first) and floor with screws and Goo. Follow directions on tube for quickest bond.

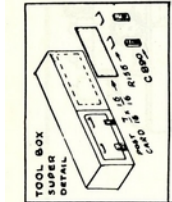
Notch the wood floor to provide clearance for vestibule door, platform steps, and strap steps. (C), (F).

Cut centersill parts from wood and assemble on floor, reinforcing the ishly sections with pins. Be sure the centersill is centered on the floor.

SUPER DETAILS In order to keep the price of the basic kit as low as possible, the most desirable parts (usually referred to as "optional" on the plans) in a separate kit. These kits, which include hand rails, grab irons, prism windows, guard chain for the trucks, hinges and handles for underbody boxes are available for all styles of cars. You may also purchase accessories such as air conditioning strips, marker lights, ventian blind decals, interior detailing, and lighting kits to make your car a real show-piece. Consult catalog for list.



SUGGESTED COLOR SCHEME



(A) (B)

Drill 3/32" dia. Holes And Fasten End To Floor. With #2 x 1/2" Flat Head Wood Screws

3/16" x 1/2" x 2-3/8" Wood Glued To Top Of Floor

(E) Complete the underbody details with both standard and optional superdetail parts, scaling any needed dimensions from the plan.



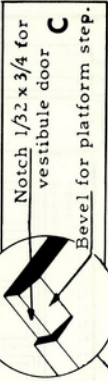
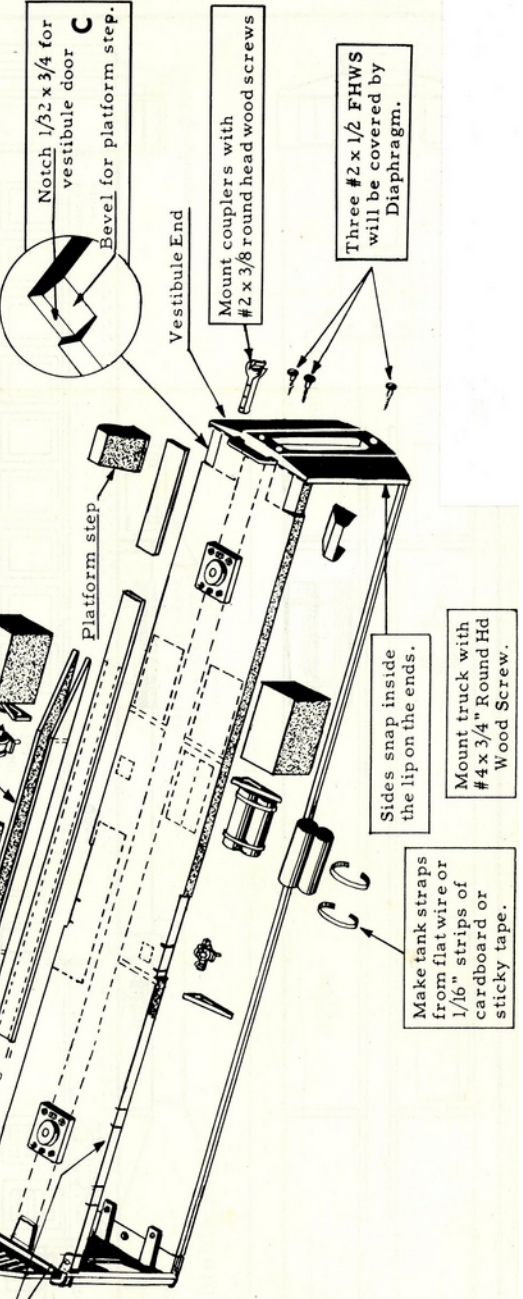
(F) Prepare the sides, mounting all desired details and fastening side doors in place. Doors must be trimmed to fit in space provided. Check the sides against the body for fit and CUT AWAY roof and floor for clearance as required. Now mount strap steps in floor and in mounting channels as shown. Paint sides; then install window material. See (F) for mounting strap steps.

(G) Prepare roof, installing details with Goo as shown on the plans and rounding the ends with file and sandpaper to contour shown in the drawings.

(H) Paint the body, except do not paint the edge of the floor and roof where the sides will be cemented in place.

(I) Fasten sides to body with Goo as follows: Coat the edge of the floor and roof with Goo and press the sides in place. Remove the side and allow the Goo, which is now on the sides, as well as the floor and roof, to dry for two minutes. Then press the sides firmly in place. The joint will set very quickly this way.

(J) Mount trucks and couplers.



Notch 1/32 x 3/4 for vestibule door

Bevel for platform step

Mount couplers with #2 x 3/8 round head wood screws

Three #2 x 1/2 FHWS will be covered by Diaphragm.

Sides snap inside the lip on the ends.

Mount truck with #4 x 3/4" Round Hd Wood Screw.

Make tank straps from flat wire or 1/16" strips of cardboard or sticky tape.



