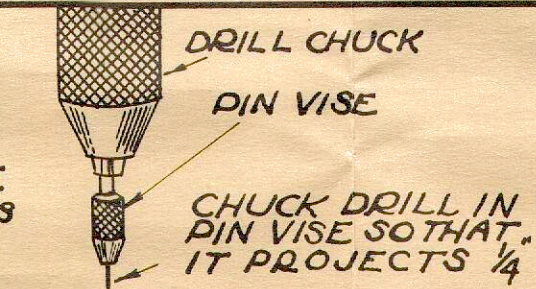


ELBOW SHOULD REST UPON BENCH TO STEADY THE DRILL. THE WEIGHT OF HAND DRILL ALONE IS ENOUGH TO FEED # 68 DRILLS.

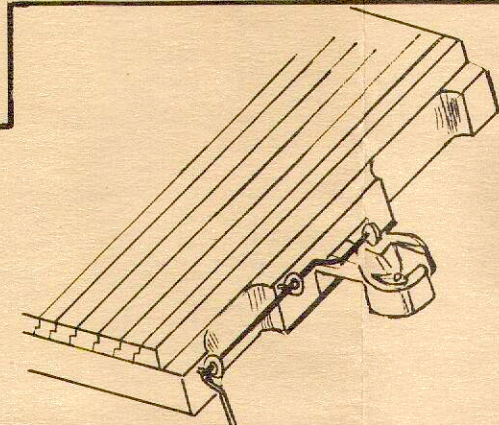
METHOD OF PREVENTING BREAKAGE OF SMALL DRILLS.

DRILL HOLES FOR EYELETS WHICH ARE MADE OF #20 WIRE WITH #66 DRILL — FILE ENDS OF EYELETS AND FORCE IN POSITION WITH PLIERS — BEND WORKING ARM TO SUIT.

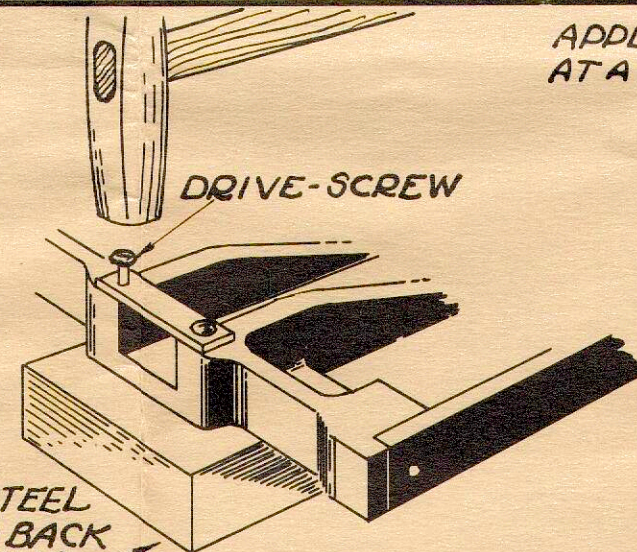
METHOD OF MOUNTING FOR AUTOMATIC COUPLER



USING A PIN VISE WHEN CHUCK WILL NOT HOLD EXTRA SMALL DRILLS

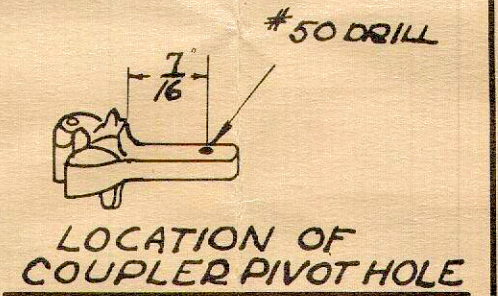


APPLYING DRIVE-SCREWS WITH A HAMMER

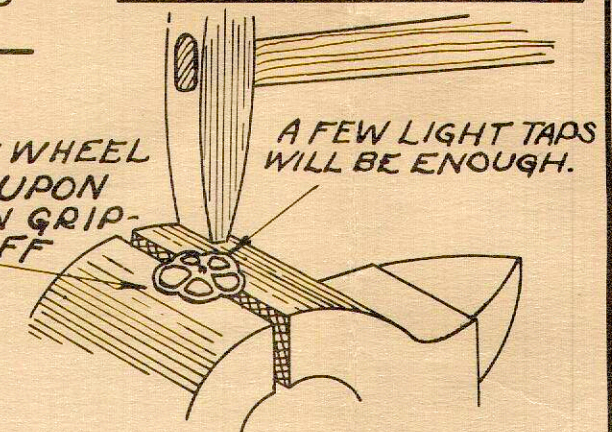


APPLY ONE SCREW AT A TIME.

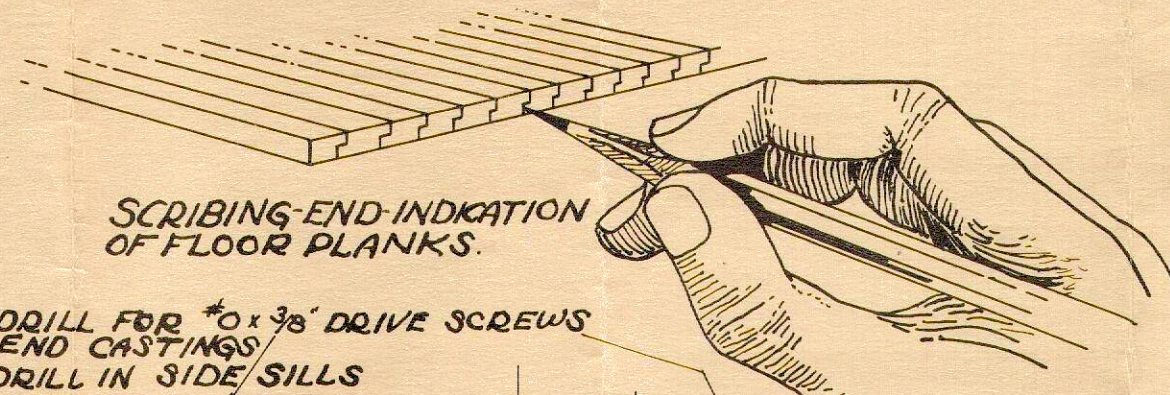
APPLYING DRIVE-SCREWS WITH A VISE.



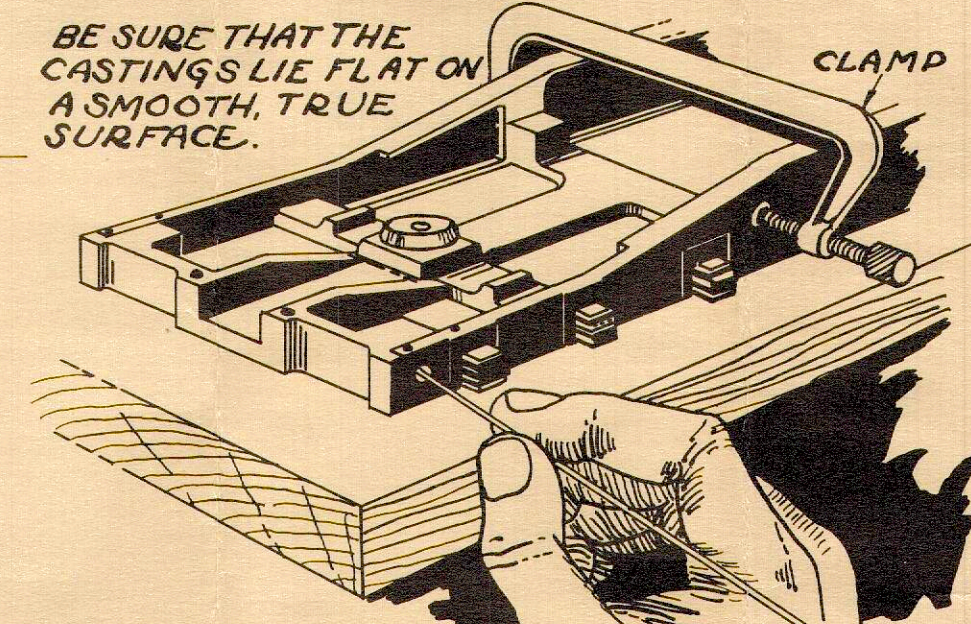
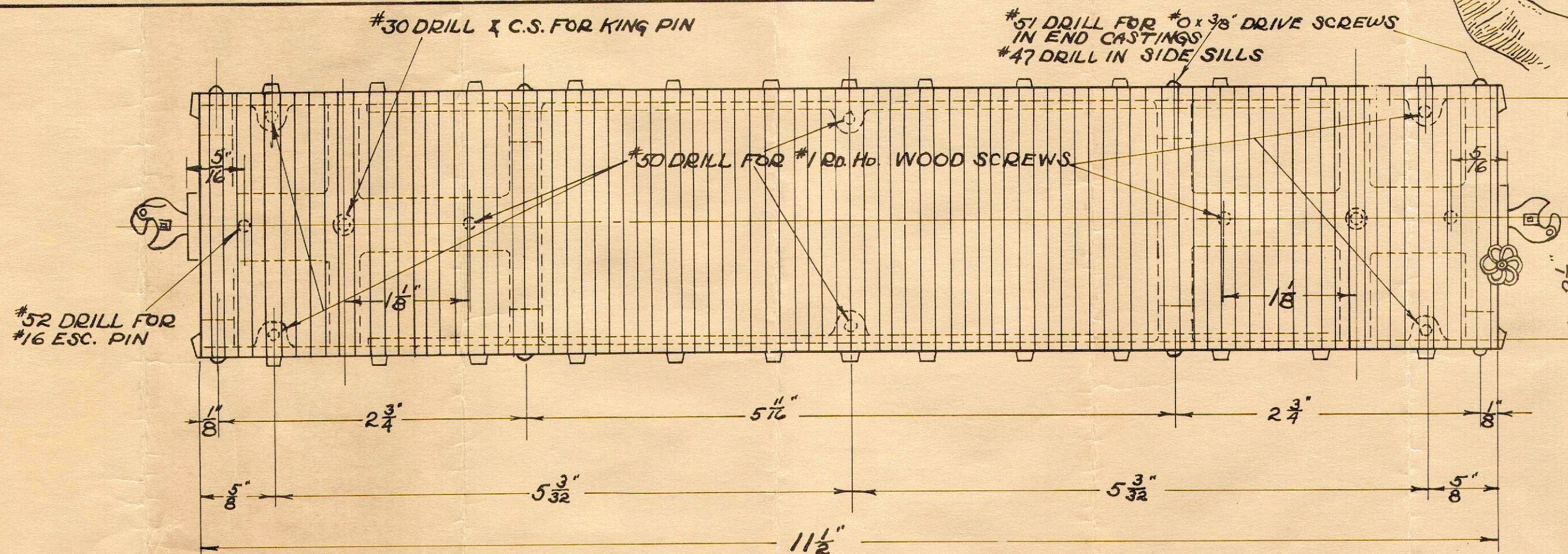
BE SURE THAT WHEEL DOES NOT REST UPON VISE JAWS WHEN GRIPPING BRAKE STAFF



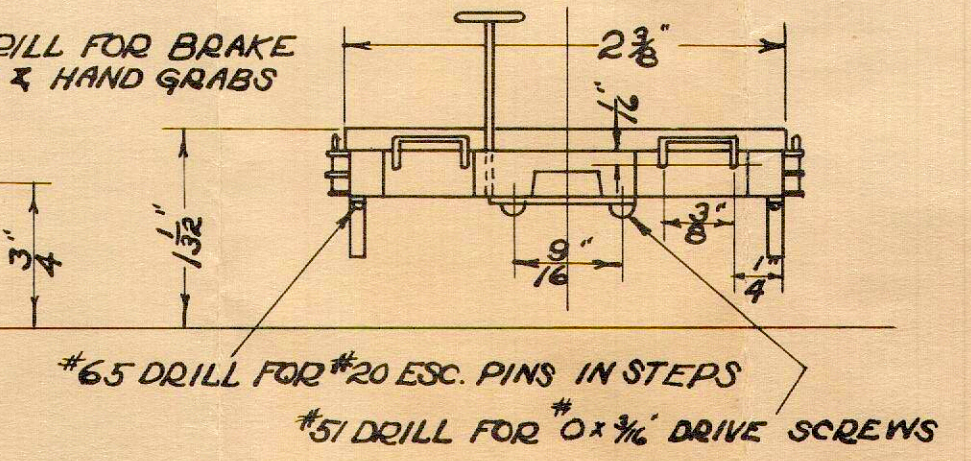
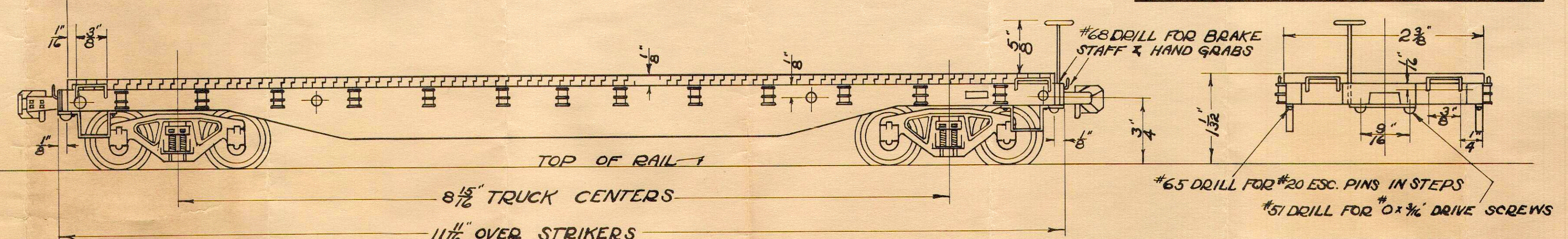
RIVETING BRAKE STAFF AT WHEEL



#51 DRILL FOR #0 x 3/8" DRIVE SCREWS IN END CASTINGS #47 DRILL IN SIDE SILLS



TRANSFERRING HOLES TO END CASTINGS WITH A SCRIBER.



SCALE MODELS INC.
1516 So. WABASH AVE.
CHICAGO, ILL.

46 FOOT 50-TON CAPY.
FLAT CAR — 0" GAUGE

DR. SB
TR. ED.
C.H.
DATE: 9-10-38

1453

THIS SUPERSEDES DRG. OF SAME NO. DATED 4-23-36