

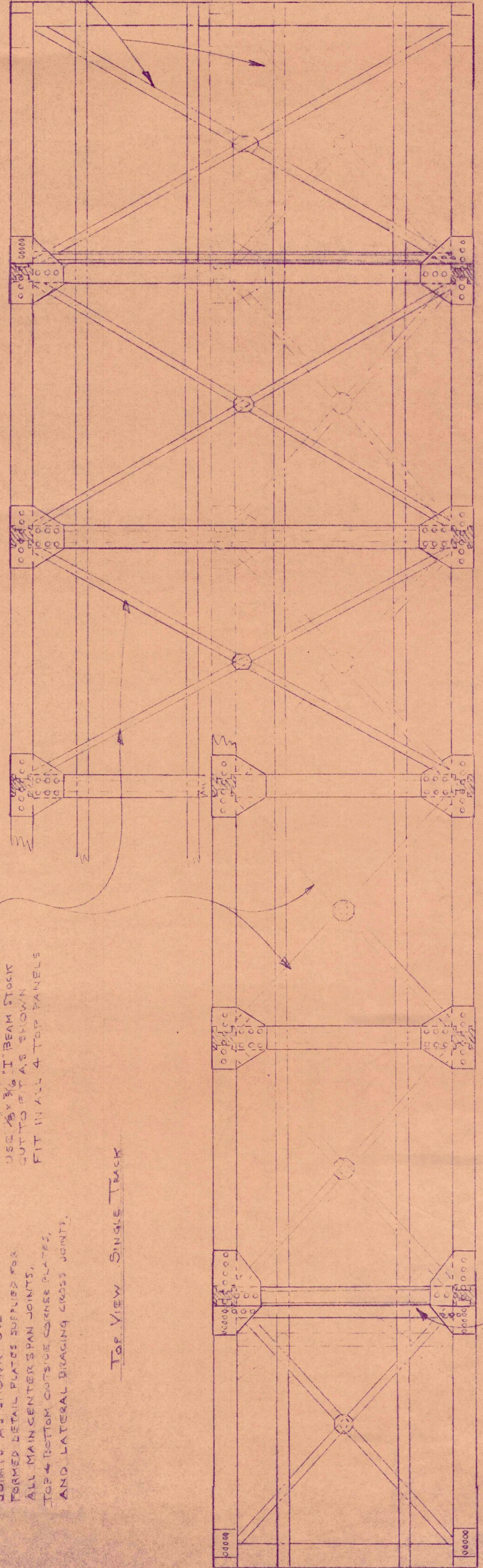


NOTCH LATERAL CROSS BRACING IN CENTER TO FIT INTO EACH OTHER. GLUE PLATE OVER JOINT.

ALUMINUM RIVET PLATES WITH RIVET DETAIL ARE GLUED OVER ALL STRUCTURAL JOINTS AS SHOWN - USE FORMED DETAIL PLATES SUPPLIED FOR ALL MAIN CENTER SPAN JOINTS, TOP & BOTTOM OUTSIDE CORNER PLATES, AND LATERAL BRACING CROSS JOINTS.

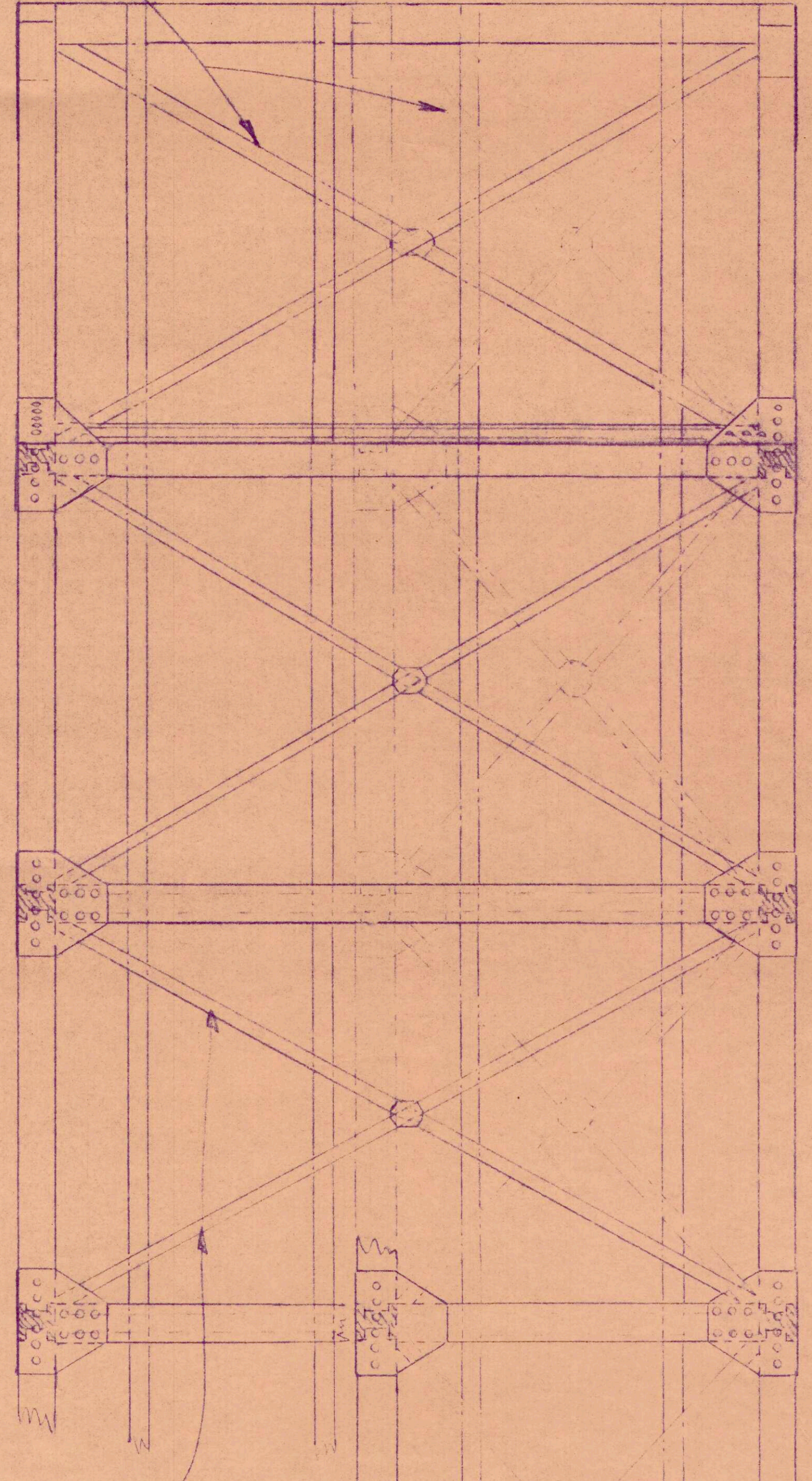
UPPER LATERAL BRACING USE  $\frac{1}{8}$  x  $\frac{3}{8}$  I BEAM STOCK CUT TO FIT AS SHOWN FIT IN ALL 4 TOP PANELS

TOP VIEW SINGLE TRACK



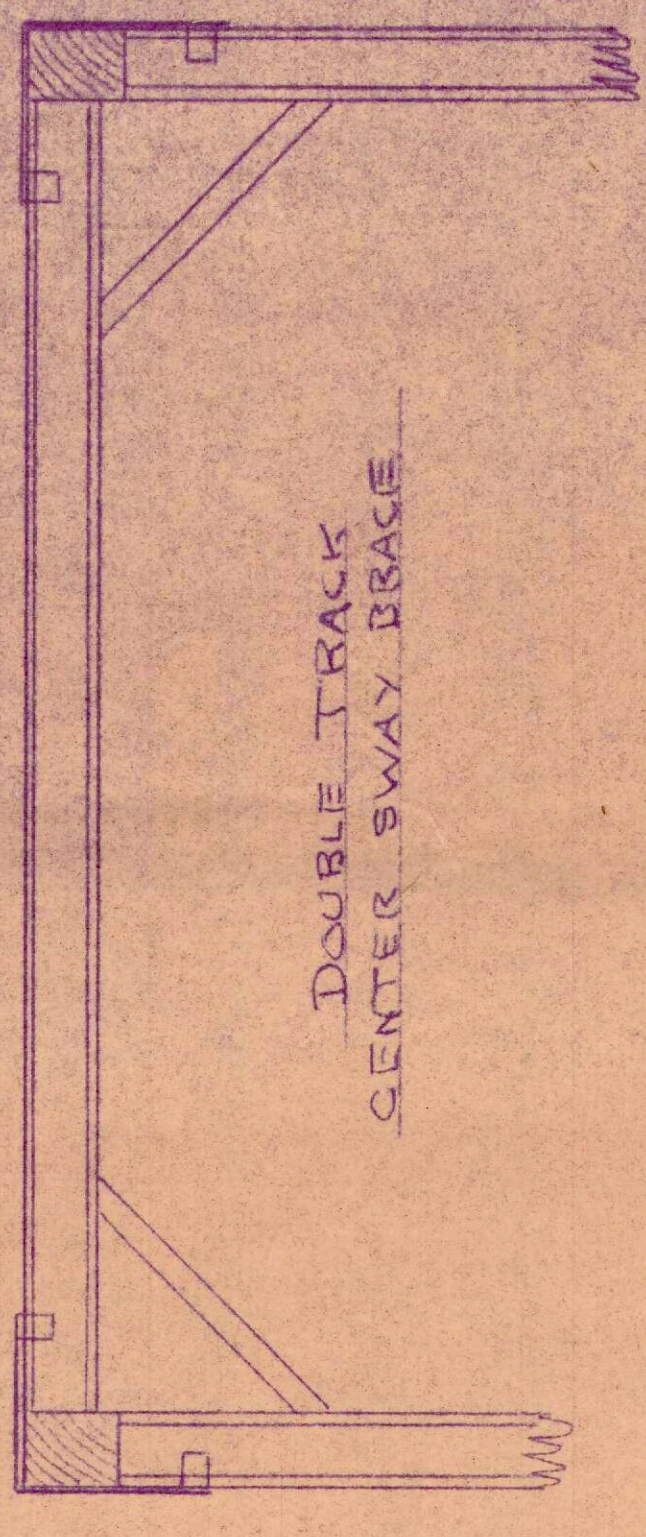
LOWER LATERAL BRACING USE  $\frac{1}{8}$  x  $\frac{3}{8}$  I BEAM STOCK CUT TO FIT AS SHOWN FIT IN ALL 6 BOTTOM PANELS

TOP VIEW DOUBLE TRACK

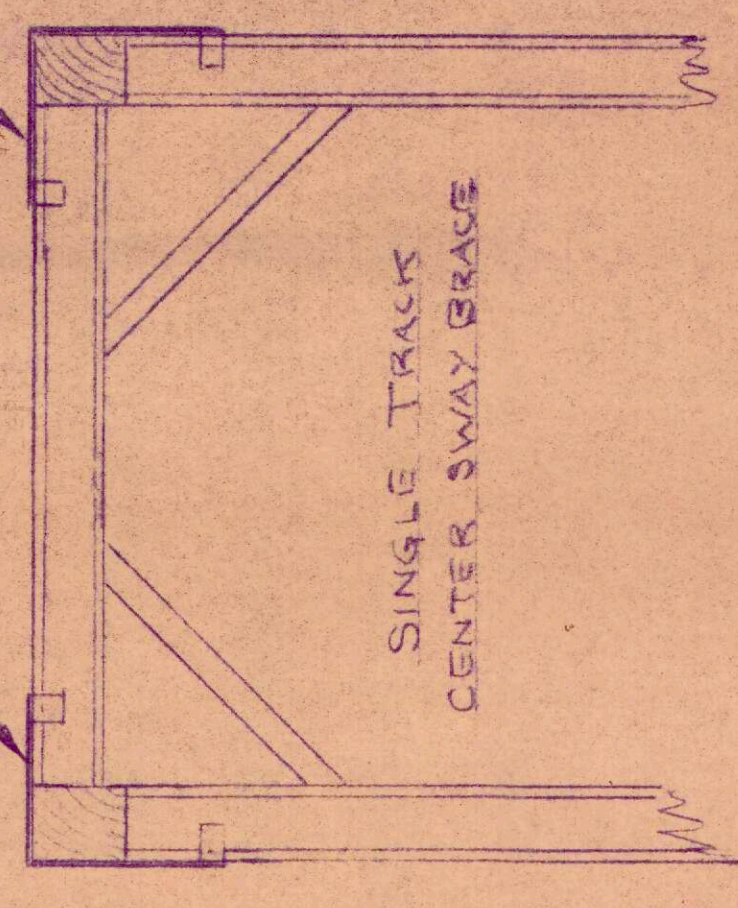


NOTE: MAIN JOINT RIVET PLATES HAVE 4 END TABS. BEND TABS 90° AND FIT PLATE OVER ASSEMBLED JOINT. REMOVE AND PUT GUE ON INSIDE OF PLATE & RELOCATE ON JOINT & CLINCH THE 4 TABS AROUND THE BEAM EDGES.

DOUBLE TRACK CENTER SWAY BRACE



SINGLE TRACK CENTER SWAY BRACE



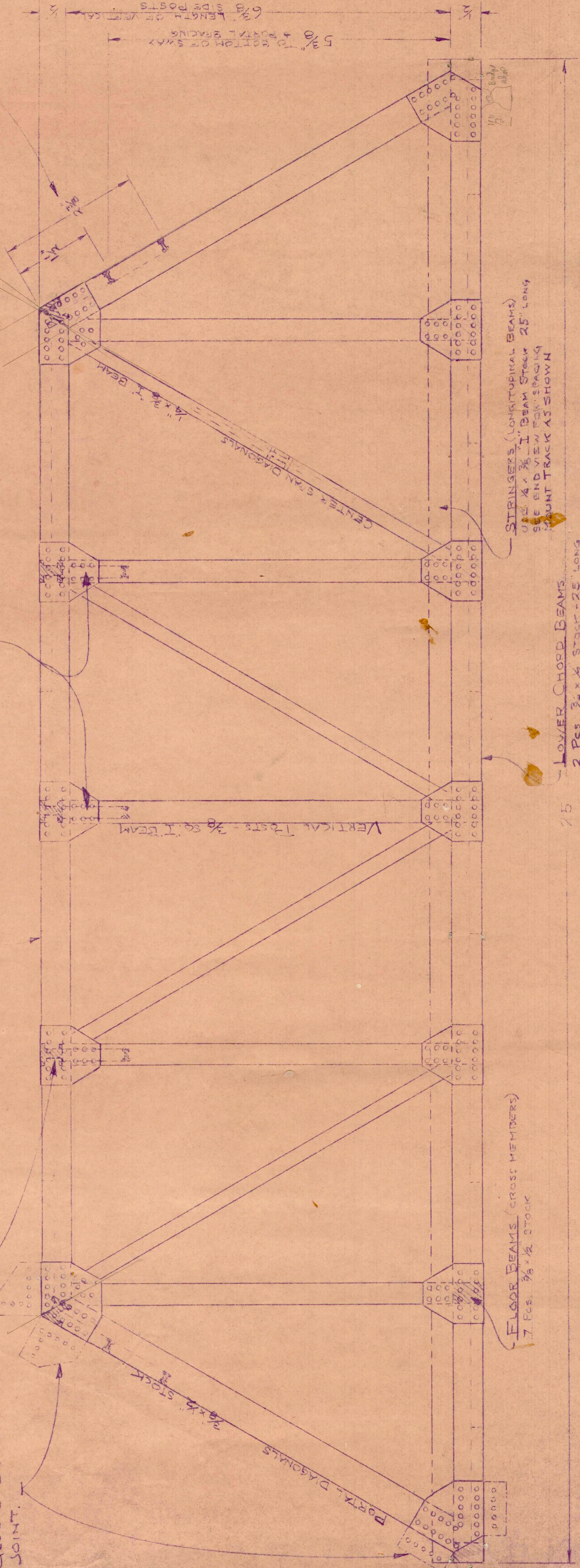
PLACE UPPER & LOWER END PLATES AS SHOWN. BEND ENDS DOWN. GLUE OVER ASSEMBLED JOINT.

TOP BEAMS (CROSS MEMBERS) USE  $\frac{1}{8}$  x  $\frac{3}{8}$  I BEAM STOCK POSITION AS SHOWN

UPPER CHORD BEAMS 2 PCS.  $\frac{3}{8}$  x 2 STOCK - 16 1/2" LONG MITER ENDS TO DOTTED LINE

SWAY BRACING USE  $\frac{1}{8}$  x  $\frac{3}{8}$  I BEAM STOCK CUT TO FIT - SEE DETAIL - USE BETWEEN 3 VERTICAL CENTER SPAN POSTS

PORTAL BRACING ON BOTH ANGLED ENDS USE  $\frac{1}{8}$  x  $\frac{3}{8}$  I BEAM STOCK CUT TO FIT AS SHOWN SEE DIM. BELOW



LOWER CHORD BEAMS 2 PCS.  $\frac{3}{8}$  x  $\frac{1}{2}$  STOCK - 25" LONG

STRINGERS (LONGITUDINAL BEAMS) USE  $\frac{1}{8}$  x  $\frac{3}{8}$  I BEAM STOCK 25" LONG SEE END VIEW FOR SPACING MOUNT TRACK AS SHOWN

MOUNT TRACK TO TOP OF STRINGERS SPOT GUE GARGAVES TYPE TO STRINGERS. FOR HIGH RAIL PLACE A 1/4 THICK CLEAT UNDER THE STRINGER AND NUT SCREWS THEM.

25" O GAUGE BRIDGE  
TYPICAL THROUGH TYPE RIVETED PRATT TRUSS CAN BE BUILT EITHER SINGLE OR DOUBLE TRACK FOR LONGER SPANS USE MULTIPLES  
LITTLE MIAMI PRODUCTS, 4418 LINDEN AVE. CINCINNATI, OHIO

PLEASE READ INSTRUCTION SHEET

# 24 P.S.D.  
DRAWN BY TAP 1391