

Assembly Instructions
36 and 40 Foot Wood Reefers
O GAUGE - BY ALL-NATION
Scale or Tinplate



Before starting to build this kit, read these instructions carefully.

1. Check parts list. Then clean flash from all die cast parts.
2. Paint with _____ railroad paints, the following parts:
Two 6 rung ladders - (Dull Black)
Four car steps - (Dull Black)
Three strips of moulding (1/32 x 1/8") - (Box Car Red)
While those are drying you may proceed with the kit.
3. Assemble wood ends, floor and roof, using #20 wire brads and cement. Make certain that ends are square with floor and roof.
4. Mount the body bolsters so that the center of the truck mounting hole is $1-9/32$ " from the end of the car. (Use the four #2 x 3/8" Fl. Hd. wood screws.) Trim to length and fit the milled wood center beam in place between the body bolsters. Crossbraces are then mounted as shown in the drawing. These should be tapered so that the end will be flush with the car side when it is in place.
5. SCALE ONLY - Insert end sill pins in the holes in the end sills to form the coupler pockets. Drill two #60 holes in the lugs on the back of the end sills. Use the #20 x 5/8" wire brads to fasten the sills to end of car. Cement 3/32 x 1/2 x 1/2 coupler spacer to bottom at each end between bolster and end of car. Couplers are now mounted with #2 x 3/8" round-head wood screw. Be sure that they swing free without binding.
6. AB BRAKE SET. Mount as shown in drawing.
7. ROOF WALK. Cut 19 roof walk supports from 1/16" square strip. Space equally so that roof walk is evenly supported. Roof walk can be mounted with cement or by drilling #65 holes and using escutcheon pins. Metal end supports should be fastened to the car ends with escutcheon pins and to the roof walk by drilling a #65 hole in walk ends, using an escutcheon pin as a rivet.

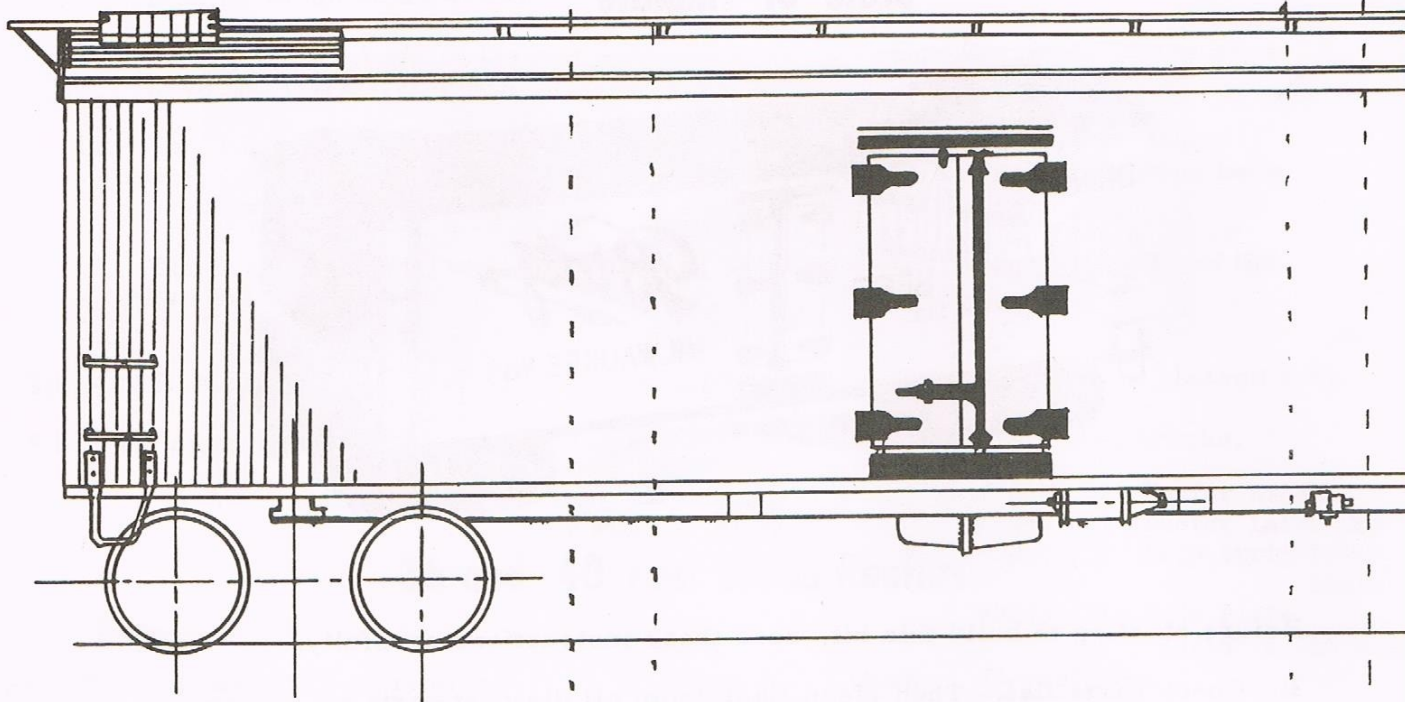
BACK

FORWARD

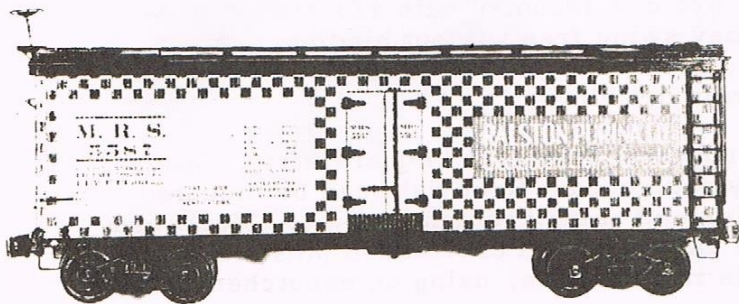
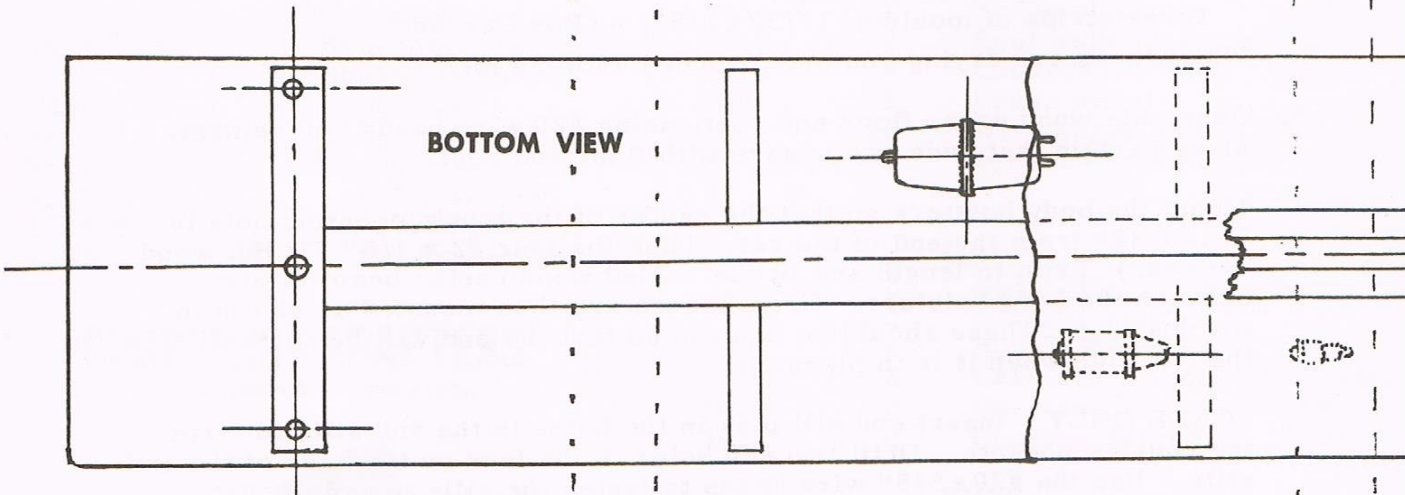
For 36 Foot Car
FOLD PLAN AS MARKED

FORWARD

B



BOTTOM VIEW

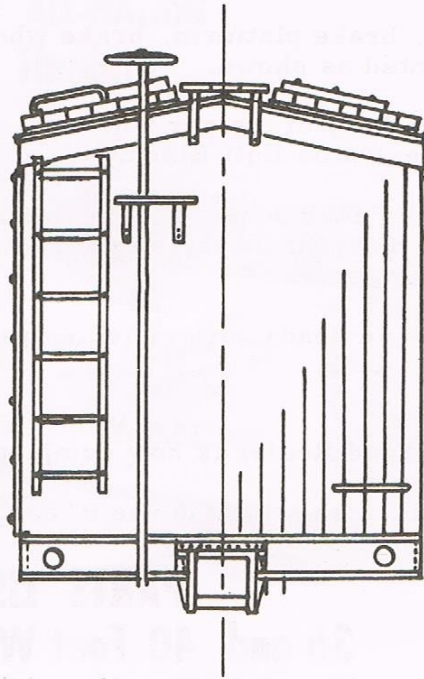
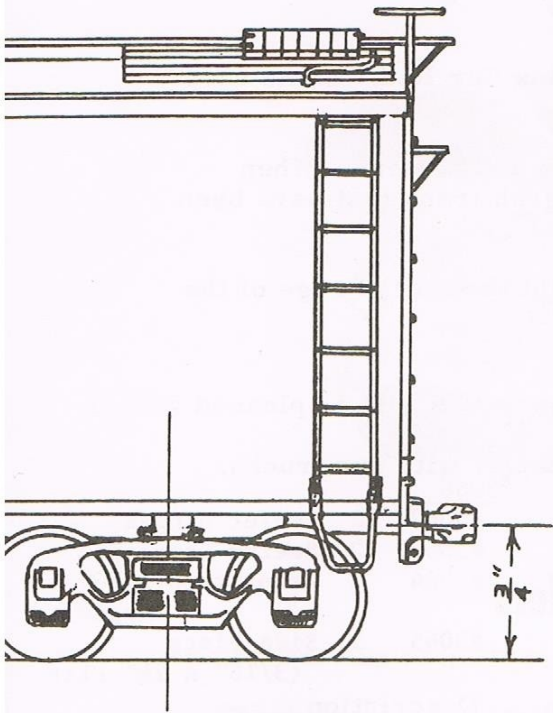


36 Foot Car

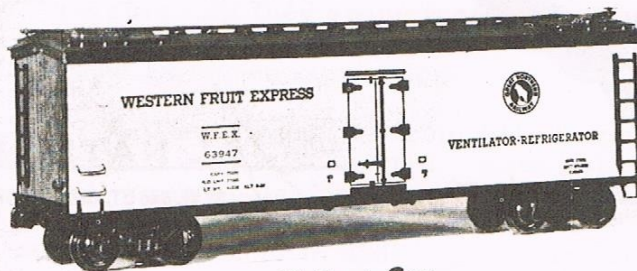
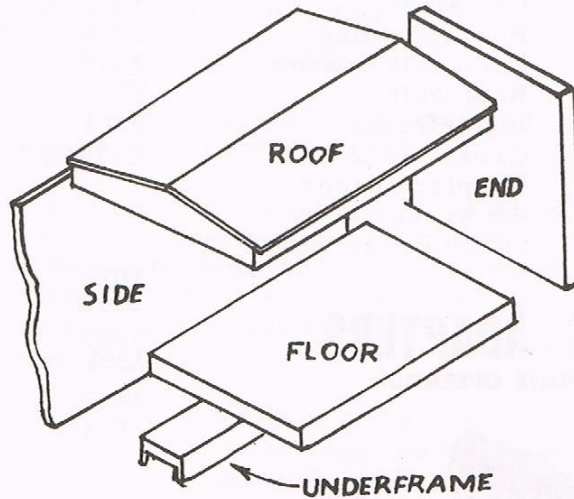
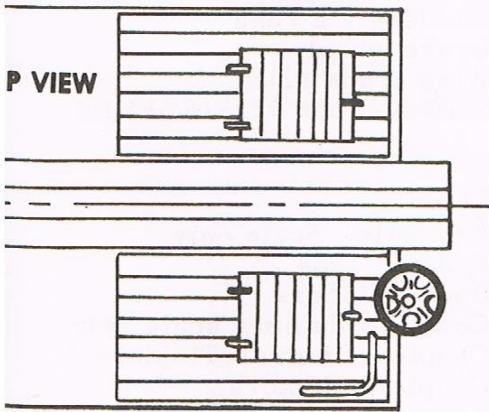
FROM

A **ALL NATION L**
23 W. 546 ST. CHARLES RD., V

ALL-NATION'S 36 and 40 Foot Wood Reefers



Tinplate or Scale in
"0" GAUGE



40 Foot Car

8. ICE HATCHES. Drill two #60 holes in ice hatch platforms as shown by (x) in drawing and mount with #20 brads. Roof hand holds are then mounted by drilling #69 holes as shown on drawing.
9. End ladders, brake platform, brake wheel and rod, and grab irons should then be mounted as shown.
10. Now paint the body of the car with Box Car Red. Some cars have the underframe Dull Black.
11. Car sides are now mounted at this time, using pins and cement. When sides are on mount ladders, steps, moulding and grab irons that have been previously painted.
12. Touch up the pin heads with matching paint and paint the milled edge of the car side dull black.

Your ALL-NATION Wood Reefer is now complete and we know you will be pleased with it.

* For tin plate see photo showing the use of coupler and adapter with our trucks.

PARTS LIST

36 and 40 Foot Wood Reefers

<u>Part No.</u>	<u>Quan.</u>	<u>Description</u>	<u>Part No.</u>	<u>Quan.</u>	<u>Description</u>
350L _A	1	Floor	680	75	Escutcheon pins
3510	2	Roof boards	3009	6	Grab irons
3520	2	Roof ends	3013	2	Roof hand holds
	2	Car sides	3022	4	Car steps
3512	3	Roof moulding	3012-A	1	Brake platform
3513	1	Roof walk spacer	3014	2	Roof walk supports
3181	1	Roof walk	3014	2	Ladders - 6 rung
3540	1	Underframe	3030	4	Brake wheel
3541	1	Cross brace	3001	1	Wire brads #20x5/8"
3542	2	Coupler spacer	3151	20	Screws-wood #2x3/8" F1.Hd.
1698-B	1	AB brake set	C-1401	4	
1903	1	.032" Brass wire			
					#2474
			3026	2	End Sills.. Scale only
			3050	2	End Sill Pins " "
			3027	2	Body Bolsters
			1591	2	Couplers,dummy, scale only
			3820	2	Couplers, dummy, Tinplate "
			3821	2	Coupler Adaptors, " "
					#2476
			3115-R	2	Ice Hatch and Platform, R.H.
			3115-L	2	Ice Hatch and Platform, L.H.

COUPLERS - ADAPTERS

for TINPLATE OPERATION

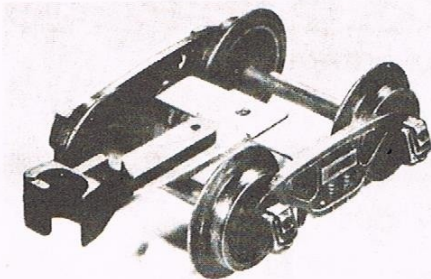


Illustration showing tinplate dummy coupler and bolster adapter mounted in position on scale truck fitted with tinplate wheels allowing operation with Lionel automatic couplers.

FROM

ALL NATION LINE
 23 W. 548 ST. CHARLES RD., WHEATON, ILL. 60187