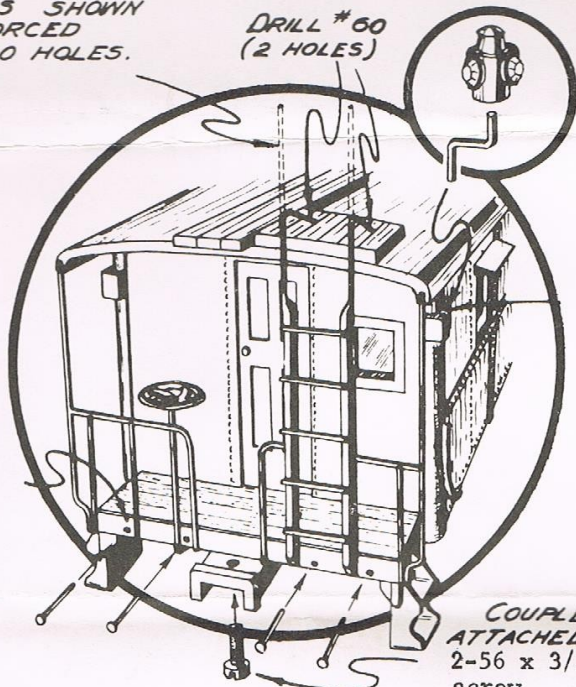


**MARKER LIGHT**

AS SHOWN. FIT INTO #67 HOLE. AND GLUE

LADDER RAILS BENT AS SHOWN AND FORCED INTO #60 HOLES.

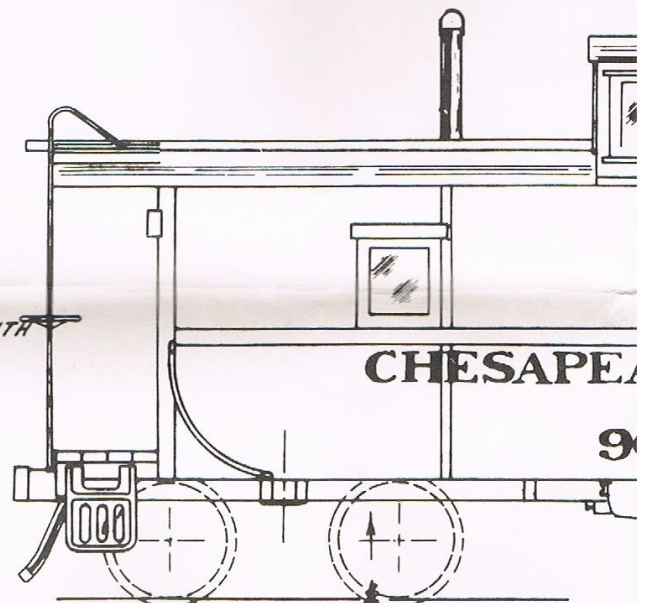
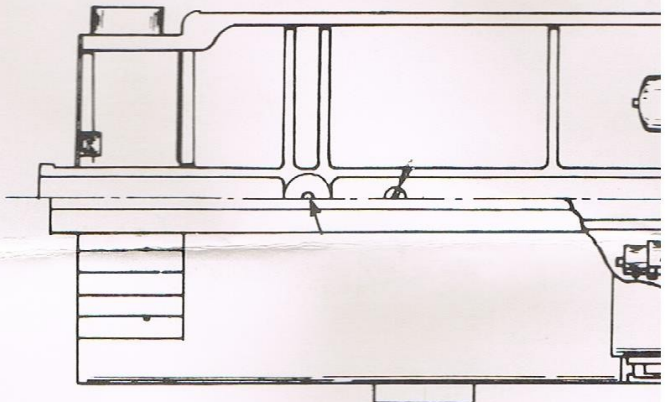
DRILL #60 (2 HOLES)



**NOTE:**

FASTEN BOTTOM OF PLATFORM RAIL ASSEMBLY WITH FOUR COMMON PINS. CUT PINS 1/4" LONG INSERT IN #67 HOLES. BEND, AND PRESS WITH PLIERS. OR WITH CRAZY GLUE OR SOME OTHER SUPER GLUE.

COUPLER ATTACHED WITH 2-56 x 3/16" screw.

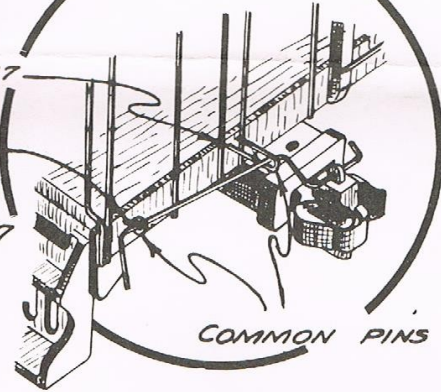


UNDERFRAME WITH TWO 3/16"

**WOOD INNER STRUCTURE DETAIL**

DRILL #67

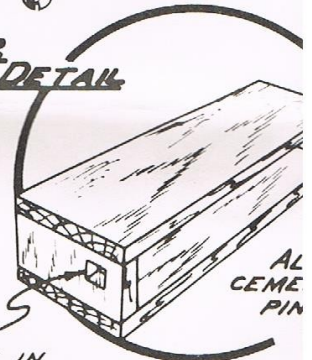
DRILL #67



COMMON PINS

**AUTOMATIC COUPLER DETAIL**

AUTOMATIC COUPLERS, ALTHOUGH NOT FURNISHED IN KIT, MAY BE ADDED AS SHOWN



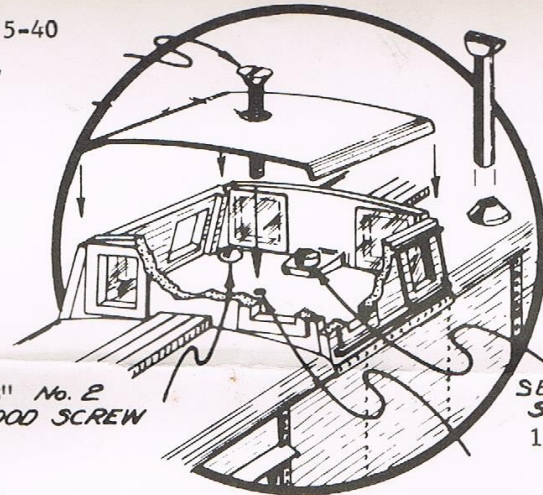
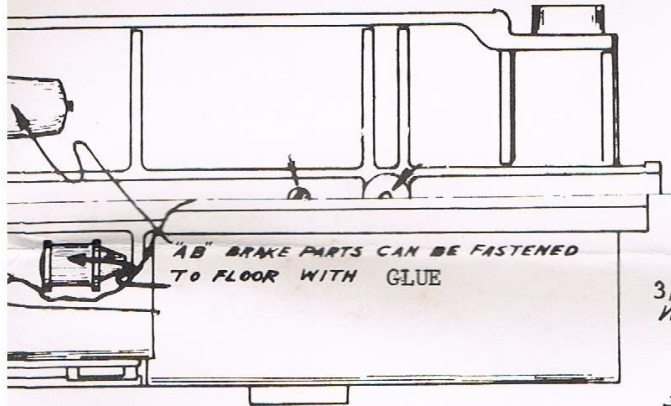
AL CEMENT PIN

HOLE CUT IN EACH END FOR WINDOWS.

NOTE: UNDERFRAME  
VIEW FROM BOTTOM -  
LOOKING UP.

3/4" x 5-40

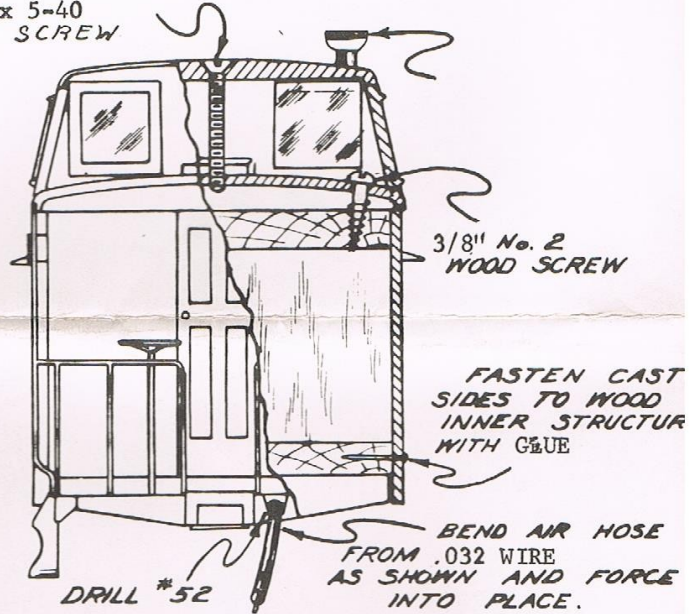
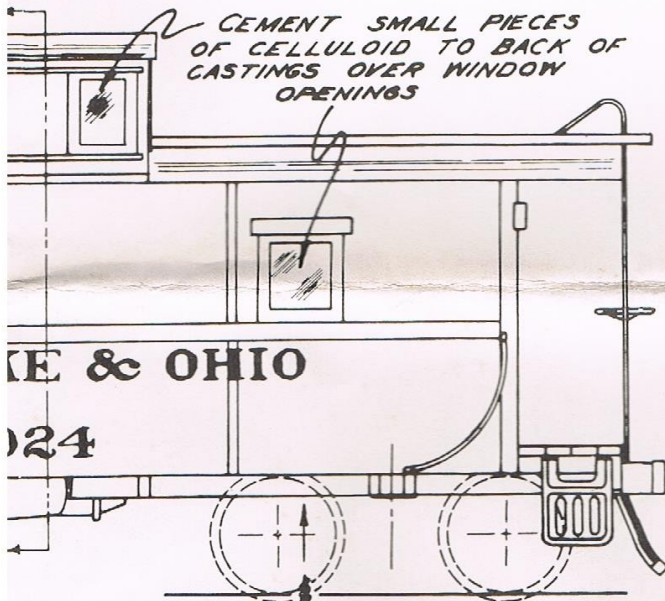
SCREW



3/8" No. 2  
WOOD SCREW

SELF TAPPING  
SCREW #4 x  
1/4"

3/4" x 5-40  
SCREW



3/8" No. 2  
WOOD SCREW

FASTEN CAST  
SIDES TO WOOD  
INNER STRUCTURE  
WITH GLUE

BEND AIR HOSE  
FROM .032 WIRE  
AS SHOWN AND FORCE  
INTO PLACE.

DRILL #52

SECTION H-H

ATTACHED  
No. 2 WOOD SCREWS

CONSTRUCTION NOTES:

The inner structure of this car is assembled from wood as shown in the details, cement and bank pins are used in all joints. While this is drying, the casting may be cleaned. This is done with a file. Avoid filing excessively and keep the corners sharp and square, and the edges straight. Fasten the underframe on first with two wood screws as shown. The end castings should be held in place to help locate the underframe because they fit between the wood inner structure and the end platforms. Attach the side and end castings next. Use a thin layer of cement to secure them. Immediately wipe away any excess cement that may be squeezed out. The roof and capola ends are put on last. The ends are held each with a 3/4" self tapping screw and the roof with a 3/4" screw. The platform rail assemblies are attached as shown in the detail. First bend the ladder rails and force them into the holes in the roof,

then insert and solder or glue as explained. Fasten the trucks with screws and the couplers with screws. The mounting of the smoke jack, marker lights, air hoses and air brake equipment is clearly defined in the drawing. The model is painted red with black roofs, platform, steps, and underframe.

POINTS  
ED AND  
D

THE ALL-NATION LINE

**C & O CABOOSE**

1/4" = 1'-0"

DRAWN BY  
Fred C. Tuxworth