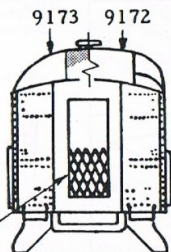
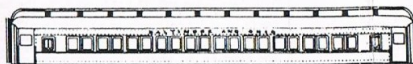




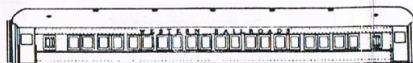
Arch Roof
 Round roofs
 as shown
 Monitor roof
 tailgate (optional)



9173 9172
**Simulated Canvas
 Roof Covering.**
 Shape and sand roof.
 Seal, sand, and paint
 black. When dry,
 apply strips of
 tape or paper,
 3/4" wide, 3/4"
 apart (see shading).
 Lastly, install the
 vents and details.



9172: Optional roof details for Baltimore and Ohio
 (24 C952 Box Vents)



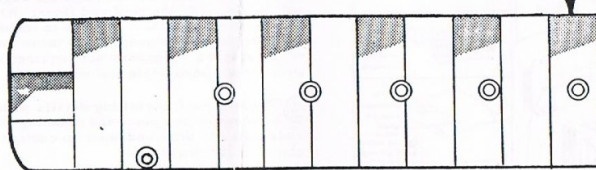
9173: Optional roof details for Western Railroads
 (10 C854 Utility vents, 4 C857 Globe vents)

9172 9173

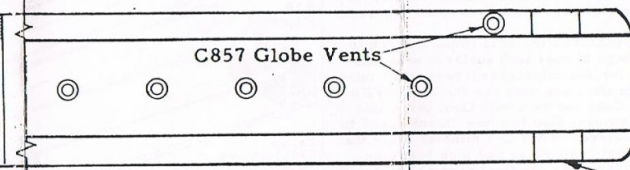
O Gauge
 75' Coach
 (Paired Window Style)

WM. K. WALTHERS INC.
 MILWAUKEE WISCONSIN

Scale: 1/8" = one foot
 59-0330



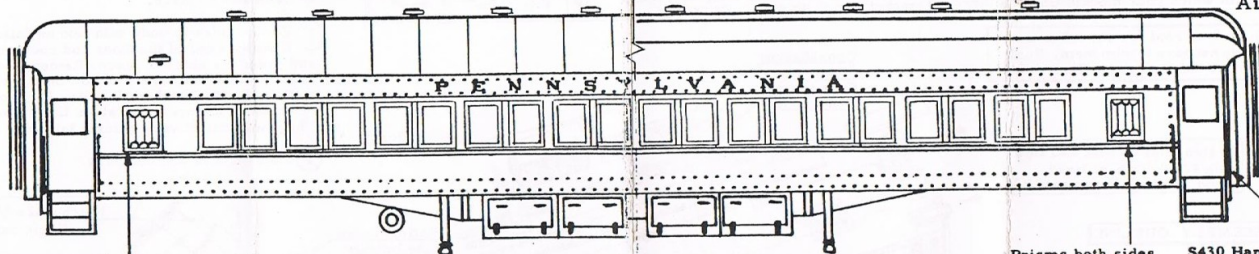
9173 ARCH ROOF



C857 Globe Vents

9172 MONITOR ROOF

Cut from
 M120
 Air Duct

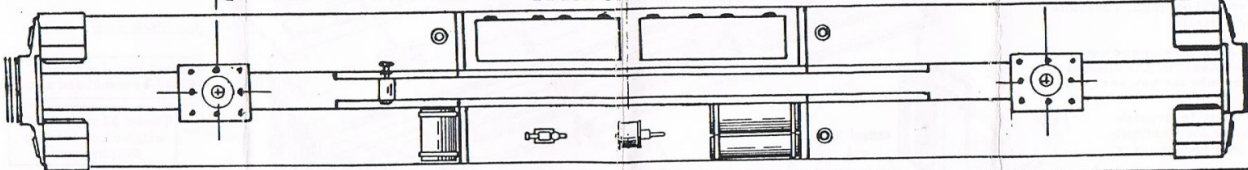


Prisms both sides

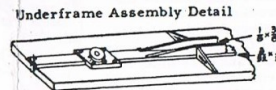
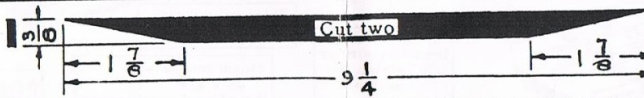
Truck centers - 13"

Prisms both sides

S430 Hand rails
 (optional)



IMPORTANT -- TRUCKS & COUPLERS
 Truck centers shown are average. Verify
 position with the trucks you intend to use
 before cutting centersill. (Allow for steps).
 Mount couplers on a pad of 3/32" centersill
 stock. Proper coupler height (center) is
 11/16" above the rail or 1/4" below floor.



HEY, HERE'S SOMETHING NEW!

One of the really new features of this kit is the method of cementing the sides to the body. BUT, you need a cement that will hold wood to metal: one that will NOT come loose in a damp basement, a cement that will NOT crack even if the model is stored in an attic where the temperature may change rapidly from sub-zero to plus 120°. **GOO WILL DO THIS JOB.**



We have tested Goo continuously since 1949 and we KNOW it will do this job (and most any other cementing job). Don't take a chance with an ordinary cement. Your models deserve Goo. Try it. Give Goo a chance to show you some new tricks.

FOLLOW DIRECTIONS. It is important and to your advantage to coat both surfaces with Goo and let dry for 2-3 minutes as it says on the tube. Or, if you prefer, you may use the **TRANSFER METHOD.** Coat one part with Goo, press into place and remove. Goo has now "transferred" to the other surface. **WAIT 2-3 minutes** while the excess solvent evaporates and tack builds up, then press into place for final assembly. You'll be amazed at the difference this simple procedure makes in the speed with which your joints set and the ease with which your models Goo together.

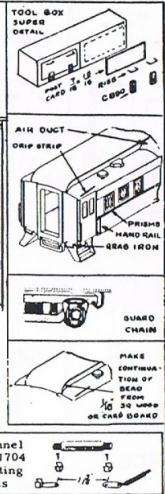
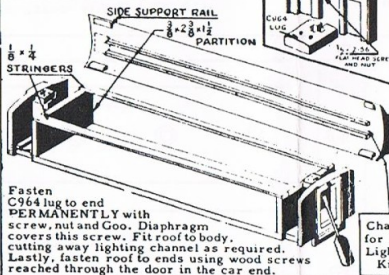
Sides, floor, and roof are all cut to exact size. You do not have to trim them. Roof is 1/2" longer than sides and floor.

SUPER DETAILS

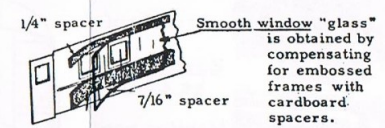
In order to keep the price of the basic kit as low as possible, we have packed the super detailing parts (usually referred to as "optional" on the plans) in a separate kit. These kits, which include hand rails, grab irons, prism windows, guard chain for the trucks, hinges and handles for underbody boxes are available for all styles of cars. You may also purchase accessories such as air conditioning strips, marker lights, venetian blind decals, interior detailing, and lighting kits that will make your car a real show-piece. Consult catalog for listings.

REMOVABLE ROOF

A removable roof is desirable if interior detailing or lighting is planned. To provide for it, cut away the regular side support rails and make a new support frame as shown. Sides will be Gooed to this new frame.



E Complete the underbody details with both standard and optional superdetail parts, scaling any needed dimensions from the plan.



F Prepare sides. If the optional hand rails are desired, drill holes and cement or solder in place. Check sides against body for fit and then paint. Do not paint the edges that will be Gooed to the roof and floor. When dry, Goo cardboard window spacers to inside of car side, then Goo transparent window material to the spacers. (Spacers not required on cars with streamlined-style flat windows.)

G Prepare roof, installing details with Goo as shown on the plans and rounding the ends with file and sandpaper to contour shown in the drawings.

H Paint the body, except do not paint the edges of the floor and roof where the sides will be cemented in place.

I Fasten sides to body with Goo as follows: Coat the edge of the floor and roof with Goo and press the sides in place. Remove the sides and allow the Goo, which is now on the sides as well as the floor and roof, to dry for two minutes. Then press the sides firmly in place. The joint will set very quickly this way.

J Mount trucks and couplers.

Fasten ends to roof and floor with #2 x 1/2" Flat Head Wood Screws. (See inset "B")

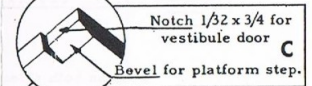
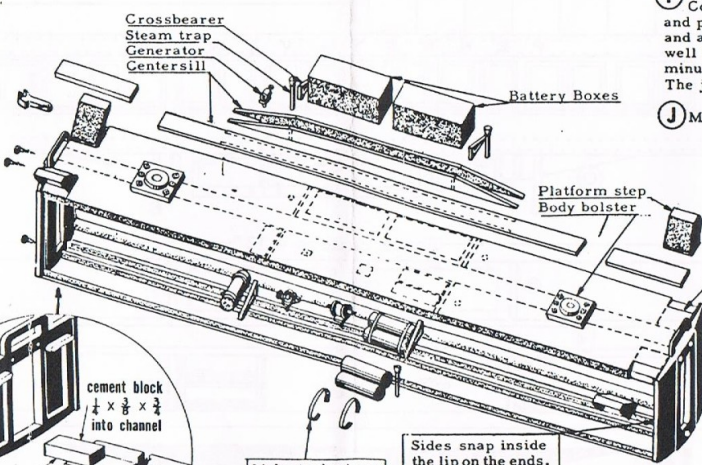
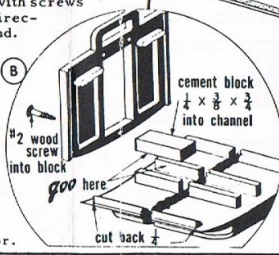
ASSEMBLY OUTLINE

A Clean flash from end castings. Fasten optional super detail parts to ends if desired. (See note on "Super Details".)

B Fasten ends to floor and roof with screws and Goo (inset "B"). Follow directions on Goo tube for quickest bond.

C Notch floor to provide clearance for vestibule door and step (see inset "C").

D Locate truck centers for the trucks you will use and Goo the diecast body bolsters in place. Cut centersill parts from wood and assemble on floor, reinforcing the fishbelly sections with pins. Be sure the centersill is centered on the floor.



Mount couplers with #2 x 3/8 round head wood screws. Three #2 x 1/2 FHWS will be covered by Diaphragm.

Make tank straps from flat wire or 1/16" strips of cardboard or sticky tape.

Sides snap inside the lip on the ends. Mount trucks with #4 x 3/4" Round head wood screws.

IMPORTANT: These General Instructions show the body assembly of any car of this type. Car plans on the reverse will show where to locate all detail parts.