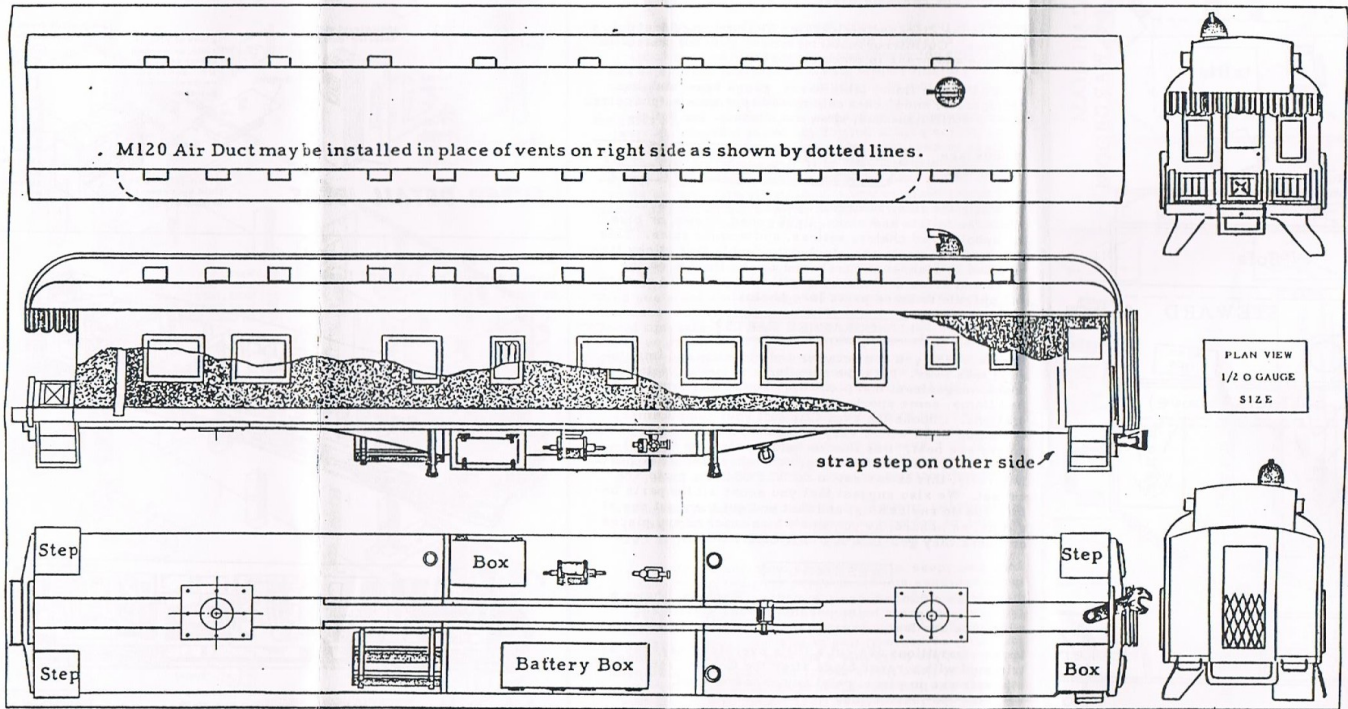
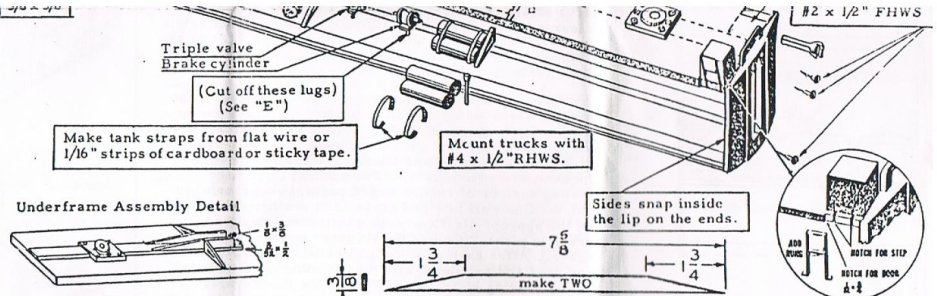


body bolsters in place. Cut centersill parts from stripwood and assemble on floor, reinforcing the fishbelly sections with pins. Be sure the centersill is centered on the floor.

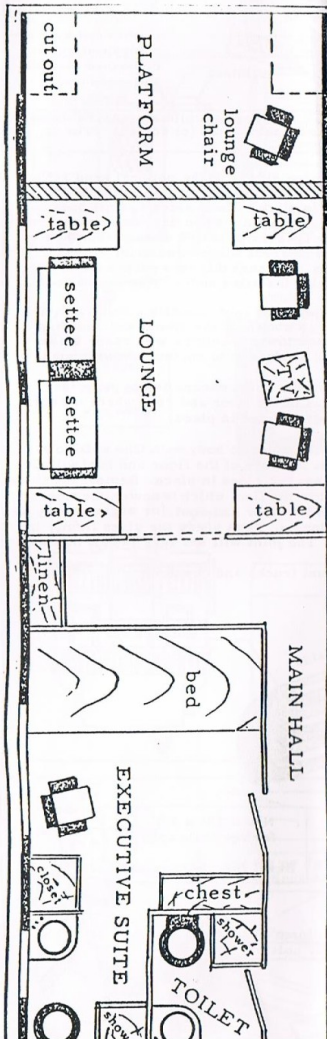
Complete the underbody details with both standard and optional parts, scaling any needed dimensions from the plan. Instead of drilling holes for the brake cylinder, valve, and steam traps, we suggest you cut off the round mounting lug and Goo the flat base or pad directly to the floor.

**IMPORTANT:** These General Instructions are designed to show the method of assembling the body and details on ANY observation car. CHECK LOCATION OF ALL PARTS ON YOUR CAR PLANS.



0100 EXECUTIVE PAD ASSEMBLY

ALL NATION LINE  
23 W 546 ST CHARLES MO



**START HERE**

Every instruction sheet starts out by suggesting that you read the instructions first. Well, it's doubly important with this kit. First of all, it IS different. This is the first time that a model railroader has ever been able to get his teeth into a kit with as many opportunities for detail as you will find in this one. You'll miss something if you don't follow the directions. Secondly, the more you work with these parts, the more ideas you get for detailing your own. The more you study these sketches and plans ahead of time, the quicker your own ideas will germinate once you get going.

This interior is designed for Walthers Executive car, but may be adapted to other cars by making additional walls and partitions of the proper length out of cardboard.

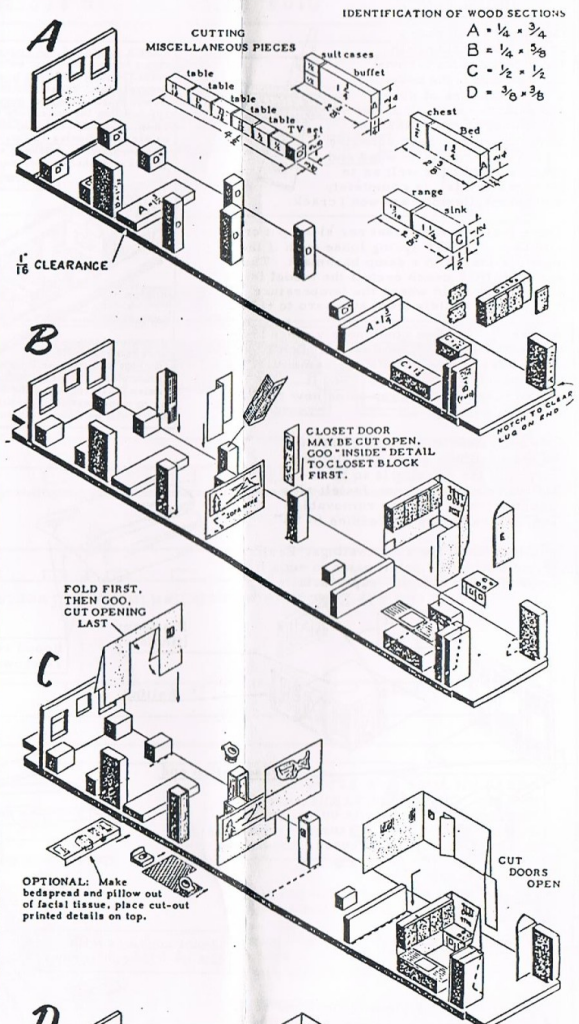
These instructions assume you are going to mount the interior directly on the car floor -- but you may also build it on a sheet of cardboard or metal and slide into place in the car body. In this case, use the full size floor diagram to lay out the parts.

**IMPORTANT:** All parts should be installed 1/16" back from the sides of the floor so the panelled window frames, spacers, and "glass" will not interfere with the interior. The easiest way to visualize the interior would be to install major partitions and fit the smaller parts into place. This is the hardest way to BUILD the interior, however. Our outline shows how to put the smaller parts and partitions in place first and finish with the main walls. Follow the steps carefully and you will be amazed at how easy it is.

**CEMENT.** Please use Walthers Goo on this kit. We know it will do a fine job of holding the cardboard, wood, and metal parts in place, and that it will hold the sides firmly to the roof and floor. Also, please follow the instructions on the tube. It is **IMPORTANT** and to your advantage to coat both surfaces with Goo and let dry for 2-3 minutes before putting the parts together for final installation. (If you prefer, you may use the **TRANSFER** method. Coat one part with Goo, press into place and remove. Goo has now 'transferred' to the other surface. Wait 2-3 minutes while the excess solvent evaporates and tack builds up, then press into place for final assembly.) You'll be amazed at the difference this simple procedure makes in the speed with which your joints will set.

**IS THERE A WOMAN IN THE HOUSE?**

A wife, sister, mother, or girl friend can give you a lot of help with this kit. Borrow a pair of tweezers to help put the small parts in place, then inquire about the availability of an old nylon stocking that could be used for curtains, towels, or a bed spread. No stocking? Well, use facial tissue, which is also good for a table cloth and napkins. If you rate high enough with the gals, maybe you can get a peek into their sewing kit. This will usually yield glass beads, pins, and sequins that can be used to make lamps, flower vases, and ash trays. Similarly, a length of plastic or glass rod (iodine bottle, solvaset bottle, etc) makes a drinking glass or a fluorescent bulb. There is no end to the details that can be added to this car. You'll have a lot of fun doing it, and a lot of satisfaction knowing that your model is the only one of its kind in the world. See sketch E - "Super Detail Ideas".





**IMPORTANT**

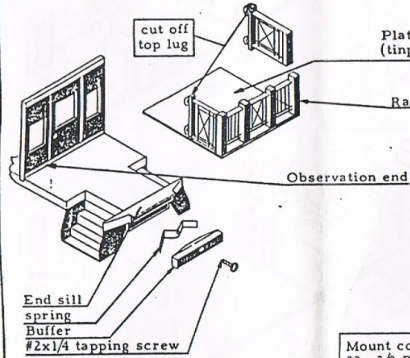
Old timers will note a revolutionary change in the directions for fastening the sides to the body. Gone is the idea of pins and solder -- in its place, we recommend Goo, a flexible, synthetic rubber base adhesive that grips strongly to wood and metal surfaces (as well as to other materials); is completely waterproof, flexible, and won't crack.

These features mean that car sides put on with Goo will NOT spring loose even if the model is stored in a damp basement. The joint will NOT crack even if the model is stored in an attic where the temperature may change rapidly from sub-zero to +120°.

We have tested Goo continuously since 1949 and know that it will do this job. Don't take a chance with an inferior cement. Your models deserve Goo. Try it. Give Goo a chance to show you some new tricks in model building.

**A** Notch floor to provide clearance for vestibule doors and platform steps. If the interior is to be detailed, now is the time. Install all interior parts, plus the removable roof angles before proceeding to "B".

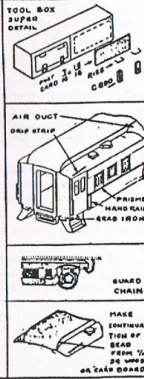
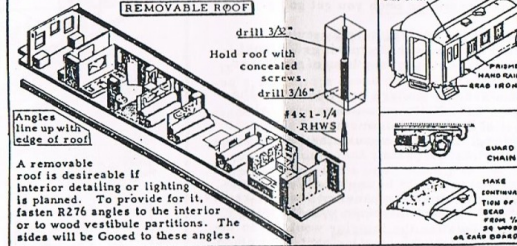
**B** Clean flash from all castings. Fasten optional super detail parts to ends if desired. (See note on "super details.")



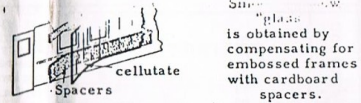
**C** Fasten vestibule end to floor and roof. Mount end sill to floor, and railing to

**SUPER DETAILS**

**SUPER DETAILS.** In order to keep the price of the basic kit as low as possible, we have packed the super detailing parts (usually referred to as "optional" on the plans) in a separate kit. These kits, which include hand rails, grab irons, prism windows, guard chain for the trucks, hinges and handles for underbody boxes are available for all styles of cars. You may also purchase accessories such as air conditioning strips, marker lights, venetian blind decals, interior detailing and lighting kits that will make your car a real show-piece. Consult catalog for listings.



A removable roof is desirable if interior detailing or lighting is planned. To provide for it, fasten R276 angles to the interior or to wood vestibule partitions. The sides will be Gooed to these angles.



**NOTE:** Spacers and cellulate must be above floor and below roof (or angles). Trim if necessary.

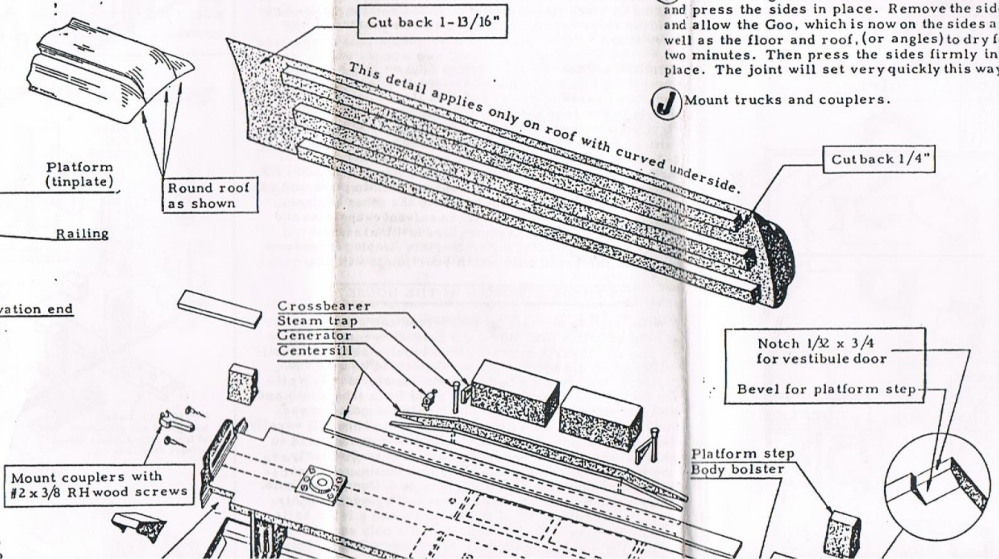
**F** Prepare sides. If the optional hand rails are desired, drill holes and cement or solder in place. Check sides against body for fit and then paint. When dry, Goo cardboard window spacers to inside of car side, then Goo transparent window material to the spacers. (Be sure this does not interfere with the angles installed under "Removable roof".)

**G** Prepare the roof, installing details with Goo as shown on the plans, and rounding upper and lower monitors with razor blade, file and sandpaper to contour shown in plan.

**H** Paint the body, except do not paint the edges of the floor and roof where the sides will be cemented in place.

**I** Fasten sides to body with Goo as follows: Coat the edge of the floor and roof with Goo and press the sides in place. Remove the sides and allow the Goo, which is now on the sides as well as the floor and roof, (or angles) to dry for two minutes. Then press the sides firmly in place. The joint will set very quickly this way.

**J** Mount trucks and couplers.

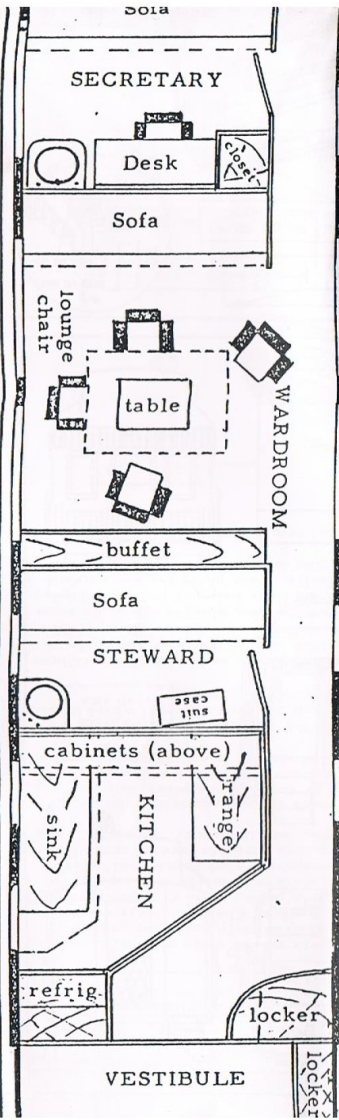


Mount couplers with #2 x 3/8 RH wood screws

Notch 1/2 x 3/4 for vestibule door  
Bevel for platform step

Platform step  
Body bolster





1. Prepare the floor. Cut notches for step and vestibule clearance, and read the car instructions on mounting air brake cylinder, triple valve and steam traps. (If you are going to drill holes for these, it should be done BEFORE the interior is made up.)

2. Sort out the wood parts and match them up with the printed areas on the floor. You will have to cut pieces for the sink, range, and tables. Then put them in place, starting with the bed, then the tables, next the range and sink, then the buffet, and finally the closets, showers, lockers, and refrigerator. Put a dab of Goo on the mating surface of each group of parts, being careful to rub the Goo well into end grain. Put another dab of Goo on the appropriate floor areas, wait 2 minutes, and then press in place. (Or use the transfer method described above.) After each group of pieces is in place, turn the car over and reinforce with pins, cutting off the heads before driving home. By fastening the lowest parts first, you will always have a firm surface to pin to when you turn the car body over.

3. Goo the diecast refrigerator and kitchen cabinet doors in place. Cut mirror material to size, peel off protective backing and press in place on partitions.

4. PAINT the floor, table bases, range base, sink base, refrigerator and kitchen cabinets an appropriate light color. DON'T PAINT the bed, showers, closets, and buffet.



5. While the floor is drying, paint the diecast parts. White for toilets and sinks, light green, brown, or blue for upholstered chairs, settees, and wooden sofas. This is easy if the parts are stuck onto double face sticky tape or glued to a sheet of cardboard first. Doilies on the backs and arms of the chairs will add quite a bit of snap and sparkle to these parts (see photos).

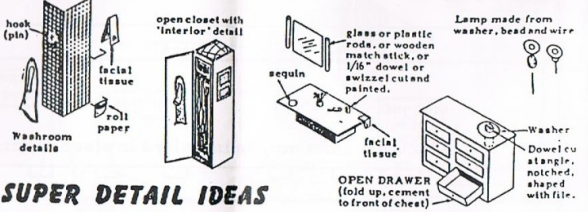
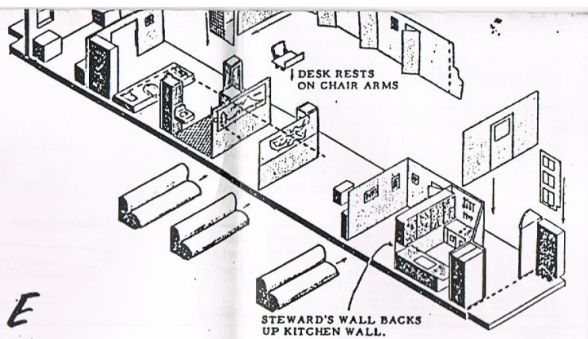
**LITHOGRAPHED PARTS**

Here's where you can let your individuality and imagination take over. We have supplied a variety of details -- books, magazines, and pictures. You'll find some dignified items, some sports figures, and some feminine decorations. Choose the ones that suit your temperament and color them with a very thin water color. Light pastel colors are best. Use this technique, also, on the suitcases, chest, buffet, blankets, bathrobes, and other parts. Naturally, this is easiest to do BEFORE the parts are cut out. We also suggest that you score all the parts before you do any cutting, and that you cut them out one at a time, as needed, so you won't lose track of any pieces or where they go. USE A STRAIGHT EDGE.

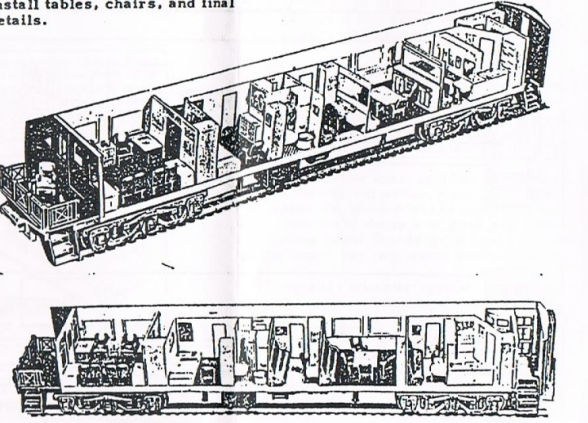
**ASSEMBLY**

Follow the exploded views in order. Each one shows a new group of parts being put into place. Chairs and table tops are last. Arrange them to suit yourself. If some partitions are cut a little oversize, they may be trimmed with a razor blade after the Goo has set. When all parts are in place, paint any exposed wood.

CONSULT PHOTOGRAPHS AND FULL SIZE FLOOR PLAN FOR ANY DETAILS THAT ARE NOT CLEAR IN THE



Steward's partition backs up kitchen wall. Install tables, chairs, and final details.



**EXECUTIVE CAR INTERIOR U706**  
ALL NATION LINE O GAUGI