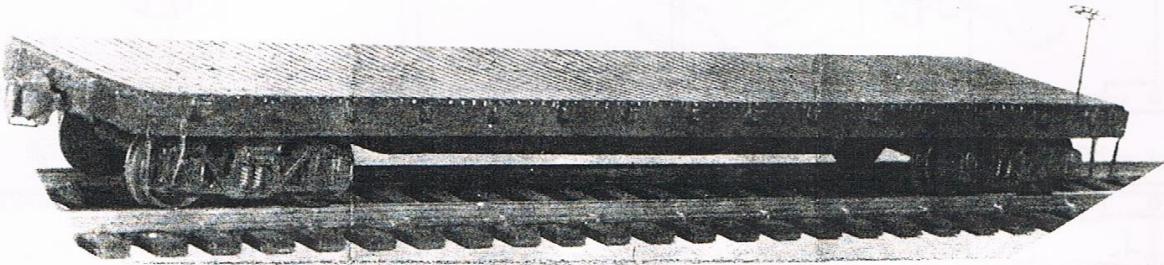


# ASSEMBLY INSTRUCTIONS

## ALL-NATION FISHBELLY FLAT CAR

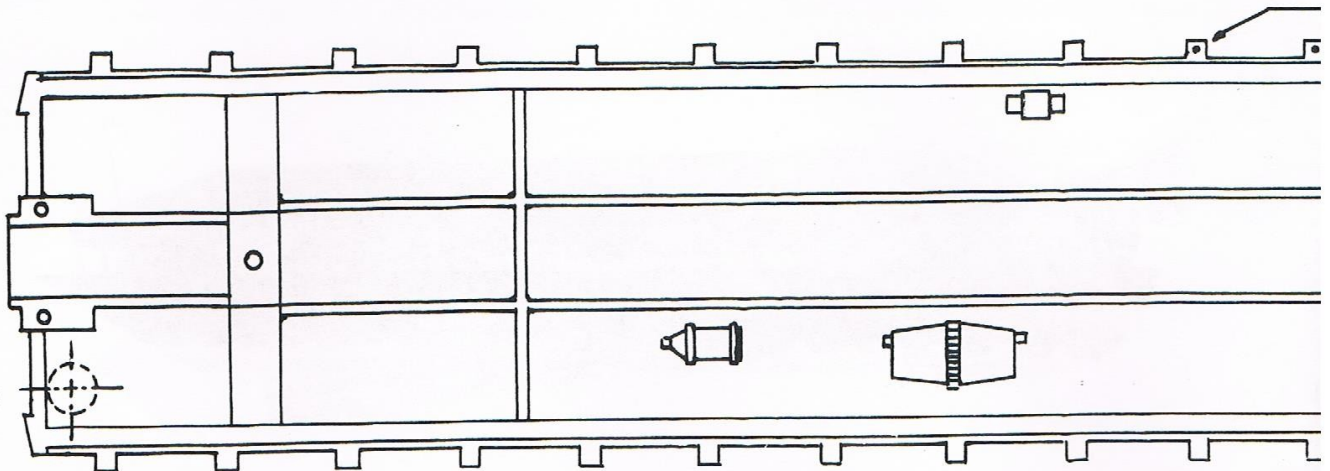


Before starting to build this car read these instructions and study the assembly drawings. Although this car is quite simple to build there are certain precautions that should be followed.

- 1 - Carefully clean all flash from the main casting with a file and sharpen up any of the detail that may need touching up. THIS IS THE MOST IMPORTANT PART OF THE PROCEDURE.
- 2 - Drill one hole in the end of the car deck as shown using a #65 drill for mounting the brake wheel. The brake wheel and rod will be installed later.
- 3 - The couplers should next be mounted. This is accomplished by first assembling the coupler and coupler mounting plate as shown in the drawing. The #0 x 3/16" drive screw should be inserted into the middle hole of the coupler mounting plate #2126 and then driven into the middle hole in the coupler. BE SURE coupler is positioned correctly before making this assembly. The assembly may then be fastened to the underside of the car by using the #00 x 3/16" drive screws, driving them into the holes provided.
- 4 - Bend car steps as shown and spot two holes at each of the four corners for mounting the car steps. These holes should be drilled with a #70 drill. The steps may be mounted in place by using the #22 escutcheon pins as rivets and driving them into the holes which have been drilled. A nail set will be found very useful in performing this operation.
- 5 - The trucks may now be assembled for mounting on the car. When fastening the trucks to the chassis it is desirable to use a little light oil on the threads of the truck pivot screws before inserting them into the threaded holes provided.
- 6 - The brake rod is made using the .032 brass wire. The brake wheel is pressed on the brake rod and soldered. It may now be installed in the mounting hole which had previously been drilled.
- 7 - Mount A-B brake set as shown on drawing.
- 8 - The car is now ready for painting. Before doing so be sure that the metal is perfectly clean. Wiping the parts off good with lacquer thinner will assure a clean surface on which to apply your paint. This car may be all black or tuscan red depending on the prototype being followed. White decals may be applied after painting as desired.

Your All-Nation Fishbelly Flat car is now complete and we know you are well pleased with the results.

# Assembly Instructions



Drill #65 Hole  
For Brake Rods

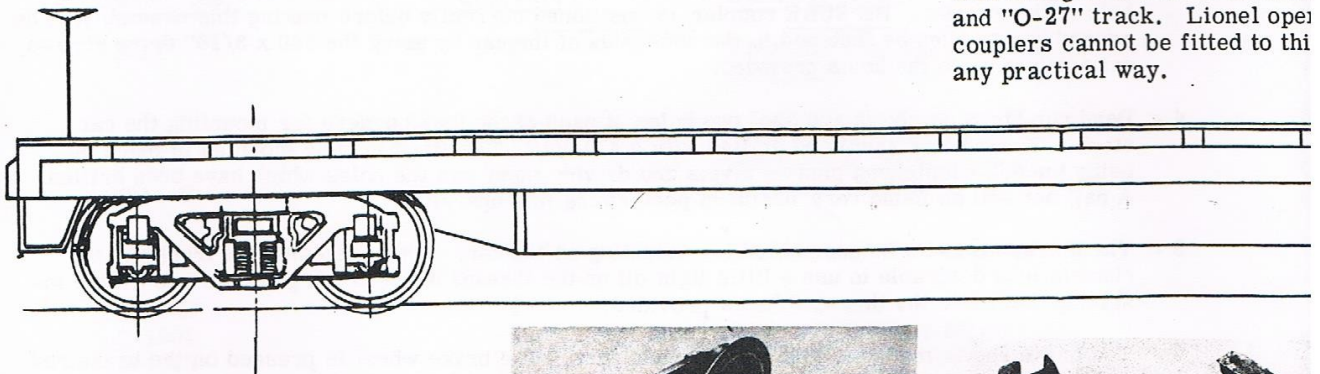
## FOR TINPLATE OPERA

# FISHBELLY FLAT CAR

## IN O GAUGE - BY ALL-NATION

SCALE or TINPLATE

The All-Nation Fishbelly Flat is used with Lionel equipment by addition of two All-Nation Tinplate coupler and coupler adapter components. Add two washers under the bolting screw and remove the port underframe casting shown in diagram. Moving the metal shown will permit free swing of the truck on both "O-27" and "O-27" track. Lionel open couplers cannot be fitted to this car in any practical way.



## COUPLERS - ADAPTERS

for TINPLATE OPERATION

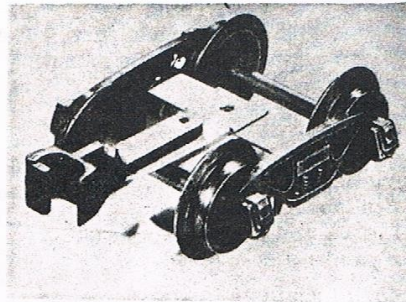
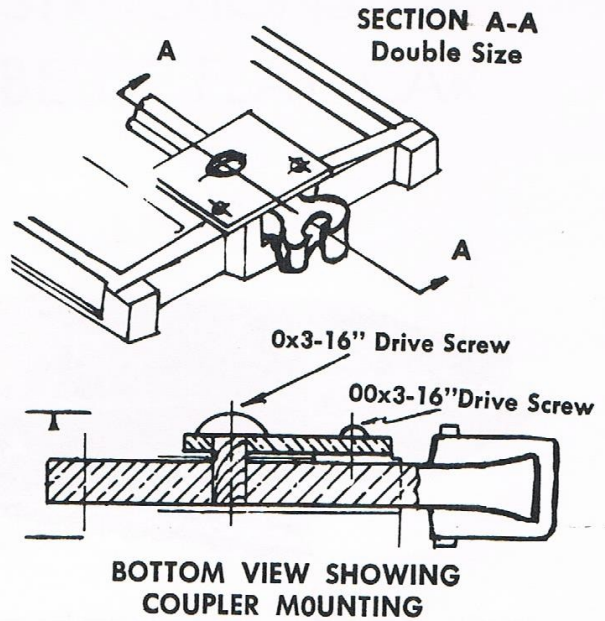
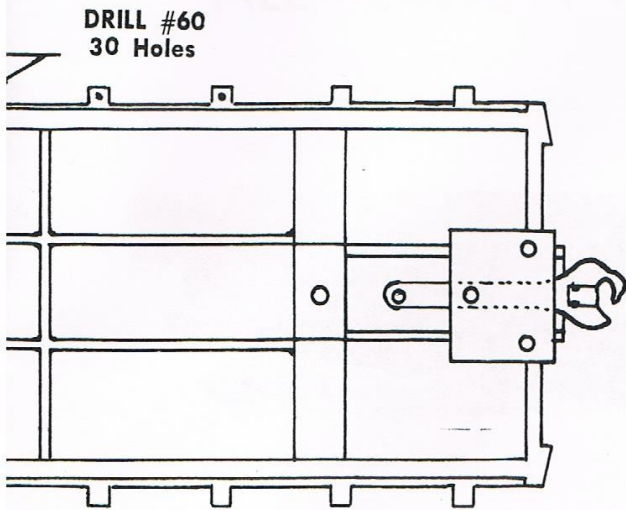


Illustration showing tinplate dummy coupler and bolster adapter mounted in position on scale truck fitted with tinplate wheels allowing operation with Lionel automatic couplers.



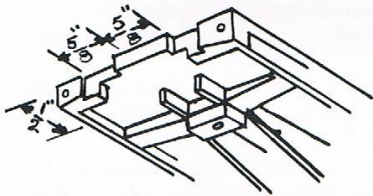
Illustration showing top and bottom of tinplate coupler with bolster adapter before mounting.

**A-N** tinplate coupler and adapter assembly designed to convert scale equipment to use tinplate cars. It allows for differences in flange from-rail and has a special jaw opening to facilitate operation with tinplate automatic couplers. With this new coupler you are assured of perfect alignment to allow perfect coupling with Lionel equipment on straights or curves.

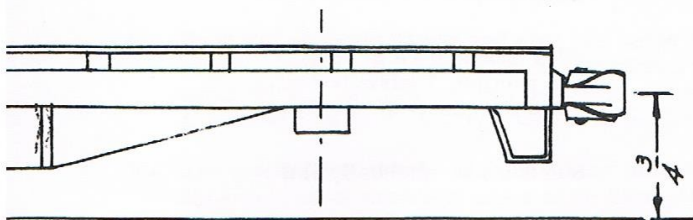
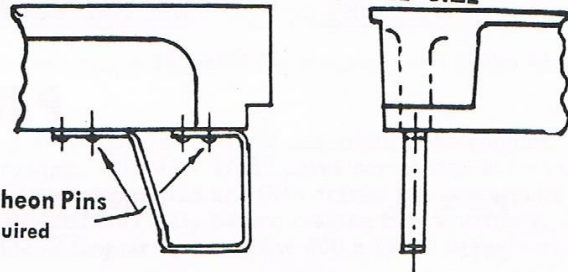


ON

r can be  
e addi-  
ucks and  
binations.  
er mount-  
1 of the  
wing. Re-  
mit the  
0'' Gauge  
ing  
ear in



STEP DETAIL DOUBLE SIZE



R. J. BOSAK

The "ALL-NATION LINE" Greatest Variety in O Gauge

**SPRUNG DRAFT GEAR**  
Another Specialty by All-Nation



Easily  
Adaptable  
To All  
Cars  
Pair  
50c

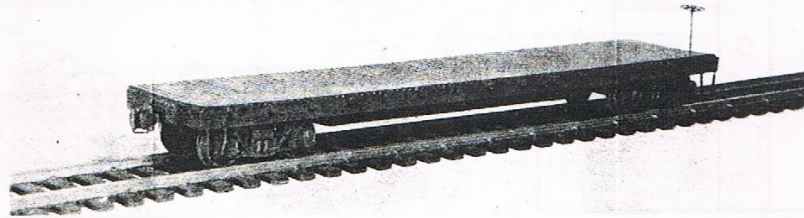
For Realistic Starts and Stops

**ALL-NATION HOBBY SHOP**

Specialists in Model Railroads — Scale & Tinplate

THE ALL-NATION LINE

23W546 St. Charles Road  
Wheaton, IL 60188



## **PARTS LIST**

<u>PART NO.</u>	<u>QUANTITY</u>	<u>DESCRIPTION</u>
3614	1	Fishbelly Flat Car Kit (Less Truck & Couplers)
1903-C	1	.032 Brass Wire 5" long
2420	1	Sub section, Fishbelly flat
3614-C	1	Main Car Casting
2420	1	Sub section, Fishbelly flat
1698-B	1	AB brake set
C-1901	4	#00 x 3/16" Drive Screw
C-1902	2	#0 x 3/16" Drive Screw
C-2018	8	#22 Brass Escutcheon Pins
2126	2	Coupler Mounting Plates
3125	1	Brake Wheel
3022	4	Car Steps

# **ALL-NATION HOBBY SHOP**

**EVERYTHING FOR THE BUILDER AND COLLECTOR**

THE ALL-NATION LINE

23W546 St. Charles Road  
Wheaton, IL 60188