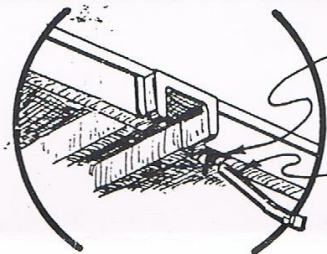


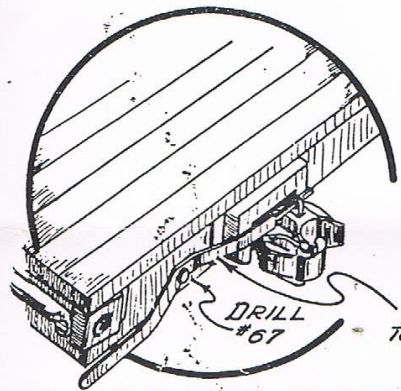
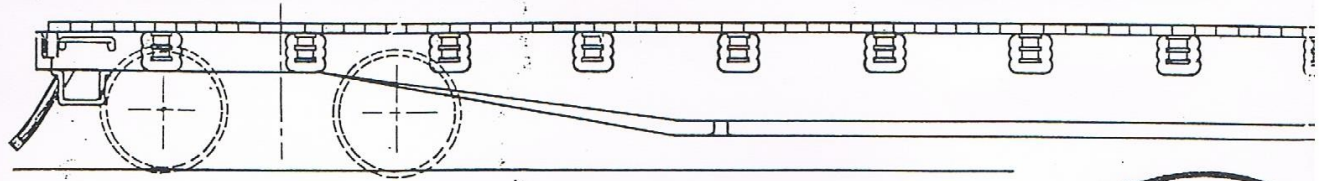
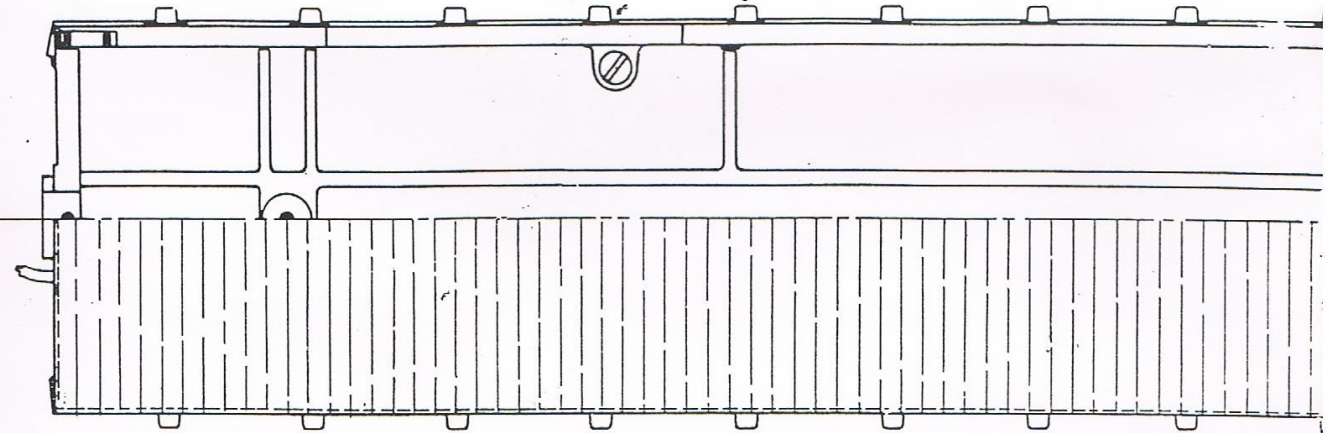
**AIR HOSE DETAIL**  
 DRILL # 52 BEND AIR  
 HOSE FROM 1/8 DIA. REED.  
 FLATTEN END, AND  
 FORCE INTO HOLE.



DRILL # 52

DRILL # 52

PLACE A DROP OF  
 CEMENT ON AIR HOSE  
 IF TIGHTER FIT IS  
 DESIRED.

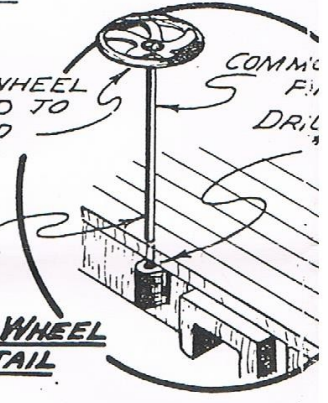


AUTOMATIC COUPLERS,  
 ALTHOUGH NOT FURNISHED  
 IN KIT, MAY BE ATTACHED  
 AS SHOWN. PIVOT IS MADE  
 BY FORCING COMMON  
 PIN INTO # 67 HOLE.

DRILL # 67

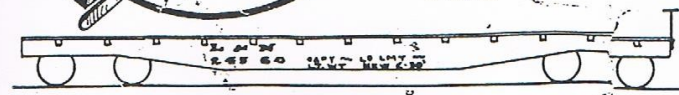
1/8 BRASS RIBBON  
 WIRE

BRAKE WHEEL  
 SOLDERED TO  
 PIN HEAD



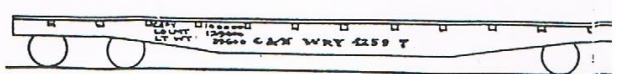
TINNED  
 FOR FORCE  
 FIT.

**BRAKE WHEEL  
 DETAIL**

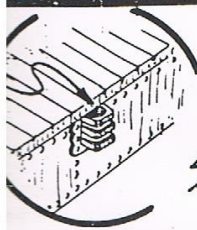


L & N SERIES 24300 to 24799

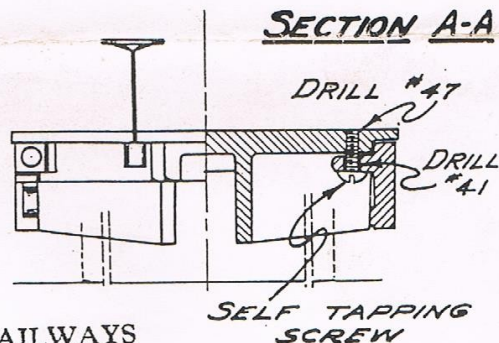
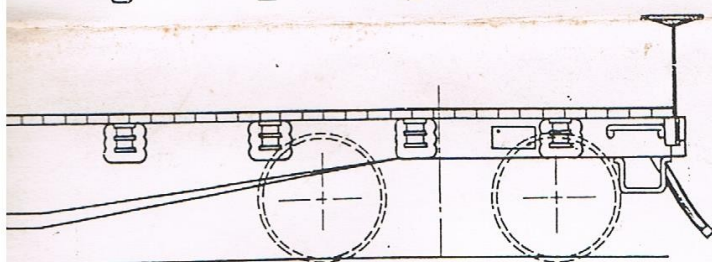
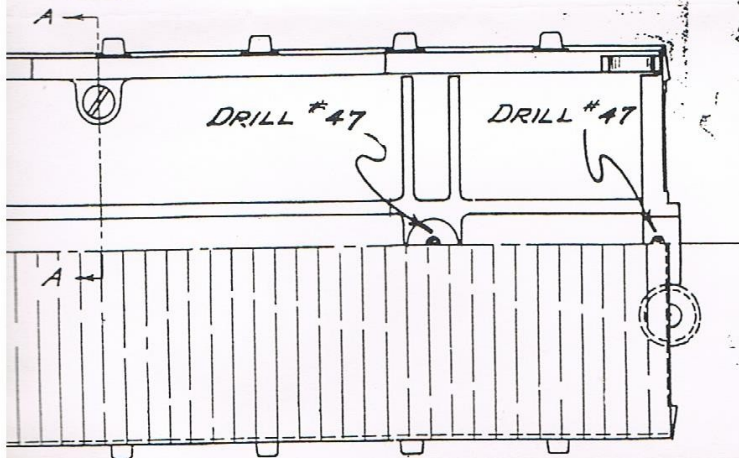
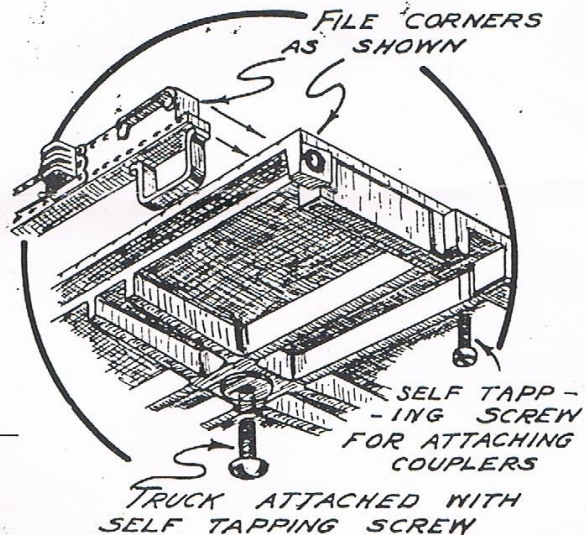
**LETTERING DETAIL**



C & NW SERIES 42501 to 42699



IF STAKES ARE DESIRED, DRILL THE STAKE POCKETS WITH #49 DRILL AND FORCE  $\frac{1}{16}$ " SQUARE BRASS RODS INTO THESE HOLES. ROUND THE ENTERING EDGE SLIGHTLY WITH A FILE TO GUIDE.



SCALE MODEL RAILWAYS

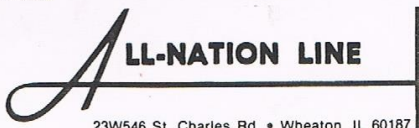
WHEATON, ILLINOIS

CONSTRUCTION NOTES

The castings should first be filed until they fit together as shown in the detail. File lightly and carefully, keeping the corners sharp and square. Drill the floors and frame casting with a No. 47 drill at the spotted positions on the underside. Clamp or otherwise hold the sides in position on the floor and frame castings, and drill the side assembly lugs with a No. 41 drill and attach the sides. Use  $\frac{1}{4}$ " self tapping screws. It is advisable to use a large screw driver for insertion. Drill the center plates with a No. 47 drill and fasten the trucks on with  $\frac{3}{8}$ " self tapping screws. Drill with a No. 47 drill at the spotted positions for the couplers. Attach the couplers with  $\frac{1}{4}$ " self tapping screws. The poling pockets are made by center punching and lightly drilling with a No. 27 drill. The brake wheel is fastened by putting wheel on a common pin and soldering it to the head. Drill the brake wheel "boss" with a No. 67 drill, tin the bottom of the brake wheel axle with solder and force it into the hole. The air hoses are made of  $\frac{1}{16}$ " diameter reed bent to shape and cut at one end as shown in the de-

tail and cemented in place in a No. 52 hole that is drilled in the casting.

Give the car including trucks, two coats of freight car red all over and apply lettering. It has been found by many model builders that a coat of flat varnish not only preserves, but reduces the gloss of the finish and gives the model a much more realistic appearance.



23W546 St. Charles Rd. • Wheaton, IL 60187

50 TON FLAT CAR

46 Foot, Fish Belly