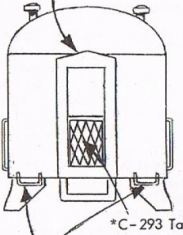
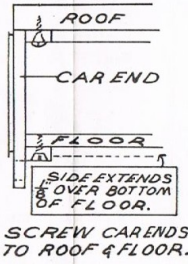


Goo diaphragm bellows to striker plate, then to car end, striker plate out.



*C-293 Tailgate (optional)

*S-120 Grab irons (optional)



SCREW CARENDS TO ROOF & FLOOR.



Seat here optional (not used on Great Northern)

NOTE:
Since this car does not have the older sash-type windows, the cardboard spacers for the acetate window material are not included in the kit.

This car was built in 1937 for the Great Northern's Empire Builder. It was one of the first "streamlined" type cars, and the basic style is common to many railroads.

Great Northern number series: #938-949

9178

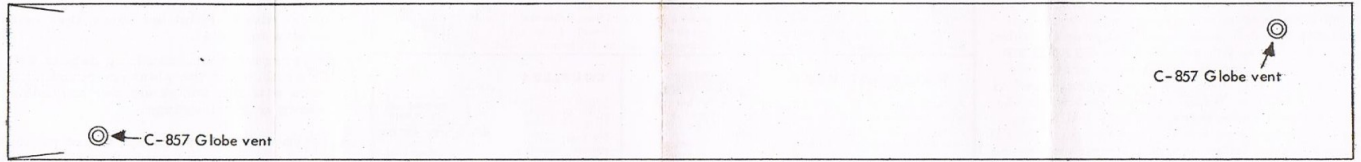
**EMPIRE BUILDER
80' LUXURY COACH**

WALTERS INC
4050 N. 34 ST. MILWAUKEE, WIS. 53216

Scale-1/8" = 1 foot

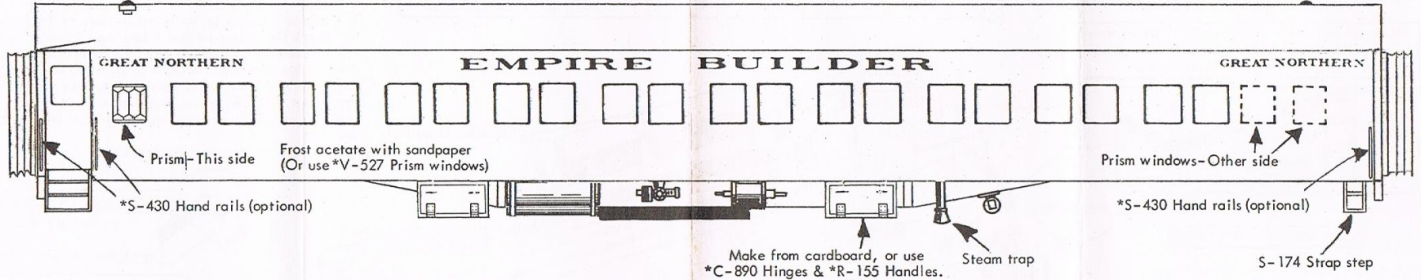
70-0104

*Indicates (a) Super Details parts or (b) Optional Accessories



C-857 Globe vent

C-857 Globe vent



GREAT NORTHERN

EMPIRE BUILDER

GREAT NORTHERN

Prism-This side

Frost acetate with sandpaper (Or use *V-527 Prism windows)

Prism windows-Other side

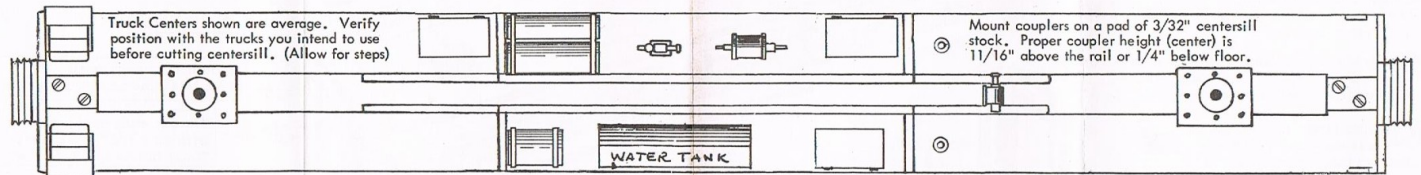
*S-430 Hand rails (optional)

*S-430 Hand rails (optional)

Make from cardboard, or use *C-890 Hinges & *R-155 Handles.

Steam trap

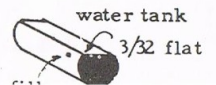
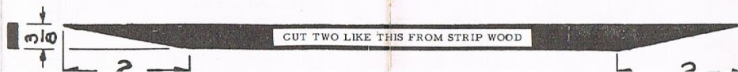
S-174 Strap step



Truck Centers shown are average. Verify position with the trucks you intend to use before cutting centersill. (Allow for steps)

Mount couplers on a pad of 3/32" centersill stock. Proper coupler height (center) is 11/16" above the rail or 1/4" below floor.

WATER TANK



water tank

3/32 flat

HEY, HERE'S SOMETHING NEW:

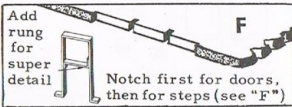
One of the really new features of this kit is the method of cementing the sides to the body. BUT, you need a cement that will hold wood to metal: one that will NOT come loose in a damp basement, a cement that will NOT crack even if the model is stored in an attic where the temperature may change rapidly from sub-zero to plus 120°. **GOO WILL DO THIS JOB.**



We have tested Goo continuously since 1949 and we KNOW it will do this job (and most any other cementing job). Don't take a chance with an ordinary cement. Your models deserve Goo. Try it. Give Goo a chance to show you some new tricks.

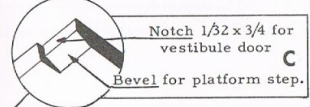
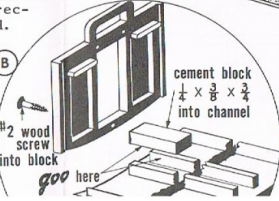
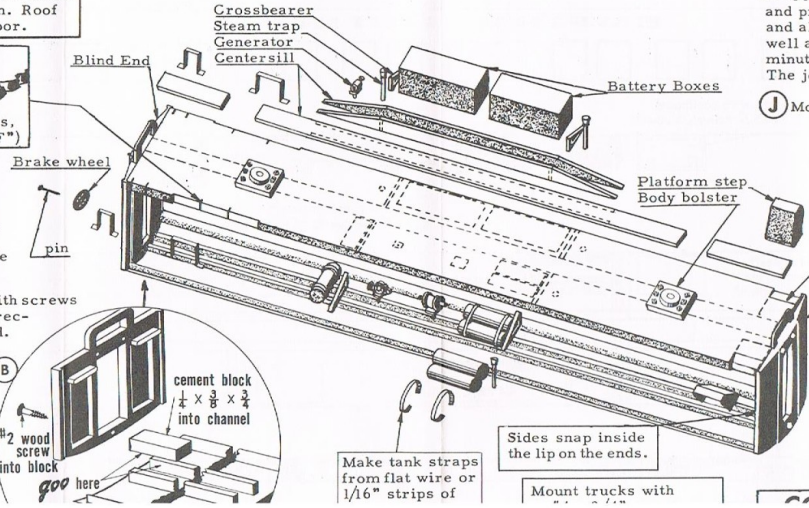
FOLLOW DIRECTIONS. It is important and to your advantage to coat both surfaces with Goo and let dry for 2-3 minutes as it says on the tube. Or, if you prefer, you may use the **TRANSFER METHOD.** Coat one part with Goo, press into place and remove. Goo has now "transferred" to the other surface. WAIT 2-3 minutes while the excess solvent evaporates and tack builds up, then press into place for final assembly. You'll be amazed at the difference this simple procedure makes in the speed with which your joints set and the ease with which your models Goo together.

Sides, floor, and roof are all cut to exact size. You do not have to trim them. Roof is 1/2" longer than sides and floor.



ASSEMBLY OUTLINE

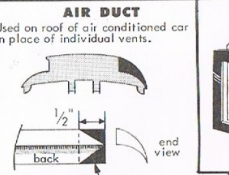
- A** Clean flash from end castings. Fasten optional super detail parts to ends if desired. (See note on "Super Details".)
- B** Fasten ends to floor and roof with screws and Goo (inset "B"). Follow directions on Goo tube for quickest bond.
- C** Notch floor to provide clearance for vestibule door and step (see inset "C").
- D** Locate truck centers for the trucks you will use and Goo the diecast body bolsters in place. Cut centersill parts from wood and assemble on



Mount couplers with #2 x 3/8 round head wood screws. Fasten ends to roof and floor with #2 x 1/2" Flat Head Wood Screws. (See inset "B")

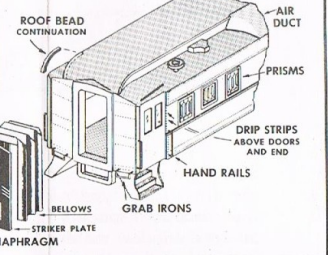
IMPORTANT: These General Instructions show the body assembly of any car of this type. Car plans on the reverse will show where to locate all detail parts.

SUPER DETAILS To keep basic kit cost low, we packed superdetail parts (marked "s" or "optional") in a separate kit. Included are: hand rails, grab irons, prism windows, guard chain, tailgates, box cover details, roof bead castings. Also available are accessories such as interiors, lights, markers, air conditioners to make your car a real show piece. Consult catalog.



AIR DUCT Used on roof of air conditioned car in place of individual vents. Cut off shaded area (both ends) CAREFUL not to break feather edge. Shape front or top surface, sand smooth. Fit to roof (remove roof beading). See end illustration for finished view.

END DETAIL

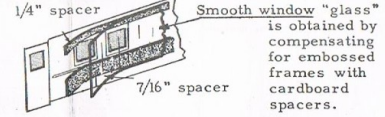


ROOF ROUNDING Shape lower monitor (L). Make curved bead from stripwood (or use #C979 cast bead). Fit to roof. Shape upper monitor (U) to match bead.

REMOVABLE ROOF A removable roof is desirable when interiors or lighting are planned. *U750 removable roof kit makes this easy; provides electrical connection to trucks. *R276 metal angles (cemented or soldered) will reinforce sides.

COUPLERS Mount couplers on 3/32" pad with #2 x 3/8 screw. For short radius curves, increase 1/2" dimension. Proper height (center) is 11/16" above rail or 1/4" below floor.

E Complete the underbody details with both standard and optional superdetail parts, scaling any needed dimensions from the plan. See "F" for mounting strap steps.



F Prepare the sides, mounting all desired details and fastening side doors in place. (Doors can be made to slide using R157 door slides.) Doors must be trimmed to fit in space provided. Check the sides against the body for fit and CUT AWAY roof and floor for clearance as required. Now mount strap steps in floor as shown. (Alt. method: solder steps to car side). Paint the sides, then install window material.

G Prepare roof, installing details with Goo as shown on the plans and rounding the ends with file and sandpaper to contour shown in the drawings.

H Paint the body, except do not paint the edges of the floor and roof where the sides will be cemented in place.

I Fasten sides to body with Goo as follows: Coat the edge of the floor and roof with Goo and press the sides in place. Remove the sides and allow the Goo, which is now on the sides as well as the floor and roof, to dry for two minutes. Then press the sides firmly in place. The joint will set very quickly this way.

J Mount trucks and couplers.

COMBINATION CAR