

**PAINTING & LETTERING**

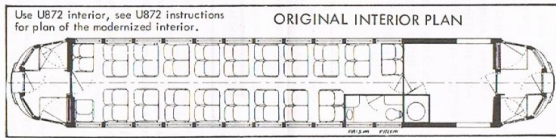
	Original 1928-38	Greenliner 1939-49	Silverliner 1950-
Roof	Brown	Gray	Black
End, Upper	Orange	Red	Red
End, Lower	Orange	Green	Green S*
End Door, Upper	Maroon	Red	Red
End Door, Lower	Maroon	R or G+	Red S*
End Window Sash	Maroon	Gray	Red
Letterboard	Maroon	Green	Red
Window Band	Orange	Gray	Red
Side	Orange	Green	Green S*
Side Door	Maroon	Green	Red
S-1 End Stripe	Maroon	none	R-S*
S-2 Letter'b'd stripe	none	Red	none
S-3 Belt Rail	Maroon	Red	Red
S-4 Side Stripe	none	Red	Red

S\* Silver with shading to represent corrugations  
R or G+ Seen both ways.

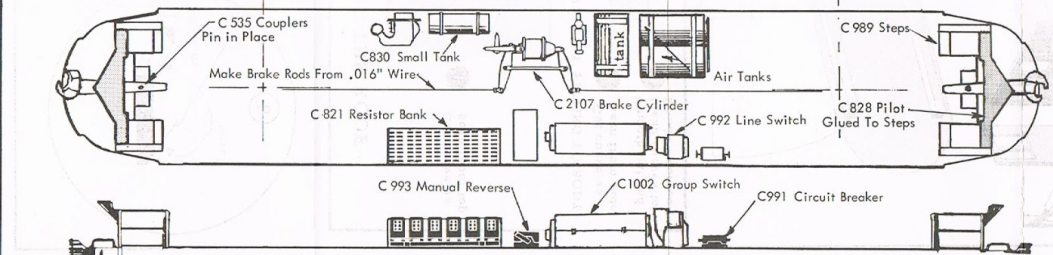
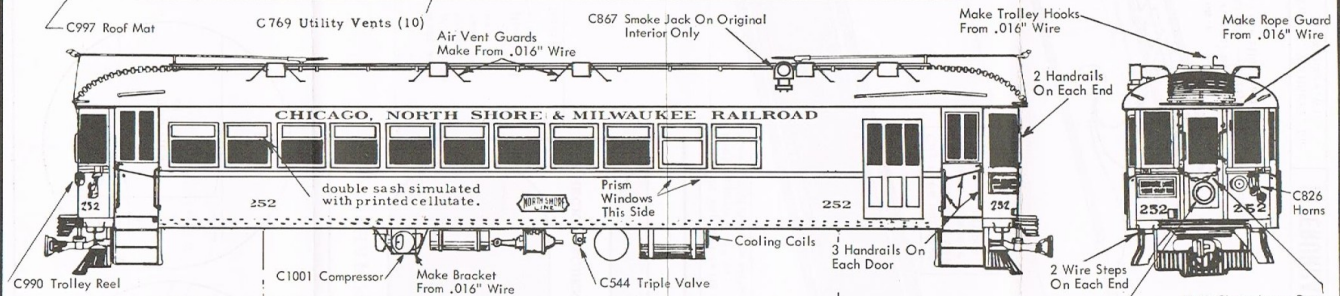
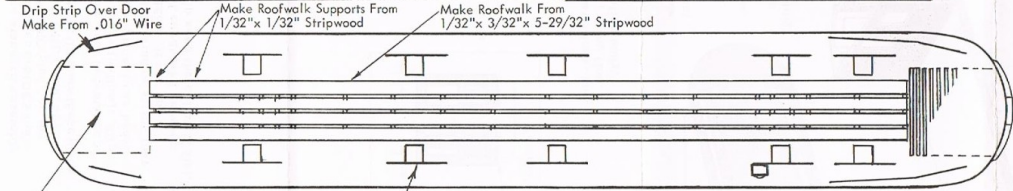
**WALTHERS** 5531  
4050 N. 34 ST. MILWAUKEE, WIS. 53216

**NORTH SHORE**  
shoreline combine  
Series 250-256

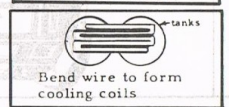
FULL SIZE HO  
PLAN SHEET 65-0302A



**PAINT COLORS**  
Floquil Maroon, Grimy Black, Reefer Orange, Reefer Gray, Caboose Red, and a special green made by mixing half Dark Green and half Coach Green are a very good match for the original CNS&M paints.



Portable headlights were removed by motorman when not required. We suggest you install headlight on power cars only. Dimple on inside of end-door shows location.



**IMPORTANT** This outline covers standard assembly procedure for all combines. Differences in SIDES and details are shown in the actual sized HO plans on the reverse. These are for YOUR CAR ONLY, and any needed dimensions may be taken directly from these plans.

**PAINTING** is best done before the roof is fastened in place. Hand rails may be painted brass (yellow). Slip a piece of paper under the hand rail to protect car body. After car sides are painted, cellulose window strips may be cemented to the inside of the sides. If car has recessed window frames, strips of cardboard between the cellulose and the sides will help keep the cellulose flat.

**DON'T LOUSE IT UP!**

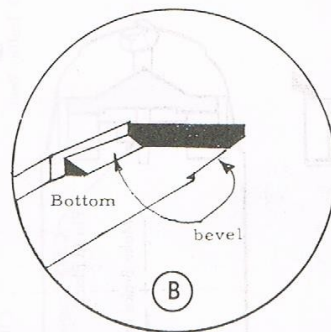
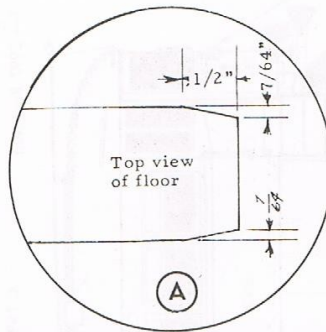
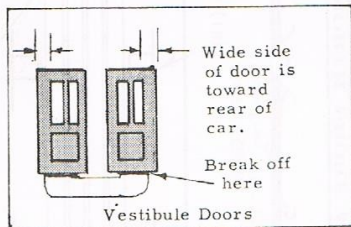
Follow these suggestions.

1. Read the instructions
2. Use a good cement -- one made to do the job.

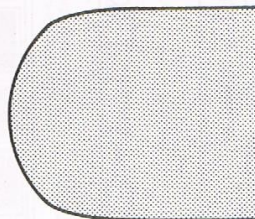
- A** Check overall floor length (6-3/4"). Taper floor (both ends) as shown in diagram A.
- B** Bevel underside of floor so wood will not show beneath door castings. (See diagram B)
- C** If motor unit is to be installed, cut opening in floor
- D** Assemble ends, vestibule partitions, and vestibule doors to the floor, using Goo. This provides rigidity to entire body.
- E** Cement cellulose sash strips and Baggage doors to car sides. Notch floor to provide clearance for doors. Cement sides to car body.
- F** Turn over and complete underbody as shown on plans.
- G** Shape roof contour as shown in plans, using a small sanding block. (This will be simplified if the end is rounded as shown in the top view, then curved as shown in the side view, and then smoothed out.

The special window strips have both gray and orange stripes. Select one that matches your car color and position with printed side out, butted against top of car side.

Be sure to use a good model cement. If you aren't sure how your cement will work on wood and metal, PLEASE use Walthers Goo. We know Goo will do a fine job on these materials and the quick-setting contact action (follow directions on the tube) will be a big help to you. Don't take a chance with a fine model by using an inferior cement.



**SHAPING THE ROOF**



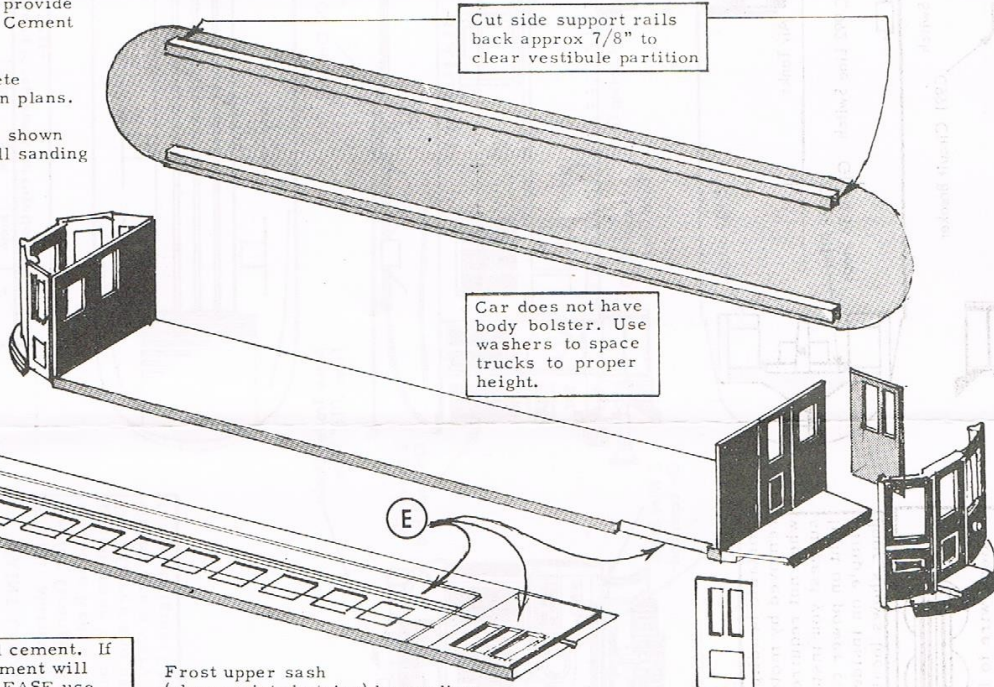
Cut curve as seen from top

CHECK FREQUENTLY BY FITTING TO BODY



Cut curve as seen from side

3 Smooth out and blend curves to finished contour.



Frost upper sash (above printed stripe) by sanding lightly. (Sand inside -- stripe is on outside.) See plans (over) for illustration.