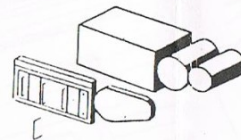


Round roof
as shown

Illustrated is one of our super detailing accessories -- an air conditioning unit. This may be used in place of, or in addition to, one of the regular underbody boxes.

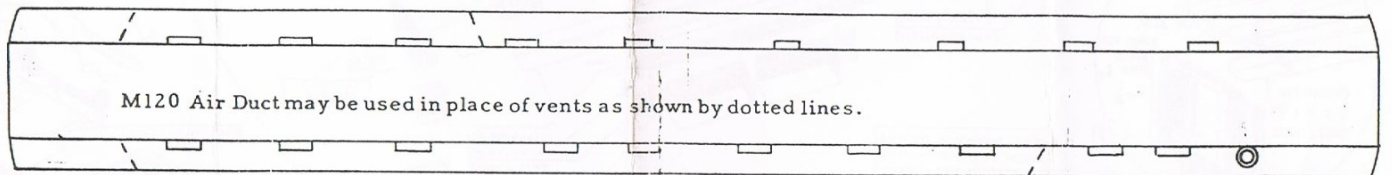


9101

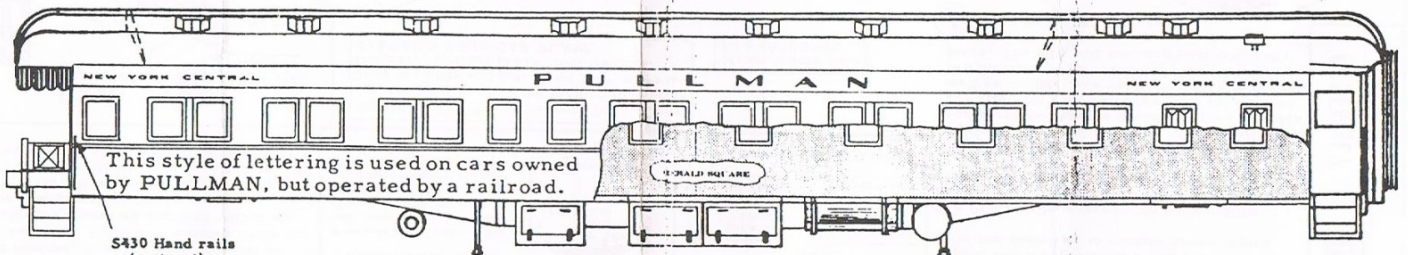
80' OBSERVATION

ALL NATION LINE
23 W 546 ST. CHARLES RD.
WHEATON, IL 60188
Scale - 1/8" = one foot

59-0520



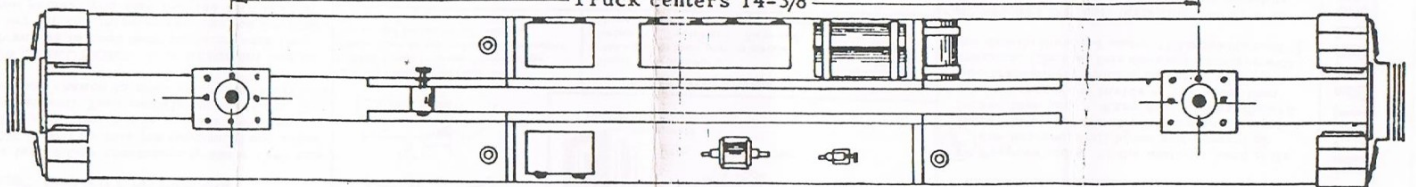
M120 Air Duct may be used in place of vents as shown by dotted lines.



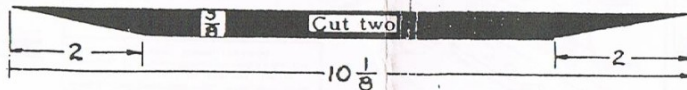
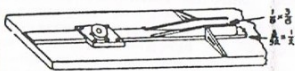
This style of lettering is used on cars owned by PULLMAN, but operated by a railroad.

5430 Hand rails
(optional)

Truck centers 14-3/8"



Underframe Assembly Detail



IMPORTANT -- TRUCKS & COUPLERS
Truck centers shown are average. Verify position with the trucks you intend to use before cutting center rail. (Allow for steps).
Mount couplers on a pad of 3/2" center-rail stock. Proper coupler height (center) is 11/16" above the rail or 1/4" below floor.

HEY, HERE'S SOMETHING NEW!

One of the really new features of this kit is the method of cementing the sides to the body. BUT, you need a cement that will hold wood to metal: one that will NOT come loose in a damp basement, a cement that will NOT crack even if the model is stored in an attic where the temperature may change rapidly from sub-zero to plus 120°. GOO WILL DO THIS JOB.

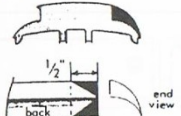


We have tested Goo continuously since 1949 and we KNOW it will do this job (and most any other cementing job). Don't take a chance with an ordinary cement. Your models deserve Goo. Try it. Give Goo a chance to show you some new tricks.

FOLLOW DIRECTIONS. It is important and to your advantage to coat both surfaces with Goo and let dry for 2-3 minutes as it says on the tube. Or, if you prefer, you may use the TRANSFER METHOD. Coat one part with Goo, press into place and remove. Goo has now "transferred" to the other surface. WAIT 2-3 minutes while the excess solvent evaporates and tack builds up, then press into place for final assembly. You'll be amazed at the difference this simple procedure makes in the speed with which your joints set and the ease with which your models Goo together.

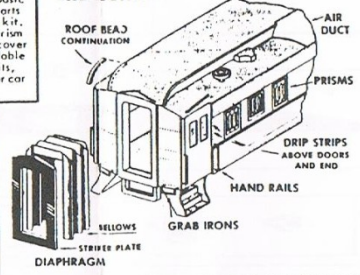
SUPER DETAILS To keep basic kit cost low, we packed super detail parts (marked * or "optional") in a separate kit. Included are: hand rails, grab irons, pin windows, guard chain, tailgates, box cover detail, roof bead castings. Also available are accessories such as interiors, lights, markers, air conditioners to make your car a real show piece. Consult catalog.

AIR DUCT Used on roof of air conditioned car in place of individual vents.



Cut off shaded area (both ends) CAREFUL not to break feather edge. Shape front or top surface, sand smooth. Fit to roof (remove roof beading). See end illustration for finished view.

END DETAIL

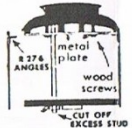


ROOF ROUNDING

Shape lower monitor (L) Make curved head from stripwood (or use *C979 cast bead). Fit to roof. Shape upper monitor (U) to match bead.

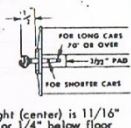
REMOVABLE ROOF

A removable roof is desirable when interiors or lighting are planned. *U750 removable roof kit makes this easy, provides electrical connection to trucks. *R276 metal angles (cemented or soldered) will reinforce sides.

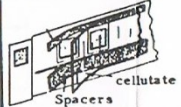


COUPLERS

Mount couplers on 1/32" rod with #2 x 3/8 screw. For short radius curves, increase 1/2" dimension. Proper height (center) is 11/16" above rail or 1/4" below floor.



E Complete the underbody details with both standard and optional parts, scaling any needed dimensions from the plan.



Smooth window "glass" is obtained by compensating for embossed frames with cardboard spacers.

NOTE: Spacers and cellulose must be above floor and below roof (or angles). Trim if necessary.

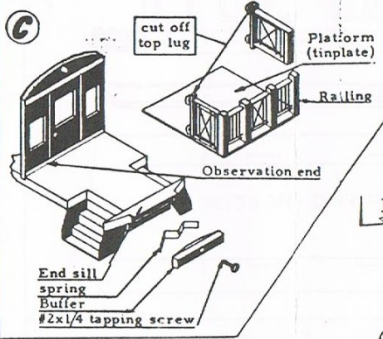
F Prepare sides. If the optional hand rails are desired, drill holes and cement or solder in place. Check sides against body for fit and then paint. When dry, Goo cardboard window spacers to inside of car side, then Goo transparent window material to the spacers. (Be sure this does not interfere with the details installed under "Removable roof.")

G Prepare the roof, installing details with Goo as shown on the plans, and rounding upper and lower monitors with razor blade, file and sandpaper to contour shown in plan.

H Paint the body, except do not paint the edges of the floor and roof where the sides will be cemented in place.

I Fasten sides to body with Goo as follows: Coat the edge of the floor and roof with Goo and press the sides in place. Remove the sides and allow the Goo, which is now on the sides as well as the floor and roof, (or angles) to dry for two minutes. Then press the sides firmly in place. The joint will set very quickly this way.

J Mount trucks and couplers.



IMPORTANT: These General Instructions are designed to show the method of assembling the body and details on ANY observation car. CHECK LOCATION OF ALL PARTS ON YOUR CAR PLANS.

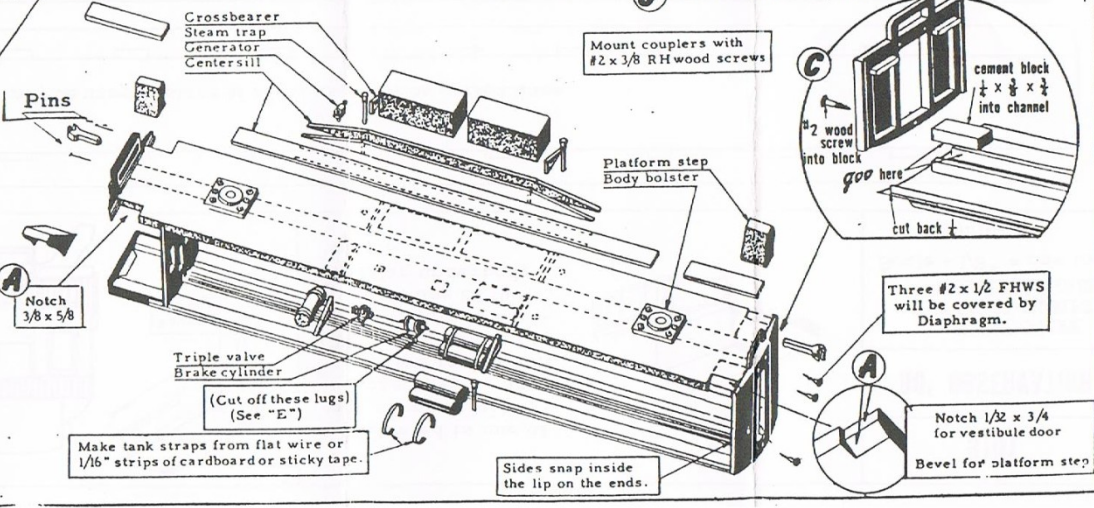
Mount trucks with #4 x 1/2" RHWS.

A Notch floor to provide clearance for vestibule doors and platform steps. If the interior is to be detailed, now is the time.

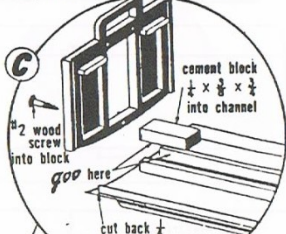
B Clean flash from all castings. Fasten optional super detail parts to ends if desired. (See note on "super details.")

C Fasten vestibule end to floor and roof. Observe end sill to floor, and railing to platform. Cement platform to floor.

D Locate truck centers and Goo diecast body bolsters in place. Cut centersill parts from stripwood and assemble on floor, reinforcing the fishbelly sections with pins. Be sure the centersill is centered on the floor.



Mount couplers with #2 x 3/8 RH wood screws



Three #2 x 1/2" FHWS will be covered by Diaphragm.

Notch 1/2 x 3/4 for vestibule door. Bevel for platform step.

Make tank straps from flat wire or 1/16" strips of cardboard or sticky tape.

Sides snap inside the lip on the ends.

(Cut off these lugs) (See "E")