

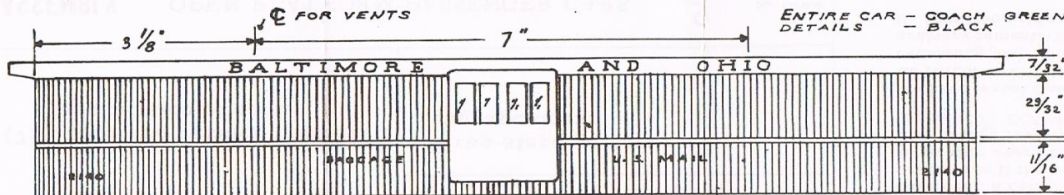
4561 - 4562 - 4563

O gauge

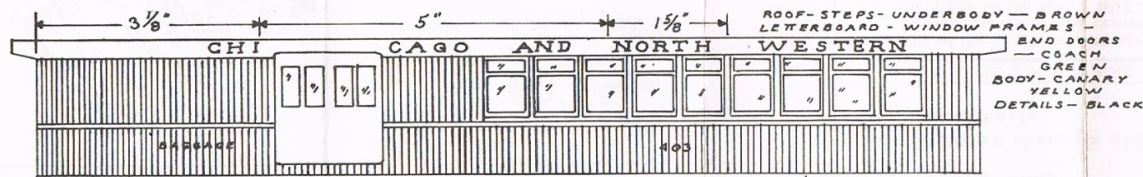
OPEN PLATFORM
PASSENGER CARS

Wm K WALTHERS Inc
Milwaukee, Wisconsin

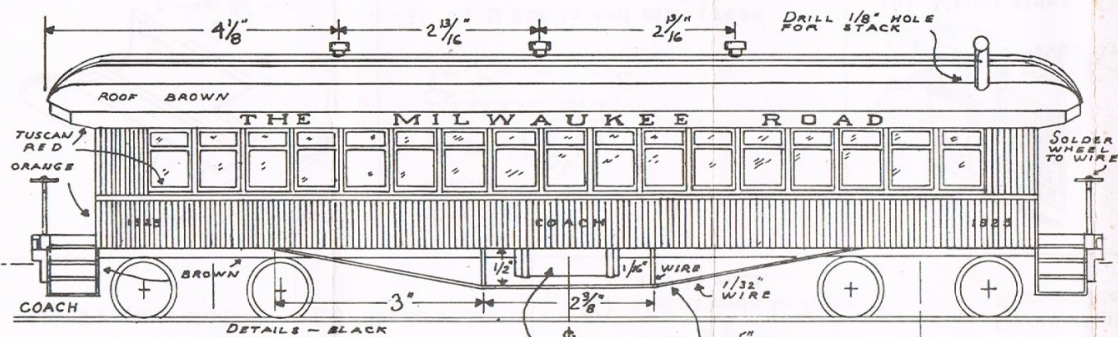
66.1003



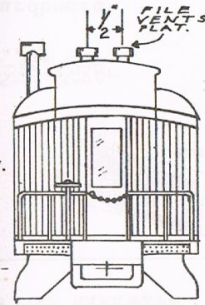
4561 Baggage Car



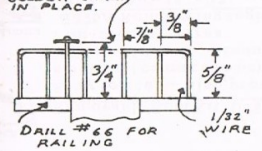
4562 Combine

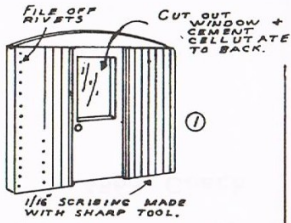


4563 Coach

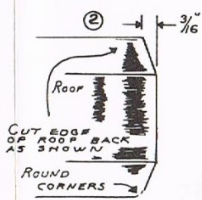


CUT OUT AFTER RAILING IS SOLDERED IN PLACE. SOLDER CHAIN IN PLACE.

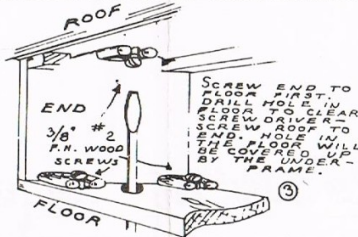




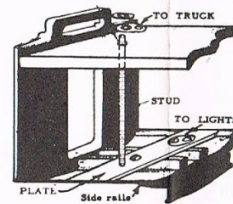
(1) Prepare Ends



(2) Shape roof

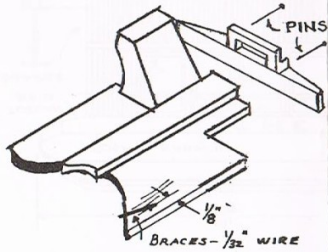


(3) Mount ends to floor and to roof.

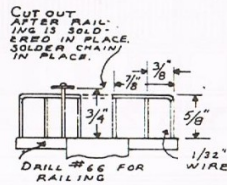


Or use Optional (not in kit) Removable roof hardware

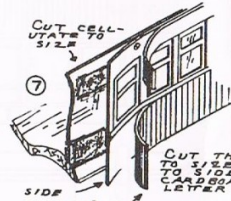
Removable Roof Kit U750
 Easy to use -- also provides electrical connection between lights and truck, eliminating roof-to-floor wires.
R276A Reinforcing angles
 (3/16 x 3/16 x 19-3/4") pr.



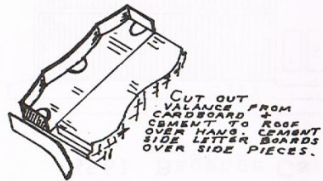
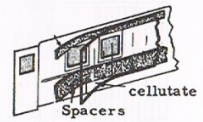
(4) Cement Centersill, steps and end sill to floor.



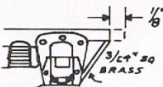
(5) Drill #66 in end sill, press railing into place. Solder at bottom by touching iron to wire.



(6) Mount sides. Cardboard spacers go between cellululate and side. Overlay simulates board lines.



(7) Cardboard valance cements to underside of roof.



Old time trucks can be made from Pullman standard as shown

Strap steps go under baggage door.

Drill holes through sides for hand rails.

HEY, HERE'S SOMETHING NEW!

One of the really new features of this kit is the method of cementing the sides to the body. BUT, you need a cement that will hold wood to metal: one that will NOT come loose in a damp basement, a cement that will NOT crack even if the model is stored in an attic where the temperature may change rapidly from sub-zero to plus 120°. **GOO WILL DO THIS JOB.**



We have tested Goo continuously since 1949 and we KNOW it will do this job (and many other cementing jobs). Don't take a chance with an ordinary cement. Your models deserve Goo. Try it. Give Goo a chance to show you some new tricks.