

3305 S PULLMAN

"O" GAUGE

WM. K. WALTHERS INC.

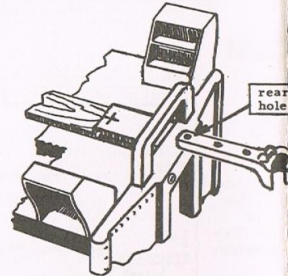
1945 N. WATER STREET
MILWAUKEE 2, WISCONSIN

PLAN VIEWS FOR
O GAUGE MODEL
SCALE: 3/8" = 1"

60-1118



SHORT RADIUS OPERATION



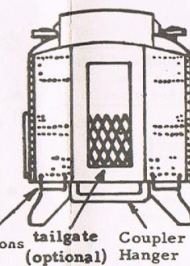
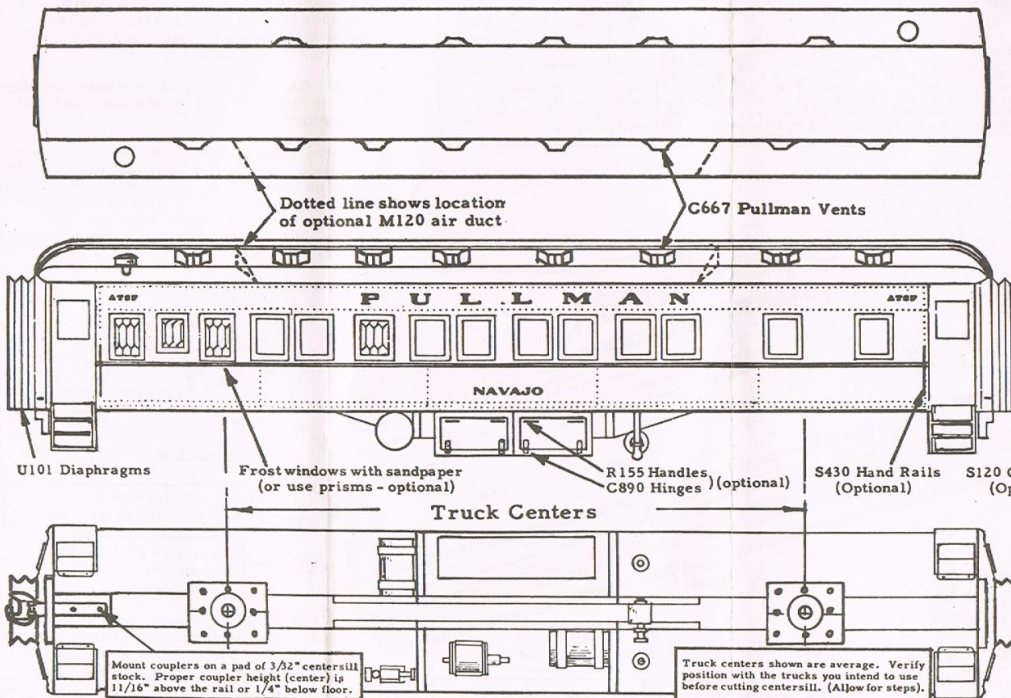
When couplers are mounted as shown in the plans -- with the mounting screw in the rear hole, 11/16" back from the end of the floor, these cars can be made to operate on a 20" radius.

To operate on sharper curves, let the couplers hang out farther by mounting them (in the rear hole) less than 11/16" back from the end of the floor. If diaphragms interfere with swing of cars, it may be necessary to leave them off.

For operation with Lionel cars and locomotives, we recommend our 3300 'T' series which includes the M393 low-silhouette roof and C796 Tinplate couplers that mate with Lionel couplers.

FULL SIZED TEMPLATE FOR ROOF

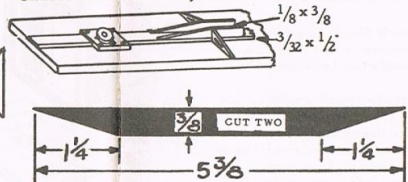
Trace or cut out (after reading other side) and use to check rounding of roof deck.



Illustrated is one of our super detailing accessories -- an air conditioning unit. This may be used in place of one of the regular underbody boxes.



Underframe Assembly Detail



HEY, HERE'S SOMETHING NEW!

One of the really new features of this kit is the method of cementing the sides to the body. BUT, you need a cement that will hold wood to metal: one that will NOT come loose in a damp basement, a cement that will NOT crack even if the model is stored in an attic where the temperature may change rapidly from sub-zero to plus 120°. **GOO WILL DO THIS JOB.**



We have tested Goo continuously since 1949 and we KNOW it will do this job (and many other cementing jobs). Don't take a chance with an ordinary cement. Your models deserve Goo. Try it. Give Goo a chance to show you some new tricks.

FOLLOW DIRECTIONS. It is important and to your advantage to coat both surfaces with Goo and let dry for 2-3 minutes as it says on the tube. Or, if you prefer, you may use the **TRANSFER METHOD.** Coat one part with Goo, press into place and remove. Goo has now "transferred" to the other surface. **WAIT** 2-3 minutes while the excess solvent evaporates and tack builds up, then press into place for final assembly. You'll be amazed at the difference this simple procedure makes in the speed with which your joints set and the ease with which your models Goo together.

Sides, floor, and roof are all cut to exact size. You do not have to trim them. Roof is 1/2" longer than sides and floor.

Fasten ends to roof and floor with #2 x 1/2" Flat Head Wood Screws. (See inset "B")

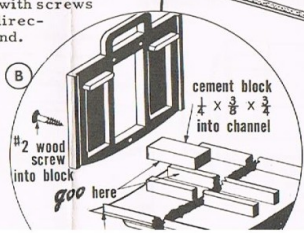
ASSEMBLY OUTLINE

A Clean flash from end castings. Fasten optional super detail parts to ends if desired. (See note on "Super Details".)

B Fasten ends to floor and roof with screws and Goo (inset "B"). Follow directions on Goo tube for quickest bond.

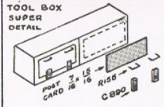
C Notch floor to provide clearance for vestibule door and step (see inset "C").

D Locate truck centers for the trucks you will use and Goo the diecast body bolsters in place. Cut centersill parts from wood and assemble on floor, reinforcing the fishbelly



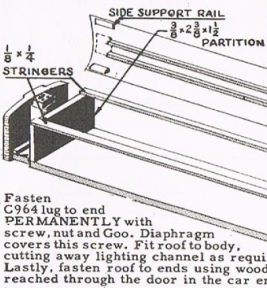
SUPER DETAILS

In order to keep the price of the basic kit as low as possible, we have packed the super detailing parts (usually referred to as "optional" on the plans) in a separate kit. These kits, which include hand rails, grab irons, prism windows, guard chain for the trucks, hinges and handles for underbody boxes are available for all styles of cars. You may also purchase accessories such as air conditioning strips, marker lights, venetian blind decals, interior detailing, and lighting kits that will make your car a real show-piece. Consult catalog for listings.

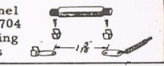
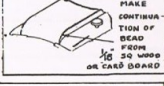
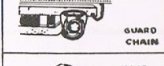
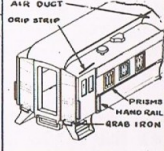
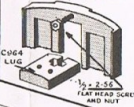


REMOVABLE ROOF

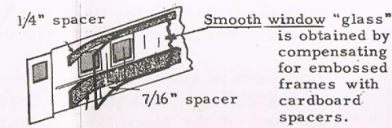
A removable roof is desirable if interior detailing or lighting is planned. To provide for it, cut away the regular side support rails and make a new support frame as shown. Sides will be Gooed to this new frame.



Fasten lug to end first. Run screw through end, start nut, then slip lug over nut & tighten.



E Complete the underbody details with both standard and optional superdetail parts, scaling any needed dimensions from the plan.



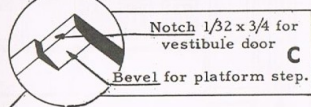
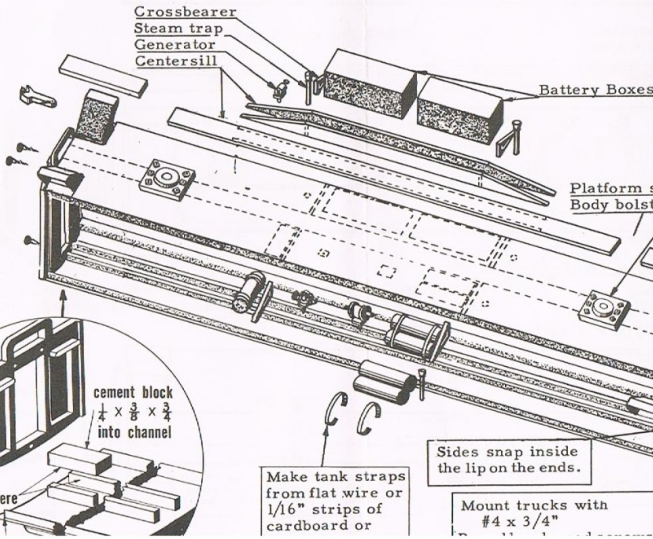
F Prepare sides. If the optional hand rails are desired, drill holes and cement or solder in place. Check sides against body for fit and then paint. Do not paint the edges that will be Gooed to the roof and floor. When dry, Goo cardboard window spacers to inside of car side, then Goo transparent window material to the spacers. (Spacers not required on cars with streamlined-style flat windows.)

G Prepare roof, installing details with Goo as shown on the plans and rounding the ends with file and sandpaper to contour shown in the drawings.

H Paint the body, except do not paint the edges of the floor and roof where the sides will be cemented in place.

I Fasten sides to body with Goo as follows: Coat the edge of the floor and roof with Goo and press the sides in place. Remove the sides and allow the Goo, which is now on the sides as well as the floor and roof, to dry for two minutes. Then press the sides firmly in place. The joint will set very quickly this way.

J Mount trucks and couplers.



Make tank straps from flat wire or 1/16" strips of cardboard or

Sides snap inside the lip on the ends.

Mount trucks with #4 x 3/4"