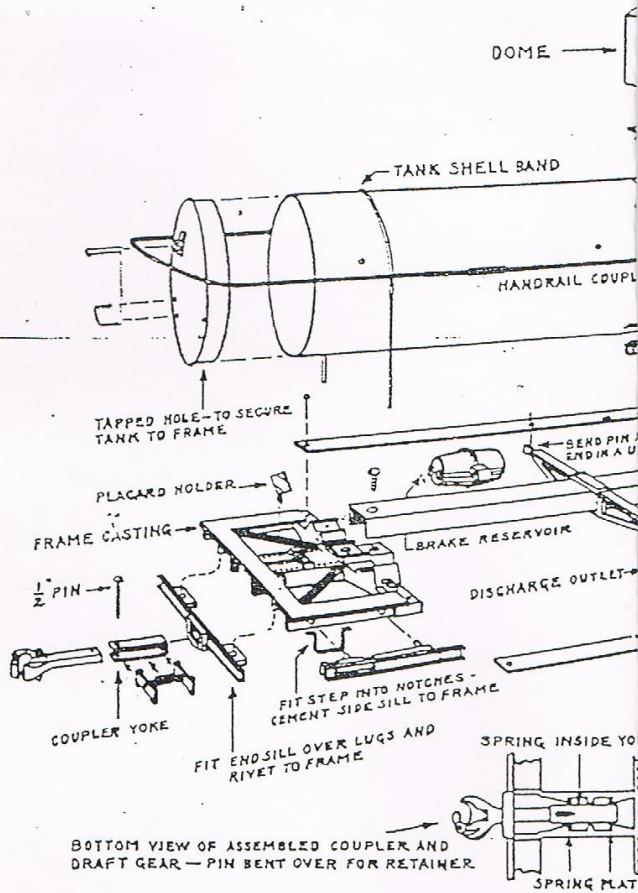
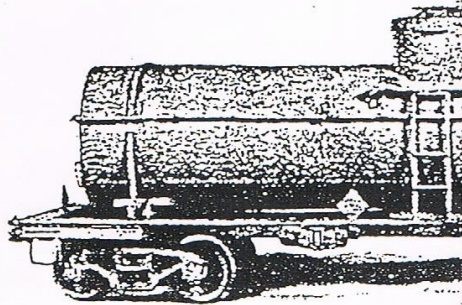


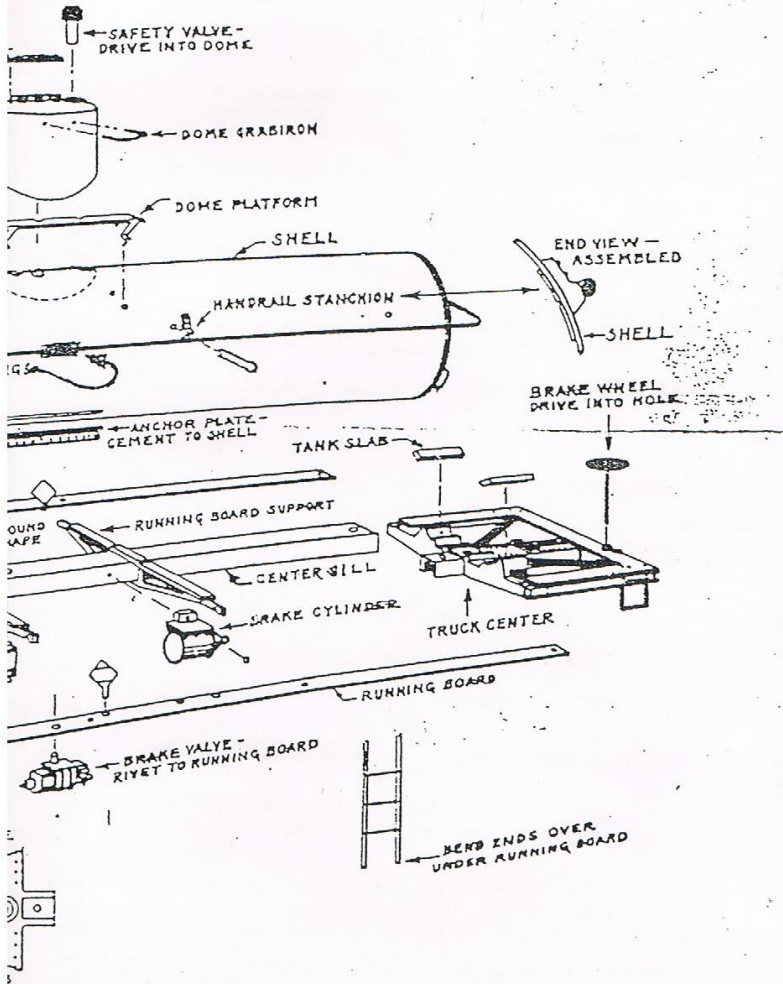
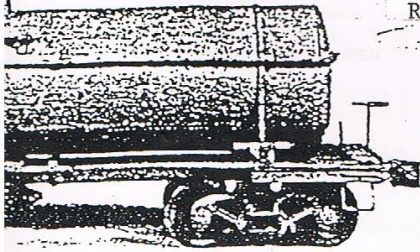
-----  
construction.

- 1 - STUDY THE DRAWING CAREFULLY IN ORDER TO IDENTIFY THE VARIOUS PARTS. CAR SHOULD BE ASSEMBLED WITH ALL PARTS IN THE SAME RELATIONSHIP AS SHOWN. BRASS PARTS MAY BE EITHER SOLDERED OR ATTACHED WITH ONE OF THE SUPER INSTANT GLUES. CAST PARTS CANNOT BE SOLDERED, BUT SHOULD BE AFFIXED WITH INSTANT GLUE.
- 2- CLEAN ALL FLASH FROM CASTINGS. THIS IS IMPORTANT, YOUR SKILL AND PATIENCE WILL BE REWARDED IN THE FINISHED MODEL.
- 3- USING THE PIECE OF 1/32" WIRE, FORM THE GRAB IRONS FOR TANK END AND DOME. INSTALL AS SHOWN ON DRAWING, BEND ENDS OVER ON INSIDE.
- 4- SECURE DOME PLATFORMS TO TANK AS SHOWN. BEND TABS OVER INSIDE.
- 5- FASTEN DOME TO TANK EITHER BY SOLDER OR INSTANT GLUE. USE CENTER HOLE IN WRAPPER FOR GUIDE.
- 6- PLACE TANK ENDS IN SHELL WITH HOLE SHOWING THROUGH OPENING IN BOTTOM OF TANK. ~~CUT WITH~~ INSTANT GLUE.
- 7- INSTALL HANDRAIL USING THE 8 HANDRAIL STANCHIONS AND 10 BRASS STRIPS SUPPLIED. BEND STRIPS INTO U SHAPE AND BEND ENDS OVER INSIDE TANK, PRESS ENDS DOWN FIRMLY.
- 8- JOIN ENDS OF HANDRAIL USING COUPLING SHOWN ON DRAWING.
- 9- INSTALL END SILLS AS SHOWN ON DRAWING. LUGS MAY BE RIVETED OVER BY PLACING FRAME UPSIDE DOWN ON PIECE OF HARDWOOD OR BLOCK OF STEEL. AVOID FLATTENING RIVET DETAIL OR BRAKE WHEEL RATCHET DURING THIS OPERATION.
- 10- SECURE 4 SILL STEPS AND SIDE SILLS TO FRAME CASTING; USE INSTANT GLUE FOR SECURING THE SILLS. PLACE A DROP OF GLUE ON ENDS OF LUGS EXTENDING THROUGH HOLES.
- 11- ATTACH BRAKE WHEEL AND PLACARD HOLDERS TO ENDS OF FRAME, AND GLUE IN PLACE.
- 12- RIVET DISCHARGE OUTLET TO CENTER SILL. FASTEN BRAKE CYLINDER TO CENTER SILL WITH INSTANT GLUE. SLIDE RUNNING BOARD SUPPORT CASTINGS OVER ENDS OF CENTER SILL.
- 13- INSTALL BRAKE RESERVOIR TO CENTER SILL WITH INSTANT GLUE.
- 14- FASTEN CENTER SILL TO FRAME END CASTINGS; USING TWO 2-56 x 1/4" SCREWS.
- 15- INSTALL BRAKE VALVE TO RUNNING BOARD WITH INSTANT GLUE.
- 16- MOUNT RUNNING BOARDS ON FRAME CASTING WITH INSTANT GLUE.
- 17- INSTALL PLACARD HOLDERS TO RUNNING BOARDS.
- 18- GLUE TANK SLABS INTO POSITION ON FRAME AS SHOWN ON DRAWING.
- 19- MOUNT TANK SHELL ON FRAME USING TWO 2-56 x 1/4" FLAT HEAD SCREWS. USE COUNTERSUNK HOLES IN FRAME ENDS.
- 20- PLACE TANK SHELL BANDS IN POSITION; THREAD ENDS THROUGH HOLES IN FRAME BENDING ENDS OVER ON UNDERSIDE OF FRAME. THESE BANDS SHOULD BE DRIVEN SECURELY AROUND TANK. YOU MAY WANT TO SECURE SHELL TO ENDS WITH INSTANT GLUE.
- 21- CUT LADDERS TO LENGTH, IF NECESSARY, TO MEASUREMENT BETWEEN HANDRAIL AND RUNNING BOARD. GLUE OR SOLDER. SLEEVES TO CONNECT HANDRAILS SHOULD BE IN THE CENTER OF LADDER WHEN MOUNTED TO HANDRAIL.
- 22- GLUE ANCHOR PLATES TO TANK SHELL.
- 23- INSTALL COUPLERS AND DRAFT GEAR AS SHOWN IN TWO VIEWS ON DRAWING. MAKE SURE THE NARROW SLOT IN FRAME CASTING IS FREE OF ALL BURRS. BY ASSEMBLING SPRING PLATES TO ENDS OF SPRING AND THEN SLIDING THIS UNIT INTO COUPLER YOKE, DRAFT GEAR MAY BE INSTALLED WITH LITTLE DIFFICULTY. PLACE COUPLER IN POSITION, MAKING SURE IT IS RIGHT SIDE UP. FASTEN IN PLACE WITH BRASS PIN, BENDING END OVER UNDER SIDE OF CAR; ALLOW JUST ENOUGH FREEDOM TO PERMIT COUPLER TO SLIDE FREELY.
- 4- CAR IS NOW READY FOR PAINTING. CLEAN WITH SMALL QUANTITY OF CARBON TETRACHLORIDE OR SOME SIMILAR CLEANING FLUID.



Part No.	Quantity each car	Name	Part No.	Quantity each car	Name
TC-1	1	Dome	TC-14	1	Frame Center
TC-2	1	Dome lid	TC-15	2	Coupler
TC-3	2	Safety Valve	TC-16	2	Tank Shell
TC-4	2	Tank End	TC-17	2	Tank Anchor
TC-5	1	Tank Shell	TC-18	2	Running Board
TC-6	2	Tank Hand Rail	TC-19	2	Running Board
TC-7	1	Tank Hand Rail Coupling	TC-20	4	Tank Slab
TC-8	8	Tank Hand Rail Stanchion Casting	TC-21	4	Sill Step
TC-9	10	Hand Rail Stanchion Strips	TC-22	4	Side Sill
TC-10	4	Placard Holder	TC-23	2	Frame End
TC-11	2	Coupler Yoke	TC-24	2	End Sill
TC-12	2	Coupler Spring	TC-25	2	Ladders
TC-13	4	Coupler Spring Plate	TC-26	1	Discharge

RIVETED CONSTRUCTION



	Part No.	Quantity each car	Name
Sill	TC-27	1	Brake Wheel on Staff
	TC-28	1	Brake Valve
and	TC-29	1	Brake Reservoir
Plate	TC-30	1	Brake Cylinder
d	TC-31	2	Dome Platform
d Support	1 pc. 8"		1/32 Brass Wire (6 Grabirons)
sting		2	1/2 x #19 Ex. Pins (couplers)
plet		2	2-56x1/4 Flat Head Screws (Tank)
		2	2-56x1/4 Filister Head Screws (center sill)